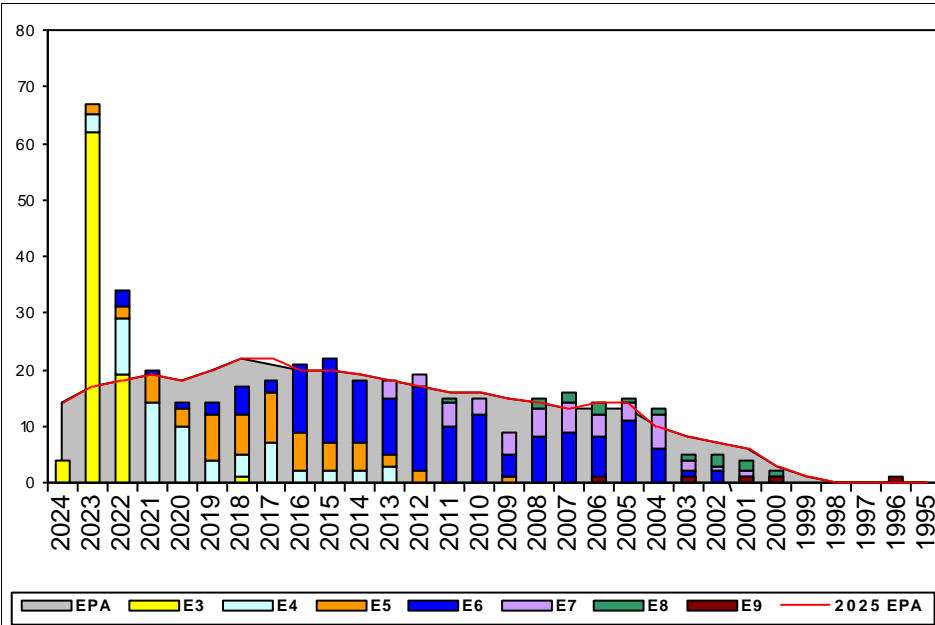


Boatswain's Mate, TAR - K000

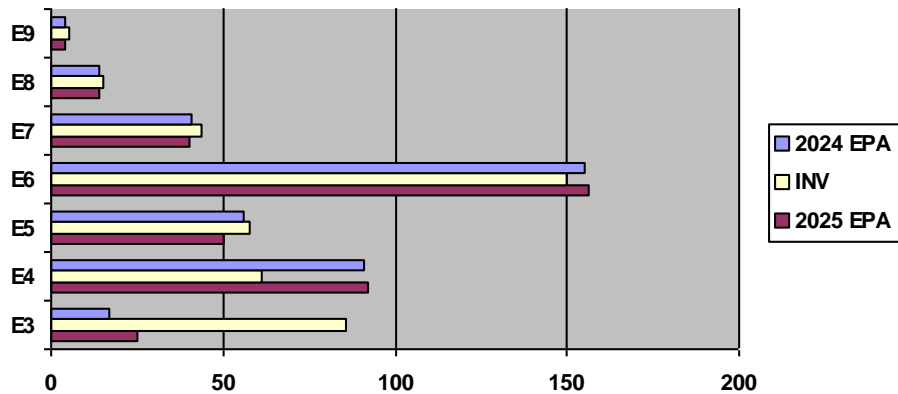


Sea Shore Rotation			FS MANNING			ADV OPP.	
TOUR	SEA	SHORE	PG	SEA	SHORE	BMTAR	All-Navy
E1-3	48	42	E1-3	672.73%	0.00%	TIR	TIR
E4	48	42	E4	54.12%	550.00%	56.25%	58.8%
E5	48	42	E5	134.48%	63.64%	19.05%	47.0%
E6	48	42	E6	69.92%	196.30%	23.91%	15.0%
E7	48	36	E7	96.00%	118.75%	28.13%	24.3%
E8	48	36	E8	81.82%	300.00%	11.54%	5.3%
E9	42	36	E9	75.00%	0.00%	0.00%	20.0%

Zone Information

	ZONE A	ZONE B	ZONE C	ZONE D	ZONE E	ALL ZONES
FY24 Manning	147%	102%	99%	100%	71%	111%
FYTD RE Rate:	60.00%	100.00%	80.00%	100.00%	20.00%	72.00%
FY25 Manning	147%	101%	99%	98%	71%	110%

EPA by Paygrade vs Inventory



NOTES

Rating Manning at 110% of FY-24
 ** NO CONVERT IN OPPORTUNITIES **
 ** CONVERT OUT OPPORTUNITIES: E5 YG 2015-2016 **
 ** NO RC2TAR QUOTAS **
 *HYT gates have effectively been suspended for sailors willing to commit to follow on orders. Once a sailor is selected for a billet, Detailer and ECM will coordinate movement of EDLN/HYT.

BM TAR ECM
 YNC(AW/EXW) Keith Henley
 keith.m.henley.mil@us.navy.mil

	E1-3	E4	E5	E6	E7	E8	E9	TOTAL
% INV to FY24 EPA	506%	67%	104%	97%	107%	107%	125%	111%
EPA (FY24)	17	91	56	155	41	14	4	378
INVENTORY	86	61	58	150	44	15	5	419
EPA (FY25)	25	92	50	156	40	14	4	381
% INV to FY25 EPA	344%	66%	116%	96%	110%	107%	125%	110%

