



2025 Supply Corps Spouses Roadshow

Presented by:

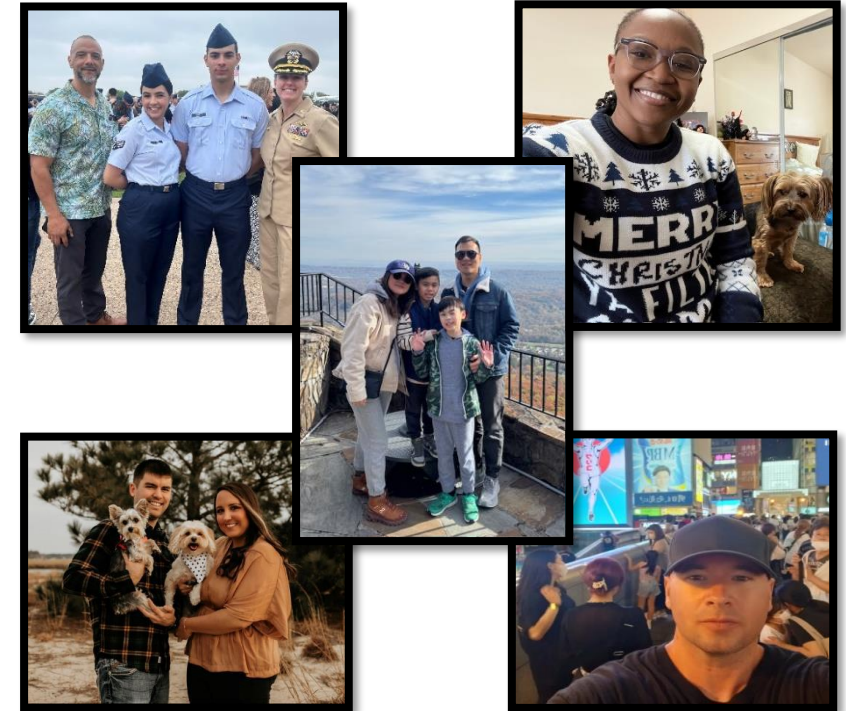
CAPT Dena Risley – Director, Supply Corps Personnel

CAPT(sel) Krysten Ellis – Director, Supply Corps Detailing



Learning Objectives

1. Understand Supply Corps Community Values and how they should guide career choices.
2. Understand Career Opportunities from Ensign to Captain to maximize promotability, career satisfaction, and success.
3. Review Family Resources.





Community Values

Valued achievements at ALL paygrades

- Sustained superior performance in leadership billets of increasing responsibility and complexity is most valued
- History of assignments which reflect diversity in scope, complexity, and mission commensurate with their rank

Valued achievements prior to LIEUTENANT COMMANDER

- Two operational tours with one in an afloat unit
 - SC lateral transfers who are assigned to or complete at least one SC operational tour will be considered fully qualified
- Attainment of at least one SC officer warfare qualification
- Department Head tour (especially valued)

Valued achievements prior to COMMANDER

- Completion of two or more SC operational tours, regardless of accessions source
- Exposure to a range of operational and support tours across Fleet logistics, supply chain, acquisition management, and life cycle sustainment
- Proven potential to manage complex processes while effectively integrating logistics and sustainment functions
- Business-related, data science, or military service college Master degree (regardless of source)

Valued achievements prior to CAPTAIN

- Proven ability to lead people (military and civilian) and organizations in tough, high-impact environments while leveraging diverse experiences
- Experience in a broad range of operational and support tours across Fleet logistics, supply chains, acquisition management at multiple echelons across the SC Lines of Operation
- Demonstrated leadership and performance in O-5 milestone tours (especially valued)

O4 and Below Detailing



LT Shore and Operational Desks

- Detailing window 8 months from PRD CONUS
10 months from PRD OCONUS
- Operational Tours are 100% mandatory fill



LCDR Desk

- Detailing window 12 months from PRD
- Operational Tours are 100% mandatory fill

DUTY TYPE	PRD	UIC	BSC	BIN	RANK	DESIG	COMMAND	TITLE	AQD	SUBSPEC	LOCATION
CONUS SEA DUTY	202410	55132	17020	4152886	LCDR	3100	NCHB 1	GEN SUP/COMPANY CDR			WILLBG
CONUS SEA DUTY	202506	20993	31310	0054737	LCDR	3100	CVN 70 VINSON	GEN SUP			SDGO
CONUS SEA DUTY	202507	21700	11060	0059255	LCDR	3100	LHD 3 KEARSARGE	GEN SUP			NORVA
CONUS SEA DUTY	202507	27502	10950	4026320	LCDR	3100	LHA 8 BOUGAIN	GEN SUP			NORVA
CONUS SEA DUTY	202507	21853	31300	1333480	LCDR	3100	CVN 75 H TRUMAN	GEN SUP			NORVA
CONUS SEA DUTY	202509	21247	31320	0056399	LCDR	3100	CVN 71 T ROOSEVE	GEN SUP			SDGO

DUTY TYPE	PRD	UIC	BSC	BIN	RANK	DESIG	COMMAND	TITLE	AQD	SUBSPEC	LOCATION
CONUS SHORE DUTY	202001	81464	00800	1658277	LCDR	3100	COMNAVELSG	GEN SUP			WILLBG
CONUS SHORE DUTY	202406	47728	00800	0076902	LCDR	3100	DSCA	ADV C&S INST - SECURITY ASSIST INSTRUCTOR			ARLING
OCONUS SHORE DUTY	202406	67581	01620	3530479	LCDR	3100	NCSA HQ MONS	SO (ASSET MANAGEMENT)			CASTEA
OCONUS SHORE DUTY	202407	4688A	04170	4062061	LCDR	3100	LOG SPT NTHRLND	SO (LOG PLANNER MARITIME/AIR)			BRUNSM
CONUS SHORE DUTY	202501	47272	01000	0096378	LCDR	3100	MSDDC 841ST BN	TRANS DIR/DEPUTY CDR	JD1		CHARLE
HAWAII (SHORE DUTY)	202508	39934	11210	2700424	LCDR	3100	DSCA APC	CHIEF, PROCUREMENT & SUPPLY/03064953			HONOL

Enter Detailing Window
(8-12 months out)

Submit Preferences

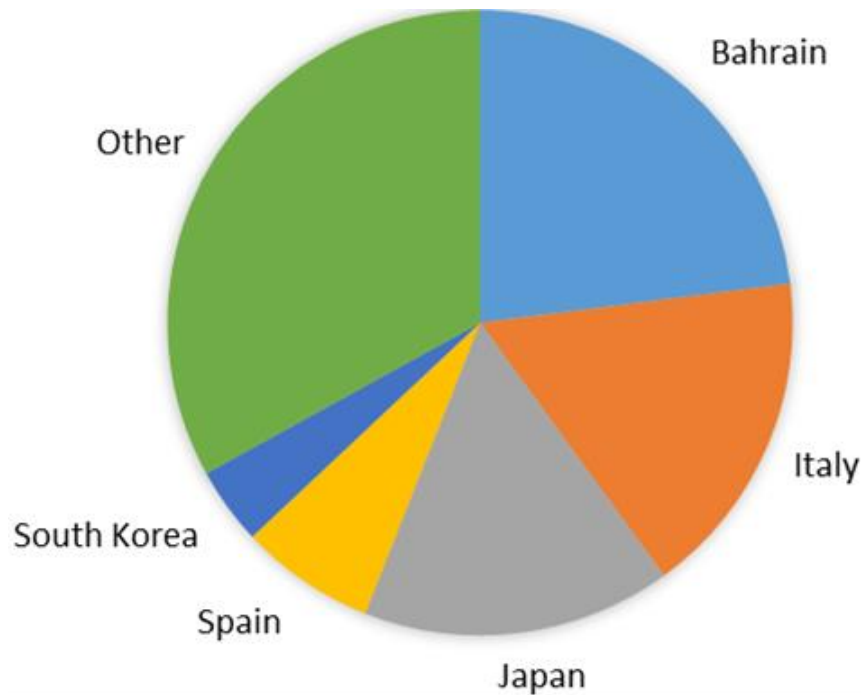
Screen (if necessary)

Penciled in,
Orders drafted

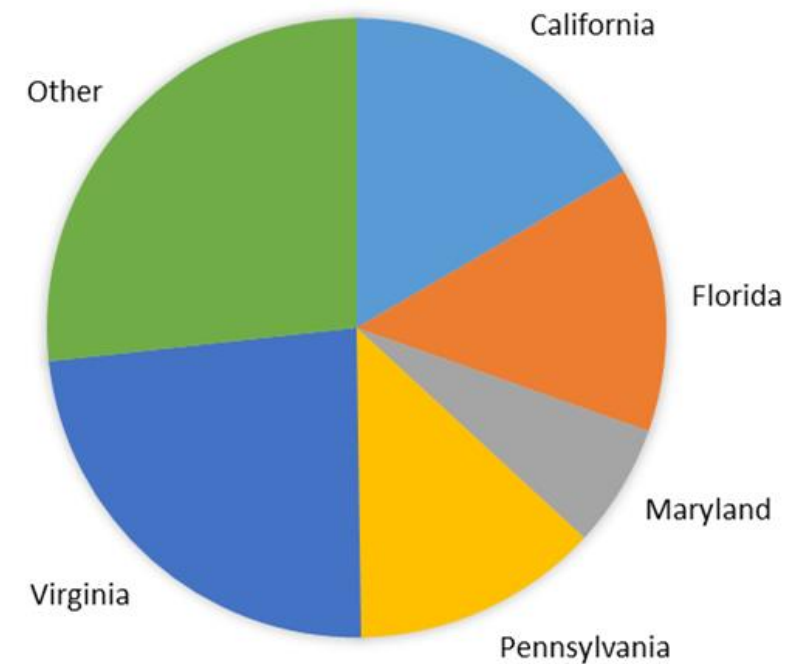
Orders Released
(NLT 90 days out)

First Shore Tour Opportunities

Overseas Billets: 100



Stateside Billets: 217



Seek Competitive Billets – Explore Overseas – Have Fun!

2nd Operational Tour Opportunities



Guam



Bremerton
Hampton Roads
San Diego
Yokosuka



Hampton Roads
Sasebo
San Diego



Guam
Gulfport
Hampton Roads
Pearl Harbor
Rota
San Diego
Stuttgart



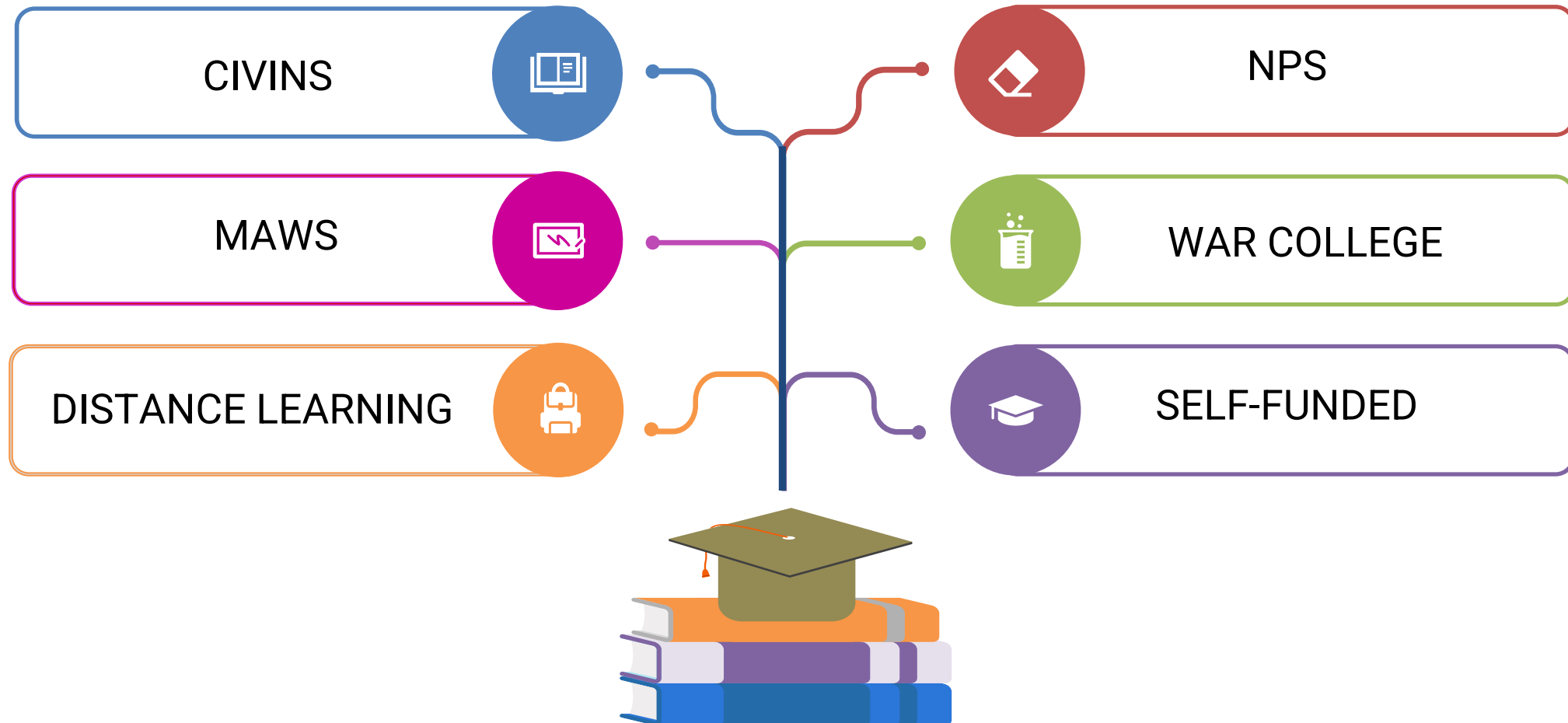
Bath
Hampton Roads
Mayport
Pearl
Pacific Northwest
Rota
San Diego
Sasebo
Yokosuka



Gaeta
Hampton Roads
San Diego
Yokosuka

“Department Head tour (especially valued)”

Postgraduate Opportunities



Continuous Learners Make Better Leaders

CDR Milestone



CY26 Detailing Cycle	
USS NIMITZ (CVN 68)	BREM
USS ABRAHAM LINCOLN (CVN 72)	SDGO
USS GEORGE WASHINGTON (CVN 73)	YOKSKA
USS JOHN C. STENNIS (CVN 74)	NORVA
USS GEORGE H.W. BUSH (CVN 77)	NORVA
USS JOHN F. KENNEDY (CVN 79)	N NEWS
USS KEARSARGE (LHD 3)	NORVA
USS BATAAN (LHD 5)	NORVA
USS AMERICA (LHA 6)	SDGO
USS BOUGAINVILLE (LHA 8)	NORVA
USS FRANK CABLE (AS 40)	AGANA
USS MERCY (TAH 19)	SDGO
PRIORITY MATERIAL OFFICE (PMO)	BREM
EOD ESU 1	CORND0
LOGSU 1	CORND0
LOGSU 8	PEARL
DLA TS I/P PH HI	PEARL
DLA DIST SIGO IT	SIGON
DLA DIST YOKO	YOKSKA
DLA ENE I/P GUAM	MTSANT
DCMA PITTSBURGH	PITBRG

CY27 Detailing Cycle	
USS DWIGHT D. EISENHOWER (CVN 69)	NORVA
USS CARL VINSON (CVN 70)	SDGO
USS THEODORE ROOSEVELT (CVN 71)	SDGO
USS HARRY S TRUMAN (CVN 75)	N NEWS
USS RONALD REAGAN (CVN 76)	BREM
USS GERALD R FORD (CVN 78)	NORVA
USS WASP (LHD 1)	NORVA
USS ESSEX (LHD 2)	SDGO
USS BOXER (LHD 4)	SDGO
USS IWO JIMA (LHD 7)	NORVA
USS TRIPOLI (LHA 7)	SASEBO
USS MAKIN ISLAND (LHD 8)	SDGO
USS EMORY S. LAND (AS 39)	AGANA
USS COMFORT (TAH 20)	NORVA
COMEXSTRKGRU 7	W BCH
EOD ESU 2	L CRK
LOGSU 2	L CRK
DD PSND DWCF	BREM
DLA DIST BAHRAIN	MANAMA
DLA DIST PH HI	PEARL
DLA ENE SLBCH CA	SEALBH
DLA ENE I/P HI	PEARL
DCMA LOCKHEED MARTIN	MOORES



Summer 2025 Board will include Promotion Year Groups: 2022, 2023 and 2024



CAPT Major Command



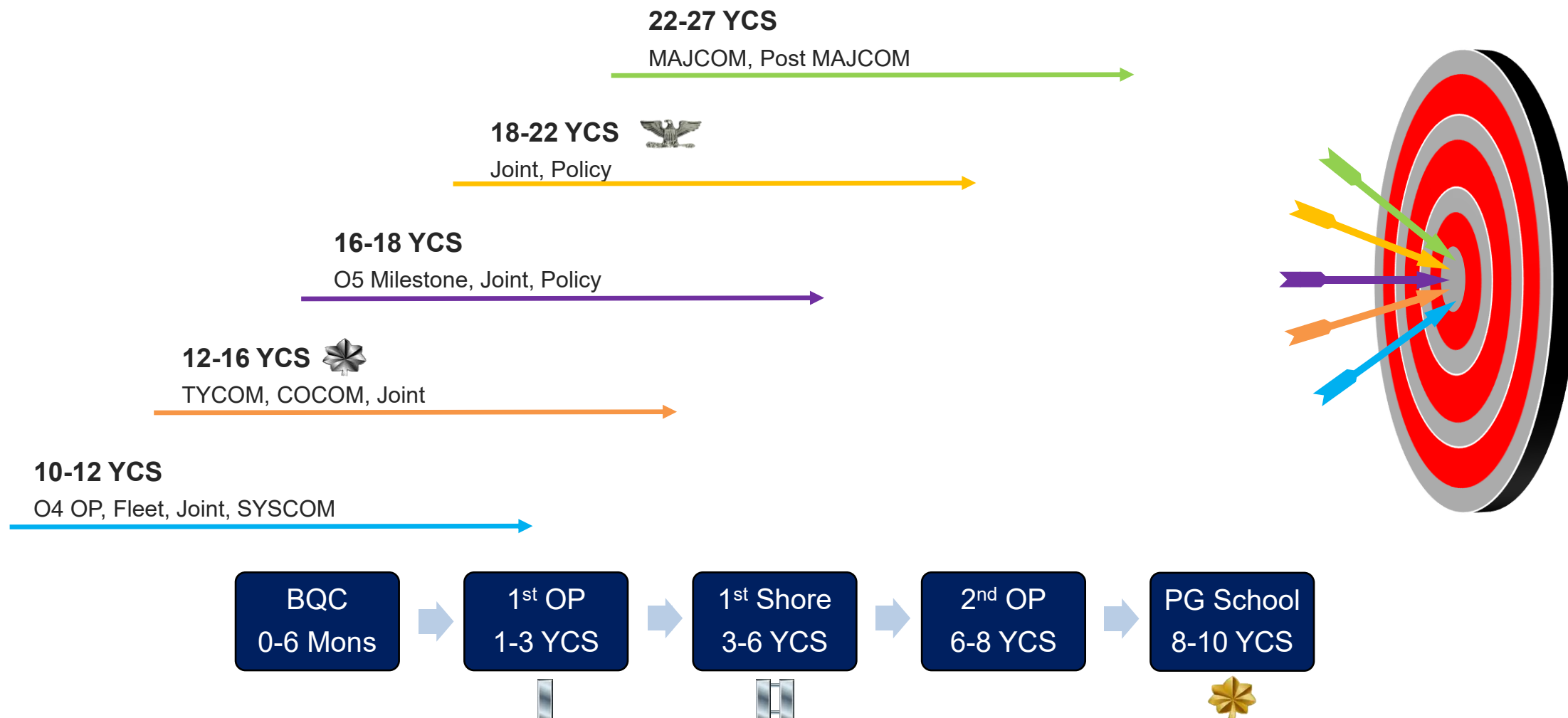
CY26 Detailing Cycle	
DCMA International	GRDAMS
DCMA Mid-Atlantic	CHNTIL
DLA Distribution San Diego	SDGO
DLA Indonesia Pacific	PEARL
Navy Supply Corps School	NEWPRT
NAVSEALOGCEN Keyport	MECH
NAVSUP Business Systems Center	MECH
NAVSUP FLC Norfolk	NORVA
NAVSUP FLC Pearl Harbor	PEARL
NAVSUP FLC Puget Sound	BREM
NAVSUP FLC San Diego	SDGO
NAVSUP FLC Yokosuka	YOKSKA

CY27 Detailing Cycle	
DCMA Missiles	FTWOR
DCMA Northeast	HAMAFB
DCMA Southern Europe	WEISBA
DLA Distribution Norfolk	NORVA
NAVSUP FLC Bahrain	MANAMA
NAVSUP FLC Jacksonville	JAX
NAVSUP FLC Sigonella	SIGON



Be “READY” to Lead and Serve Where Needed!

How do you define success?



“Follow Your Passion.” – VADM English

Family Resources



Basic Allowance for Housing (BAH) Flexibility – NAVADMIN 192/24

Authorizes Sailors to collect BAH based on dependents' location (previous duty station) when executing PCS orders.



Exceptional Families Member Program (EFMP)

Enrollment may limit where families can accompany their service member while also supporting sea duty, deployments, and overseas assignments.

Joint Travel Regulations (JTR)

Policy and law to establish travel and transportation allowances for Uniformed Service members

- Temporary Lodging Expense (TLE) Period Increase (**21 days**).
- Pet Transportation Expenses (up to **\$4,000**)

Military One Source

Provides comprehensive non-medical counseling support and information to service members and their families on every aspect of military life.



MyPCS Mobile App

Personalized checklist, apply for housing and childcare at next duty station, prepare and submit travel claims.



Stabilization for Sailors with High School Seniors

Implemented to provide families with the ability to remain in the same geographic location if the member's PRD falls within the dependent's junior year.