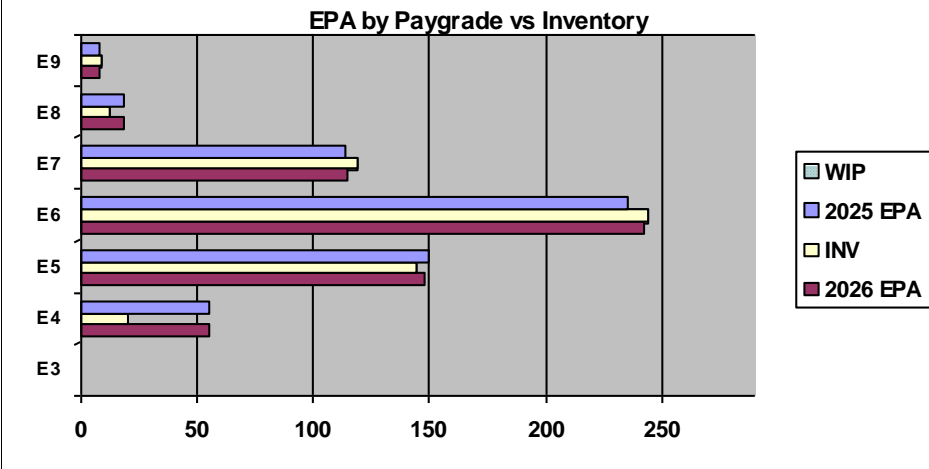
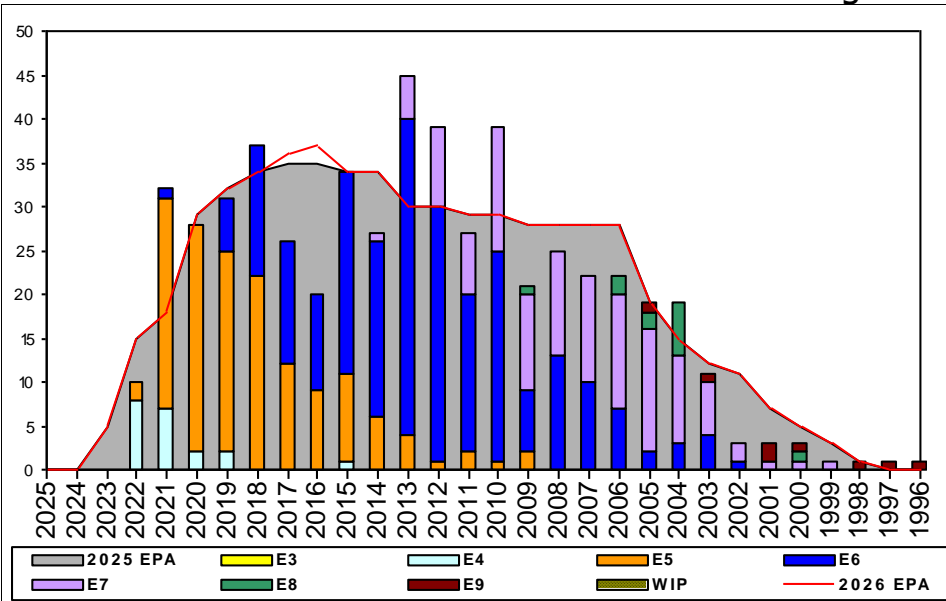


Legalman - B630



	E1-3	E4	E5	E6	E7	E8	E9	TOTAL
% INV to FY25 EPA		36%	96%	104%	104%	67%	113%	94%
EPA (FY25)		55	150	235	114	18	8	580
INVENTORY		20	144	244	119	12	9	548
EPA (FY26)		55	148	242	115	18	8	586
% INV to FY26 EPA		36%	96%	104%	104%	67%	113%	94%
INV +WIP / FY25 EPA								
INVENTORY								
INV +WIP / FY26 EPA								

Tour	SEA	SHORE
1ST	36	48
2ND	36	48
3RD	36	48
4TH	36	36
5TH	36	36
6TH	36	36
7TH	36	36

FORCE STRUCTURE MANNING TO BA											
PG	SEA	INV	BA	SHORE	INV	BA	SEA + SHORE	TOTAL INV	TOTAL BA		
E1-3											
E4	17.4%	4	23	37.5%	9	24	27.7%	13	47		
E5	170.0%	34	20	86.3%	101	117	98.5%	135	137		
E6	98.1%	53	54	106.4%	182	171	104.4%	235	225		
E7	133.3%	20	15	100.0%	96	96	104.5%	116	111		
E8				70.6%	12	17	70.6%	12	17		
E9				112.5%	9	8	112.5%	9	8		
Total	99.1%	111	112	94.5%	409	433	95.4%	520	545		

ADV OPP. (Cycles 261/262/264)

Pay Grade	E1-3	E4	E5	E6	E7	E8	E9
All-Navy	TIR	TIR	18.54	10.62%	31.44%	21.60%	22.32%
LN	TIR	0.0%	87.5%	21.6%	26.2%	11.5%	100.0%

Zone Info

	ZONE A	ZONE B	ZONE C	ZONE D	ZONE E	ALL ZONES
FY25 Manning:	134.0%	91.0%	107.0%	88.0%	64.0%	95.0%
FYTD RENL Rate:	100.0%	100.0%	100.0%	100.0%	50.0%	91.7%
FY26 Manning:	134.0%	89.0%	107.0%	88.0%	64.0%	93.5%

NOTES

Greetings LN Community!

LNs qualify for an SRB!!! – \$\$\$ Zone B \$\$\$

- Convert in opportunities for multiple YG's
- Rating conversions will be considered on a case-by-case basis.
- All Conversion packages must be submitted to Chief Anderson at tonia.a.anderson.mil@us.navy.mil
- The next available LN "A" school will class up July 2025.
- Current overall manning is 97%.
- ASVAB Waivers are not being entertained for single line score health. Time In Service Waivers are not being waived.
- JAGINST is in the process of being updated and will only accept E5 and Below convert in to LN rate.

LN ECM – NCCM Jason Caldera Jason.caldera.mil@us.navy.mil