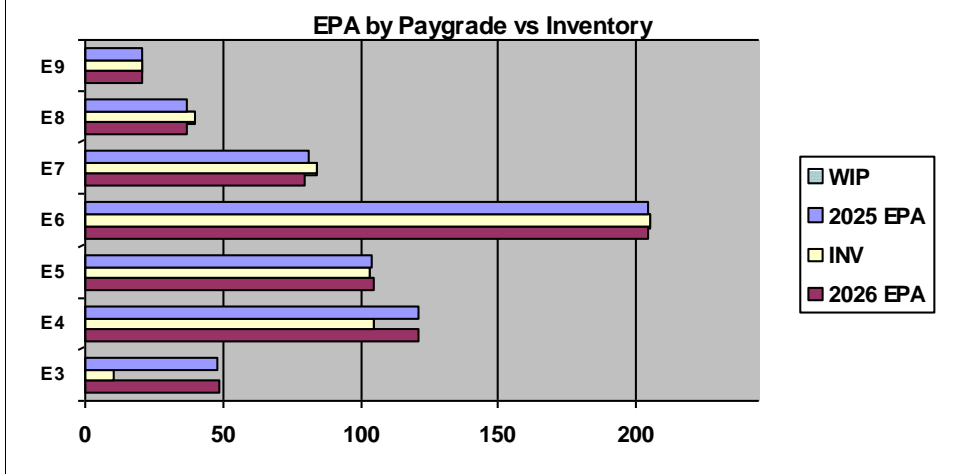
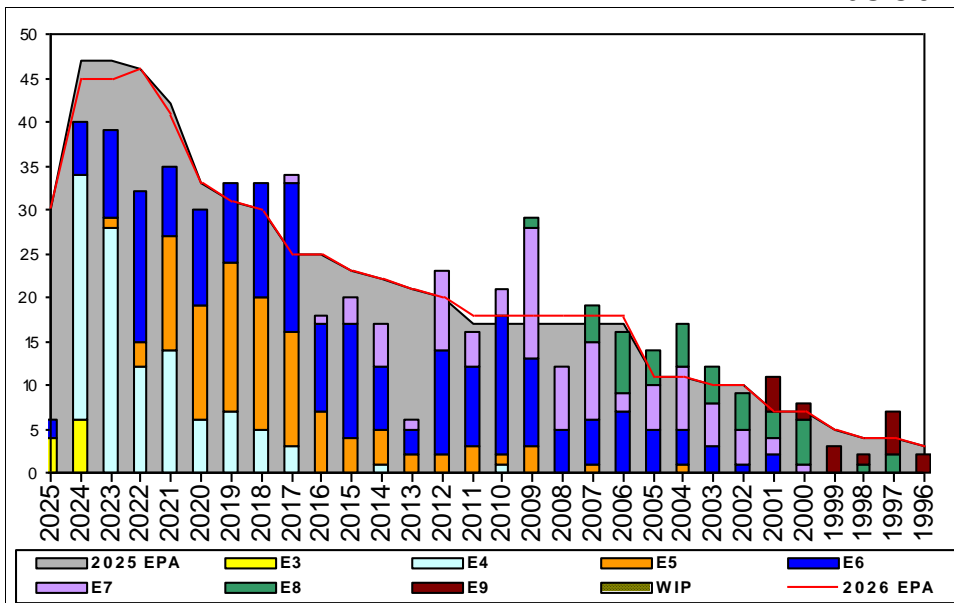


Musician - B660



	E1-3	E4	E5	E6	E7	E8	E9	TOTAL
% INV to FY25 EPA	21%	87%	99%	100%	104%	108%	100%	92%
EPA (FY25)	48	121	104	204	81	37	21	616
INVENTORY	10	105	103	205	84	40	21	568
EPA (FY26)	49	121	105	204	80	37	21	617
% INV to FY26 EPA	21%	87%	99%	100%	104%	108%	100%	92%
INV + WIP / FY25 EPA								
INVENTORY			← E-3 and Below WIP					
INV + WIP / FY26 EPA								

Tour	SEA	SHORE
1ST		
2ND		
3RD		
4TH		
5TH		
6TH		
7TH		

FORCE STRUCTURE MANNING TO BA											
PG	SEA	INV	BA	SHORE	INV	BA	SEA + SHORE	TOTAL INV	TOTAL BA		
E1-3	16.7%	1	6	5.4%	2	37	7.0%	3	43		
E4	75.0%	9	12	88.9%	96	108	87.5%	105	120		
E5	122.2%	11	9	94.6%	87	92	97.0%	98	101		
E6	125.0%	5	4	98.5%	193	196	99.0%	198	200		
E7	150.0%	3	2	103.9%	80	77	105.1%	83	79		
E8	100.0%	1	1	108.3%	39	36	108.1%	40	37		
E9				100.0%	21	21	100.0%	21	21		
Total	88.2%	30	34	91.4%	518	567	91.2%	548	601		

ADV OPP. (Cycles 261/262/264)

Pay Grade	E1-3	E4	E5	E6	E7	E8	E9
All-Navy	TIR	TIR	18.54	10.62%	31.44%	21.60%	22.32%
MU	TIR	50.0%	12.5%	23.7%	22.0%	19.0%	12.2%

Zone Info

	ZONE A	ZONE B	ZONE C	ZONE D	ZONE E	ALL ZONES
FY25 Manning:	82.0%	100.0%	74.0%	111.0%	110.0%	92.0%
FYTD RENL Rate:	80.0%	81.3%	100.0%	100.0%	50.0%	77.8%
FY26 Manning:	84.0%	100.0%	74.0%	105.0%	110.0%	92.1%

NOTES

Greetings MU Community!
Greetings MU Community!

Sailors interested in the MU rating require an audition with MU1 David Irving who is the Navy Music Program Auditions Supervisor and MU2 Jesse Chavez who is the Navy Music Program Auditions Coordinator.

The auditions team can be reached at:
NavyMusicAuditions@us.navy.mil 901-874-4316

ECM - PSC(SW/AW) Mercedes Theus mercedes.t.theus@navy.mil