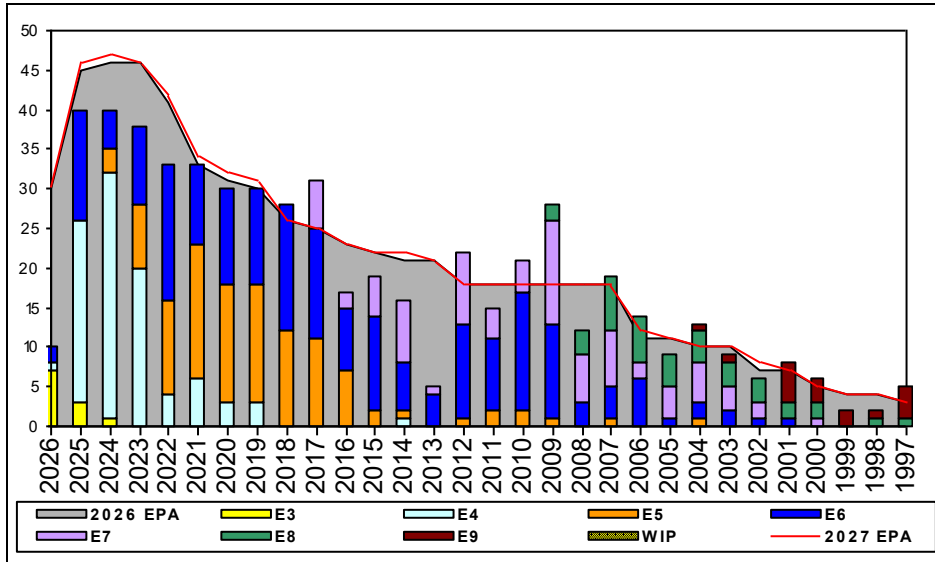


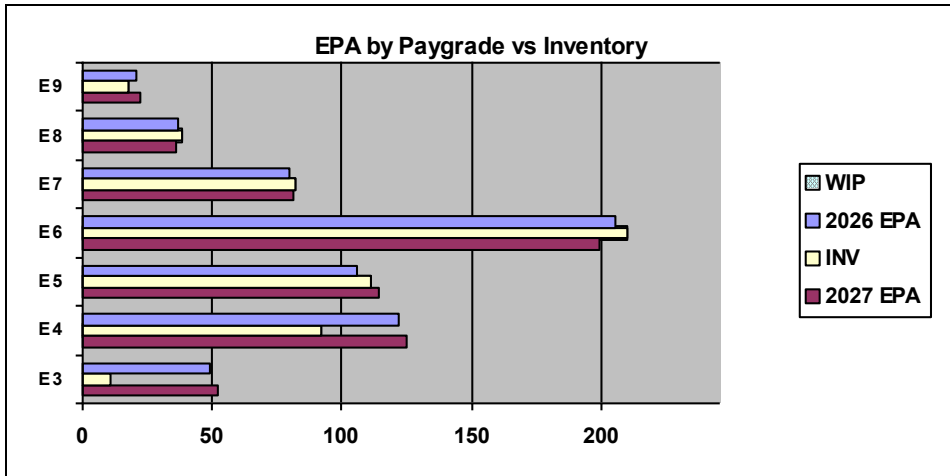
Musician - B660



Sea Shore Flow		
TOUR	SEA	SHORE
1ST		
2ND		
3RD		
4TH		
5TH		
6TH		
7TH		

FORCE STRUCTURE MANNING TO BA										
PG	SEA	INV	BA	SHORE	INV	BA	SEA + SHORE	TOTAL INV	TOTAL BA	
E1-3	0.0%		6	10.8%	4	37	9.3%	4	43	
E4	83.3%	10	12	75.0%	81	108	75.8%	91	120	
E5	100.0%	9	9	108.7%	100	92	107.9%	109	101	
E6	125.0%	5	4	100.5%	197	196	101.0%	202	200	
E7	200.0%	4	2	97.4%	75	77	100.0%	79	79	
E8	200.0%	2	1	100.0%	36	36	102.7%	38	37	
E9				85.7%	18	21	85.7%	18	21	
Total	88.2%	30	34	90.1%	511	567	90.0%	541	601	

TIS to PG Years	Pay Grade	E1-E3	E4	E5	E6	E7	E8	E9
	ALL Navy	TIS		2.2	4.0	8.7	13.8	17.8
TIG to PG Years	MU	TIS	0.8	4.9	5.3	13.7	19.2	22.8
	ALL Navy	TIG	1.3	1.8	4.6	5.7	5.0	4.6
	MU	TIG	0.8	3.6	2.9	9.9	6.1	4.6



Zone Info	ZONE A	ZONE B	ZONE C	ZONE D	ZONE E	ALL ZONES
FY26 Manning:	88.0%	96.0%	71.0%	106.0%	94.0%	91.0%
FYTD RENL Rate:	82.1%	77.8%	100.0%	97.4%	41.9%	76.8%

NOTES

*** MAY YOUR MONTH BE FULL OF SUCCESS! #MUSTRONG ***

Interested in becoming a MU?
To inquire about an addition, please contact MU1 David Irving and MU2 Jesse Chavez who is the Navy Music Program Auditions Coordinators at NavyMusicAuditions@us.navy.mil.

MU ECM - PSC(SW/AW) Mercedes Theus
mercedes.t.theus.mil@us.navy.mil

	E1-3	E4	E5	E6	E7	E8	E9	TOTAL
% INV to FY26 EPA	22%	75%	105%	102%	103%	103%	86%	91%
EPA (FY26)	49	122	106	205	80	37	21	620
INVENTORY	11	92	111	210	82	38	18	562
EPA (FY27)	52	125	114	199	81	36	22	629
% INV to FY27 EPA	21%	74%	97%	106%	101%	106%	82%	89%
INV + WIP / FY26 EPA								
INVENTORY			← E-3 and Below WIP					
INV + WIP / FY26 EPA								