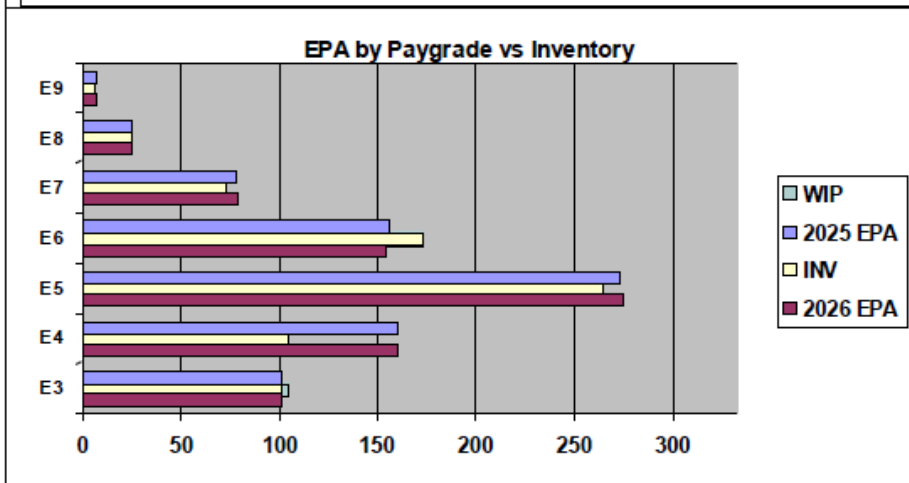
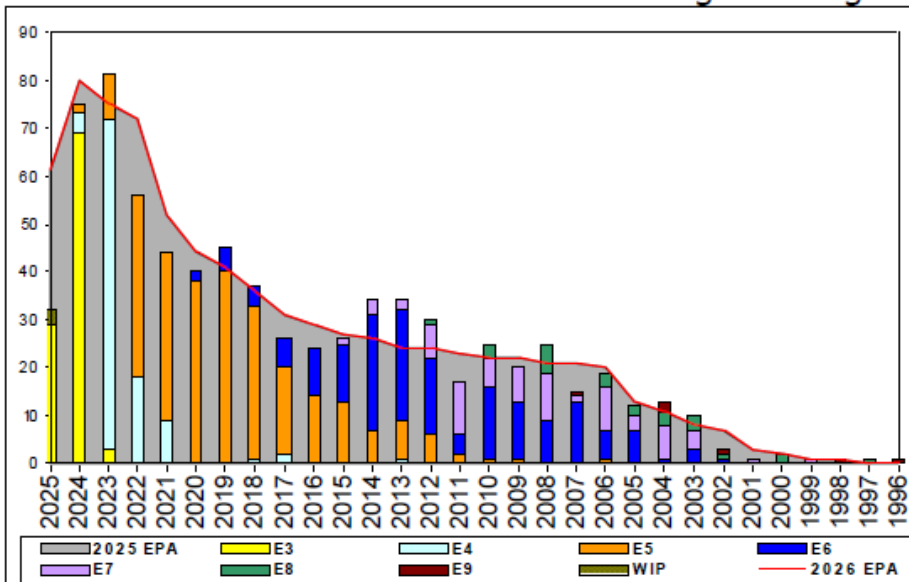


Religious Program Specialist - B720



	E1-3	E4	E5	E6	E7	E8	E9	TOTAL
% INV to FY25 EPA	100%	65%	97%	111%	94%	100%	86%	93%
EPA (FY25)	101	161	273	156	78	25	7	801
INVENTORY	101	104	265	173	73	25	6	747
EPA (FY26)	101	161	275	155	79	25	7	803
% INV to FY26 EPA	100%	65%	97%	111%	94%	100%	86%	93%
INV +WIP / FY25 EPA	103%							94%
INVENTORY	104	3	← E-3 and Below WIP					750
INV +WIP / FY26 EPA	103%							93%

Sea Shore Flow

TOUR	SEA	SHORE
1ST	36	36
2ND	36	36
3RD	36	36
4TH	36	36
5TH	36	36
6TH	36	36
7TH	36	36

FORCE STRUCTURE MANNING TO BA

PG	SEA	INV	BA	SHORE	INV	BA	SEA + SHORE	TOTAL INV	TOTAL BA
E1-3	202.9%	71	35	41.7%	20	48	109.6%	91	83
E4	51.5%	53	103	81.5%	44	54	61.8%	97	157
E5	76.6%	108	141	123.5%	147	119	98.1%	255	260
E6	134.0%	71	53	99.0%	96	97	111.3%	167	150
E7	95.7%	22	23	90.4%	47	52	92.0%	69	75
E8	111.1%	10	9	88.2%	15	17	96.2%	25	26
E9				100.0%	6	6	100.0%	6	6
Total	92.0%	335	364	95.4%	375	393	93.8%	710	757

TIS to PG Years	Pay Grade	E1-E3	E4	E5	E6	E7	E8	E9
ALL Navy	TIS		2.3	4.0	8.7	14.0	17.8	21.8
TIG to PG Years	RP	TIS	2.2	4.0	9.4	13.7	17.6	20.7
ALL Navy	TIG		1.3	1.9	4.7	5.9	5.1	4.7
RP	TIG		1.2	2.0	5.6	6.0	5.0	3.3

Zone Info

	ZONE A	ZONE B	ZONE C	ZONE D	ZONE E	ALL ZONES
FY25 Manning:	88.0%	90.0%	122.0%	97.0%	87.0%	94.0%
FYTD RENL Rate:	75.0%	74.1%	95.2%	100.0%	58.3%	78.6%

NOTES

**** CONGRATULATIONS TO OUR NEW RPC(SEL)'S!! ****
**** WELCOME TO THE MESS! ****

- Conversion opportunities: Will be considered on a case by case bases.
- PACT and Conversion Sailors submitting a 1306 must have the following:
 - Interviewed and recommended by a Navy Chaplain/RP of at least one Chaplain of the rank of LCDR or above and one RP the rank of E6 or above.
 - Must complete at least 30 days on-the-job training under the supervision of a Chaplain and a RP.
 - Required security clearance.
 - CO recommendation with emphasis on moral character.
 - Must complete and pass a run for PRT. Alternative cardio not authorized.
 - RP Screening Form (request from email below)

ECM - PSC(SW/AW) Mercedes Theus mercedes.t.theus.mil@us.navy.mil

Data Source: NMPBS(Inv)/NRMS(RE Rate)/N12(EPA/SSF)/BUPERS3(Adv Op) **As of Date:** 08-Aug-25