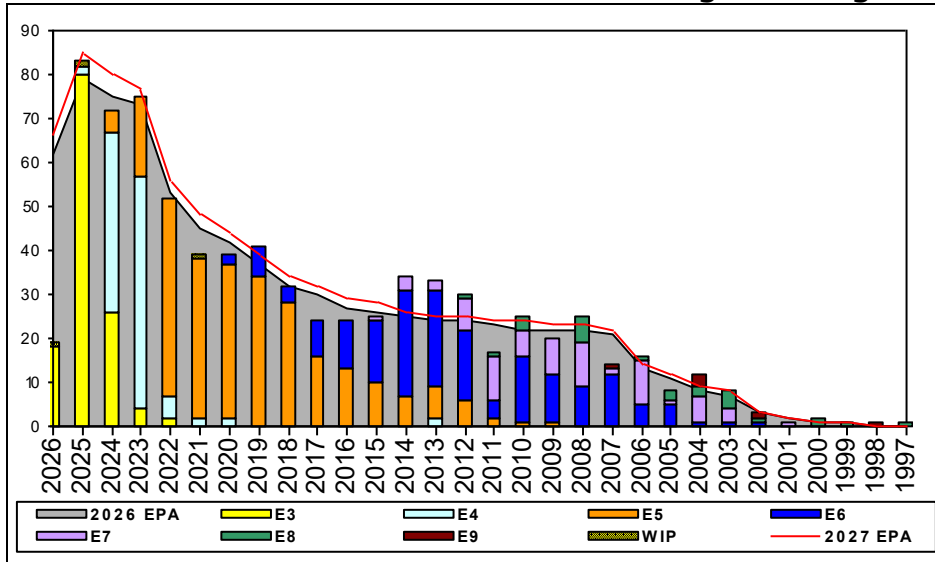


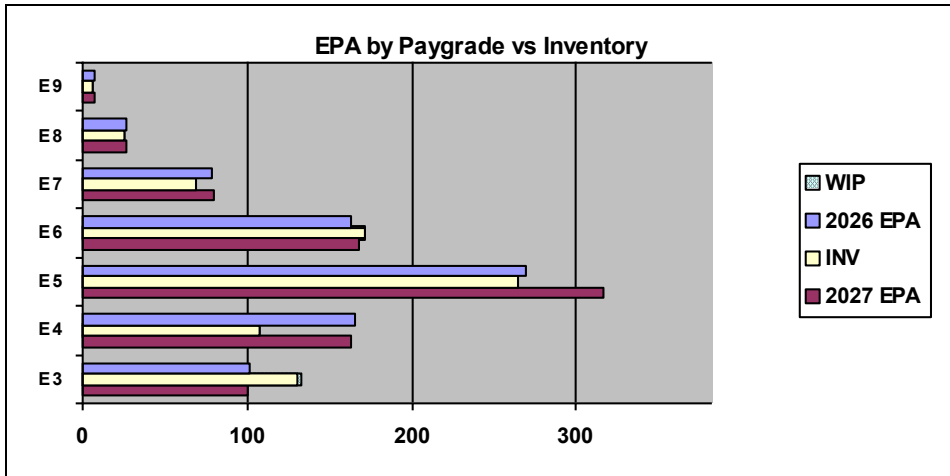
Religious Program Specialist - B720



Sea Shore Flow		
TOUR	SEA	SHORE
1ST	36	36
2ND	36	36
3RD	36	36
4TH	36	36
5TH	36	36
6TH	36	36
7TH	36	36

FORCE STRUCTURE MANNING TO BA										
PG	SEA	INV	BA	SHORE	INV	BA	SEA + SHORE	TOTAL INV	TOTAL BA	
E1-3	200.0%	70	35	85.7%	36	42	137.7%	106	77	
E4	65.3%	79	121	43.4%	23	53	58.6%	102	174	
E5	69.8%	90	129	131.5%	167	127	100.4%	257	256	
E6	109.7%	68	62	103.1%	100	97	105.7%	168	159	
E7	90.9%	20	22	96.1%	49	51	94.5%	69	73	
E8	88.9%	8	9	100.0%	17	17	96.2%	25	26	
E9				83.3%	5	6	83.3%	5	6	
Total	88.6%	335	378	101.0%	397	393	94.9%	732	771	

TIS to PG Years	Pay Grade	E1-E3	E4	E5	E6	E7	E8	E9
	ALL Navy	TIS	2.2	4.0	8.7	13.8	17.8	21.8
TIG to PG Years	RP	TIS	2.4	4.0	9.3	13.7	18.2	20.2
	ALL Navy	TIG	1.3	1.8	4.6	5.7	5.0	4.6
	RP	TIG	1.3	2.0	5.5	6.1	5.2	3.3



Zone Info	ZONE A	ZONE B	ZONE C	ZONE D	ZONE E	ALL ZONES
FY26 Manning:	92.0%	91.0%	111.0%	98.0%	98.0%	95.0%
FYTD RENL Rate:	76.3%	71.0%	93.1%	100.0%	55.0%	77.8%

NOTES

*** MAY YOUR MONTH BE FULL OF SUCCESS! #RPSTRONG ***

-Conversion opportunities will be considered on a case by case bases.

-Sailors requesting RP via PACT or lateral conversion must submit a 1306 with a completed RP screening. Request to receive a package by emailing the ECM below.

SRB available for Zone A and B! Get with your CCC to work on your SRB reenlistment!

RP ECM - PSC(SW/AW) Mercedes Theus mercedes.t.theus.mil@us.navy.mil

	E1-3	E4	E5	E6	E7	E8	E9	TOTAL
% INV to FY26 EPA	129%	65%	98%	106%	87%	96%	86%	95%
EPA (FY26)	101	165	269	163	79	26	7	810
INVENTORY	130	107	264	172	69	25	6	773
EPA (FY27)	100	163	316	168	80	26	7	860
% INV to FY27 EPA	130%	66%	84%	102%	86%	96%	86%	90%
INV + WIP / FY26 EPA	132%							96%
INVENTORY	133	3 ← E-3 and Below WIP						776
INV + WIP / FY26 EPA	133%							90%