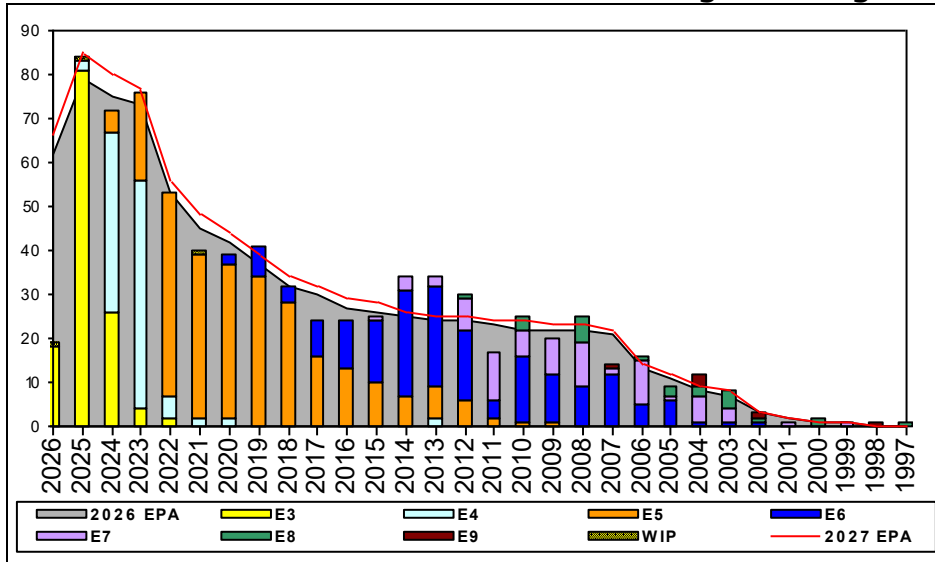


Religious Program Specialist - B720



Sea Shore Flow

TOUR	SEA	SHORE
1ST	36	36
2ND	36	36
3RD	36	36
4TH	36	36
5TH	36	36
6TH	36	36
7TH	36	36

FORCE STRUCTURE MANNING TO BA

PG	SEA	INV	BA	SHORE	INV	BA	SEA + SHORE	TOTAL INV	TOTAL BA
E1-3	200.0%	70	35	81.0%	34	42	135.1%	104	77
E4	64.5%	78	121	43.4%	23	53	58.0%	101	174
E5	71.3%	92	129	130.7%	166	127	100.8%	258	256
E6	114.5%	71	62	102.1%	99	97	106.9%	170	159
E7	81.8%	18	22	100.0%	51	51	94.5%	69	73
E8	77.8%	7	9	88.2%	15	17	84.6%	22	26
E9				100.0%	6	6	100.0%	6	6
Total	88.9%	336	378	100.3%	394	393	94.7%	730	771

TIS to PG Years

Pay Grade	E1-E3	E4	E5	E6	E7	E8	E9
ALL Navy	TIS	2.2	4.0	8.7	13.8	17.8	21.7
RP	TIS	2.4	4.0	9.3	13.7	17.8	20.2
ALL Navy	TIG	1.3	1.8	4.6	5.7	5.0	4.6
RP	TIG	1.3	2.0	5.5	6.1	5.1	3.3

TIG to PG Years

Zone Info

	ZONE A	ZONE B	ZONE C	ZONE D	ZONE E	ALL ZONES
FY26 Manning:	93.0%	91.0%	113.0%	97.0%	100.0%	96.0%
FYTD RENL Rate:	76.3%	71.0%	93.1%	100.0%	55.0%	77.8%

NOTES

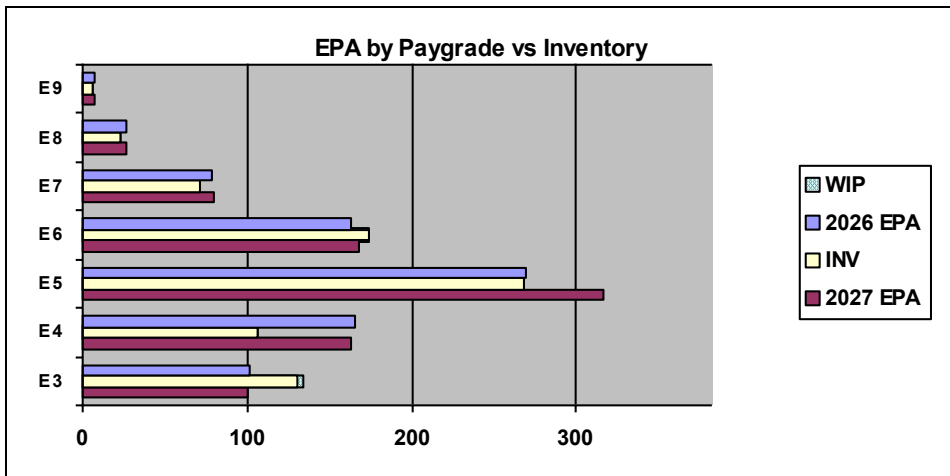
*** APRIL SHOWERS BRINGS MAY FLOWERS! KEEP BLOOMING RPs! ***

-Conversion opportunities will be considered on a case by case bases.

-PACT and Lateral Conversion Sailors submitting a 1306 must request an RP screening from the ECM via email listed below.

SRB available for Zone A and B! Get with your CCC to work on your SRB reenlistment!

RP ECM - PSC(SW/AW) Mercedes Theus mercedes.t.theus.mil@us.navy.mil



	E1-3	E4	E5	E6	E7	E8	E9	TOTAL
% INV to FY26 EPA	130%	64%	100%	107%	90%	88%	86%	96%
EPA (FY26)	101	165	269	163	79	26	7	810
INVENTORY	131	106	268	174	71	23	6	779
EPA (FY27)	100	163	316	168	80	26	7	860
% INV to FY27 EPA	131%	65%	85%	104%	89%	88%	86%	91%
INV + WIP / FY26 EPA	133%							97%
INVENTORY	134	3 ← E-3 and Below WIP						782
INV + WIP / FY26 EPA	134%							91%