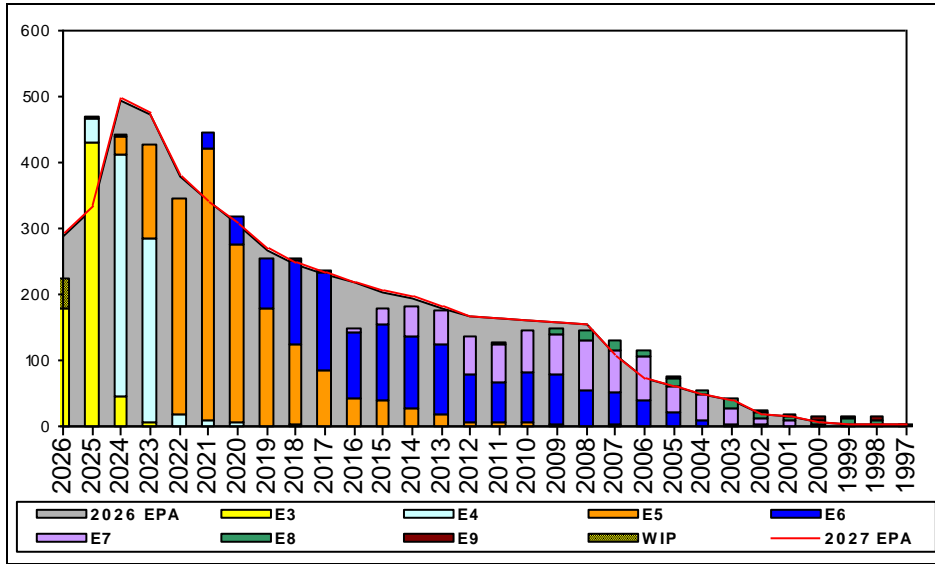


Yeoman - B750



Sea Shore Flow

TOUR	SEA	SHORE
1ST	36	36
2ND	36	48
3RD	36	48
4TH	36	36
5TH	36	36
6TH	36	36
7TH	36	36

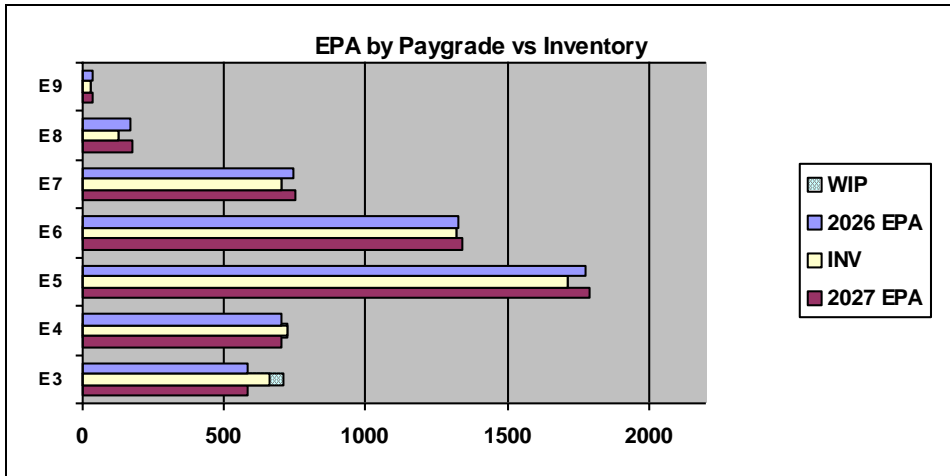
FORCE STRUCTURE MANNING TO BA

PG	SEA	INV	BA	SHORE	INV	BA	SEA + SHORE	TOTAL INV	TOTAL BA
E1-3	124.6%	349	280	181.2%	212	117	141.3%	561	397
E4	101.3%	466	460	84.6%	230	272	95.1%	696	732
E5	81.8%	611	747	108.7%	1022	940	96.8%	1633	1687
E6	93.5%	464	496	101.3%	805	795	98.3%	1269	1291
E7	89.9%	259	288	96.6%	429	444	94.0%	688	732
E8	61.5%	24	39	76.3%	100	131	72.9%	124	170
E9	50.0%	1	2	82.8%	24	29	80.6%	25	31
Total	94.0%	2174	2312	103.4%	2822	2728	99.1%	4996	5040

TIS to PG Years

Pay Grade	E1-E3	E4	E5	E6	E7	E8	E9
ALL Navy	TIS	2.2	4.0	8.7	13.8	17.8	21.8
YN	TIS	2.2	3.6	8.6	13.7	19.5	24.8
ALL Navy	TIG	1.3	1.8	4.6	5.7	5.0	4.6
YN	TIG	1.1	1.4	4.7	5.6	6.4	5.3

TIG to PG Years



Zone Info

	ZONE A	ZONE B	ZONE C	ZONE D	ZONE E	ALL ZONES
FY26 Manning:	107.0%	90.0%	87.0%	91.0%	119.0%	99.0%
FYTD RENL Rate:	86.0%	73.9%	94.6%	100.0%	42.0%	81.2%

NOTES

Rating conversions will be considered on a case-by-case basis with a letter of recommendation from an ADMIN khaki at the command

Recommending no convert-ins for all paygrades for PACT, Lateral, Force, or RC2AC Conversions due to limited billet availability for all paygrades.

YN ECM – YNCM Michael D. Campbell michael.d.campbell3.mil@us.navy.mil

“Power through Paper, Excellence in Execution”

	E1-3	E4	E5	E6	E7	E8	E9	TOTAL
% INV to FY26 EPA	113%	102%	96%	100%	95%	75%	76%	99%
EPA (FY26)	584	703	1777	1325	746	167	34	5336
INVENTORY	660	720	1712	1319	705	126	26	5268
EPA (FY27)	583	703	1790	1341	748	172	34	5371
% INV to FY27 EPA	113%	102%	96%	98%	94%	73%	76%	98%
INV + WIP / FY26 EPA	121%							100%
INVENTORY	707	47 ← E-3 and Below WIP						5315
INV + WIP / FY26 EPA	121%							99%