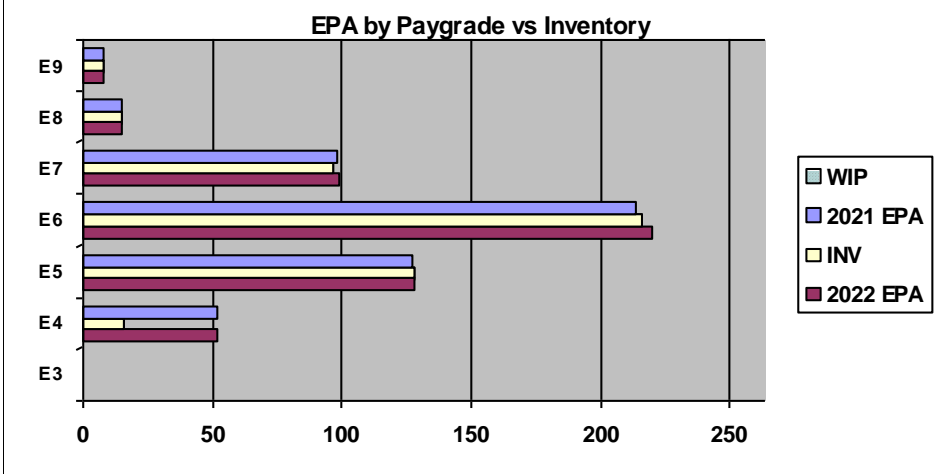
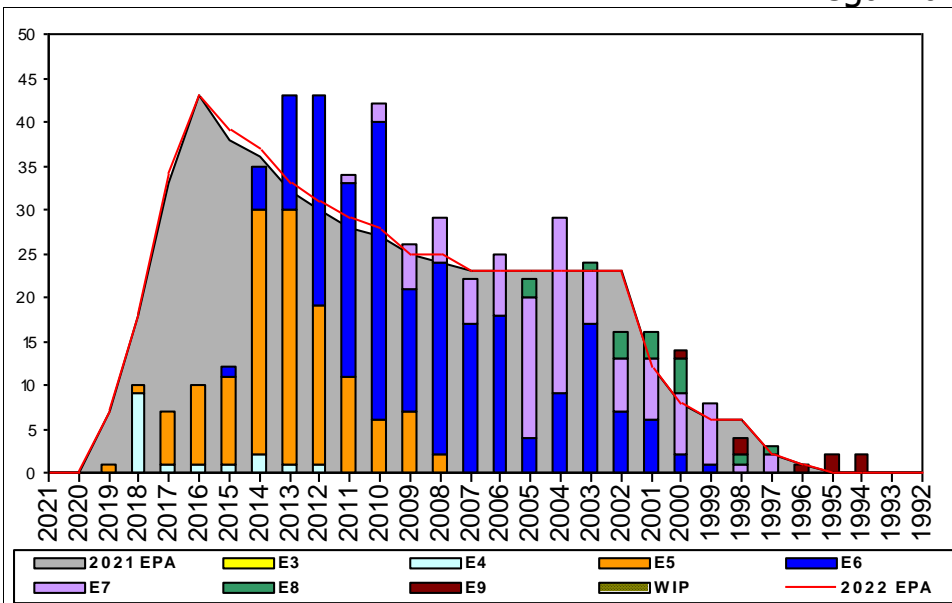


# Legalman - B630



	E1-3	E4	E5	E6	E7	E8	E9	TOTAL
% INV to FY21 EPA		31%	101%	101%	99%	100%	100%	93%
EPA (FY21)		52	127	214	98	15	8	514
INVENTORY		16	128	216	97	15	8	480
EPA (FY22)		52	128	220	99	15	8	522
% INV to FY22 EPA		31%	100%	98%	98%	100%	100%	92%
INV +WIP / FY21 EPA								
INVENTORY			← E-3 and Below WIP					
INV +WIP / FY22 EPA								

Sea Shore Flow		
TOUR	SEA	SHORE
1ST	36	48
2ND	36	48
3RD	36	48
4TH	36	36
5TH	36	36
6TH	36	36
7TH	36	36

FORCE STRUCTURE MANNING TO BA										
PG	SEA	INV	BA	SHORE	INV	BA	SEA + SHORE	TOTAL INV	TOTAL BA	
E1-3										
E4	21.7%	5	23	31.8%	7	22	26.7%	12	45	
E5	117.6%	20	17	89.7%	96	107	93.5%	116	124	
E6	107.7%	56	52	95.5%	148	155	98.6%	204	207	
E7	121.4%	17	14	94.0%	78	83	97.9%	95	97	
E8	0.0%	1		86.7%	13	15	93.3%	14	15	
E9				100.0%	8	8	100.0%	8	8	
<b>Total</b>	93.4%	99	106	89.7%	350	390	90.5%	449	496	

ADV OPP. (Cycles 245/246/247)							
All-Navy 10yr Avg	E1-3	E4	E5	E6	E7	E8	E9
	TIR	34.9%	22.1%	13.9%	22.0%	11.6%	13.1%
All-Navy	TIR	28.3%	20.8%	8.1%	25.9%	13.6%	12.3%
LN	TIR	0.0%	100.0%	16.1%	13.5%	3.4%	14.3%

## Zone Info

	ZONE A	ZONE B	ZONE C	ZONE D	ZONE E	ALL ZONES
FY21 Manning:	31.0%	101.0%	127.0%	98.0%	126.0%	93.0%
FYTD RENL Rate:	100.0%	88.9%	86.4%	90.9%	22.2%	81.6%
FY22 Manning:	30.0%	99.0%	123.0%	98.0%	126.0%	92.0%

## NOTES

- Early retirements or modification in retirement requests need to be communicated prior to submitting via NSIPS.
- HYT waivers are case by case basis.
- Early transition opportunities can be found at <https://www.public.navy.mil/bupers-npc/enlisted/community/Pages/EETP.aspx>
- There is a critical need for E4 LN conversion packages. SUBMIT, SUBMIT, SUBMIT ☐.
- The next available LN "A" school will class up June 2022

NC ECM – elissa.cook@navy.mil