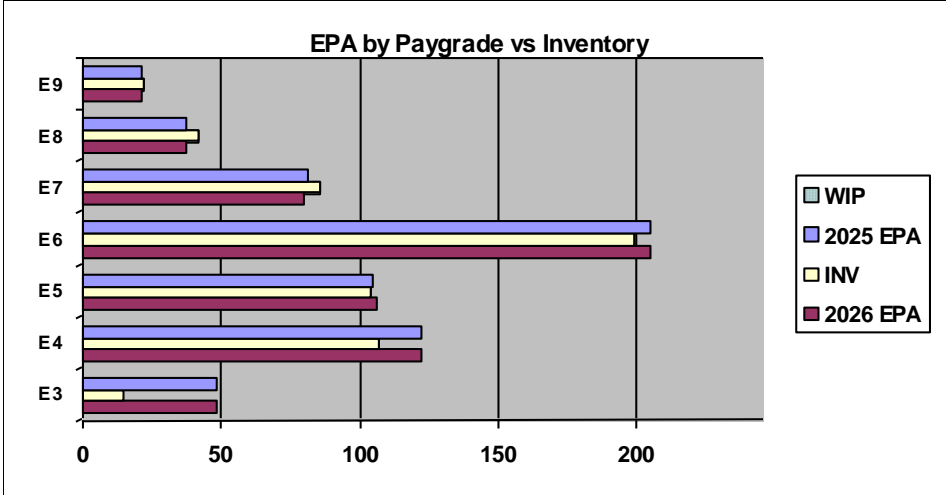
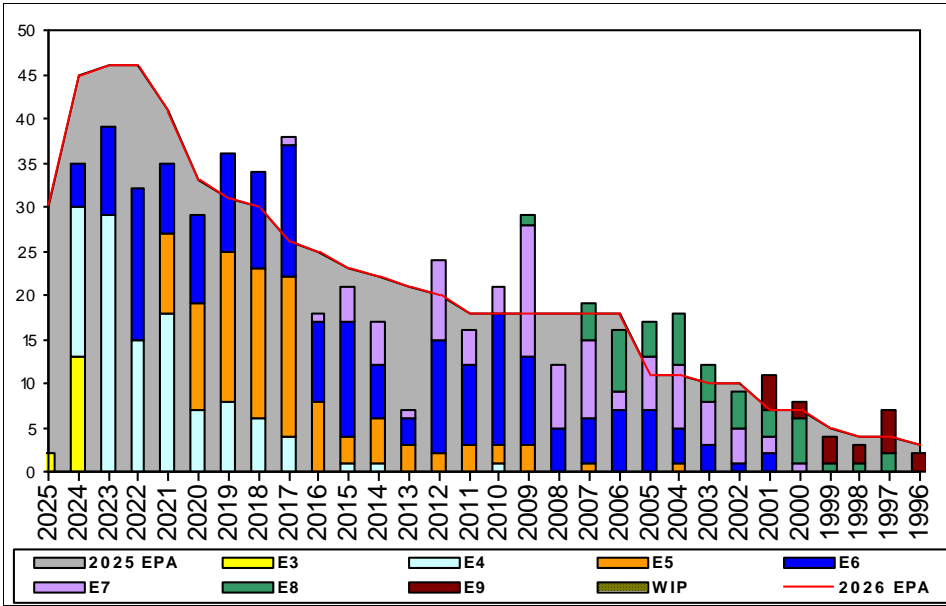


# Musician - B660



	E1-3	E4	E5	E6	E7	E8	E9	TOTAL
<b>% INV to FY25 EPA</b>	<b>31%</b>	<b>88%</b>	<b>99%</b>	<b>97%</b>	<b>106%</b>	<b>114%</b>	<b>105%</b>	<b>93%</b>
<b>EPA (FY25)</b>	48	122	105	205	81	37	21	619
<b>INVENTORY</b>	15	107	104	199	86	42	22	575
<b>EPA (FY26)</b>	48	122	106	205	80	37	21	619
<b>% INV to FY26 EPA</b>	<b>31%</b>	<b>88%</b>	<b>99%</b>	<b>97%</b>	<b>106%</b>	<b>114%</b>	<b>105%</b>	<b>93%</b>
<b>INV +WIP / FY25 EPA</b>								
<b>INVENTORY</b>			← E-3 and Below WIP					
<b>INV +WIP / FY26 EPA</b>								

Sea Shore Flow		
TOUR	SEA	SHORE
1ST		
2ND		
3RD		
4TH		
5TH		
6TH		
7TH		

FORCE STRUCTURE MANNING TO BA										
PG	SEA	INV	BA	SHORE	INV	BA	SEA + SHORE	TOTAL INV	TOTAL BA	
E1-3	0.0%		6	0.0%		37	0.0%		43	
E4	75.0%	9	12	89.8%	97	108	88.3%	106	120	
E5	144.4%	13	9	96.7%	89	92	101.0%	102	101	
E6	125.0%	5	4	95.4%	187	196	96.0%	192	200	
E7	100.0%	2	2	106.5%	82	77	106.3%	84	79	
E8	100.0%	1	1	113.9%	41	36	113.5%	42	37	
E9				104.8%	22	21	104.8%	22	21	
<b>Total</b>	<b>88.2%</b>	<b>30</b>	<b>34</b>	<b>91.4%</b>	<b>518</b>	<b>567</b>	<b>91.2%</b>	<b>548</b>	<b>601</b>	

### ADV OPP. (Cycles 261/262/263)

Pay Grade	E1-3	E4	E5	E6	E7	E8	E9
<b>All-Navy</b>	TIR	TIR	21.19	10.95%	31.44%	21.60%	22.32%
<b>MU</b>	TIR	50.0%	10.3%	28.4%	22.0%	19.0%	12.2%

### Zone Info

	ZONE A	ZONE B	ZONE C	ZONE D	ZONE E	ALL ZONES
<b>FY25 Manning:</b>	<b>83.0%</b>	<b>104.0%</b>	<b>76.0%</b>	<b>106.0%</b>	<b>108.0%</b>	<b>93.0%</b>
<b>FYTD RENL Rate:</b>	71.4%	75.0%	100.0%	100.0%		73.3%
<b>FY26 Manning:</b>	<b>83.0%</b>	<b>104.0%</b>	<b>76.0%</b>	<b>106.0%</b>	<b>108.0%</b>	<b>92.9%</b>

### NOTES

Rating manned at 93% for FY25 Enlisted Program Authorization.

The MU rating requires an audition. MU1 David Irving is the Navy Music Program Auditions Supervisor and MU2 Seville Jenkins is the Navy Music Program Auditions Coordinator. The auditions team can be reached at: NavyMusicAuditions@us.navy.mil 901-874-4316