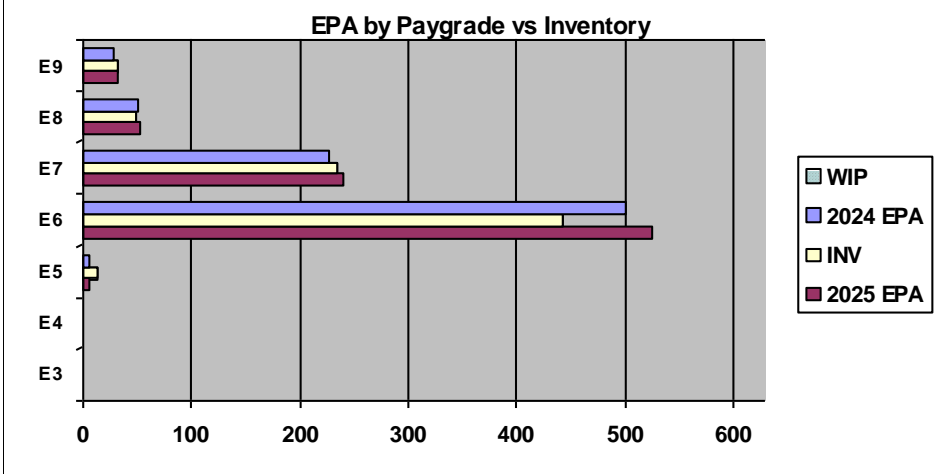
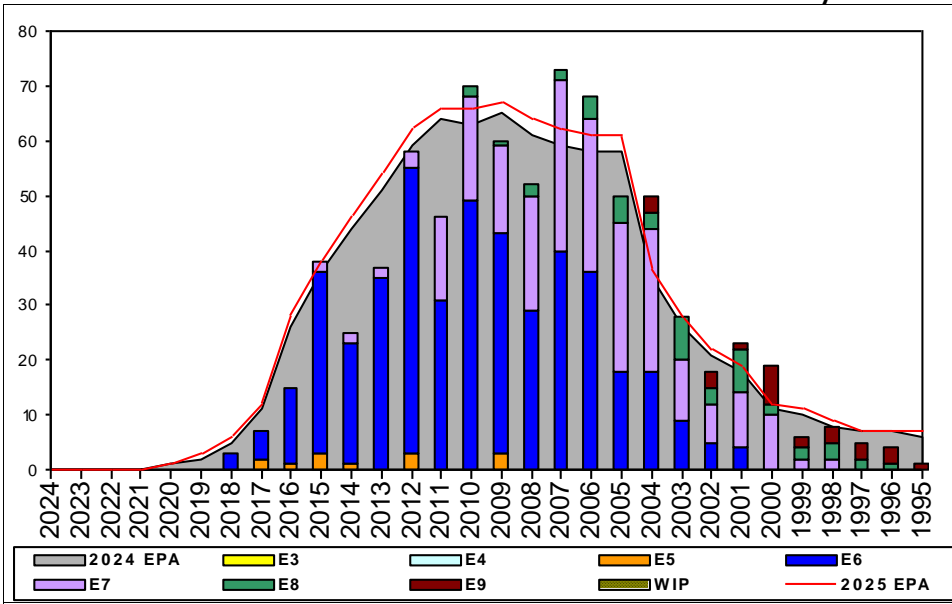


Navy Counselor - B670



	E1-3	E4	E5	E6	E7	E8	E9	TOTAL
% INV to FY24 EPA			260%	88%	103%	96%	107%	95%
EPA (FY24)			5	501	227	50	29	812
INVENTORY			13	443	234	48	31	769
EPA (FY25)			6	525	240	53	32	856
% INV to FY25 EPA			217%	84%	98%	91%	97%	90%
INV +WIP / FY24 EPA								
INVENTORY			← E-3 and Below WIP					
INV +WIP / FY25 EPA								

Sea Shore Flow		
TOUR	SEA	SHORE
1ST		
2ND	36	36
3RD	42	36
4TH	36	36
5TH	36	36
6TH	36	36
7TH	36	36

FORCE STRUCTURE MANNING TO BA										
PG	SEA	INV	BA	SHORE	INV	BA	SEA + SHORE	TOTAL INV	TOTAL BA	
E1-3										
E4										
E5	700.0%	7	1	600.0%	6	1	650.0%	13	2	
E6	87.5%	258	295	83.3%	165	198	85.8%	423	493	
E7	125.0%	80	64	92.3%	143	155	101.8%	223	219	
E8	93.3%	14	15	91.4%	32	35	92.0%	46	50	
E9	100.0%	11	11	105.6%	19	18	103.4%	30	29	
Total	95.9%	370	386	89.7%	365	407	92.7%	735	793	

ADV OPP. (Cycles 257/258/260)							
Pay Grade	E1-3	E4	E5	E6	E7	E8	E9
All-Navy	TIR	45.0%	29.0%	9.0%	28.8%	16.8%	21.0%
NC	TIR	0.0%	0.0%	56.5%	29.8%	13.7%	100.0%

Zone Info		ZONE A	ZONE B	ZONE C	ZONE D	ZONE E	ALL ZONES
FY24 Manning:		33.0%	95.0%	87.0%	103.0%	87.0%	95.0%
FYTD RENL Rate:		100.0%	84.6%	100.0%	100.0%	54.8%	84.8%
FY25 Manning:		25.0%	88.0%	83.0%	98.0%	82.0%	89.8%

NOTES

Greetings NC Community!

- Community health is manned at 95%. There is a need for E6 packages
- Package submissions must be IAW MILPERSMAN 1440-020
- The Command Career Counselor PQS (NAVEDTRA 43699-D) has been updated
- Fleet Reserve / retirements or modification to requests need to be communicated prior to submitting via NSIPS
- HYT Waiver: Per NAVADMIN 277/23: Please review NAVADMIN in full.

NC ECM - NCCM Caldera: Jason.caldera2@navy.mil