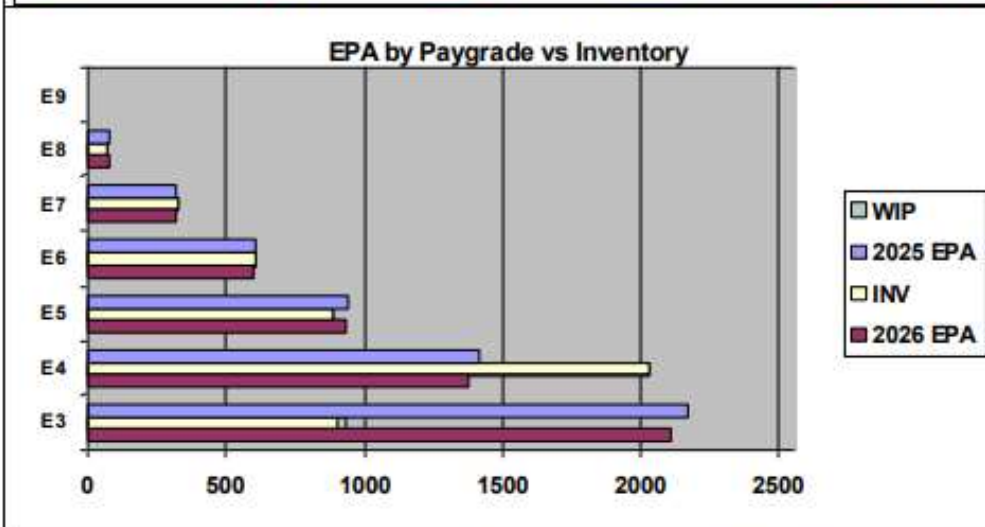
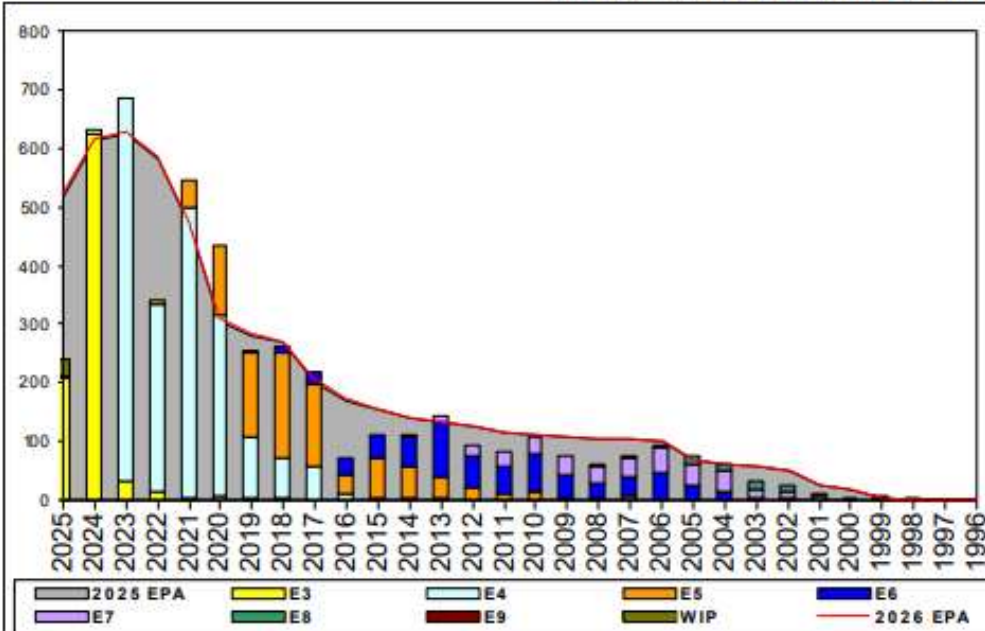


Aviation Boatswain's Mate-Aircraft Handling - A103



	E1-3	E4	E5	E6	E7	E8	E9	TOTAL
% INV to FY25 EPA	41%	144%	94%	99%	103%	91%		87%
EPA (FY25)	2169	1415	942	610	319	80		5535
INVENTORY	899	2033	889	604	327	73		4825
EPA (FY26)	2105	1379	932	595	320	81		5412
% INV to FY26 EPA	41%	144%	94%	99%	103%	91%		89%
INV +WIP / FY25 EPA	43%							88%
INVENTORY	930	31	← E-3 and Below WIP					4856
INV +WIP / FY26 EPA	44%							90%

Sea Shore Flow		
TOUR	SEA	SHORE
1ST	56	36
2ND	60	36
3RD	48	36
4TH	48	36
5TH	36	36
6TH	36	36
7TH	36	36

FORCE STRUCTURE MANNING TO BA										
PG	SEA	INV	BA	SHORE	INV	BA	SEA + SHORE	TOTAL INV	TOTAL BA	
E1-3	38.8%	704	1815	87.0%	140	161	42.7%	844	1976	
E4	154.1%	1609	1044	105.7%	353	334	142.4%	1962	1378	
E5	121.2%	441	364	78.5%	388	494	96.6%	829	858	
E6	94.4%	303	321	108.8%	283	260	100.9%	586	581	
E7	97.8%	132	135	102.8%	181	176	100.6%	313	311	
E8	76.4%	42	55	120.8%	29	24	89.9%	71	79	
E9										
Total	86.5%	3231	3734	94.8%	1374	1449	88.8%	4605	5183	

Pay Grade		E1-E3	E4	E5	E6	E7	E8	E9
TIS to PG Years	ALL Navy	TIR	2.3	4.0	8.7	14.0	17.9	21.7
	ABH	TIR	2.9	5.6	10.8	15.5	20.1	
TIG to PG Years	ALL Navy	TIR	1.4	1.9	4.7	5.9	5.0	4.7
	ABH	TIR	1.7	2.8	5.2	5.9	5.6	

Zone Info	ZONE A	ZONE B	ZONE C	ZONE D	ZONE E	ALL ZONES
FY25 Manning:	94.0%	84.0%	81.0%	80.0%	62.0%	88.0%
FYTD RENL Rate	58.3%	54.2%	76.4%	98.7%	37.7%	61.7%

NOTES

- Current manning is **87%** of current EPA: **UNDERMANNED RATING**
- CONVERT IN: Quotas for certain YG (s) 2016, 2018, 2021 & 2022.
- CONVERT OUT – Rating conversions will only be considered on a case-by-case basis.
- Applicants for PACT Designation need to pass Flight Deck Physical.
- ASVAB requirements: VE+AR+MK+AS=173
- \$RB: 0.5 for Zones A, B and C
- \$DIP: E-8 \$700
- ABH3 Sailors on their first enlistment may qualify for advancement to E5 via the STAR program with assignment to UIC 63093.
- Limited RC2AC quotas available.
- HYT Waivers: Per NAVADMIN 277/23: HYT waivers are being granted w/ orders. If outside of orders still require a 1306 request.***
- *For more info, contact your ECM at chad.t.goff.mil@us.navy.mil