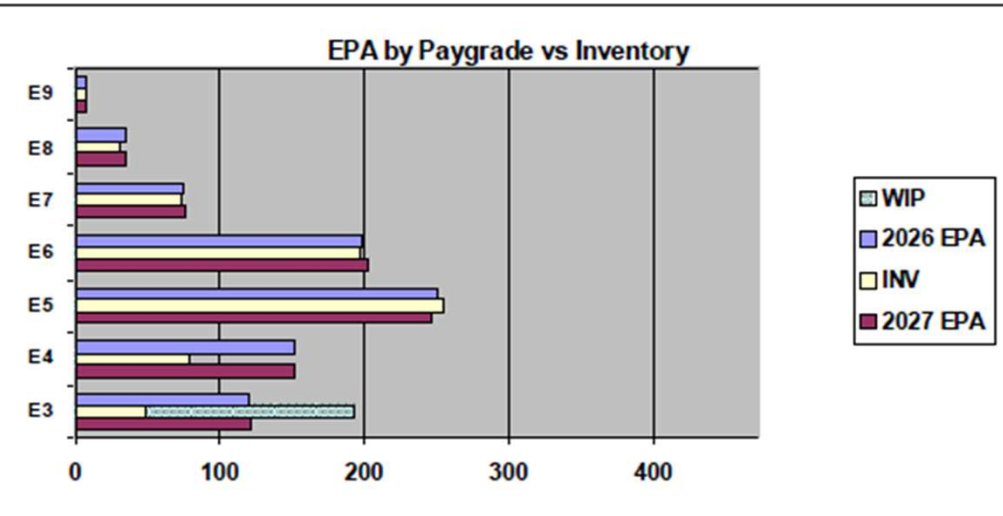
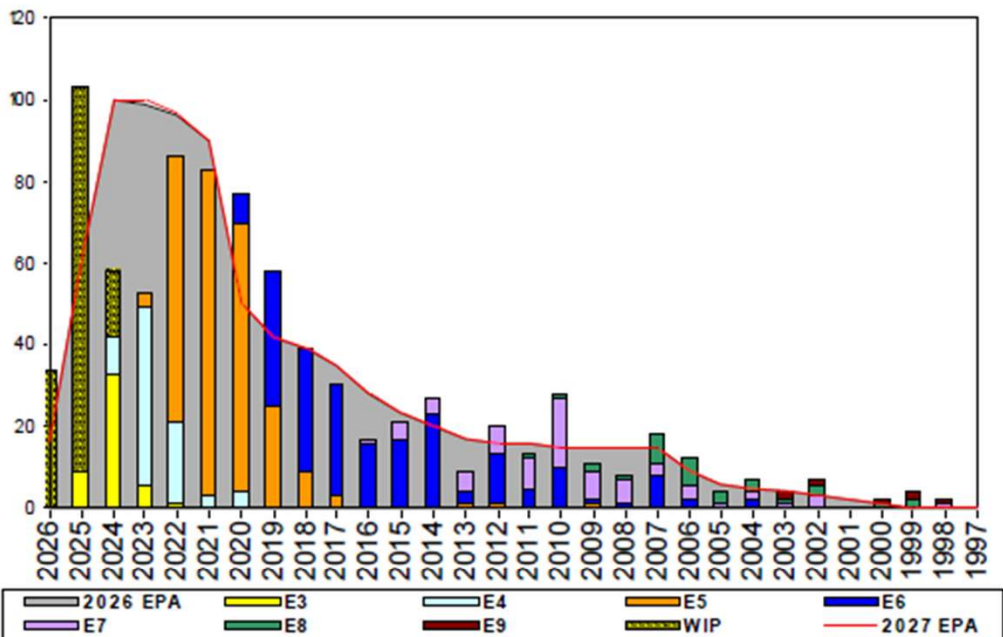


# Aircrewman (Tactical Helicopter) - A505



	E1-3	E4	E5	E6	E7	E8	E9	TOTAL
% INV to FY26 EPA	41%	52%	102%	99%	97%	89%	88%	82%
EPA (FY26)	119	152	250	199	75	35	8	838
INVENTORY	49	79	255	197	73	31	7	691
EPA (FY27)	121	152	246	203	76	34	8	840
% INV to FY27 EPA	40%	52%	104%	97%	96%	91%	88%	82%
INV +WIP / FY26 EPA	162%							100%
INVENTORY	193	144 ← E-3 and Below WIP						835
INV +WIP / FY26 EPA	160%							99%

Sea Shore Flow		
TOUR	SEA	SHORE
1ST	48	36
2ND	36	36
3RD	36	36
4TH	36	36
5TH	36	36
6TH	36	36
7TH	36	36

FORCE STRUCTURE MANNING TO BA												
PG	SEA	INV	BA	SHORE	INV	BA	SEA + SHORE	TOTAL INV	TOTAL BA			
E1-3	#Div/0!	1					#Div/0!	1				
E4	66.4%	75	113				66.4%	75	113			
E5	161.9%	204	126	38.3%	36	94	109.1%	240	220			
E6	68.0%	70	103	136.7%	108	79	97.8%	178	182			
E7	103.0%	34	33	100.0%	37	37	101.4%	71	70			
E8	94.4%	17	18	92.9%	13	14	93.8%	30	32			
E9	0.0%		2	116.7%	7	6	87.5%	7	8			
<b>Total</b>	<b>101.5%</b>	<b>401</b>	<b>395</b>	<b>87.4%</b>	<b>201</b>	<b>230</b>	<b>96.3%</b>	<b>602</b>	<b>625</b>			

TIS to PG Years	Pay Grade	E1-E3	E4	E5	E6	E7	E8	E9
TIS to PG Years	ALL Navy	TIS	2.2	4.0	8.7	13.8	17.8	21.8
	AWR	TIS	2.3	3.5	7.4	13.9	18.0	22.1
	ALL Navy	TIG	1.3	1.8	4.6	5.7	5.0	4.7
TIG to PG Years	AWR	TIG	1.7	1.3	3.7	5.7	3.4	3.4

Zone Info	ZONE A	ZONE B	ZONE C	ZONE D	ZONE E	ALL ZONES
FY26 Manning:	71.0%	95.0%	88.0%	103.0%	110.0%	82.0%
FYTD RENL Rate:	69.0%	69.2%	100.0%	100.0%	40.0%	74.6%

## NOTES

- Manning currently at 82% to FY26 EPA
  - Convert In: **Open (Targeting YG-20 – 24)**
  - Convert Out: Conversions will be considered on a case-by-case basis
  - HYT Waiver: Per NAVADMIN 277/23
  - ASVAB Waivers and Age Waivers will be considered
  - Submit Aircrew Package IAW MILPERSMAN 1220-010 with Physical Screening Test (PST) to ECM via MNCC
  - Members that non-volunteer from flying duty will be force converted per MILPERSMAN 1440-010.
- Contact your ECM at 901-874-2074 if you have any questions or concerns.