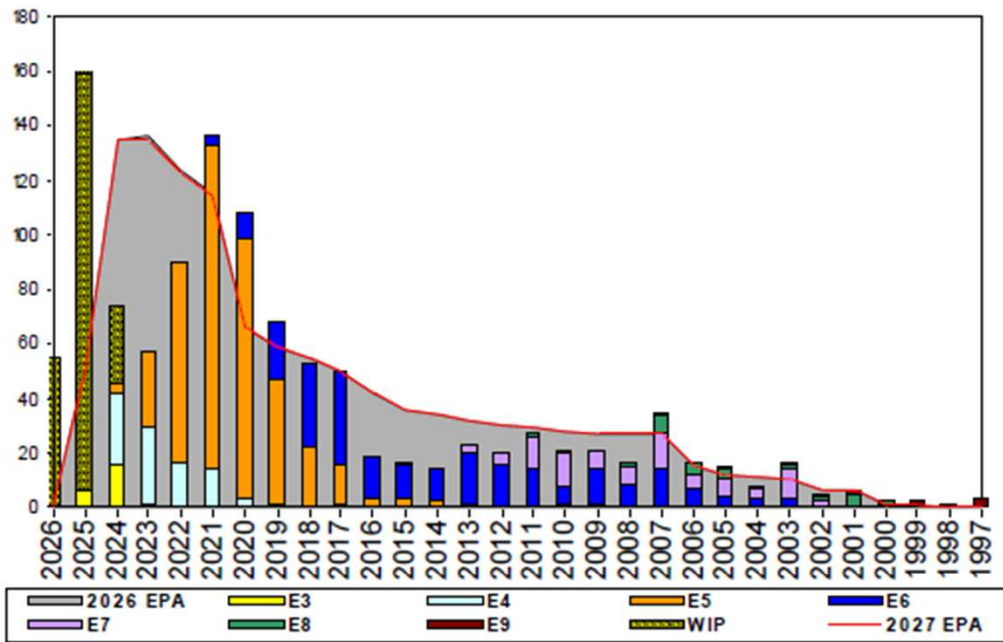


Aircrewman (Helicopter) - A510



Sea Shore Flow

TOUR	SEA	SHORE
1ST	51	36
2ND	36	36
3RD	36	36
4TH	36	36
5TH	36	36
6TH	36	36
7TH	36	36

FORCE STRUCTURE MANNING TO BA

PG	SEA	INV	BA	SHORE	INV	BA	SEA + SHORE	TOTAL INV	TOTAL BA
E1-3	#Div/0!	3		0.0%		3	100.0%	3	3
E4	36.8%	75	204	133.3%	4	3	38.2%	79	207
E5	140.5%	309	220	54.9%	79	144	106.6%	388	364
E6	81.9%	95	116	127.0%	141	111	104.0%	236	227
E7	107.1%	45	42	65.5%	38	58	83.0%	83	100
E8	81.8%	18	22	75.0%	12	16	78.9%	30	38
E9	50.0%	2	4	80.0%	8	10	71.4%	10	14
Total	90.0%	547	608	81.7%	282	345	87.0%	829	953

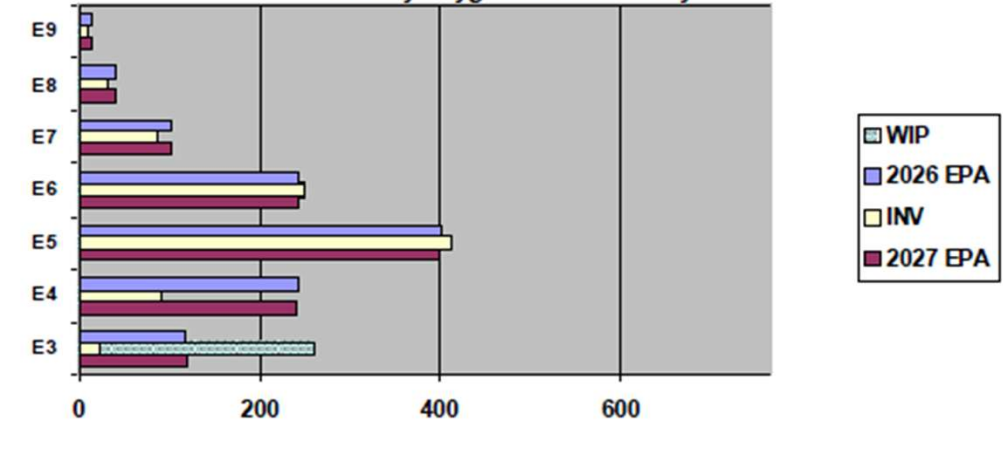
TIS to PG Years

Pay Grade	E1-E3	E4	E5	E6	E7	E8	E9
ALL Navy	TIS	2.2	4.0	8.7	13.8	17.8	21.8
AWS	TIS	1.8	3.9	9.0	15.7	18.9	22.2
ALL Navy	TIG	1.3	1.8	4.6	5.7	5.0	4.7
AWS	TIG	1.2	2.1	5.4	6.2	4.5	3.7

TIG to PG Years

Pay Grade	E1-E3	E4	E5	E6	E7	E8	E9
ALL Navy	TIS	2.2	4.0	8.7	13.8	17.8	21.8
AWS	TIS	1.8	3.9	9.0	15.7	18.9	22.2
ALL Navy	TIG	1.3	1.8	4.6	5.7	5.0	4.7
AWS	TIG	1.2	2.1	5.4	6.2	4.5	3.7

EPA by Paygrade vs Inventory



Zone Info

	ZONE A	ZONE B	ZONE C	ZONE D	ZONE E	ALL ZONES
FY26 Manning:	72.0%	96.0%	52.0%	84.0%	100.0%	77.0%
FYTD RENL Rate:	60.5%	66.7%	50.0%	100.0%	18.2%	58.4%

NOTES

- Manning currently at 77% to FY26 EPA
- Convert In: **Open (Targeting YG 22-24)**
- Convert Out: Rating conversions will be considered on a case-by-case basis.
- HYT Waiver: Per NAVADMIN 277/23
- ASVAB Waivers and Age Waivers will be considered
- Submit Aircrew Package IAW MILPERSMAN 1220-010 with Physical Screening Test (PST) to ECM via MNCC
- Members that non-volunteer from flying duty will be force converted per MILPERSMAN 1440-010.
- Contact your ECM at 901-874-2074 if you have any questions or concerns.

	E1-3	E4	E5	E6	E7	E8	E9	TOTAL
% INV to FY26 EPA	19%	37%	102%	102%	84%	80%	71%	77%
EPA (FY26)	118	243	403	244	104	40	14	1166
INVENTORY	23	90	412	248	87	32	10	902
EPA (FY27)	120	241	399	245	103	40	14	1162
% INV to FY27 EPA	19%	37%	103%	101%	84%	80%	71%	78%
INV +WIP / FY26 EPA	220%							98%
INVENTORY	260	237	← E-3 and Below WIP					1139
INV +WIP / FY26 EPA	217%							98%