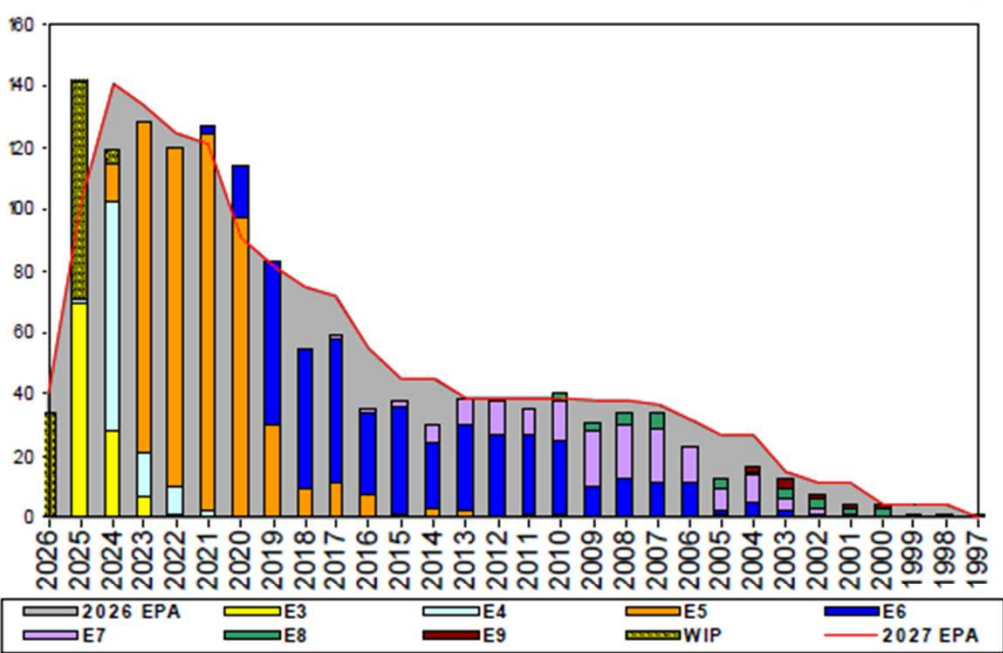


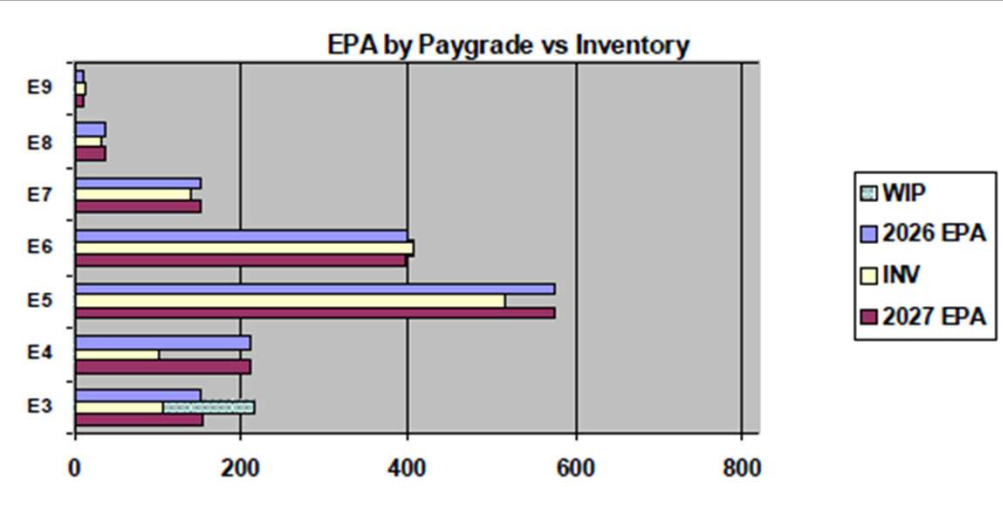
# Aircrewman (Operator) - A520



Sea Shore Flow		
TOUR	SEA	SHORE
1ST	48	36
2ND	36	36
3RD	36	36
4TH	36	36
5TH	36	36
6TH	36	36
7TH	36	36

FORCE STRUCTURE MANNING TO BA												
PG	SEA	INV	BA	SHORE	INV	BA	SEA + SHORE	TOTAL INV	TOTAL BA			
E1-3	#Div/0!	7		#Div/0!	5		#Div/0!	12				
E4	47.4%	82	173	20.0%	1	5	46.6%	83	178			
E5	131.1%	392	299	38.8%	90	232	90.8%	482	531			
E6	70.7%	147	208	133.1%	225	169	98.7%	372	377			
E7	84.1%	69	82	100.0%	59	59	90.8%	128	141			
E8	87.5%	14	16	85.0%	17	20	86.1%	31	36			
E9	0.0%		1	120.0%	12	10	109.1%	12	11			
<b>Total</b>	<b>91.3%</b>	<b>711</b>	<b>779</b>	<b>82.6%</b>	<b>409</b>	<b>495</b>	<b>87.9%</b>	<b>1120</b>	<b>1274</b>			

TIS to PG Years	Pay Grade	E1-E3	E4	E5	E6	E7	E8	E9
	ALL Navy	TIS	2.2	4.0	8.7	13.8	17.8	21.8
	AWO	TIS	1.8	2.9	8.2	14.9	18.7	22.5
TIG to PG Years	ALL Navy	TIG	1.3	1.8	4.6	5.7	5.0	4.7
	AWO	TIG	1.2	1.4	4.8	6.3	5.0	4.8



Zone Info	ZONE A	ZONE B	ZONE C	ZONE D	ZONE E	ALL ZONES
FY26 Manning:	95.0%	79.0%	80.0%	91.0%	50.0%	86.0%
FYTD RENL Rate:	78.0%	72.0%	62.5%	94.4%	22.2%	69.1%

## NOTES

Manning currently at 86% to FY26 EPA

- Convert In: **Open**
- Convert Out: Rating conversions will be considered on a case-by-case basis.
- HYT Waiver: Per NAVADMIN 277/23
- Members that non-volunteer from flying duty will be force converted per MILPERSMAN 1440-011.

Contact your ECM at 901-874-2074 if you have any questions or concerns.

	E1-3	E4	E5	E6	E7	E8	E9	TOTAL	
% INV to FY26 EPA	70%	48%	90%	102%	93%	84%	109%	86%	
EPA (FY26)	151	211	575	398	149	37	11	1532	
INVENTORY	106	101	516	406	139	31	12	1311	
EPA (FY27)	154	210	574	396	149	37	11	1531	
% INV to FY27 EPA	69%	48%	90%	103%	93%	84%	109%	86%	
INV +WIP / FY26 EPA	142%							93%	
INVENTORY	215	109	← E-3 and Below WIP						1420
INV +WIP / FY26 EPA	140%							93%	