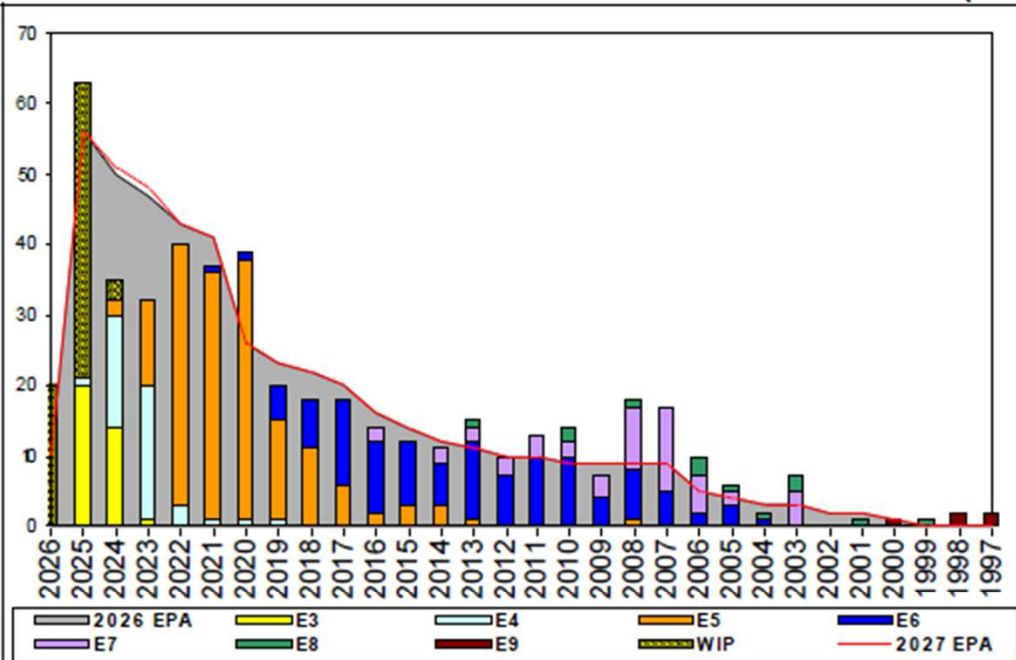


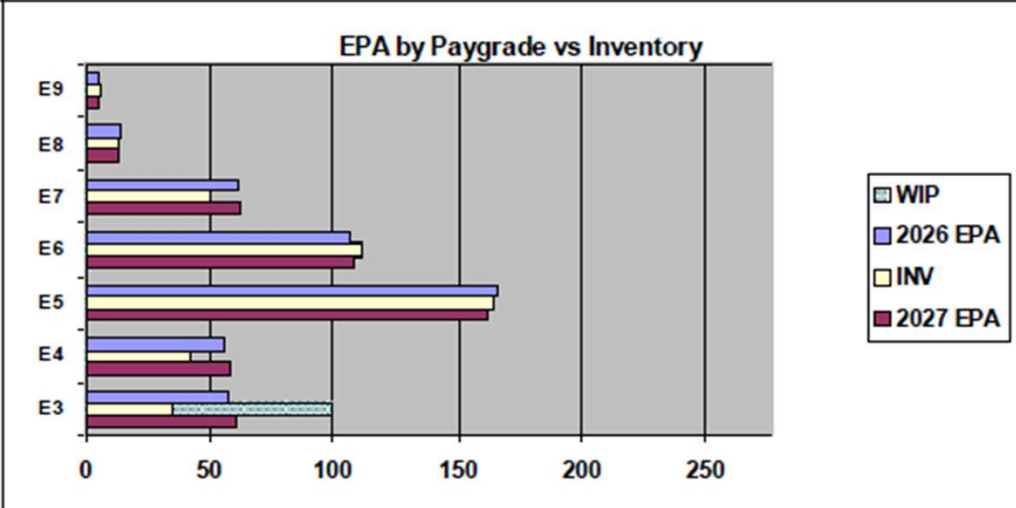
Aircrewman (Mechanical) - A530



TOUR	SEA	SHORE
1ST	54	36
2ND	36	36
3RD	36	36
4TH	36	36
5TH	36	36
6TH	36	36
7TH	36	36

PG	SEA	INV	BA	SHORE	INV	BA	SEA + SHORE	TOTAL INV	TOTAL BA
E1-3	#Div/0!	5		#Div/0!	5		#Div/0!	10	
E4	94.3%	33	35	6.7%	1	15	68.0%	34	50
E5	118.3%	110	93	63.3%	38	60	96.7%	148	153
E6	79.7%	47	59	131.7%	54	41	101.0%	101	100
E7	105.9%	18	17	75.0%	30	40	84.2%	48	57
E8	100.0%	8	8	83.3%	5	6	92.9%	13	14
E9	100.0%	1	1	166.7%	5	3	150.0%	6	4
Total	104.2%	222	213	83.6%	138	165	95.2%	360	378

Pay Grade	E1-E3	E4	E5	E6	E7	E8	E9
ALL Navy	TIS	2.2	4.0	8.7	13.8	17.8	21.8
AWF	TIS	2.1	3.0	8.8	14.9	18.3	25.0
ALL Navy	TIG	1.3	1.8	4.6	5.7	5.0	4.7
AWF	TIG	1.3	1.3	5.3	5.7	4.5	4.8



	ZONE A	ZONE B	ZONE C	ZONE D	ZONE E	ALL ZONES
FY26 Manning:	79.0%	79.0%	96.0%	138.0%	135.0%	90.0%
FYTD RENL Rate:	83.3%	87.5%	100.0%	100.0%		75.0%

NOTES

- Manning currently at 90% to FY25 EPA
- Convert In: **Open**
- Convert Out: Rating conversions will be considered on a case-by-case basis.
- HYT Waiver: Per NAVADMIN 277/23
- No ASVAB Waivers and No Age Waivers
- If interested in E-6B Flight Engineer Program contact ECM
- Submit Aircrew Package IAW MILPERSMAN 1220-010 to ECM
- Members that non-volunteer from flying duty will be force converted per MILPERSMAN 1440-010.
- Contact your ECM at 901-874-2074 if you have any questions or concerns.

	E1-3	E4	E5	E6	E7	E8	E9	TOTAL
% INV to FY26 EPA	60%	75%	99%	104%	82%	93%	120%	90%
EPA (FY26)	58	56	166	107	61	14	5	467
INVENTORY	35	42	164	111	50	13	6	421
EPA (FY27)	60	59	162	108	62	13	5	469
% INV to FY27 EPA	58%	71%	101%	103%	81%	100%	120%	90%
INV +WIP / FY26 EPA	172%							104%
INVENTORY	100	65 ← E-3 and Below WIP						486
INV +WIP / FY26 EPA	167%							104%