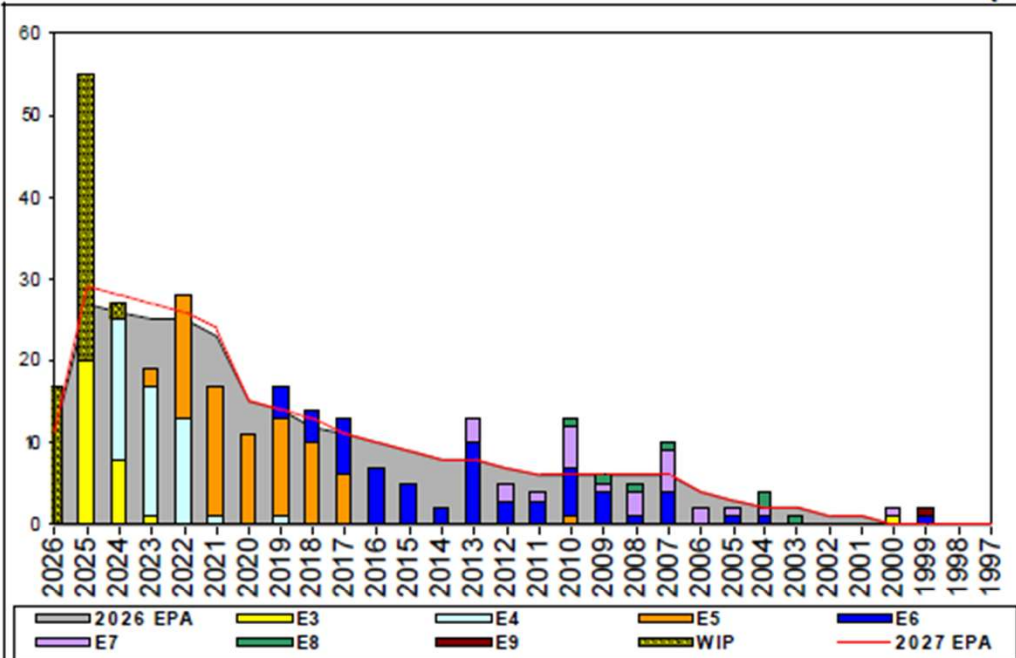


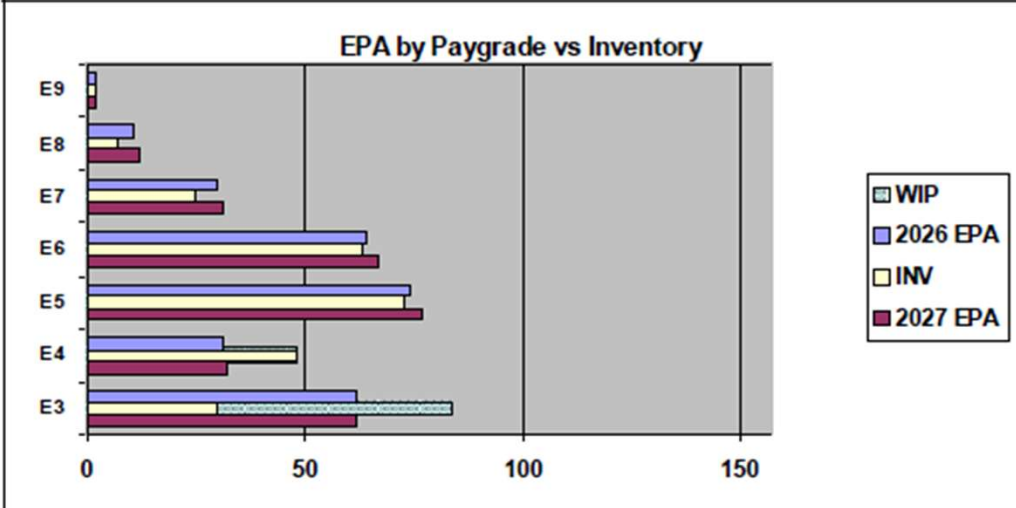
Aircrewman (Avionics) - A550



Sea Shore Flow		
TOUR	SEA	SHORE
1ST	54	36
2ND	36	36
3RD	36	36
4TH	36	36
5TH	36	36
6TH	36	36
7TH	36	36

FORCE STRUCTURE MANNING TO BA											
PG	SEA	INV	BA	SHORE	INV	BA	SEA + SHORE	TOTAL INV	TOTAL BA		
E1-3											
E4	128.6%	36	28				128.6%	36	28		
E5	110.9%	51	46	87.0%	20	23	102.9%	71	69		
E6	85.7%	24	28	112.5%	36	32	100.0%	60	60		
E7	108.3%	13	12	70.6%	12	17	86.2%	25	29		
E8	75.0%	3	4	57.1%	4	7	63.6%	7	11		
E9	100.0%	1	1	100.0%	1	1	100.0%	2	2		
Total	107.6%	128	119	91.3%	73	80	101.0%	201	199		

TIS to PG Years	Pay Grade	E1-E3	E4	E5	E6	E7	E8	E9
TIS	ALL Navy	2.2	4.0	8.7	13.8	17.8	21.8	
	AWV	2.0	3.8	8.7	14.3	16.9	23.0	
TIG	ALL Navy	1.3	1.8	4.6	5.7	5.0	4.7	
	AWV	1.2	1.7	5.2	5.7	5.0	7.0	



Zone Info	ZONE A	ZONE B	ZONE C	ZONE D	ZONE E	ALL ZONES
FY26 Manning:	84.0%	98.0%	80.0%	114.0%	92.0%	91.0%
FYTD RENL Rate:	14.3%	100.0%	100.0%	83.3%	33.3%	59.1%

NOTES

- Manning currently at 91% to FY25 EPA
 - Convert In: **Open**
 - Convert Out: Rating conversions will be considered on a case-by-case basis.
 - HYT Waiver: Per NAVADMIN 277/23
 - Submit Aircrew Package IAW MILPERSMAN 1220-010 to ECM
 - Members that non-volunteer from flying duty will be force converted per MILPERSMAN 1440-010.
- Contact your ECM at 901-874-2074 if you have any questions or concerns.

	E1-3	E4	E5	E6	E7	E8	E9	TOTAL
% INV to FY26 EPA	48%	155%	99%	98%	83%	64%	100%	91%
EPA (FY26)	62	31	74	64	30	11	2	274
INVENTORY	30	48	73	63	25	7	2	248
EPA (FY27)	62	32	77	67	31	12	2	283
% INV to FY27 EPA	48%	150%	95%	94%	81%	58%	100%	88%
INV +WIP / FY26 EPA	135%							110%
INVENTORY	84	54 ← E-3 and Below WIP						302
INV +WIP / FY26 EPA	135%							107%