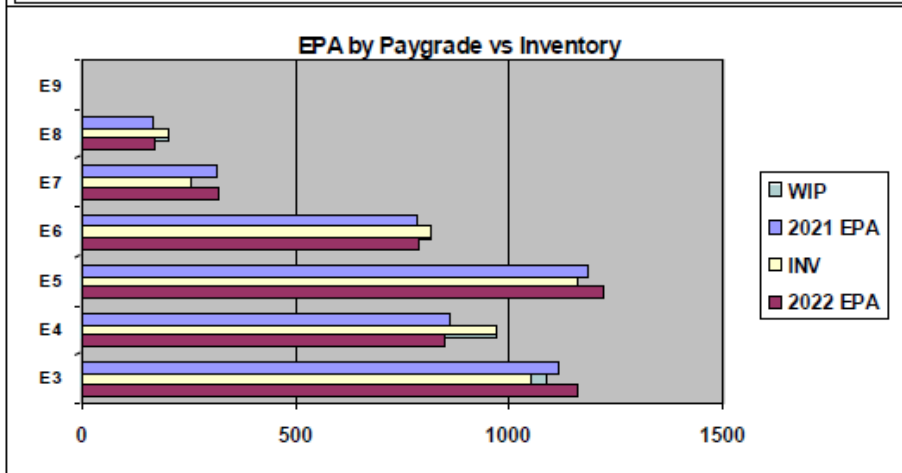
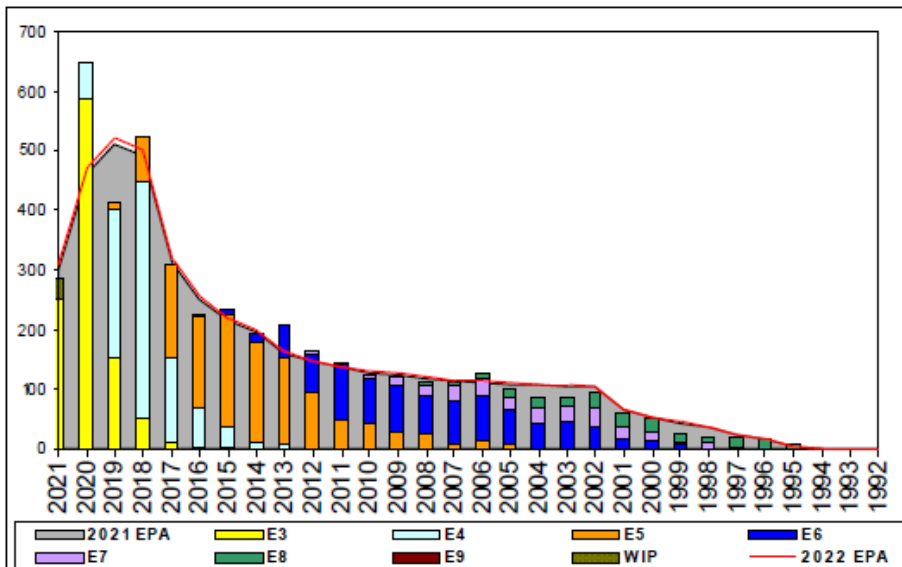


# Aviation Electrician's Mate - A200



	E1-3	E4	E5	E6	E7	E8	E9	TOTAL
% INV to FY21 EPA	94%	113%	98%	104%	83%	121%		101%
EPA (FY21)	1118	864	1184	785	315	167		4433
INVENTORY	1054	973	1162	818	260	202		4469
EPA (FY22)	1164	850	1219	790	323	173		4519
% INV to FY22 EPA	91%	114%	95%	104%	80%	117%		99%
INV +WIP / FY21 EPA	97%							102%
INVENTORY	1090	36 ← E-3 and Below WIP						4505
INV +WIP / FY22 EPA	94%							100%

TOUR	SEA	SHORE
1ST	54	36
2ND	54	36
3RD	36	36
4TH	36	36
5TH	36	36
6TH	36	36
7TH	36	36

PG	SEA	INV	BA	SHORE	INV	BA	SEA + SHORE	TOTAL INV	TOTAL BA
E1-3	88.5%	577	652	121.8%	190	156	94.9%	767	808
E4	121.8%	715	587	71.5%	178	249	106.8%	893	836
E5	92.3%	683	740	98.3%	401	408	94.4%	1084	1148
E6	106.9%	464	434	96.3%	310	322	102.4%	774	756
E7	81.0%	136	168	84.2%	112	133	82.4%	248	301
E8	90.5%	105	116	197.7%	85	43	119.5%	190	159
E9									
<b>Total</b>	<b>99.4%</b>	<b>2680</b>	<b>2697</b>	<b>97.3%</b>	<b>1276</b>	<b>1311</b>	<b>98.7%</b>	<b>3956</b>	<b>4008</b>

All-Navy 10yr Avg	E1-3	E4	E5	E6	E7	E8	E9
TIR		34.9%	22.1%	13.9%	22.0%	11.6%	13.1%
All-Navy	TIR	28.3%	20.8%	8.1%	25.9%	13.6%	12.3%
AE	TIR	48.6%	23.1%	7.2%	18.2%	9.8%	0.0%

	ZONE A	ZONE B	ZONE C	ZONE D	ZONE E	ALL ZONES
FY21 Manning:	104.0%	105.0%	99.0%	93.0%	77.0%	101.0%
FYTD RENL Rate:	69.1%	74.1%	89.2%	98.2%	32.6%	72.3%
FY22 Manning:	102.0%	103.0%	98.0%	91.0%	75.0%	98.9%

## NOTES

**Current Manning at 100% to FY 22 EPA: BALANCED RATING!!!**  
 \$RB: Zone 'A' // .5 Award Level

**ASVAB REQUIREMENTS**  
VE+AR+MK+MC >=217 OR VE+AR+MK+AO >=217

- Convert OUT Opportunity: 2013, 2015
- Convert IN: YG 2019. Convert-IN Sailors must pass flight deck physical. **AE Rating** requires a DONCAF adjudicated security clearance and cannot be waived for rating entry. **This includes PACT Sailors!**
- Contact ECM for convert-IN options regardless of quotas available in CWAY.
- PACT Sailors: **STAY MOTIVATED!!!** Apply for AE Rating via MNA. Contact ECM or PACT ADMIN to discuss opportunity if out of MNA looks!!!

NAVADMIN 307/20 (EETP) questions may be directed to the ECM. Check MyNavyHR website regularly for the most updated list of available rates, ratings, and year groups with opportunity.