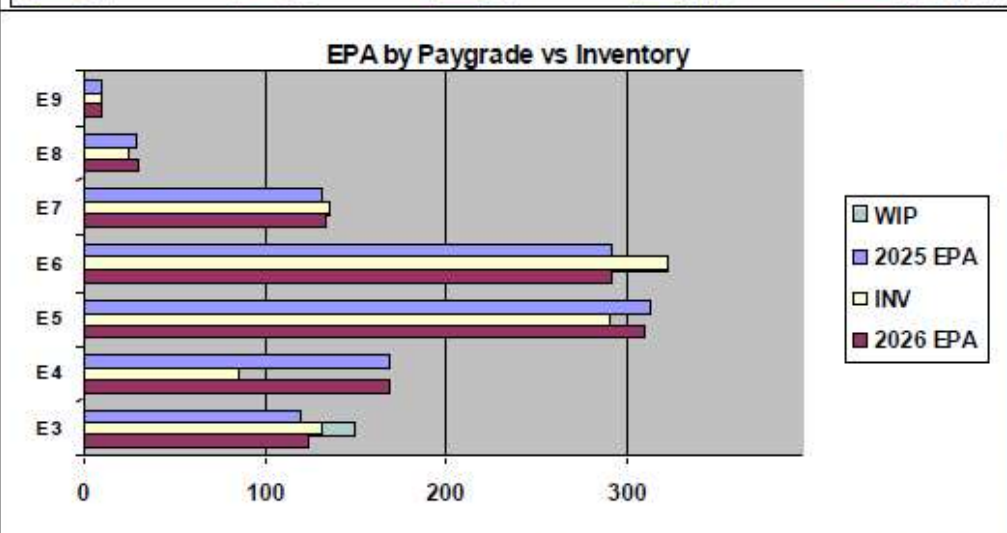
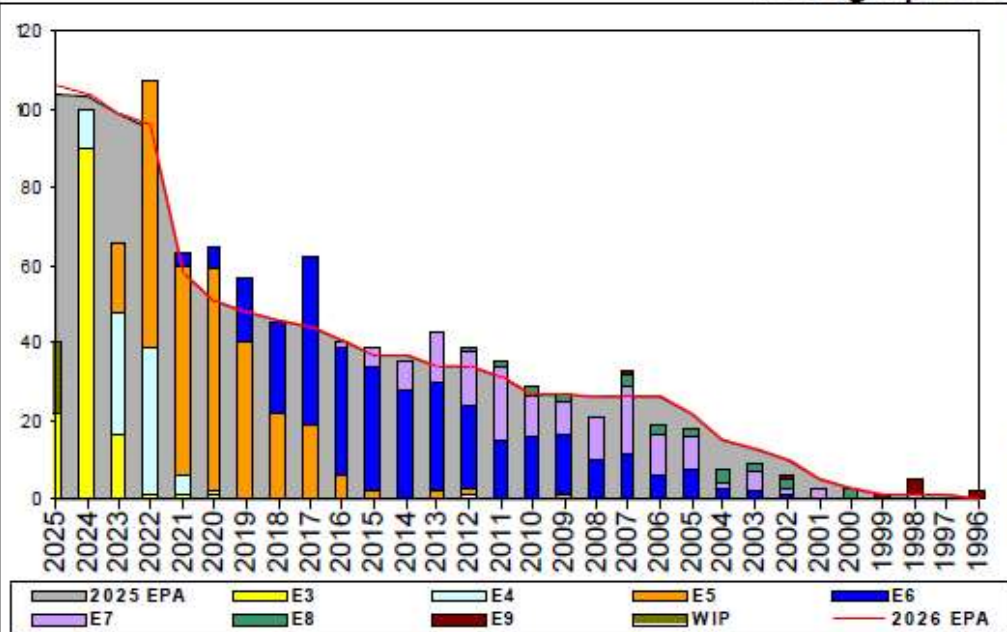


Aerographer's Mate - A410



	E1-3	E4	E5	E6	E7	E8	E9	TOTAL
% INV to FY25 EPA	110%	51%	93%	111%	103%	86%	100%	94%
EPA (FY25)	120	169	313	292	132	29	10	1065
INVENTORY	132	86	291	323	136	25	10	1003
EPA (FY26)	124	169	310	292	134	30	10	1069
% INV to FY26 EPA	110%	51%	93%	111%	103%	86%	100%	94%
INV +WIP / FY25 EPA	125%							96%
INVENTORY	150	18	← E-3 and Below WIP					1021
INV +WIP / FY26 EPA	121%							96%

Sea Shore Flow

TOUR	SEA	SHORE
1ST	36	36
2ND	36	36
3RD	36	36
4TH	36	36
5TH	36	36
6TH	36	36
7TH	36	36

FORCE STRUCTURE MANNING TO BA

PG	SEA	INV	BA	SHORE	INV	BA	SEA + SHORE	TOTAL INV	TOTAL BA
E1-3	133.3%	76	57	200.0%	16	8	141.5%	92	65
E4	52.7%	59	112	60.0%	24	40	54.6%	83	152
E5	90.6%	135	149	100.0%	120	120	94.8%	255	269
E6	114.5%	134	117	99.4%	167	168	105.6%	301	285
E7	92.2%	59	64	109.1%	72	66	100.8%	131	130
E8	88.9%	8	9	89.5%	17	19	89.3%	25	28
E9	100.0%	2	2	100.0%	8	8	100.0%	10	10
Total	92.7%	473	510	98.8%	424	429	95.5%	897	939

ADV OPP. (Cycles 261/262/264)

Pay Grade	E1-3	E4	E5	E6	E7	E8	E9
All-Navy	TIR	TIR	18.54	10.62%	31.44%	21.60%	22.32%
AG	TIR	51.6%	100.0%	41.2%	12.5%	7.0%	40.0%

Zone Info

	ZONE A	ZONE B	ZONE C	ZONE D	ZONE E	ALL ZONES
FY25 Manning:	87.0%	111.0%	113.0%	94.0%	63.0%	94.0%
FYTD RENL Rate:	65.2%	75.0%	78.6%	100.0%	50.0%	73.6%
FY26 Manning:	87.0%	111.0%	113.0%	94.0%	63.0%	93.8%

NOTES

Current manning is **94%** of current EPA: **UNDERMANNED RATING**

- AG3 C School graduates who meet all requirements may qualify for advancement to E5 via the STAR program.
- \$RB – 1.5 for Zone A Sailors w/ J00A NEC. Max of \$45k
- \$RB – 3.0 for Zone B Sailors w/ J00A NEC. Max of \$60k
- CONVERT IN: Limited quotas for YG 2021 & 2023
- This is an "A" school and security clearance required rating.
- ASVAB requirements: VE+MK+GS = 162 or AR+MK+GS = 165
- SELRES Opportunity for the J00A NEC if departing Active Duty.
- Limited RC2AC quotas available in CWAY w/ J00A NEC.
- ***HYT Waiver: If not in conjunction w/ orders - requires ECM approval via 1306 request.***
- Rating conversions will be considered on a case-by-case basis