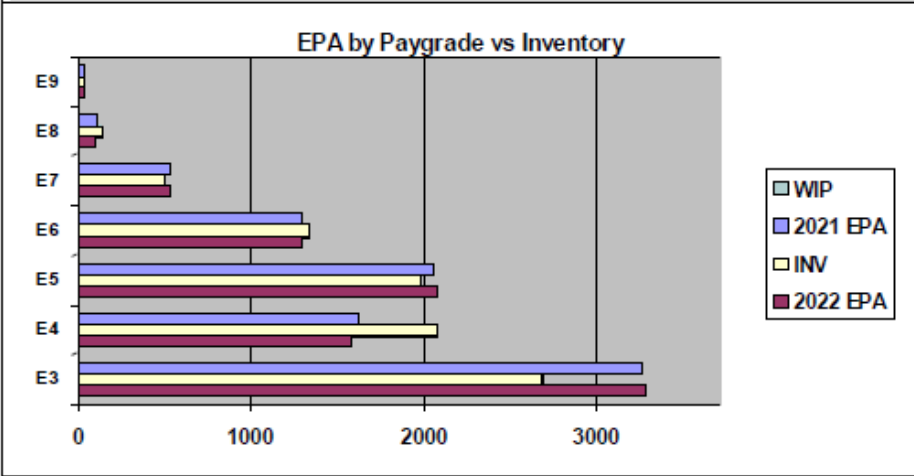
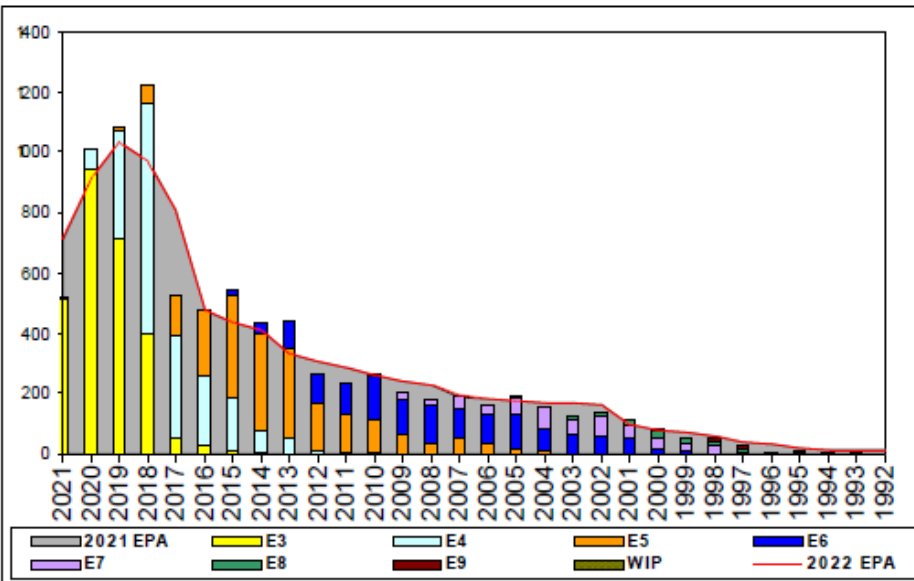


Aviation Ordnanceman - A420



	E1-3	E4	E5	E6	E7	E8	E9	TOTAL
% INV to FY21 EPA	82%	128%	96%	103%	95%	119%	111%	98%
EPA (FY21)	3256	1622	2060	1288	526	112	35	8899
INVENTORY	2679	2081	1979	1330	500	133	39	8741
EPA (FY22)	3280	1587	2081	1292	535	106	35	8916
% INV to FY22 EPA	82%	131%	95%	103%	93%	125%	111%	98%
INV +WIP / FY21 EPA	82%							98%
INVENTORY	2685	6 ← E-3 and Below WIP						8747
INV +WIP / FY22 EPA	82%							98%

Sea Shore Flow			FORCE STRUCTURE MANNING TO BA									
TOUR	SEA	SHORE	PG	SEA	INV	BA	SHORE	INV	BA	SEA + SHORE	TOTAL INV	TOTAL BA
15T	55	36	E1-3	77.5%	2012	2596	51.0%	132	259	75.1%	2144	2855
2ND	60	36	E4	124.0%	1524	1229	119.9%	404	337	123.1%	1928	1566
3RD	48	36	E5	76.4%	847	1109	110.0%	982	893	91.4%	1829	2002
4TH	48	36	E6	92.9%	748	805	110.6%	490	443	99.2%	1238	1248
5TH	36	36	E7	91.8%	245	267	88.8%	214	241	90.4%	459	508
6TH	36	36	E8	103.1%	67	65	131.0%	55	42	114.0%	122	107
7TH	36	36	E9	81.8%	18	22	158.3%	19	12	108.8%	37	34
			Total	89.6%	5461	6093	103.1%	2296	2227	93.2%	7757	8320

ADV OPP. (Cycles 245/246/247)							
All-Navy 10yr Avg	E1-3	E4	E5	E6	E7	E8	E9
	TIR	34.9%	22.1%	13.9%	22.0%	11.6%	13.1%
All-Navy	TIR	28.3%	20.8%	8.1%	25.9%	13.6%	12.3%
AO	TIR	26.9%	18.2%	7.1%	19.9%	11.9%	20.0%

Zone Info	ZONE A	ZONE B	ZONE C	ZONE D	ZONE E	ALL ZONES
FY21 Manning:	101.0%	107.0%	89.0%	91.0%	74.0%	98.0%
FYTD RENL Rate:	66.8%	65.4%	87.8%	93.9%	34.6%	69.3%
FY22 Manning:	101.0%	107.0%	89.0%	91.0%	74.0%	98.0%

NOTES

Manning currently at 98% to FY22 EPA
 BALANCED RATING
 \$RB / 1.0 award level / Zone 'C'

- Convert IN: YG 2017 (E3 and below, E5)
- Convert OUT: NONE
- ASVAB requirements: VE+AR+MK+AS=185 OR MK+AS+AO=140
- PACT SAILORS: Continue to apply for the AO Rating via MNA. Contact ECM or PACT ADMIN if out of MNA looks. **Security clearance is required for this rating and can NOT be waived.**

Data Source: NMPBS(Inv)/NRMS(RE Rate)/N12(EPA/SSF)/BUPERS3(Adv Op) As of Date: 06-Aug-21