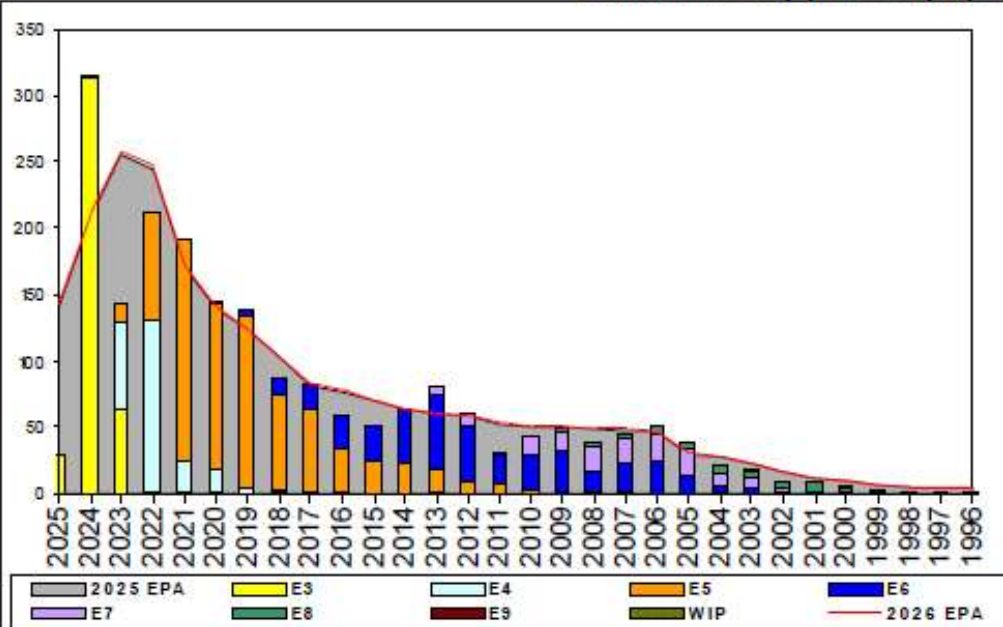


Aviation Support Equipment Technician - A430

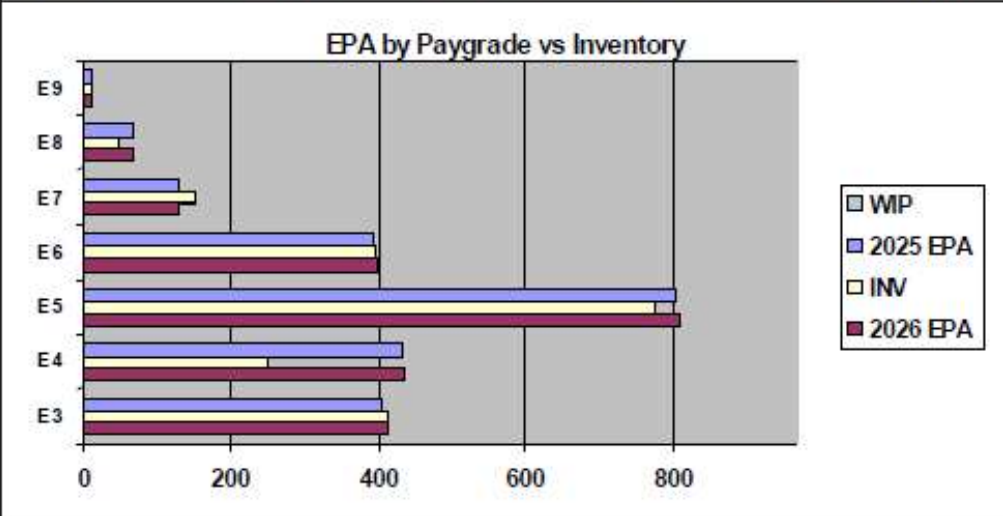


TOUR	SEA	SHORE
1ST	36	36
2ND	48	36
3RD	36	48
4TH	36	36
5TH	36	36
6TH	36	36
7TH	36	36

FORCE STRUCTURE MANNING TO BA											
PG	SEA	INV	BA	SHORE	INV	BA	SEA + SHORE	TOTAL INV	TOTAL BA		
E1-3	77.4%	164	212	36.1%	30	83	65.8%	194	295		
E4	59.1%	156	264	48.3%	70	145	55.3%	226	409		
E5	82.6%	337	408	106.7%	383	359	93.9%	720	767		
E6	92.7%	166	179	107.8%	208	193	100.5%	374	372		
E7	90.5%	57	63	140.0%	84	60	114.6%	141	123		
E8	56.1%	23	41	95.8%	23	24	70.8%	46	65		
E9	0.0%		1	114.3%	8	7	100.0%	8	8		
Total	77.3%	903	1168	92.5%	806	871	83.8%	1709	2039		

ADV OPP. (Cycles 261/262/264)

Pay Grade	E1-3	E4	E5	E6	E7	E8	E9
All-Navy	TIR	TIR	18.54	10.62%	31.44%	21.60%	22.32%
AS	TIR	49.2%	100.0%	14.3%	25.0%	68.0%	27.8%



Zone Info	ZONE A	ZONE B	ZONE C	ZONE D	ZONE E	ALL ZONES
FY25 Manning:	98.0%	83.0%	94.0%	89.0%	61.0%	91.0%
FYTD RENL Rate:	78.7%	56.8%	88.2%	100.0%	41.2%	73.3%
FY26 Manning:	97.0%	82.0%	94.0%	88.0%	60.0%	90.3%

NOTES

UNDERMANNED RATING

Current manning **91%** to FY25 EPA
SRB: Zone A: 1.5 \$45K; Zone B: 1.0 \$30K

Convert IN: Quotas loaded in MNA
Convert OUT: Conversions will be considered on a case-by-case basis

HYT Waiver: Approving HYT waivers IAW NAVADMIN 277/23

PACT Sailors: STAY MOTIVATED!!! The AS Rating is **HIRING!!!** Apply for the AS Rating via MNA. Contact ECM or PACT ADMIN to discuss opportunity if out of MNA looks!!!
- Must be able to pass a flight deck physical

Contact your ECM ACCS Young at jennifer.l.young188.mil@us.navy.mil if you have any questions or concerns.

	E1-3	E4	E5	E6	E7	E8	E9	TOTAL
% INV to FY25 EPA	102%	57%	96%	101%	119%	69%	100%	91%
EPA (FY25)	402	432	802	391	128	67	8	2230
INVENTORY	412	247	773	395	152	46	8	2033
EPA (FY26)	411	435	808	396	128	66	8	2252
% INV to FY26 EPA	102%	57%	96%	101%	119%	69%	100%	90%
INV +WIP / FY25 EPA								
INVENTORY			← E-3 and Below WIP					
INV +WIP / FY26 EPA								