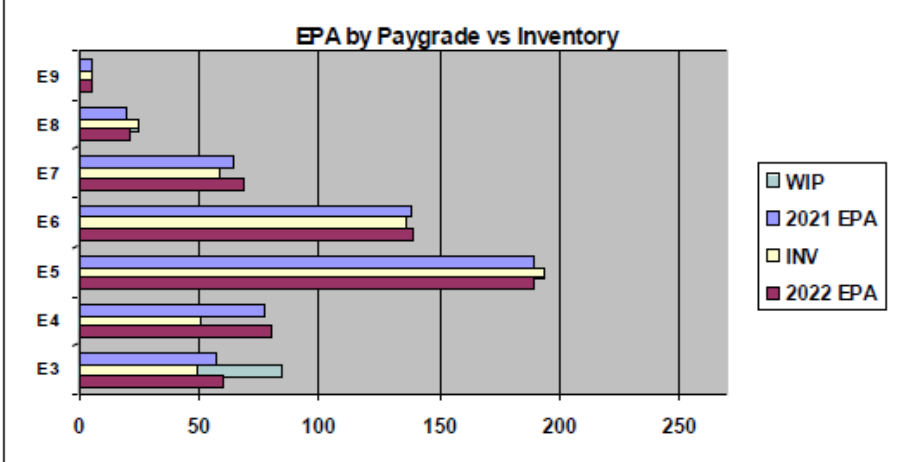
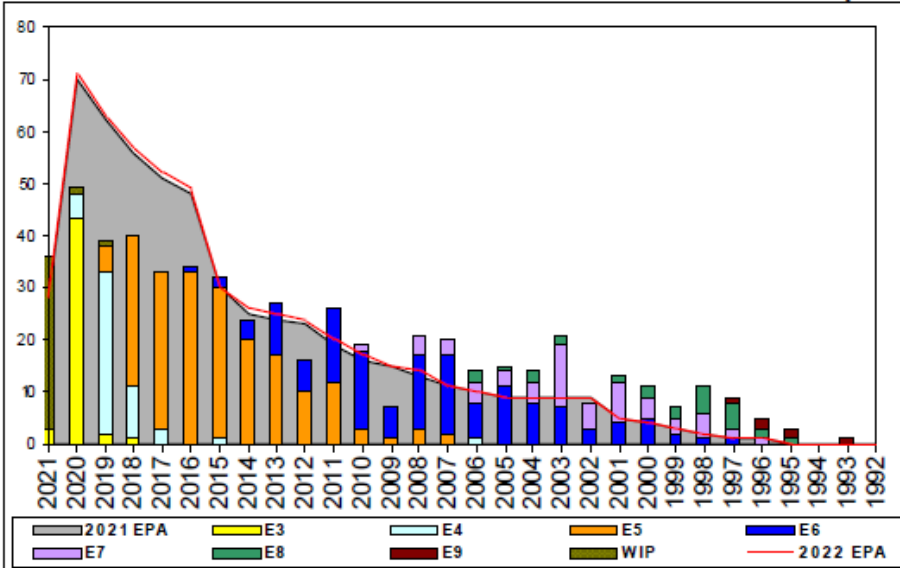


# Aircrewman (Mechanical) - A530



	E1-3	E4	E5	E6	E7	E8	E9	TOTAL
% INV to FY21 EPA	86%	66%	102%	99%	92%	125%	100%	94%
EPA (FY21)	57	77	190	138	64	20	6	552
INVENTORY	49	51	194	136	59	25	6	520
EPA (FY22)	60	80	190	139	68	21	6	564
% INV to FY22 EPA	82%	64%	102%	98%	87%	119%	100%	92%
INV + WIP / FY21 EPA	147%							101%
INVENTORY	84	35 ← E-3 and Below WIP						555
INV + WIP / FY22 EPA	140%							98%

Sea Shore Flow			FORCE STRUCTURE MANNING TO BA									
TOUR	SEA	SHORE	PG	SEA	INV	BA	SHORE	INV	BA	SEA + SHORE	TOTAL INV	TOTAL BA
1ST	54	36	E1-3	0.0%	1		0.0%	1		#Div/0!	2	
2ND	36	36	E4	76.9%	40	52	35.3%	6	17	66.7%	46	69
3RD	36	36	E5	112.0%	112	100	81.0%	64	79	98.3%	176	179
4TH	36	36	E6	89.7%	61	68	108.6%	63	58	98.4%	124	126
5TH	36	36	E7	127.8%	23	18	76.7%	33	43	91.8%	56	61
6TH	36	36	E8	88.9%	8	9	177.8%	16	9	133.3%	24	18
7TH	36	36	E9	0.0%	1		80.0%	4	5	100.0%	5	5
<b>Total</b>				99.6%	246	247	88.6%	187	211	94.5%	433	458

ADV OPP. (Cycles 245/246/247)							
All-Navy 10yr Avg	E1-3	E4	E5	E6	E7	E8	E9
TIR		34.9%	22.1%	13.9%	22.0%	11.6%	13.1%
All-Navy	TIR	28.3%	20.8%	8.1%	25.9%	13.6%	12.3%
AWF	TIR	100.0%	75.0%	10.4%	17.5%	18.4%	28.6%

Zone Info	ZONE A	ZONE B	ZONE C	ZONE D	ZONE E	ALL ZONES
FY21 Manning:	64.0%	95.0%	114.0%	160.0%	362.0%	94.0%
FYTD RENL Rate:	66.7%	64.7%	33.3%	85.7%	37.5%	61.0%
FY22 Manning:	63.0%	92.0%	109.0%	160.0%	362.0%	92.2%

## NOTES

Rate is currently manned at 94% FY21 and 92% of FY22 Enlisted Programmed Authorizations.

- No convert out, No ASVAB Waivers and No Age Waivers
- No school seats, convert in only for prior AWFs**
- E-5 interested in E-6B Flight Engineer Program contact AWRCs McGarrigle at 901-874-2074
- Aircrew package must be submitted to ECM IAW MILPERSMAN 1220-010
- Members that non-volunteer from flying duty will be force converted per MILPERSMAN 1440-010.