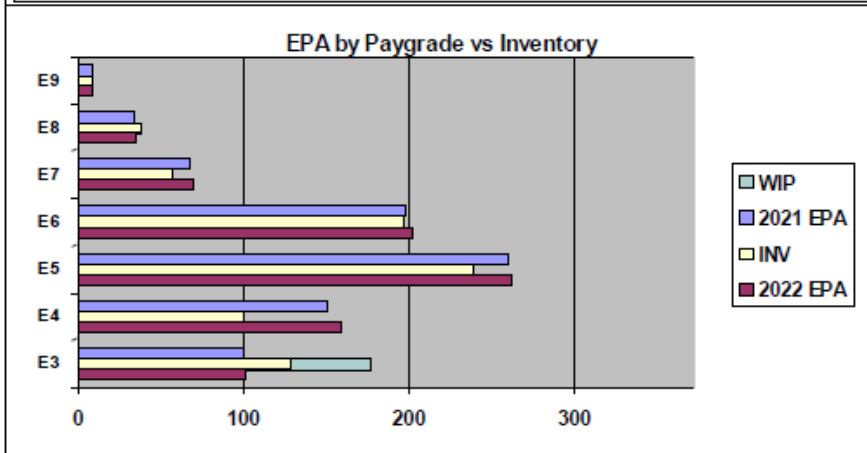
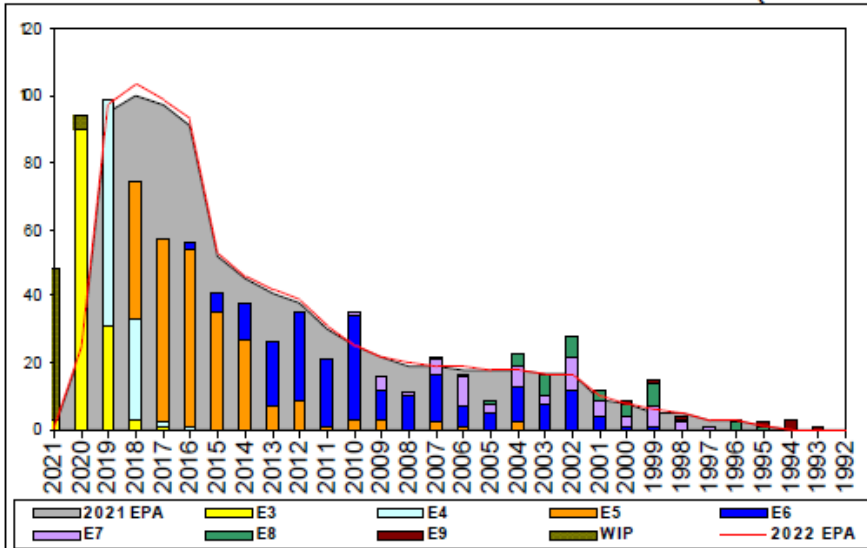


Aircrewman (Tactical Helicopter) - A505



	E1-3	E4	E5	E6	E7	E8	E9	TOTAL
% INV to FY21 EPA	128%	66%	92%	99%	84%	112%	100%	94%
EPA (FY21)	100	151	260	198	68	34	9	820
INVENTORY	128	100	239	197	57	38	9	768
EPA (FY22)	101	160	262	202	70	35	9	839
% INV to FY22 EPA	127%	63%	91%	98%	81%	109%	100%	92%
INV +WIP / FY21 EPA	177%							100%
INVENTORY	177	49 ← E-3 and Below WIP						817
INV +WIP / FY22 EPA	175%							97%

Sea Shore Flow

TOUR	SEA	SHORE
1ST	48	36
2ND	36	36
3RD	36	36
4TH	36	36
5TH	36	36
6TH	36	36
7TH	36	36

FORCE STRUCTURE MANNING TO BA

TOUR	SEA	INV	BA	SHORE	INV	BA	SEA + SHORE	TOTAL INV	TOTAL BA
E1-3	0.0%	1		0.0%			#Div/0!	1	
E4	63.8%	67	105				63.8%	67	105
E5	122.1%	182	149	49.5%	45	91	94.6%	227	240
E6	70.4%	76	108	127.6%	97	76	94.0%	173	184
E7	72.7%	16	22	97.4%	38	39	88.5%	54	61
E8	118.8%	19	16	135.7%	19	14	126.7%	38	30
E9	150.0%	3	2	85.7%	6	7	100.0%	9	9
Total	90.5%	364	402	90.3%	205	227	90.5%	569	629

ADV OPP. (Cycles 245/246/247)

All-Navy 10yr Avg	E1-3	E4	E5	E6	E7	E8	E9
TIR		34.9%	22.1%	13.9%	22.0%	11.6%	13.1%
All-Navy	TIR	28.3%	20.8%	8.1%	25.9%	13.6%	12.3%
AWR	TIR	100.0%	100.0%	9.7%	22.7%	34.6%	22.2%

Zone Info

	ZONE A	ZONE B	ZONE C	ZONE D	ZONE E	ALL ZONES
FY21 Manning:	94.0%	78.0%	91.0%	108.0%	135.0%	94.0%
FYTD RENL Rate:	68.1%	61.3%	63.6%	100.0%	20.0%	62.9%
FY22 Manning:	91.0%	77.0%	89.0%	107.0%	128.0%	91.5%

NOTES

Rate is currently manned at 94% FY21 and 92% FY22 Enlisted Programmed Authorizations.

- No convert out, No ASVAB Waivers and No Age Waivers
- Convert in is limited due to school seats
- Submit Aircrew Package IAW MILPERSMAN 1220-010 with Physical Screening Test (PST) to AWRCs Brian McGarrigle (ECM)
- Members that non-volunteer from flying duty will be force converted per MILPERSMAN 1440-010.