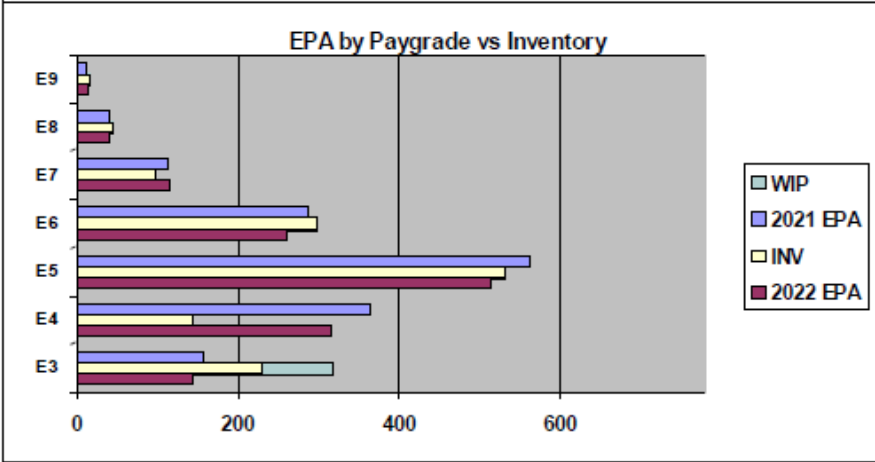
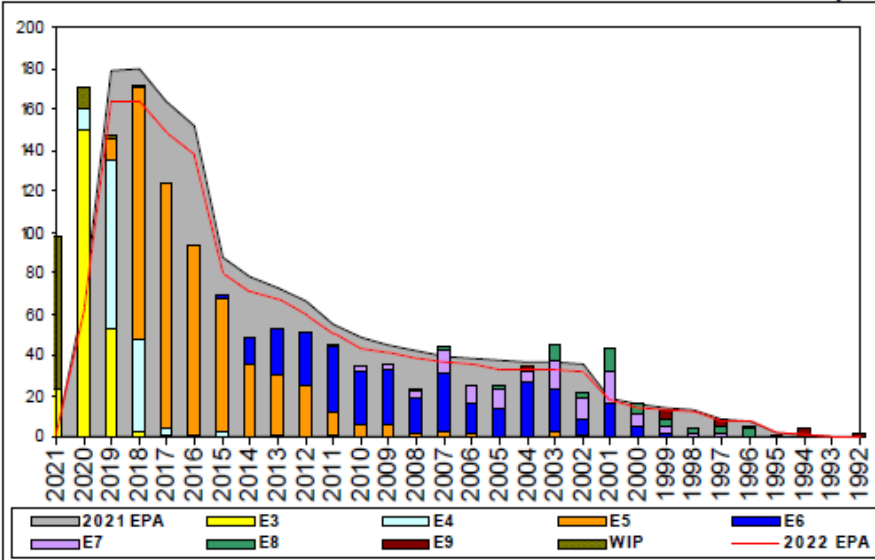


Aircrewman (Helicopter) - A510



Sea Shore Flow		
TOUR	SEA	SHORE
1ST	51	36
2ND	36	36
3RD	36	36
4TH	36	36
5TH	36	36
6TH	36	36
7TH	36	36

FORCE STRUCTURE MANNING TO BA										
PG	SEA	INV	BA	SHORE	INV	BA	SEA + SHORE	TOTAL INV	TOTAL BA	
E1-3	0.0%	2		33.3%	1	3	100.0%	3	3	
E4	39.8%	121	304	25.0%	1	4	39.6%	122	308	
E5	120.8%	412	341	45.1%	87	193	93.4%	499	534	
E6	77.2%	132	171	140.4%	146	104	101.1%	278	275	
E7	91.8%	45	49	75.0%	45	60	82.6%	90	109	
E8	80.0%	20	25	133.3%	20	15	100.0%	40	40	
E9	0.0%	3		118.2%	13	11	145.5%	16	11	
Total	82.6%	735	890	80.3%	313	390	81.9%	1048	1280	

ADV OPP. (Cycles 245/246/247)							
All-Navy 10yr Avg	E1-3	E4	E5	E6	E7	E8	E9
TIR		34.9%	22.1%	13.9%	22.0%	11.6%	13.1%
All-Navy	TIR	28.3%	20.8%	8.1%	25.9%	13.6%	12.3%
AWS	TIR	100.0%	53.8%	4.4%	29.2%	23.2%	5.0%

Zone Info	ZONE A	ZONE B	ZONE C	ZONE D	ZONE E	ALL ZONES
FY21 Manning:	98.0%	74.0%	70.0%	87.0%	106.0%	89.0%
FYTD RENL Rate:	65.3%	81.8%	83.3%	100.0%	25.0%	71.6%
FY22 Manning:	108.0%	81.0%	77.0%	95.0%	115.0%	97.1%

NOTES

Rate is currently manned at 89% FY21 and 97% FY22 Enlisted Programmed Authorizations (EPA).

- No convert out, No ASVAB Waivers and No Age Waivers
- Convert in is limited due to school seats
- Submit Aircrew Package IAW MILPERSMAN 1220-010 with Physical Screening Test (PST) to AWRCS Brian McGarrigle (ECM)
- Members that non-volunteer from flying duty will be force converted per MILPERSMAN 1440-010.

	E1-3	E4	E5	E6	E7	E8	E9	TOTAL
% INV to FY21 EPA	145%	39%	94%	104%	86%	110%	155%	89%
EPA (FY21)	159	365	564	287	112	40	11	1538
INVENTORY	231	144	532	299	96	44	17	1363
EPA (FY22)	143	316	514	262	115	40	13	1403
% INV to FY22 EPA	162%	46%	104%	114%	83%	110%	131%	97%
INV +WIP / FY21 EPA	201%							94%
INVENTORY	319	88	← E-3 and Below WIP					1451
INV +WIP / FY22 EPA	223%							103%