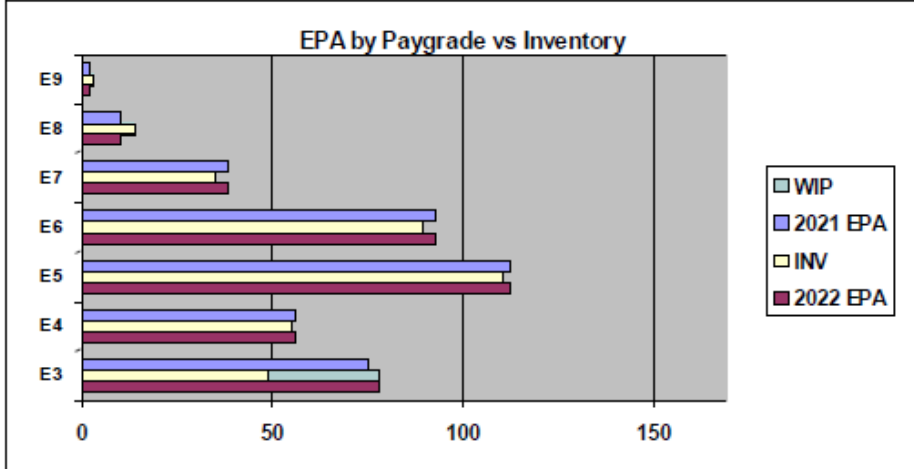
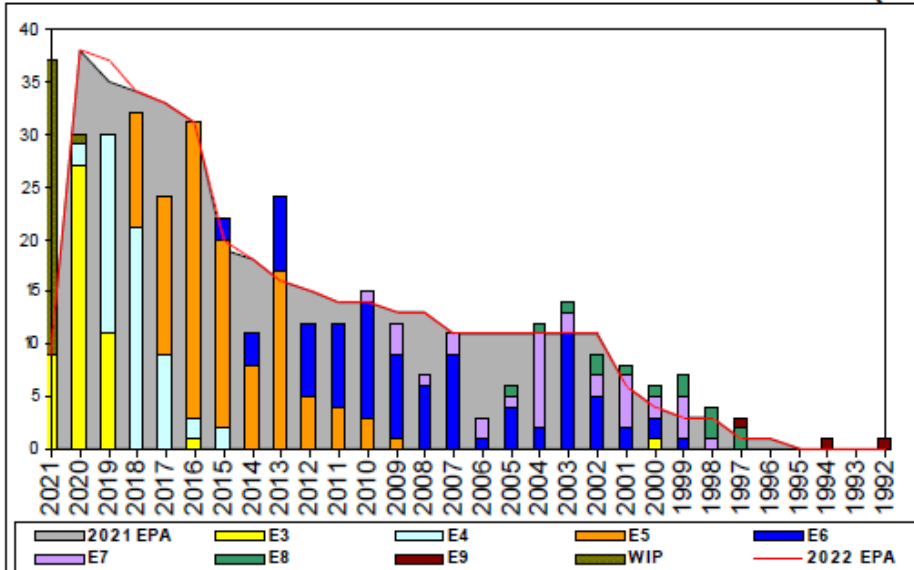


# Aircrewman (Avionics) - A550



	E1-3	E4	E5	E6	E7	E8	E9	TOTAL
% INV to FY21 EPA	65%	98%	98%	96%	92%	140%	150%	92%
EPA (FY21)	75	56	112	93	38	10	2	386
INVENTORY	49	55	110	89	35	14	3	355
EPA (FY22)	78	56	112	93	38	10	2	389
% INV to FY22 EPA	63%	98%	98%	96%	92%	140%	150%	91%
INV +WIP / FY21 EPA	104%							99%
INVENTORY	78	29 ← E-3 and Below WIP						384
INV +WIP / FY22 EPA	100%							99%

TOUR	SEA	SHORE
1ST	54	36
2ND	36	36
3RD	36	36
4TH	36	36
5TH	36	36
6TH	36	36
7TH	36	36

PG	SEA	INV	BA	SHORE	INV	BA	SEA + SHORE	TOTAL INV	TOTAL BA
E1-3									
E4	104.3%	49	47	200.0%	4	2	108.2%	53	49
E5	106.2%	69	65	75.0%	30	40	94.3%	99	105
E6	73.3%	33	45	121.4%	51	42	96.6%	84	87
E7	163.6%	18	11	68.0%	17	25	97.2%	35	36
E8	120.0%	6	5	160.0%	8	5	140.0%	14	10
E9	50.0%	1	2	0.0%	1		100.0%	2	2
<b>Total</b>	<b>100.6%</b>	<b>176</b>	<b>175</b>	<b>97.4%</b>	<b>111</b>	<b>114</b>	<b>99.3%</b>	<b>287</b>	<b>289</b>

	E1-3	E4	E5	E6	E7	E8	E9
All-Navy 10yr Avg	TIR	34.9%	22.1%	13.9%	22.0%	11.6%	13.1%
All-Navy	TIR	28.3%	20.8%	8.1%	25.9%	13.6%	12.3%
AWW	TIR	100.0%	40.7%	12.4%	12.1%	8.7%	0.0%

	ZONE A	ZONE B	ZONE C	ZONE D	ZONE E	ALL ZONES
FY21 Manning:	89.0%	97.0%	83.0%	88.0%	144.0%	92.0%
FYTD RENL Rate:	68.4%	81.3%	77.8%	100.0%	22.2%	70.0%
FY22 Manning:	88.0%	96.0%	83.0%	88.0%	144.0%	91.3%

## NOTES

Rate is currently manned at 92% FY21 and 91% FY22 Enlisted Programmed Authorizations.

-No convert out

-Members that non-volunteer from flying duty will be force converted per MILPERSMAN 1440-010.