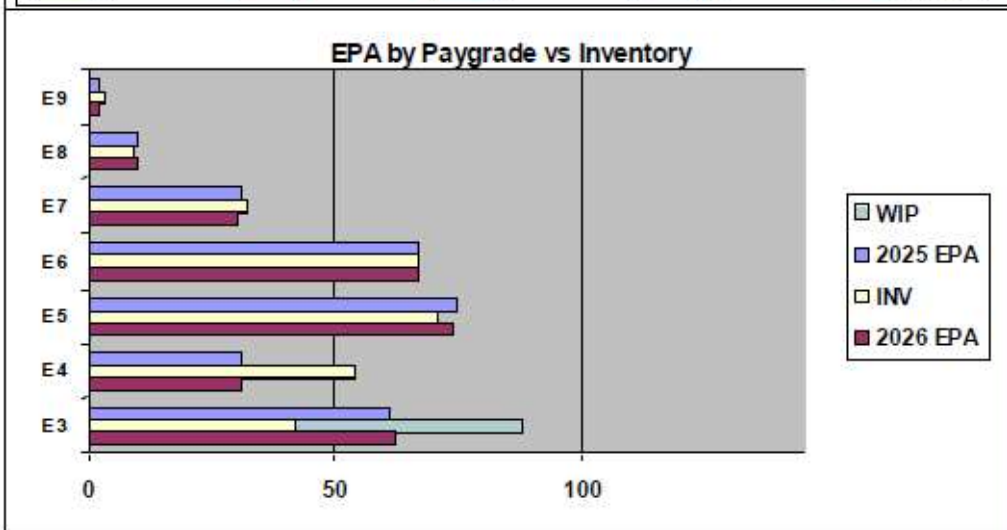
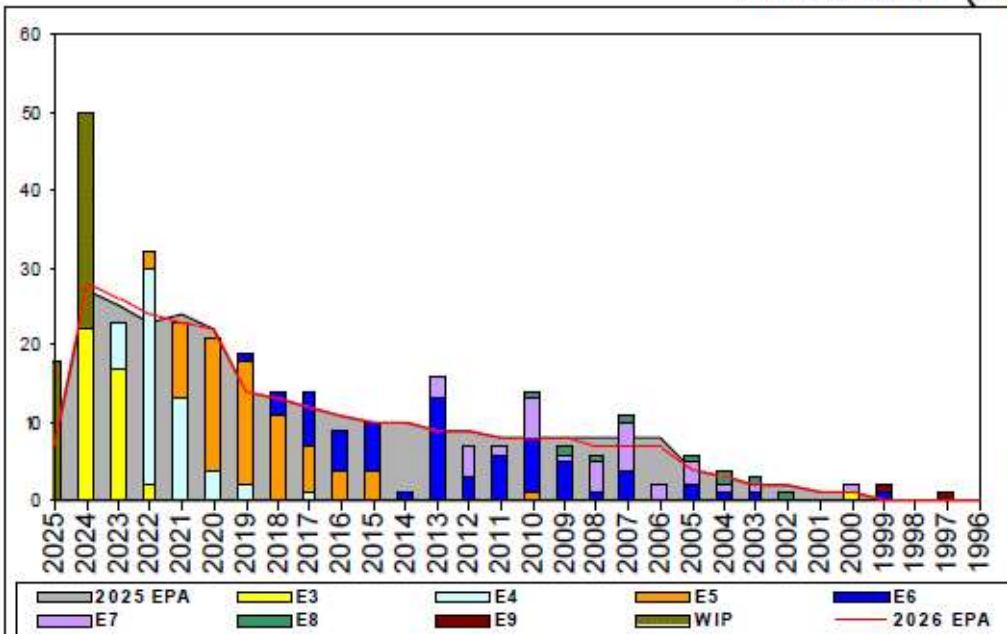


Aircrewman (Avionics) - A550



	E1-3	E4	E5	E6	E7	E8	E9	TOTAL
% INV to FY25 EPA	69%	174%	95%	100%	103%	90%	150%	100%
EPA (FY25)	61	31	75	67	31	10	2	277
INVENTORY	42	54	71	67	32	9	3	278
EPA (FY26)	62	31	74	67	30	10	2	276
% INV to FY26 EPA	69%	174%	95%	100%	103%	90%	150%	101%
INV + WIP / FY25 EPA	144%							117%
INVENTORY	88	46	← E-3 and Below WIP					324
INV + WIP / FY26 EPA	142%							117%

Sea Shore Flow

TOUR	SEA	SHORE
1ST	54	36
2ND	36	36
3RD	36	36
4TH	36	36
5TH	36	36
6TH	36	36
7TH	36	36

FORCE STRUCTURE MANNING TO BA

PG	SEA	INV	BA	SHORE	INV	BA	SEA + SHORE	TOTAL INV	TOTAL BA
E1-3									
E4	175.0%	49	28	#Div/0!	2		182.1%	51	28
E5	93.5%	43	46	76.0%	19	25	87.3%	62	71
E6	86.2%	25	29	102.9%	35	34	95.2%	60	63
E7	116.7%	14	12	77.8%	14	18	93.3%	28	30
E8	100.0%	4	4	83.3%	5	6	90.0%	9	10
E9	100.0%	1	1	200.0%	2	1	150.0%	3	2
Total	113.3%	136	120	91.7%	77	84	104.4%	213	204

ADV OPP. (Cycles 261/262/264)

Pay Grade	E1-3	E4	E5	E6	E7	E8	E9
All-Navy	TIR	TIR	18.54	10.62%	31.44%	21.60%	22.32%
AWV	TIR	100.0%	2.9%	17.2%	26.7%	50.0%	100.0%

Zone Info

	ZONE A	ZONE B	ZONE C	ZONE D	ZONE E	ALL ZONES
FY25 Manning:	102.0%	110.0%	76.0%	100.0%	123.0%	100.0%
FYTD RENL Rate:	66.7%	100.0%	75.0%	100.0%	25.0%	76.0%
FY26 Manning:	100.0%	110.0%	76.0%	107.0%	123.0%	100.7%

NOTES

Manning currently at 100% to FY25 EPA

- Convert In: **Open to PACT Sailors**
- Convert Out: Rating conversions will be considered on a case-by-case basis.
- HYT Waiver: Per NAVADMIN 277/23
- Submit Aircrew Package IAW MILPERSMAN 1220-010 to ECM
- Members that non-volunteer from flying duty will be force converted per MILPERSMAN 1440-010.

Contact your ECM at 901-874-2074 if you have any questions or concerns.