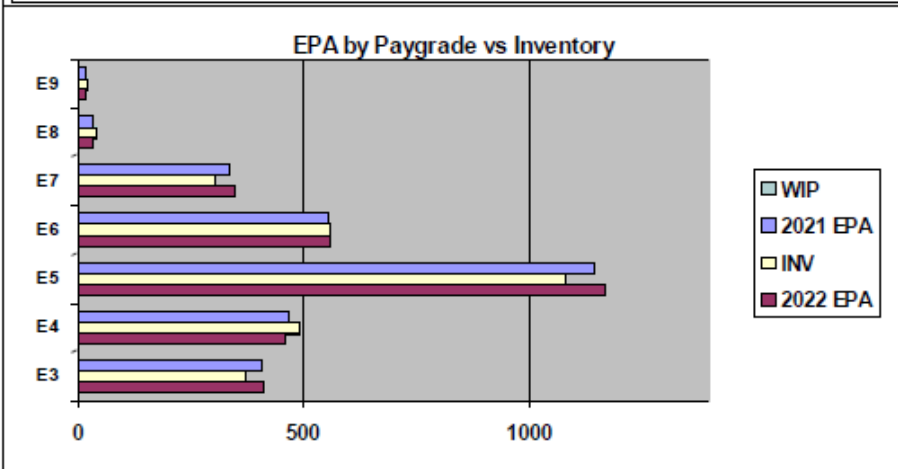
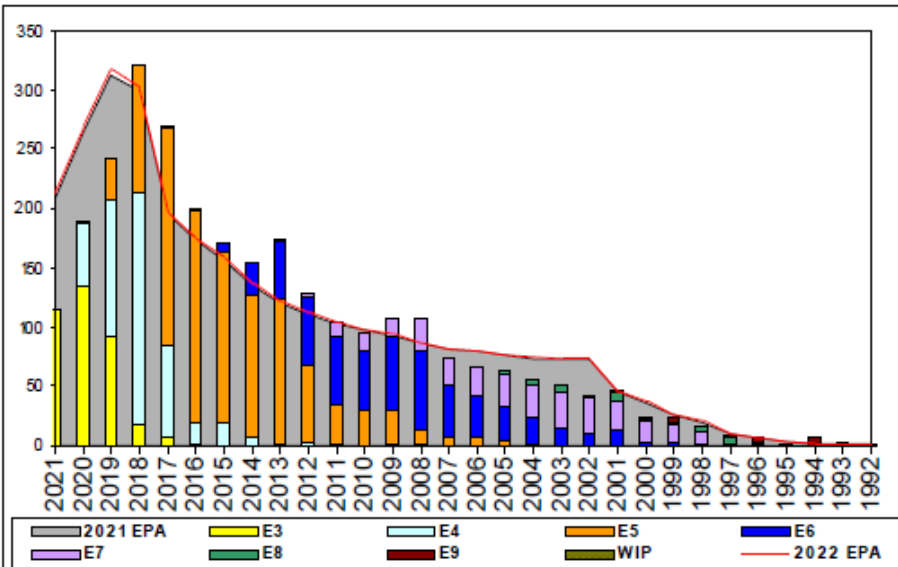


Aviation Maintenance Administrationman - A440



	E1-3	E4	E5	E6	E7	E8	E9	TOTAL
% INV to FY21 EPA	91%	104%	94%	101%	90%	123%	128%	97%
EPA (FY21)	409	469	1145	552	335	35	18	2963
INVENTORY	371	490	1081	560	303	43	23	2871
EPA (FY22)	413	461	1168	556	349	32	18	2997
% INV to FY22 EPA	90%	106%	93%	101%	87%	134%	128%	96%
INV +WIP / FY21 EPA								
INVENTORY			← E-3 and Below WIP					
INV +WIP / FY22 EPA								

Sea Shore Flow			FORCE STRUCTURE MANNING TO BA									
TOUR	SEA	SHORE	PG	SEA	INV	BA	SHORE	INV	BA	SEA + SHORE	TOTAL INV	TOTAL BA
1ST	55	36	E1-3	73.3%	187	255	118.8%	95	80	84.2%	282	335
2ND	48	36	E4	101.2%	339	335	105.9%	125	118	102.4%	464	453
3RD	42	36	E5	80.5%	595	739	112.5%	423	376	91.3%	1018	1115
4TH	36	36	E6	90.1%	282	313	113.0%	252	223	99.6%	534	536
5TH	36	36	E7	77.3%	153	198	99.2%	130	131	86.0%	283	329
6TH	36	36	E8	175.0%	21	12	90.9%	20	22	120.6%	41	34
7TH	36	36	E9	137.5%	11	8	122.2%	11	9	129.4%	22	17
			Total	85.4%	1588	1860	110.1%	1056	959	93.8%	2644	2819

ADV OPP. (Cycles 245/246/247)							
All-Navy 10yr Avg	E1-3	E4	E5	E6	E7	E8	E9
	TIR	34.9%	22.1%	13.9%	22.0%	11.6%	13.1%
All-Navy	TIR	28.3%	20.8%	8.1%	25.9%	13.6%	12.3%
AZ	TIR	65.1%	37.8%	7.2%	35.3%	9.8%	50.0%

Zone Info	ZONE A	ZONE B	ZONE C	ZONE D	ZONE E	ALL ZONES
FY21 Manning:	93.0%	119.0%	111.0%	77.0%	83.0%	97.0%
FYTD RENL Rate:	71.7%	70.9%	88.5%	100.0%	37.5%	74.8%
FY22 Manning:	92.0%	118.0%	109.0%	76.0%	82.0%	95.8%

NOTES

Currently Manned at 96% to FY 22 EPA
!!!UNDERMANNED RATING!!!

- Convert IN: YG 2019, 2020 (E5 & Below)
- Convert OUT: NONE

ASVAB requirements: VE+AR=102

PACT SAILORS: THE AZ RATING IS HIRING!!! Continue to apply for the AZ Rating via MNA. Submit 1306 request to ECM if out of MNA looks.

- Security clearance is required for this rating and can NOT be waived.
- ENSURE PACT SAILORS ARE FULLY QUALIFIED (INCLUDING SECURITY CLEARANCE) BEFORE APPLYING FOR AZ RATING!!!!