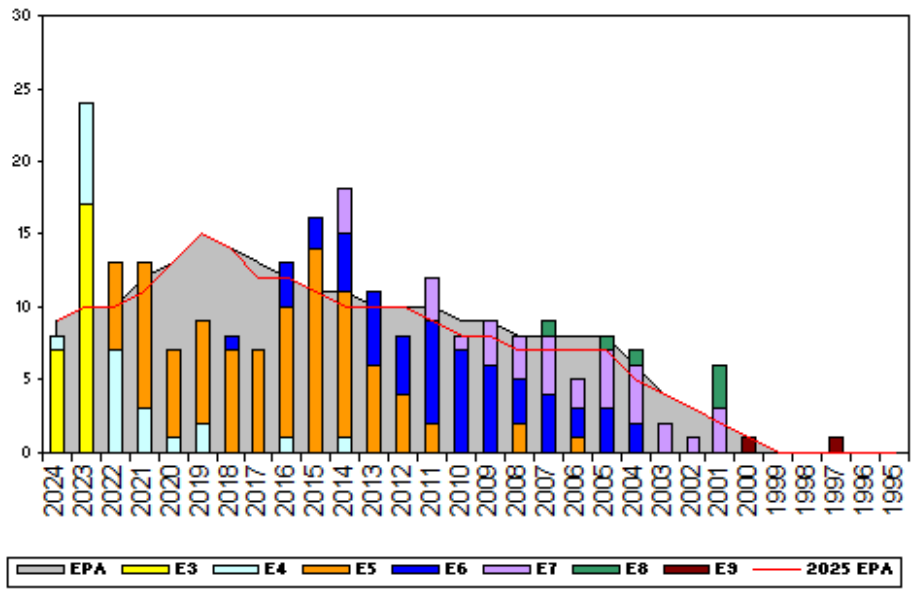


Aviation Maintenance Administrationman, TAR - J170

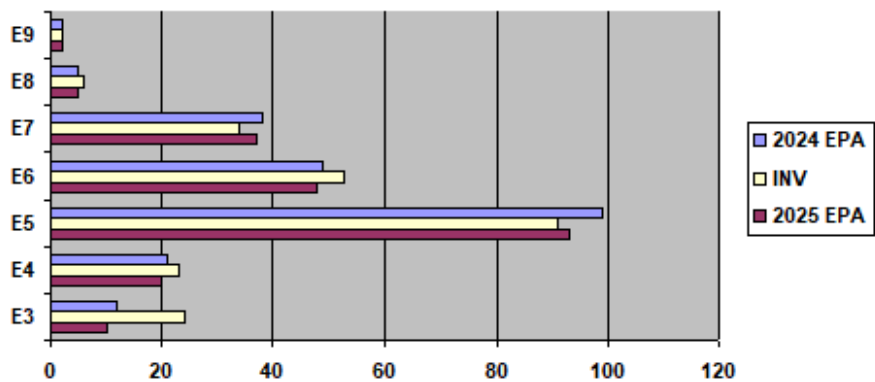


Sea Shore Rotation			FS MANNING			ADV OPP.	
TOUR	SEA	SHORE	PG	SEA	SHORE	AZTAR	All-Navy
E1-3	48	42	E1-3	88.89%	0.00%	TIR	TIR
E4	48	42	E4	177.78%	55.56%	66.67%	58.8%
E5	48	42	E5	94.92%	88.89%	42.86%	47.0%
E6	48	42	E6	136.36%	95.65%	2.44%	15.0%
E7	48	36	E7	100.00%	80.00%	16.67%	24.3%
E8	48	36	E8	400.00%	66.67%	0.00%	5.3%
E9	42	36	E9	0.00%	50.00%	0.00%	20.0%

Zone Information

	ZONE A	ZONE B	ZONE C	ZONE D	ZONE E	ALL ZONES
FY24 Manning:	110%	90%	112%	96%	112%	103%
FYTD RE Rate:	66.67%	80.00%	60.00%	100.00%	14.29%	63.33%
FY25 Manning:	112%	92%	118%	109%	120%	108%

EPA by Paygrade vs Inventory



	E1-3	E4	E5	E6	E7	E8	E9	TOTAL
% INV to FY24 EPA	200%	110%	92%	108%	89%	120%	100%	103%
EPA (FY24)	12	21	99	49	38	5	2	226
INVENTORY	24	23	91	53	34	6	2	233
EPA (FY25)	10	20	93	48	37	5	2	215
% INV to FY25 EPA	240%	115%	98%	110%	92%	120%	100%	108%

NOTES

*****OVERMANNED RATING*****

Current manning is 103% of FY24 Enlisted Programmed Authorizations.

-Convert IN opportunity: NONE.

-Convert OUT opportunity: Contact ECM for options.

****Security clearance is required for this rating****

****Interim clearance documentation must be provided to be considered****

For any questions regarding community health, contact your ECM at robert.e.derbyshire.mil@us.navy.mil.