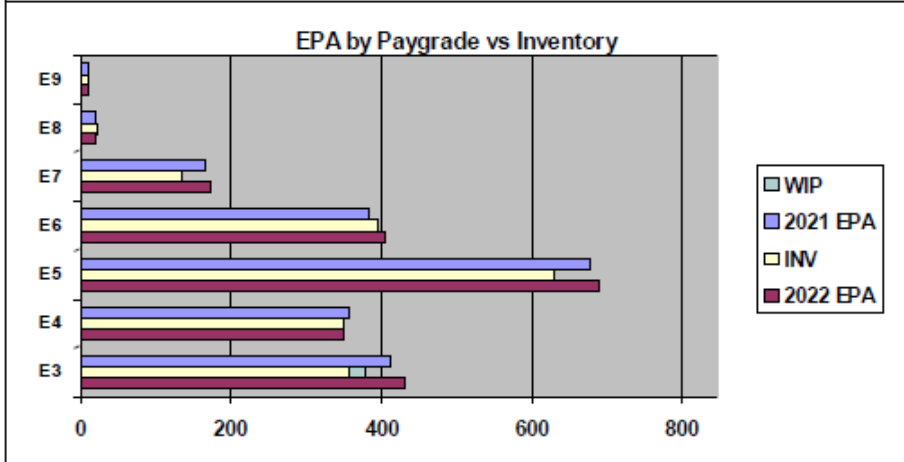
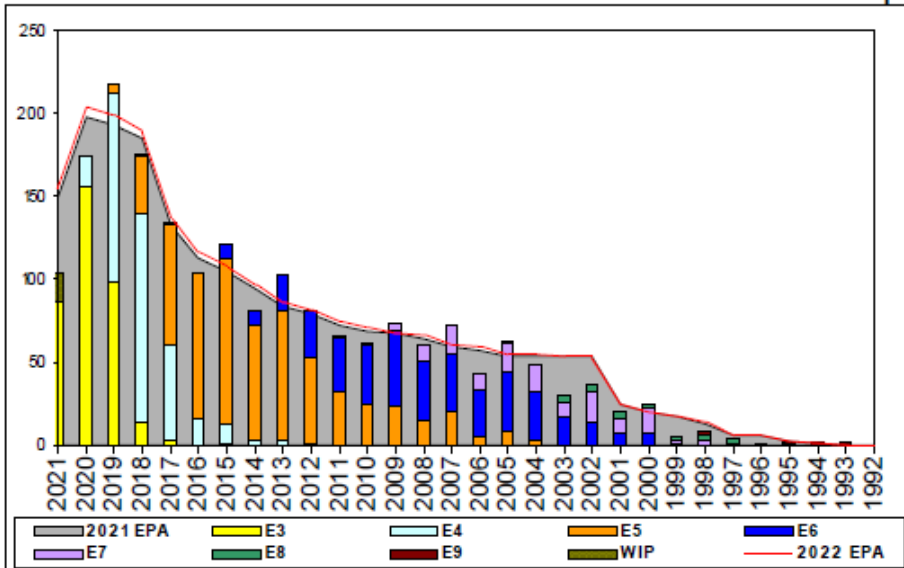


Aircrew Survival Equipmentman - A450



	E1-3	E4	E5	E6	E7	E8	E9	TOTAL
% INV to FY21 EPA	87%	98%	93%	103%	82%	105%	111%	94%
EPA (FY21)	411	357	676	384	165	21	9	2023
INVENTORY	359	350	629	395	135	22	10	1900
EPA (FY22)	433	349	689	403	175	21	9	2079
% INV to FY22 EPA	83%	100%	91%	98%	77%	105%	111%	91%
INV +WIP / FY21 EPA	92%							95%
INVENTORY	377	18 ← E-3 and Below WIP						1918
INV +WIP / FY22 EPA	87%							92%

Sea Shore Flow		
TOUR	SEA	SHORE
1ST	42	36
2ND	36	36
3RD	36	36
4TH	36	36
5TH	36	36
6TH	36	36
7TH	36	36

FORCE STRUCTURE MANNING TO BA											
PG	SEA	INV	BA	SHORE	INV	BA	SEA + SHORE	TOTAL INV	TOTAL BA		
E1-3	80.5%	202	251	108.4%	90	83	87.4%	292	334		
E4	116.1%	245	211	67.2%	88	131	97.4%	333	342		
E5	80.1%	323	403	107.6%	269	250	90.7%	592	653		
E6	107.3%	221	206	84.7%	144	170	97.1%	365	376		
E7	66.7%	66	99	93.4%	57	61	76.9%	123	160		
E8	180.0%	9	5	86.7%	13	15	110.0%	22	20		
E9	100.0%	1	1	112.5%	9	8	111.1%	10	9		
Total	90.7%	1067	1176	93.3%	670	718	91.7%	1737	1894		

ADV OPP. (Cycles 245/246/247)							
All-Navy 10yr Avg	E1-3	E4	E5	E6	E7	E8	E9
TIR		34.9%	22.1%	13.9%	22.0%	11.6%	13.1%
All-Navy PR	TIR	28.3%	20.8%	8.1%	25.9%	13.6%	12.3%
		40.9%	22.3%	5.9%	27.2%	8.7%	22.2%

Zone Info	ZONE A	ZONE B	ZONE C	ZONE D	ZONE E	ALL ZONES
FY21 Manning:	93.0%	104.0%	100.0%	85.0%	74.0%	94.0%
FYTD RENL Rate:	73.7%	70.2%	93.9%	96.4%	35.0%	75.3%
FY22 Manning:	91.0%	101.0%	98.0%	83.0%	73.0%	91.4%

NOTES

Manning currently at 94% for FY21 EPA and 91% for FY22 EPA.

- Convert In is very limited due to school seats.
- No Convert out
- This is an "A" school required rating.

Not approving ASVAB waivers at this time
 ASVAB requirements: VE+AR+MK+AS=185 or MK+AS+AO=140.