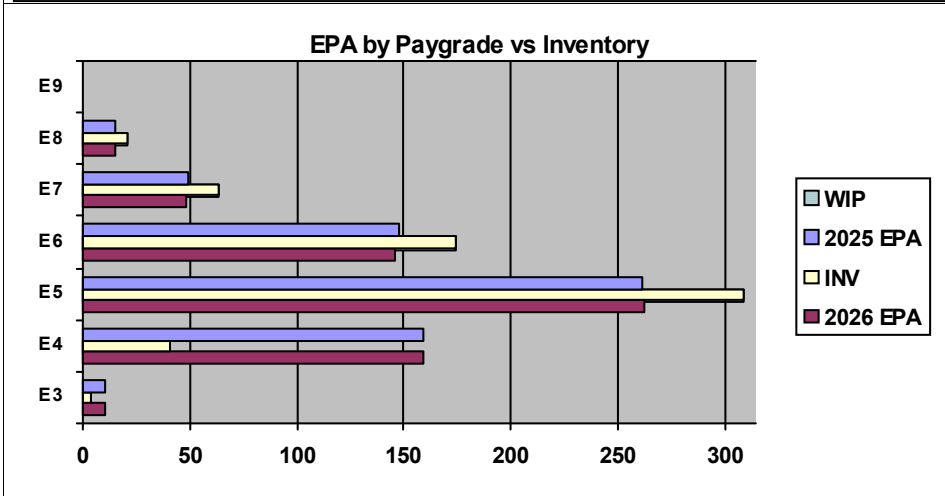
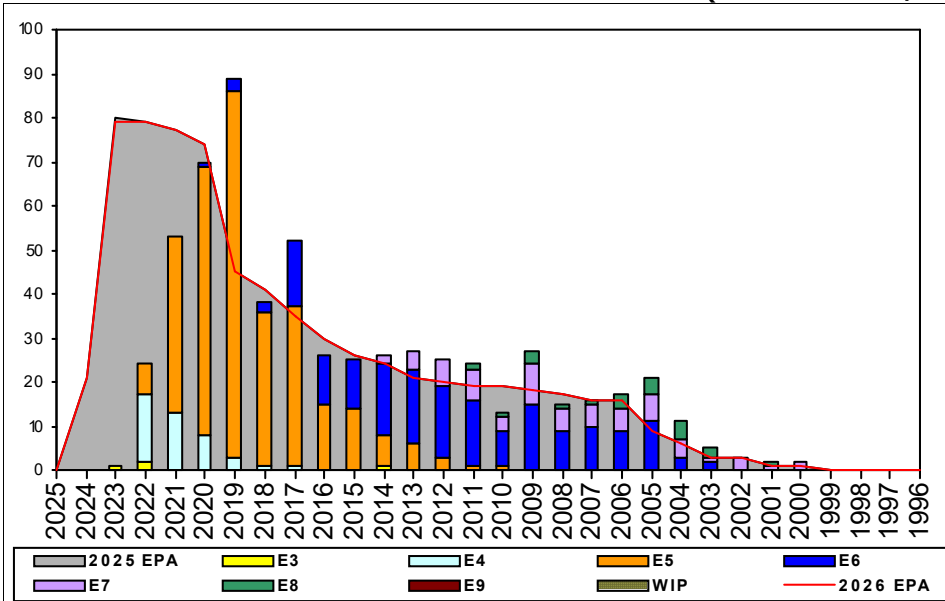


# CTI (Middle East/North Africa) - B511



	E1-3	E4	E5	E6	E7	E8	E9	TOTAL
<b>% INV to FY25 EPA</b>	<b>40%</b>	<b>26%</b>	<b>118%</b>	<b>118%</b>	<b>129%</b>	<b>140%</b>		<b>95%</b>
<b>EPA (FY25)</b>	10	159	261	148	49	15		642
<b>INVENTORY</b>	4	41	309	174	63	21		612
<b>EPA (FY26)</b>	10	159	262	146	48	15		640
<b>% INV to FY26 EPA</b>	<b>40%</b>	<b>26%</b>	<b>118%</b>	<b>118%</b>	<b>129%</b>	<b>140%</b>		<b>96%</b>
<b>INV +WIP / FY25 EPA</b>								
<b>INVENTORY</b>			← E-3 and Below WIP					
<b>INV +WIP / FY26 EPA</b>								

Sea Shore Flow		
TOUR	SEA	SHORE
1ST		
2ND		
3RD		
4TH		
5TH		
6TH		
7TH		

FORCE STRUCTURE MANNING TO BA										
PG	SEA	INV	BA	SHORE	INV	BA	SEA + SHORE	TOTAL INV	TOTAL BA	
E1-3	0.0%		1	28.6%	2	7	25.0%	2	8	
E4	30.0%	3	10	25.4%	36	142	25.7%	39	152	
E5	164.5%	51	31	104.2%	225	216	111.7%	276	247	
E6	195.8%	47	24	94.7%	108	114	112.3%	155	138	
E7	233.3%	21	9	97.4%	38	39	122.9%	59	48	
E8	250.0%	5	2	114.3%	16	14	131.3%	21	16	
E9										
<b>Total</b>	<b>164.9%</b>	<b>127</b>	<b>77</b>	<b>79.9%</b>	<b>425</b>	<b>532</b>	<b>90.6%</b>	<b>552</b>	<b>609</b>	

### ADV OPP. (Cycles 261/262/264)

Pay Grade	E1-3	E4	E5	E6	E7	E8	E9
All-Navy	TIR	TIR	18.54	10.62%	31.44%	21.60%	22.32%
CTI	TIR	100.0%	63.6%	15.2%	17.4%	18.4%	0.0%

### Zone Info

	ZONE A	ZONE B	ZONE C	ZONE D	ZONE E	ALL ZONES
<b>FY25 Manning:</b>	<b>70.0%</b>	<b>95.0%</b>	<b>113.0%</b>	<b>106.0%</b>	<b>104.0%</b>	<b>87.0%</b>
<b>FYTD RENL Rate:</b>	23.1%	60.0%		100.0%	50.0%	38.5%
<b>FY26 Manning:</b>	<b>70.0%</b>	<b>95.0%</b>	<b>113.0%</b>	<b>106.0%</b>	<b>104.0%</b>	<b>95.6%</b>

### NOTES

ARABIC \*\*\*ZONE A SRB now available!\*\*\*

- Overall ARB manning is 117% (INV/BA).

PERSIAN \*\*\*ZONES A/B/C SRB now available!\*\*\*

- Overall PES manning is 77% (INV/BA).

\*\*\*Billets are being coded for INT/ADV NECs, recommend updating your MNA searches and reaching out to the detailers for further information.\*\*\*

Rating conversions will be considered on a case-by-case basis.

The TECHAD is available at 901-874-2653 for questions.