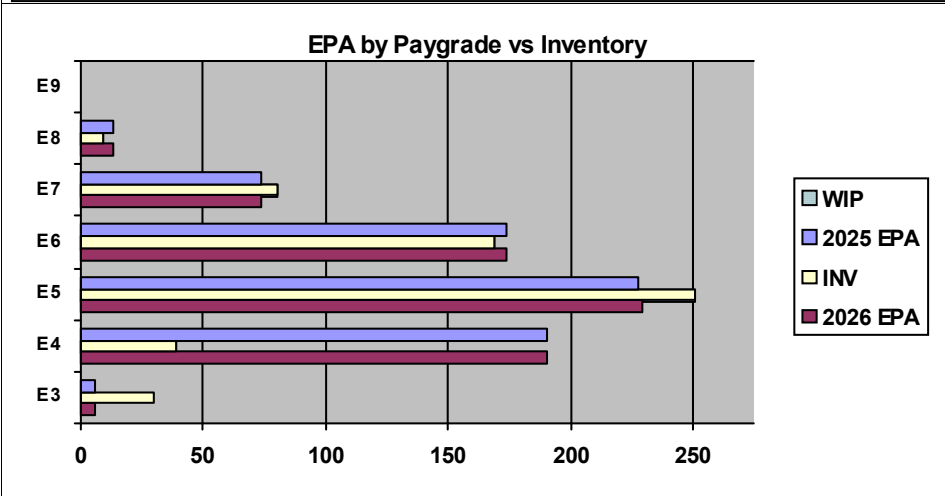
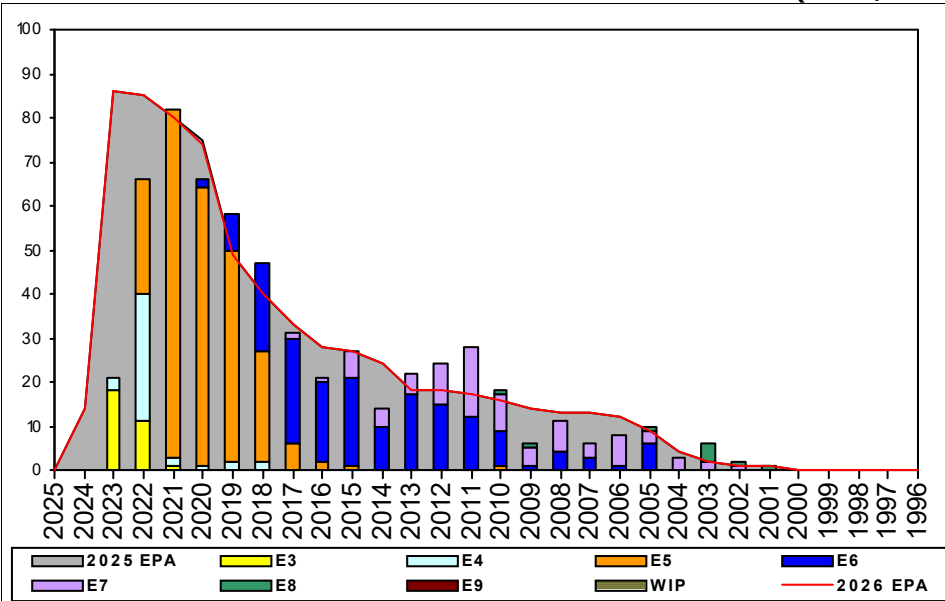


# CTI (East/Far East) - B512



	E1-3	E4	E5	E6	E7	E8	E9	TOTAL
<b>% INV to FY25 EPA</b>	<b>500%</b>	<b>21%</b>	<b>110%</b>	<b>97%</b>	<b>108%</b>	<b>69%</b>		<b>84%</b>
<b>EPA (FY25)</b>	6	190	228	174	74	13		685
<b>INVENTORY</b>	30	39	251	169	80	9		578
<b>EPA (FY26)</b>	6	190	229	174	74	13		686
<b>% INV to FY26 EPA</b>	<b>500%</b>	<b>21%</b>	<b>110%</b>	<b>97%</b>	<b>108%</b>	<b>69%</b>		<b>84%</b>
<b>INV +WIP / FY25 EPA</b>								
<b>INVENTORY</b>			← E-3 and Below WIP					
<b>INV +WIP / FY26 EPA</b>								

Sea Shore Flow		
TOUR	SEA	SHORE
1ST		
2ND		
3RD		
4TH		
5TH		
6TH		
7TH		

FORCE STRUCTURE MANNING TO BA										
PG	SEA	INV	BA	SHORE	INV	BA	SEA + SHORE	TOTAL INV	TOTAL BA	
E1-3	#Div/0!	2		#Div/0!	24		#Div/0!	26		
E4	18.8%	3	16	21.1%	35	166	20.9%	38	182	
E5	67.6%	25	37	122.5%	218	178	113.0%	243	215	
E6	143.5%	33	23	83.2%	119	143	91.6%	152	166	
E7	105.3%	20	19	114.0%	57	50	111.6%	77	69	
E8	#Div/0!	2		46.2%	6	13	61.5%	8	13	
E9										
<b>Total</b>	<b>89.5%</b>	<b>85</b>	<b>95</b>	<b>83.5%</b>	<b>459</b>	<b>550</b>	<b>84.3%</b>	<b>544</b>	<b>645</b>	

### ADV OPP. (Cycles 261/262/264)

Pay Grade	E1-3	E4	E5	E6	E7	E8	E9
All-Navy	TIR	TIR	18.54	10.62%	31.44%	21.60%	22.32%
<b>CTI</b>	TIR	100.0%	76.1%	100.0%	40.9%	34.4%	0.0%

### Zone Info

	ZONE A	ZONE B	ZONE C	ZONE D	ZONE E	ALL ZONES
<b>FY25 Manning:</b>	<b>83.0%</b>	<b>88.0%</b>	<b>103.0%</b>	<b>68.0%</b>	<b>94.0%</b>	<b>85.0%</b>
<b>FYTD RENL Rate:</b>	61.5%	66.7%	100.0%	100.0%	100.0%	73.9%
<b>FY26 Manning:</b>	<b>83.0%</b>	<b>88.0%</b>	<b>103.0%</b>	<b>68.0%</b>	<b>94.0%</b>	<b>84.3%</b>

### NOTES

CHINESE \*\*\*ZONE A/B/C SRB available\*\*\*

- Overall CMN Manning is at 86% (INV/BA).

KOREAN \*\*\*ZONE A SRB now available!\*\*\*

- Overall KOR Manning is at 104% (INV/BA).

- We will always need more KORLINGS than BA due to the short tours in Korea.

- Have you been to Korea?

\*\*\*Billets are being coded for INT/ADV NECs, recommend updating your MNA searches and reaching out to the detailers for further information.\*\*\*

Rating conversions will be considered on a case-by-case basis.

The TECHAD is available at 901-874-2653 for questions.