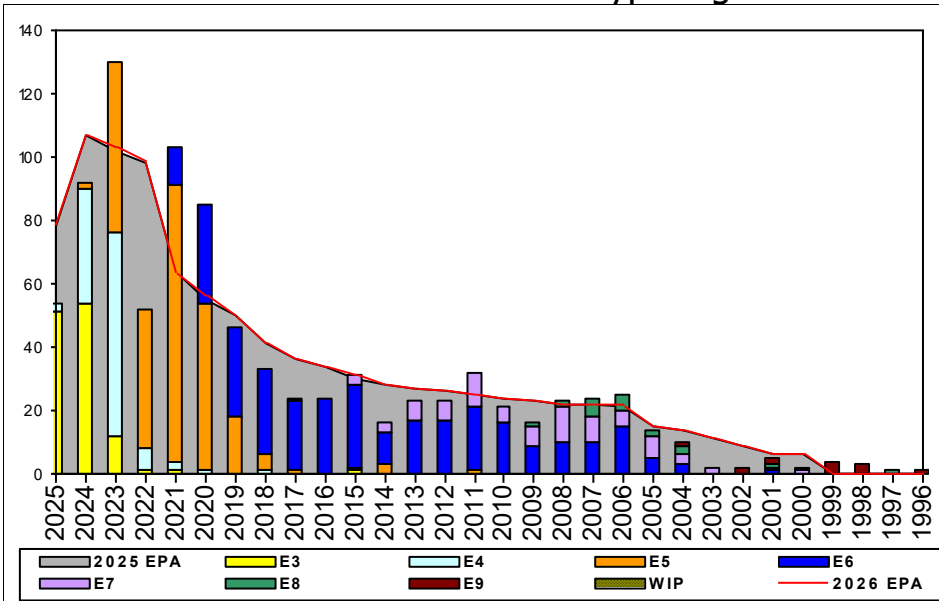


# Cryptologic Technician (Maintenance) - B520



## Sea Shore Flow

| TOUR | SEA | SHORE |
|------|-----|-------|
| 1ST  | 48  | 36    |
| 2ND  | 48  | 36    |
| 3RD  | 36  | 36    |
| 4TH  | 36  | 36    |
| 5TH  | 36  | 36    |
| 6TH  | 36  | 36    |
| 7TH  | 36  | 36    |

## FORCE STRUCTURE MANNING TO BA

| PG           | SEA          | INV        | BA         | SHORE        | INV        | BA         | SEA + SHORE  | TOTAL INV  | TOTAL BA   |
|--------------|--------------|------------|------------|--------------|------------|------------|--------------|------------|------------|
| E1-3         | 900.0%       | 9          | 1          | 91.7%        | 11         | 12         | 153.8%       | 20         | 13         |
| E4           | 28.8%        | 49         | 170        | 75.0%        | 36         | 48         | 39.0%        | 85         | 218        |
| E5           | 159.0%       | 194        | 122        | 46.8%        | 59         | 126        | 102.0%       | 253        | 248        |
| E6           | 81.2%        | 134        | 165        | 144.6%       | 146        | 101        | 105.3%       | 280        | 266        |
| E7           | 79.4%        | 27         | 34         | 88.7%        | 47         | 53         | 85.1%        | 74         | 87         |
| E8           | 85.7%        | 6          | 7          | 65.2%        | 15         | 23         | 70.0%        | 21         | 30         |
| E9           | 50.0%        | 1          | 2          | 144.4%       | 13         | 9          | 127.3%       | 14         | 11         |
| <b>Total</b> | <b>83.8%</b> | <b>420</b> | <b>501</b> | <b>87.9%</b> | <b>327</b> | <b>372</b> | <b>85.6%</b> | <b>747</b> | <b>873</b> |

## TIS to PG Years

| Pay Grade | E1-E3 | E4  | E5  | E6  | E7   | E8   | E9   |
|-----------|-------|-----|-----|-----|------|------|------|
| ALL Navy  | TIS   | 2.3 | 4.0 | 8.7 | 14.0 | 17.8 | 21.8 |
| CTM       | TIS   | 1.4 | 2.9 | 7.3 | 14.3 | 18.2 | 21.9 |
| ALL Navy  | TIG   | 1.3 | 1.9 | 4.7 | 5.9  | 5.1  | 4.7  |
| CTM       | TIG   | 0.8 | 1.4 | 3.7 | 7.2  | 5.3  | 3.7  |

## TIG to PG Years

| Pay Grade | E1-E3 | E4  | E5  | E6  | E7   | E8   | E9   |
|-----------|-------|-----|-----|-----|------|------|------|
| ALL Navy  | TIS   | 1.4 | 2.9 | 7.3 | 14.3 | 18.2 | 21.9 |
| CTM       | TIG   | 0.8 | 1.4 | 3.7 | 7.2  | 5.3  | 3.7  |

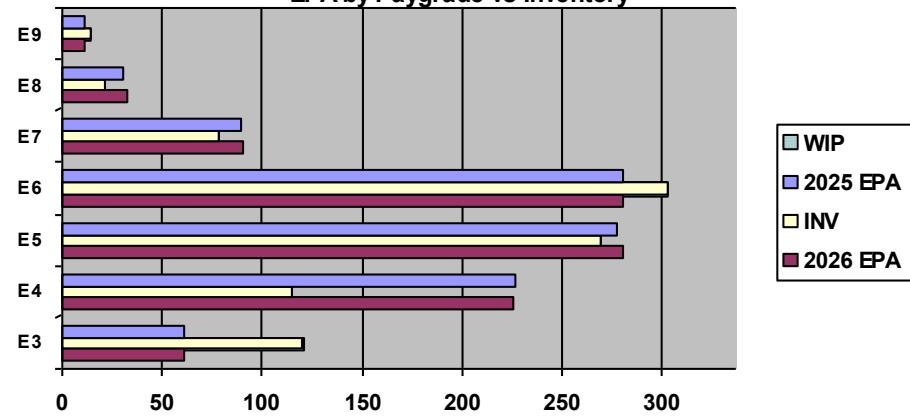
## Zone Info

|                 | ZONE A | ZONE B | ZONE C | ZONE D | ZONE E | ALL ZONES |
|-----------------|--------|--------|--------|--------|--------|-----------|
| FY25 Manning:   | 104.0% | 76.0%  | 80.0%  | 102.0% | 69.0%  | 94.0%     |
| FYTD RENL Rate: | 100.0% | 66.7%  | 95.0%  | 100.0% | 33.3%  | 79.3%     |

## NOTES

- \*\*SRB available for Zone A,B and C 0000, Zone B and C 771B, & SDIP for E4-E6\*\*
- Conversions handled on a case by case scenario.
- Convert-in opportunities (PACT, etc.) available for E6 and junior. Contact ECM.
- ASVAB: MK + EI + AR + VE = 221. Contact ECM for waiver options.
- ECM: CTMCM Mike Horton, michael.k.horton.mil@us.navy.mil  
Phone: 901-874-3870
- Additional SRB, SDIP information at:  
<https://www.mynavyhr.navy.mil/Career-Management/Community-Management/Enlisted-Career-Admin/SRB-SDAP-Enl-Bonus/>  
<https://www.mynavyhr.navy.mil/References/Pay-Benefits/SDIP/>

## EPA by Paygrade vs Inventory



|                      | E1-3 | E4  | E5                  | E6   | E7  | E8  | E9   | TOTAL |
|----------------------|------|-----|---------------------|------|-----|-----|------|-------|
| % INV to FY25 EPA    | 197% | 51% | 97%                 | 108% | 88% | 70% | 127% | 94%   |
| EPA (FY25)           | 61   | 226 | 277                 | 280  | 89  | 30  | 11   | 974   |
| INVENTORY            | 120  | 115 | 269                 | 303  | 78  | 21  | 14   | 920   |
| EPA (FY26)           | 61   | 225 | 280                 | 280  | 90  | 32  | 11   | 979   |
| % INV to FY26 EPA    | 197% | 51% | 97%                 | 108% | 88% | 70% | 127% | 94%   |
| INV + WIP / FY25 EPA | 198% |     |                     |      |     |     |      | 95%   |
| INVENTORY            | 121  | 1   | ← E-3 and Below WIP |      |     |     |      | 921   |
| INV + WIP / FY26 EPA | 198% |     |                     |      |     |     |      | 94%   |