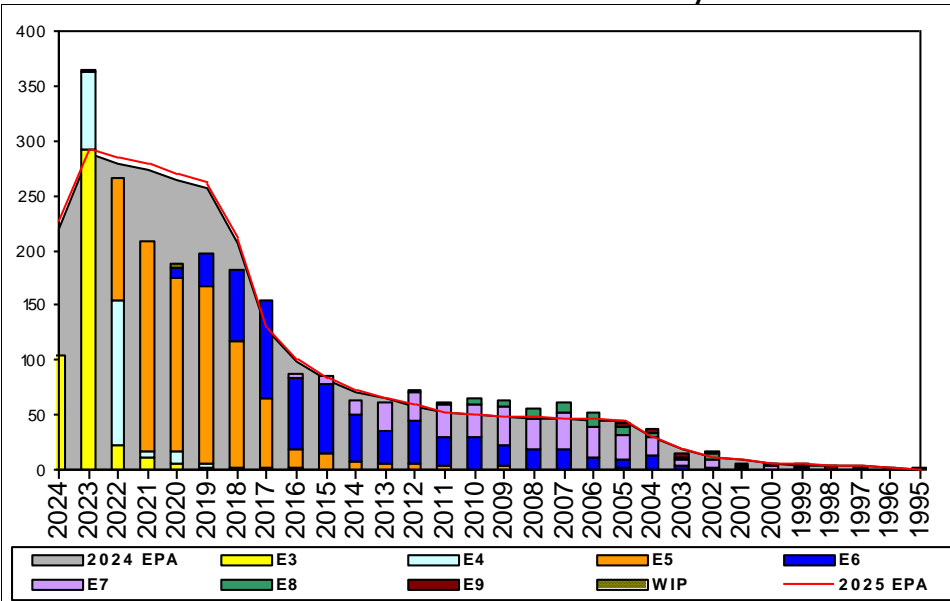


Cyber Warfare Technician - B525



TOUR	SEA	SHORE
1ST		
2ND		
3RD		
4TH		
5TH		
6TH		
7TH		

PG	SEA	INV	BA	SHORE	INV	BA	SEA + SHORE	TOTAL INV	TOTAL BA
E1-3	0.0%		4	75.5%	40	53	70.2%	40	57
E4	133.3%	4	3	40.3%	172	427	40.9%	176	430
E5	34.2%	26	76	93.9%	785	836	88.9%	811	912
E6	110.3%	75	68	99.2%	478	482	100.5%	553	550
E7	86.9%	53	61	100.0%	255	255	97.5%	308	316
E8	62.5%	5	8	97.1%	67	69	93.5%	72	77
E9	100.0%	1	1	83.3%	20	24	84.0%	21	25
Total	74.2%	164	221	84.7%	1817	2146	83.7%	1981	2367

ADV OPP. (Cycles 257/258/260)

Pay Grade	E1-3	E4	E5	E6	E7	E8	E9
All-Navy	TIR	45.0%	29.0%	9.0%	28.8%	16.8%	21.0%
CWT	TIR	100.0%	69.9%	9.2%	66.2%	14.7%	39.3%

Zone Info

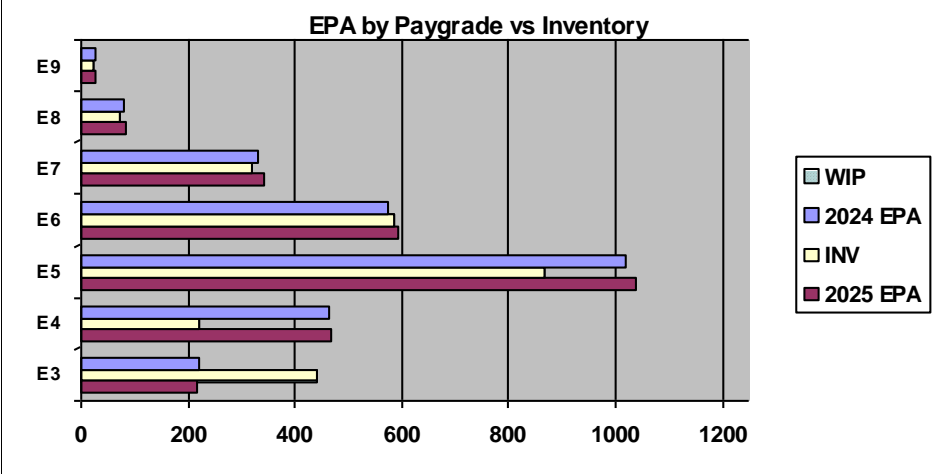
	ZONE A	ZONE B	ZONE C	ZONE D	ZONE E	ALL ZONES
FY24 Manning:	88.0%	91.0%	104.0%	121.0%	75.0%	93.0%
FYTD RENL Rate:	59.8%	61.0%	70.8%	95.0%	20.0%	61.0%
FY25 Manning:	87.0%	89.0%	102.0%	119.0%	73.0%	91.4%

NOTES

CWT ASVAB Requirements
 AR + 2MK + GS >= 255
 -or
 VE + AR + MK + MC >= 235
 -or
 CT + MK + VE >= 173 -and- CT >= 60

- Updated SRB information can be found at:
<https://www.mynavyhr.navy.mil/Career-Management/CommunityManagement/Enlisted-Career-Admin/SRB-SDAP-Enl-Bonus/>

TECHAD - CWTCM Stahl, jeremy.a.stahl.mil@us.navy.mil



	E1-3	E4	E5	E6	E7	E8	E9	TOTAL
% INV to FY24 EPA	200%	48%	85%	102%	98%	94%	81%	93%
EPA (FY24)	220	464	1018	573	329	79	27	2710
INVENTORY	439	222	865	585	321	74	22	2528
EPA (FY25)	217	468	1039	592	341	82	27	2766
% INV to FY25 EPA	202%	47%	83%	99%	94%	90%	81%	91%
INV + WIP / FY24 EPA	201%							93%
INVENTORY	442	3						2531
INV + WIP / FY25 EPA	204%							92%