

JULY 2024 HM MANNING SNAPSHOT

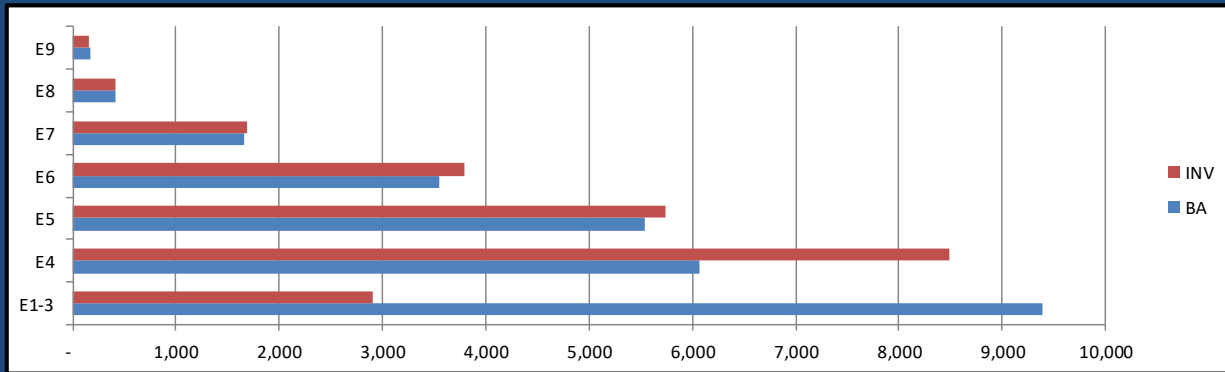
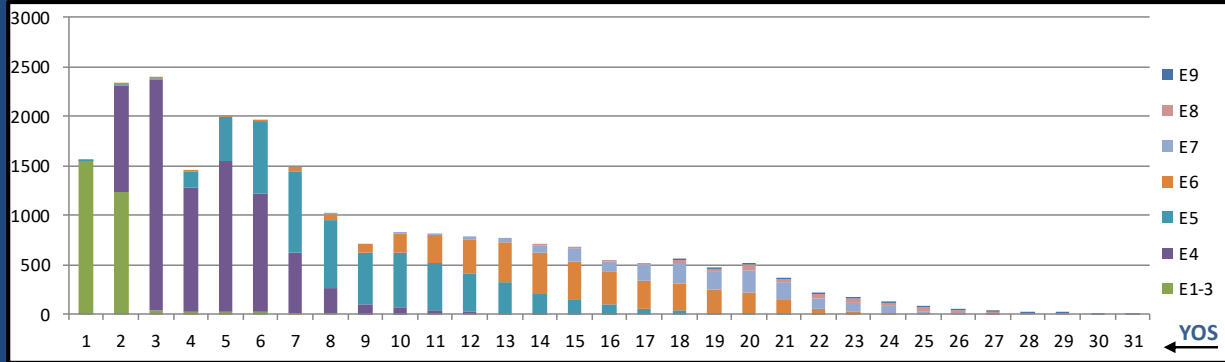
HM NEC MANNING 9 JUL 2024	NEC	BA	INV WITH PRIMARY NEC	INV/BA PRIMARY NEC	PRODUCTION NOTES	TOTAL INV W/NEC	TOTAL NEC INV/BA
SAR TECH	L00A	185	108	58.4%		111	60.0%
SUB IDC	L01A	202	180	89.1%		181	89.6%
FMF RECON IDC	L02A	273	231	84.6%		232	85.0%
FIELD MED TECH	L03A	5361	5778	107.8%		10627	198.2%
AERO MED TECH	L04A	556	570	102.5%		629	113.1%
RAD HEALTH TECH	L05A	91	83	91.2%		83	91.2%
CV TECH	L06A	59	64	108.5%		83	140.7%
AERO PHYS TECH	L07A	85	56	65.9%	38 L04As also carry L07A	96	112.9%
BIOMED EQ TECH	L08A	469	366	78.0%		367	78.3%
NUC MED TECH	L09A	18	23	127.8%		23	127.8%
SURFACE IDC	L10A	1224	980	80.1%		988	80.7%
PREV MED TECH	L12A	681	594	87.2%		600	88.1%
HEMO TECH	L13A	13	12	92.3%		12	92.3%
OPHTH SURG TECH	L14A	11	11	100.0%		11	100.0%
ULTRASOUND TECH	L15A	12	15	125.0%	3 HMs carry all L17A/L15A/L16A NECs	16	133.3%
MAMO TECH	L16A	10	7	70.0%	3 HMs carry all L17A/L15A/L16A NECs	9	90.0%
ADV X-RAY TECH	L17A	614	476	77.5%	Train to L15A & L16A	506	82.4%
END TECH	L18A	21	19	90.5%		19	90.5%
OPTICIAN	L19A	160	132	82.5%		136	85.0%
PT TECH	L20A	199	191	96.0%		200	100.5%
OT TECH	L21A	13	12	92.3%		12	92.3%
PHARM TECH	L22A	594	463	77.9%		476	80.1%
SURG TECH	L23A	1125	760	67.6%	Train to L14A & L25A	817	72.6%
BEHAV HLTH	L24A	562	495	88.1%		503	89.5%
UROLOGY TECH	L25A	52	58	111.5%		58	111.5%
ORTHOPEDIC TECH	L26A	140	117	83.6%		118	84.3%
DIVE MED TECH	L27A	121	81	66.9%	Train to L28A	92	76.0%
DIVE IDC	L28A	110	82	74.5%		82	74.5%
MORTICIAN	L29A	14	12	85.7%		12	85.7%
HISTO TECH	L30A	30	17	56.7%		17	56.7%
MED LAB TECH	L31A	1090	829	76.1%		830	76.1%
RES THER TECH	L32A	188	168	89.4%		169	89.9%
DENTAL ASSISTANT	L33A	1494	1478	98.9%		1546	103.5%
DENT HYGIENIST	L35A	93	61	65.6%		61	65.6%
DENT LAB BASIC	L36A	91	58	63.7%	Train to L37A	86	94.5%
DENT LAB ADV	L37A	98	79	80.6%		81	82.7%
DENT ORALMAX	L38A	8	7	87.5%		7	87.5%
DRUG & ALCOHOL COUNS. INTERN	810B	50	88	176.0%	Train to 810C; 4 HMs w/ other PRI NECs carry 810B	92	184.0%
DRUG & ALCOHOL COUNSELOR	810C	92	39	42.4%	2 HMs w/ other PRI NECs carry 810C	41	44.6%

		BA	INV	INV/BA
General Duty HM	0000/L03A	15945	14155	88.8%
NECs (less L03A)		10848	9022	83.2%
NOS G000 TOTAL		26793	23177	86.5%

Critically Undermanned <85% Undermanned 85%-94% Healthy 95%-104% Overmanned >105%

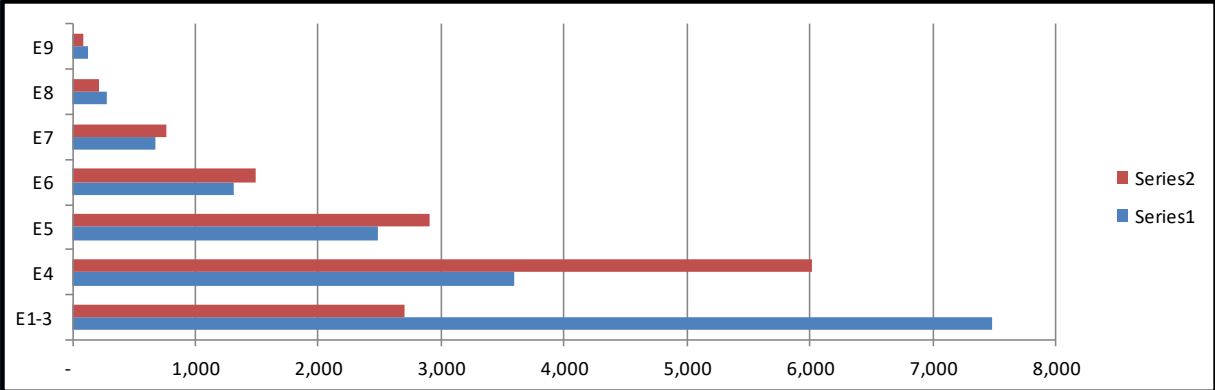
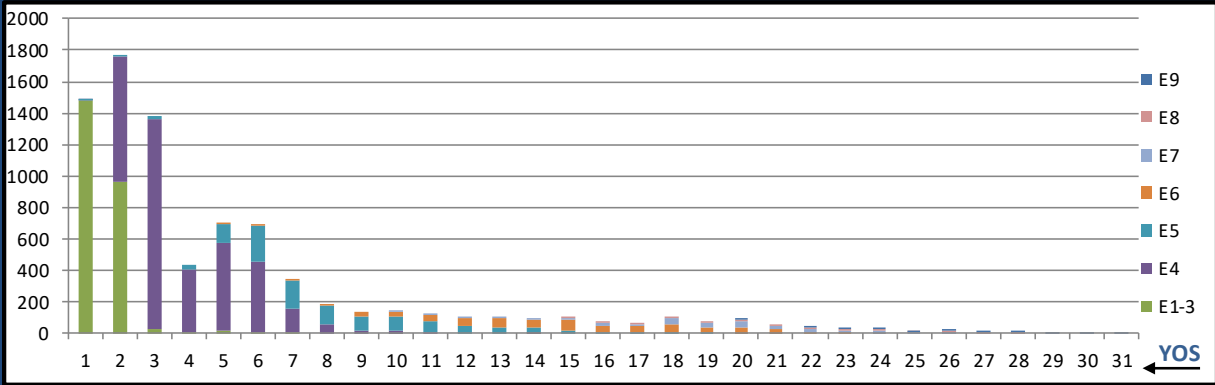
JULY 2024 HM MANNING SNAPSHOT

NOS G000-All



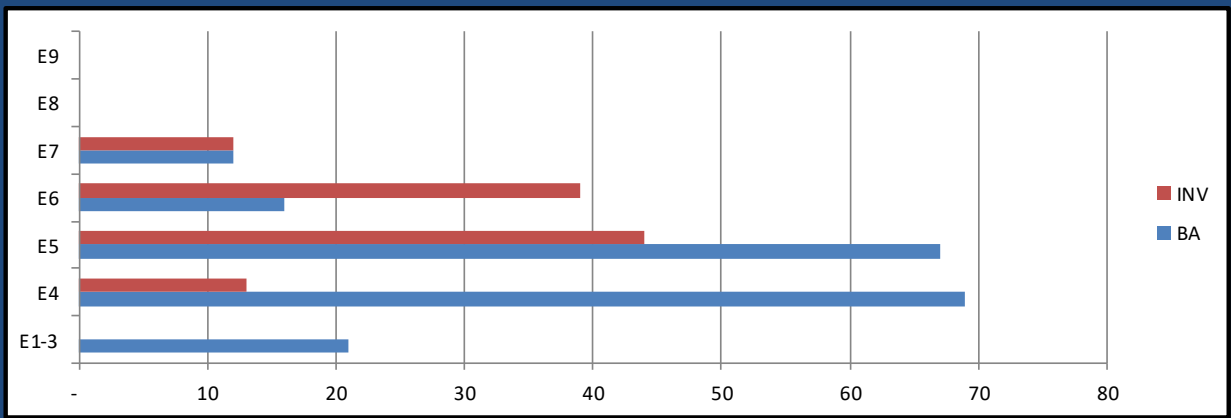
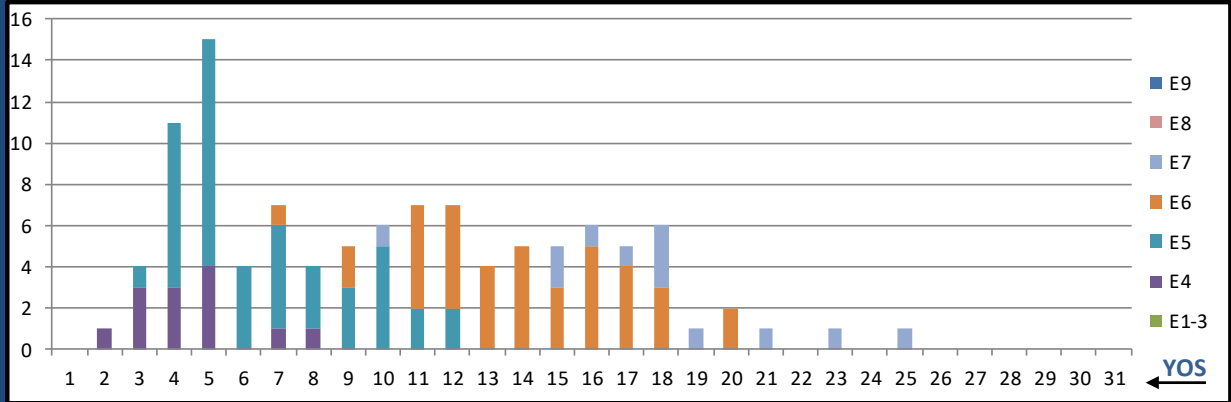
	E1-3	E4	E5	E6	E7	E8	E9	Total
%INV to BA	31%	140%	104%	107%	102%	97%	90%	87%
BA	9,396	6,068	5,540	3,546	1,656	420	167	26,793
Total Inventory	2,901	8,489	5,746	3,797	1,686	408	150	23,177
SJA Inventory	74%		105%			100%		

G000 GEN DUTY (0000/L03A)



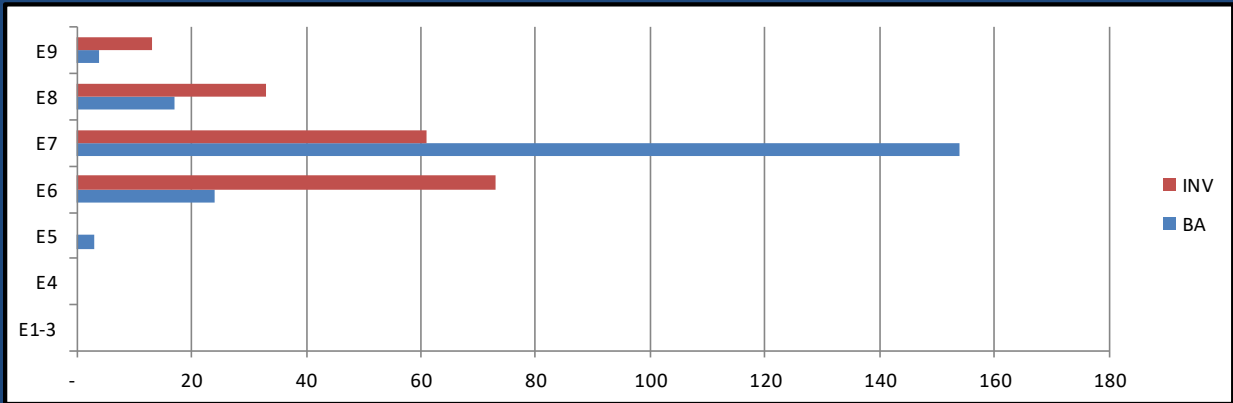
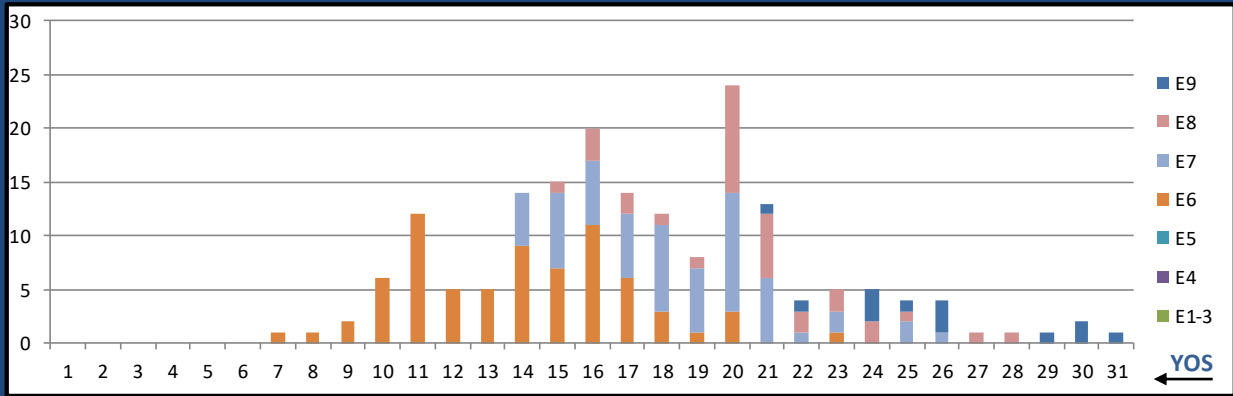
	E1-3	E4	E5	E6	E7	E8	E9	Total
%INV to BA	36%	168%	117%	114%	113%	77%	66%	89%
BA	7,489	3,590	2,485	1,311	669	273	125	15,942
Total Inventory	2,696	6,016	2,901	1,492	758	210	82	14,155
SJA Inventory	79%		116%		98%			

LOOA SAR TECH



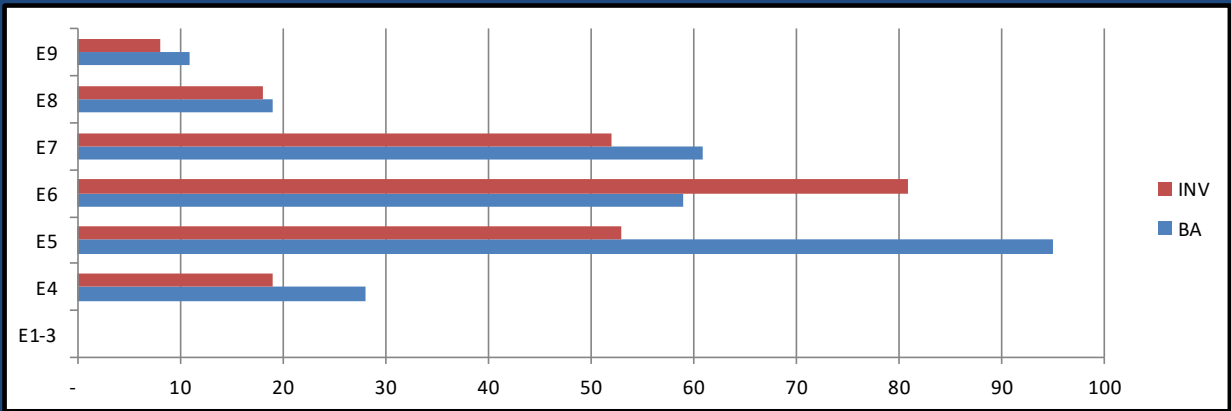
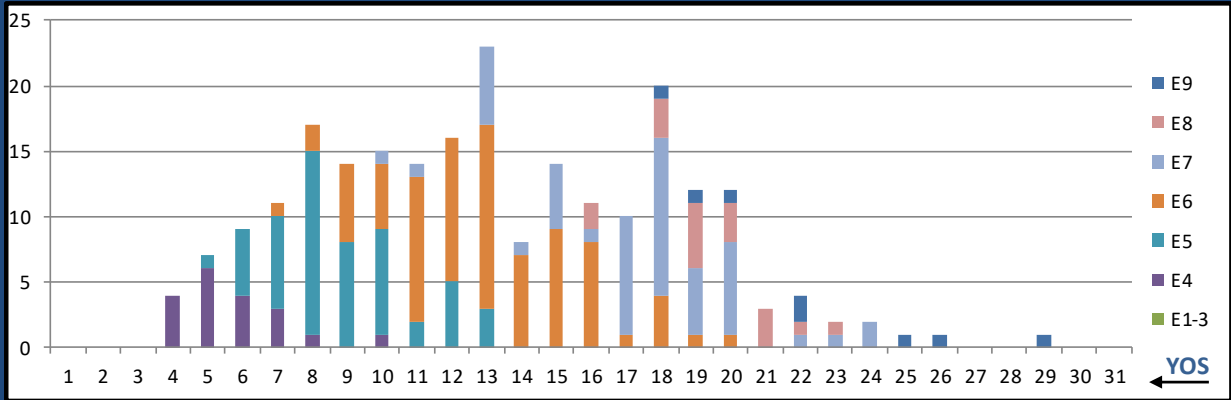
	E1-3	E4	E5	E6	E7	E8	E9	Total
%INV to BA	0%	19%	66%	244%	100%	0%	0%	58%
BA	21	69	67	16	12	-	-	185
Total Inventory	-	13	44	39	12	-	-	108
SJA Inventory	14%		100%			100%		

L01A SUB FORCE IDC



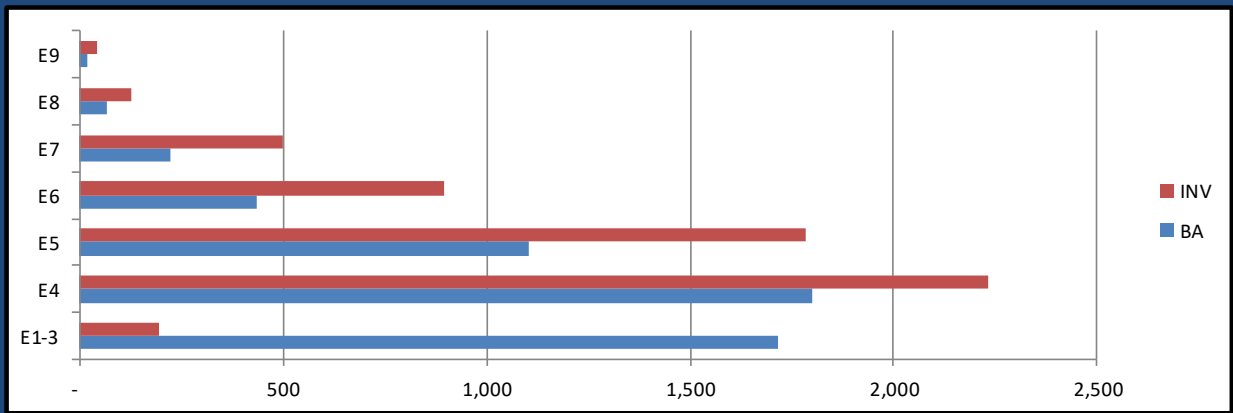
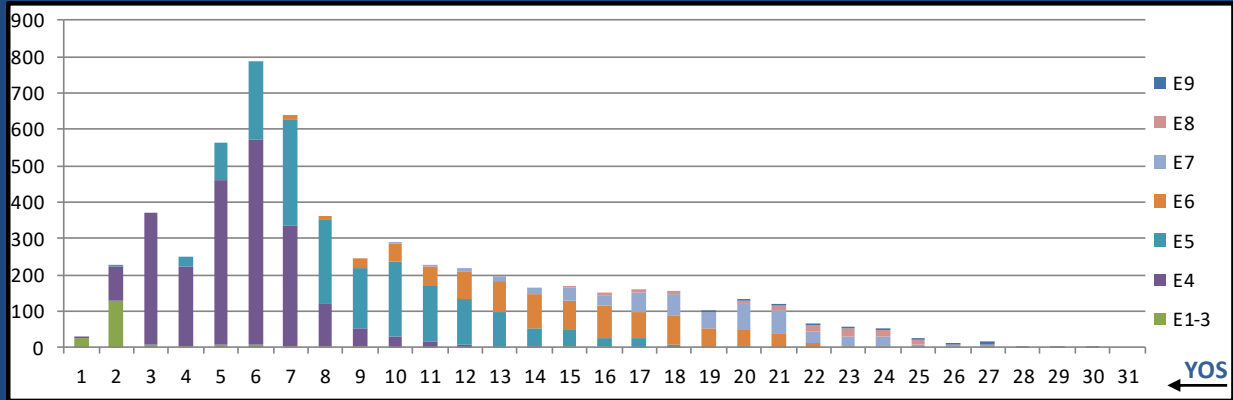
	E1-3	E4	E5	E6	E7	E8	E9	Total
%INV to BA	0%	0%	0%	304%	40%	194%	325%	89%
BA	-	-	3	24	154	17	4	202
Total Inventory	-	-	-	73	61	33	13	180
SJA Inventory	#DIV/0!		270%		61%			

L02A FMF RECON IDC



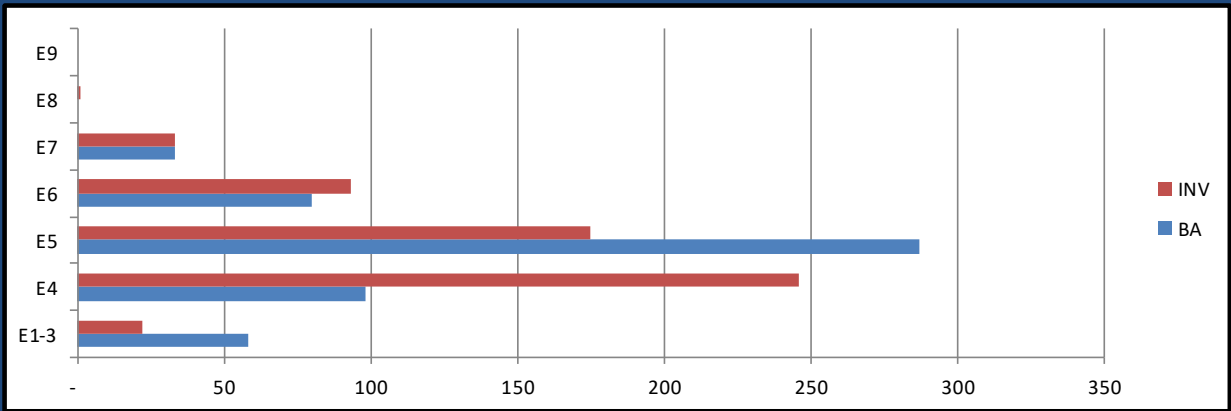
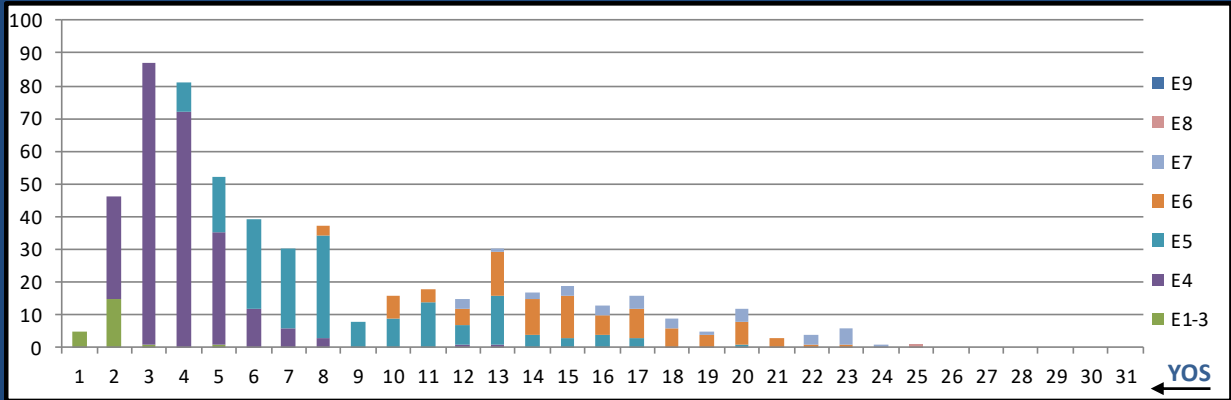
	E1-3	E4	E5	E6	E7	E8	E9	Total
%INV to BA	0%	68%	56%	137%	85%	95%	73%	85%
BA	-	28	95	59	61	19	11	273
Total Inventory	-	19	53	81	52	18	8	231
SJA Inventory	68%		87%		86%			

L03A FLD MED TECH



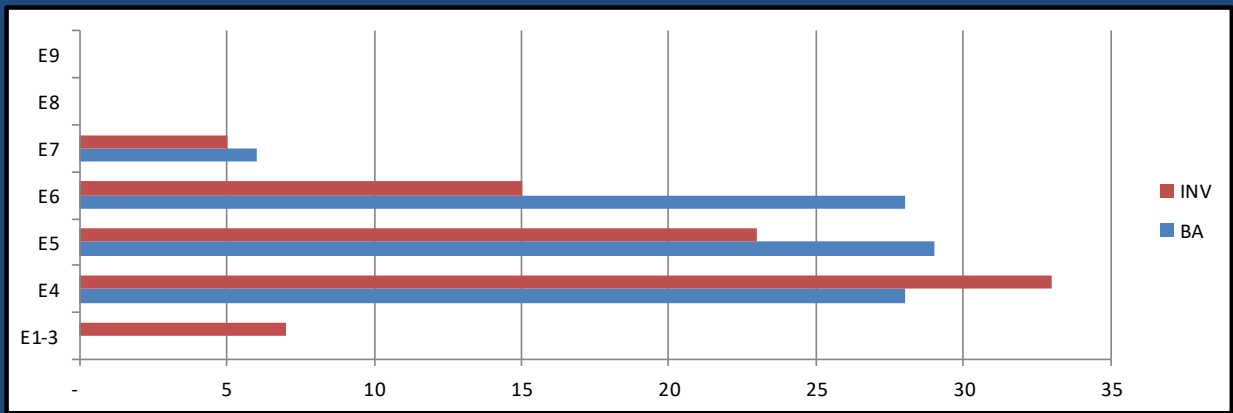
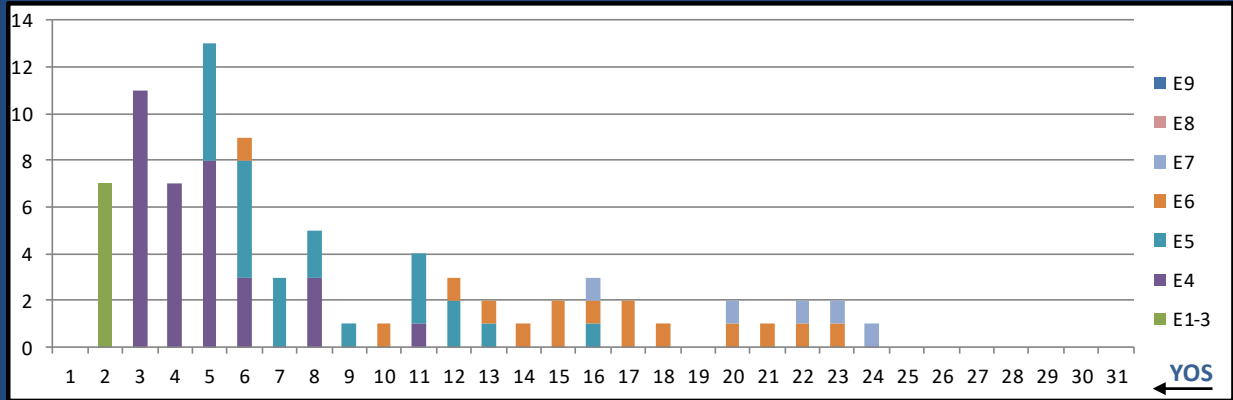
	E1-3	E4	E5	E6	E7	E8	E9	Total
%INV to BA	11%	124%	162%	206%	222%	193%	233%	108%
BA	1,714	1,798	1,104	435	225	67	18	5,361
Total Inventory	194	2,232	1,784	897	500	129	42	5,778
SJA Inventory	69%		174%		216%			

L04A AERO MED TECH



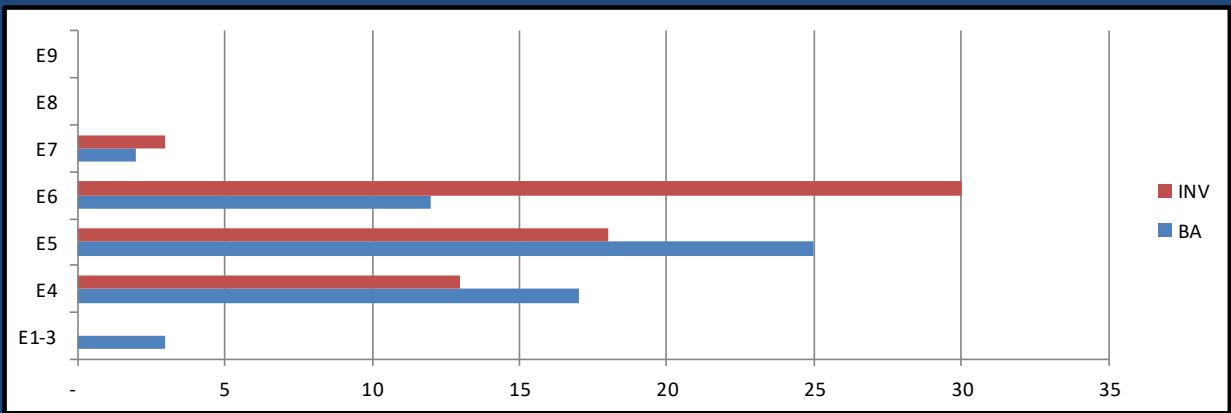
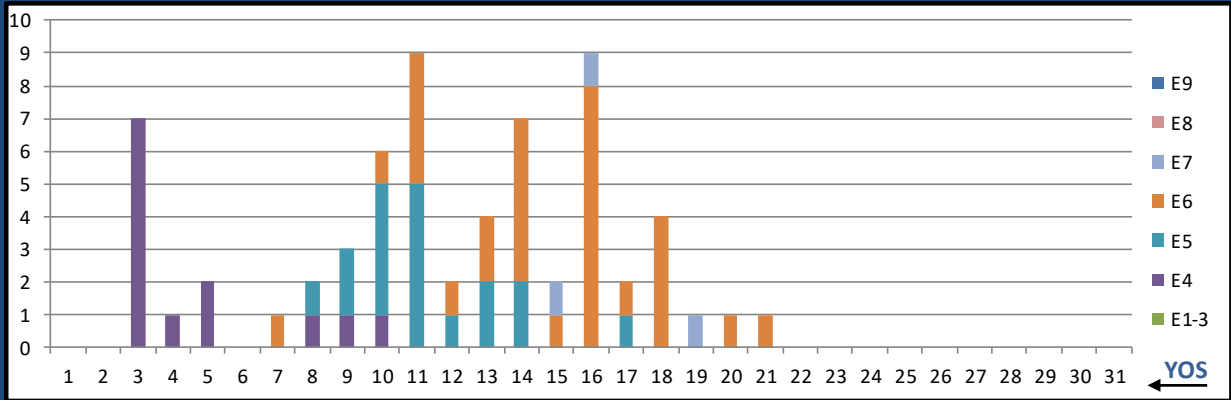
	E1-3	E4	E5	E6	E7	E8	E9	Total
%INV to BA	38%	251%	61%	116%	100%	0%	0%	103%
BA	58	98	287	80	33	-	-	556
Total Inventory	22	246	175	93	33	1	-	570
SJA Inventory	172%		73%		103%			

L05A RAD HLTH TECH



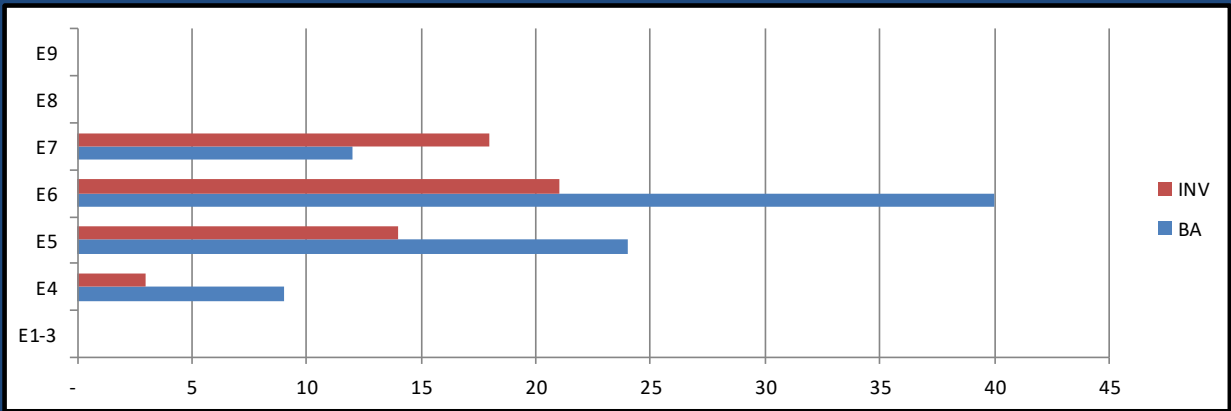
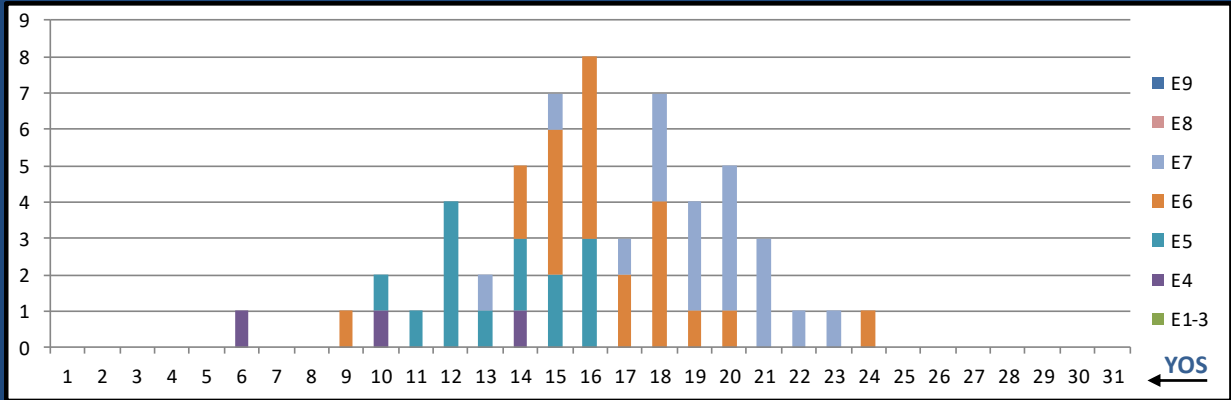
	E1-3	E4	E5	E6	E7	E8	E9	Total
%INV to BA	0%	118%	79%	54%	83%	0%	0%	91%
BA	-	28	29	28	6	-	-	91
Total Inventory	7	33	23	15	5	-	-	83
SJA Inventory	143%		67%		83%			

L06A CV TECH



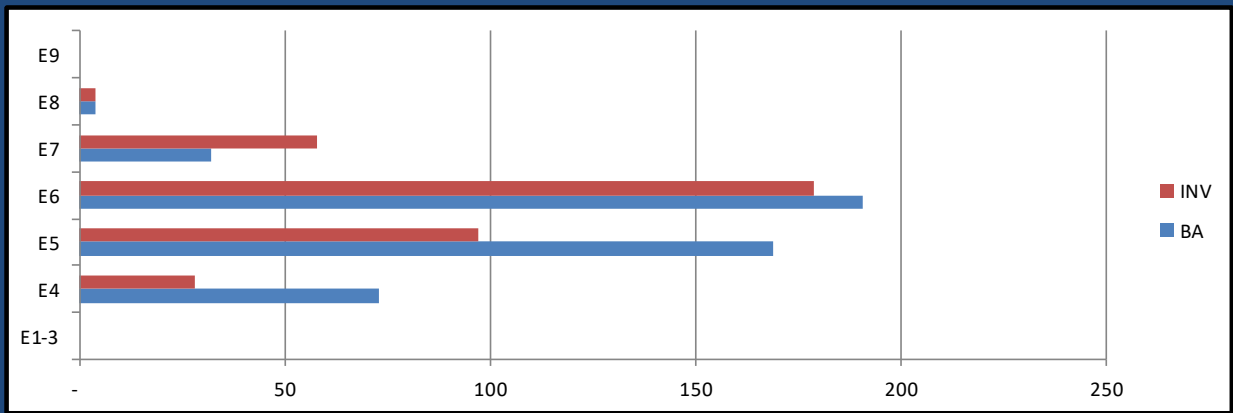
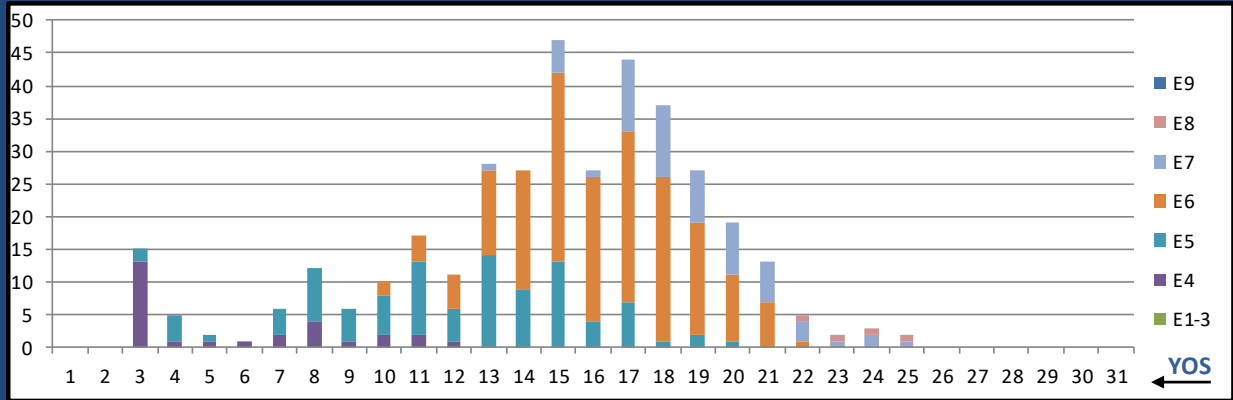
	E1-3	E4	E5	E6	E7	E8	E9	Total
%INV to BA	0%	76%	72%	250%	150%	0%	0%	108%
BA	3	17	25	12	2	-	-	59
Total Inventory	-	13	18	30	3	-	-	64
SJA Inventory	65%		130%		150%			

L07A AERO PHYS TECH



	E1-3	E4	E5	E6	E7	E8	E9	Total
%INV to BA	0%	33%	58%	53%	150%	0%	0%	66%
BA	-	9	24	40	12	-	-	85
Total Inventory	-	3	14	21	18	-	-	56
SJA Inventory	33%		55%		150%			

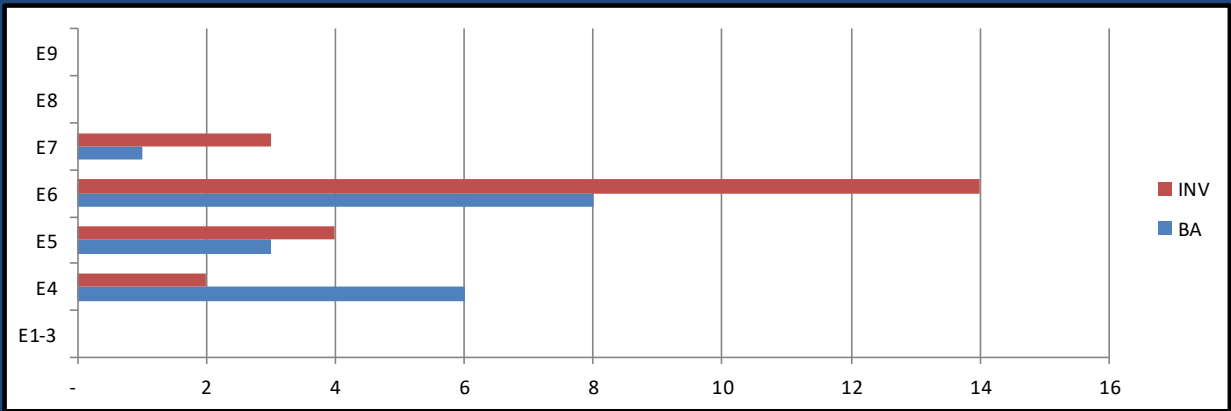
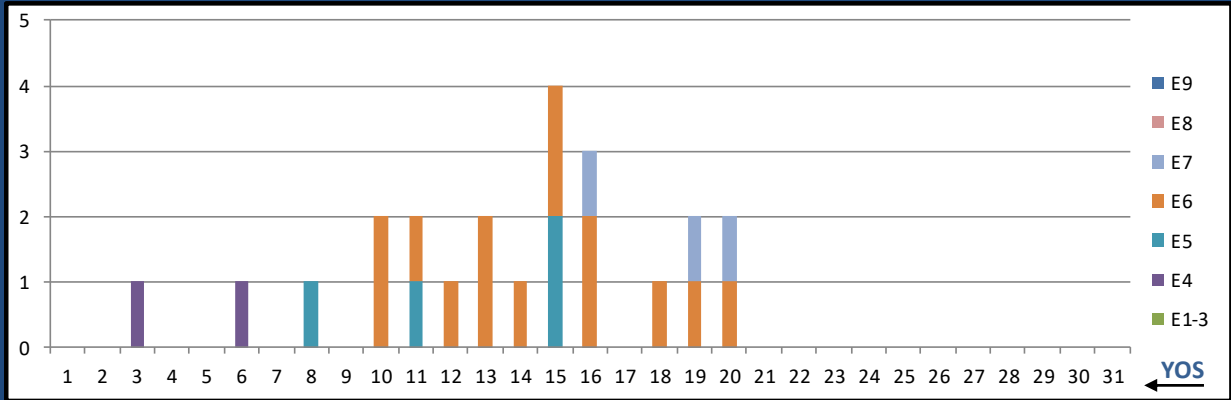
L08A BIOMED EQ TECH



	E1-3	E4	E5	E6	E7	E8	E9	Total
%INV to BA	0%	38%	57%	94%	181%	100%	0%	78%
BA	-	73	169	191	32	4	-	469
Total Inventory	-	28	97	179	58	4	-	366
SJA Inventory	38%		77%		172%			

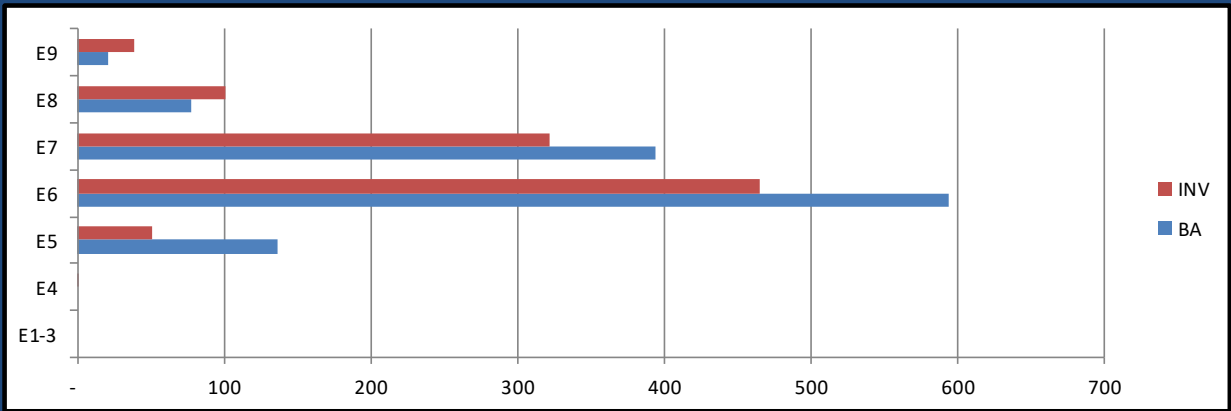
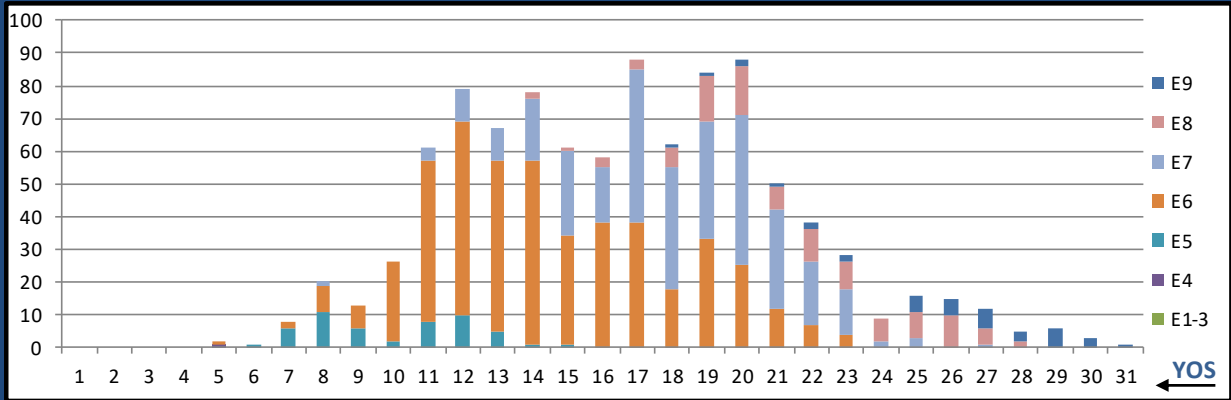
JULY 2024 HM MANNING SNAPSHOT

L09A NUC MED TECH



	E1-3	E4	E5	E6	E7	E8	E9	Total
%INV to BA	0%	33%	133%	175%	300%	0%	0%	128%
BA	-	6	3	8	1	-	-	18
Total Inventory	-	2	4	14	3	-	-	23
SJA Inventory	33%		164%		300%			

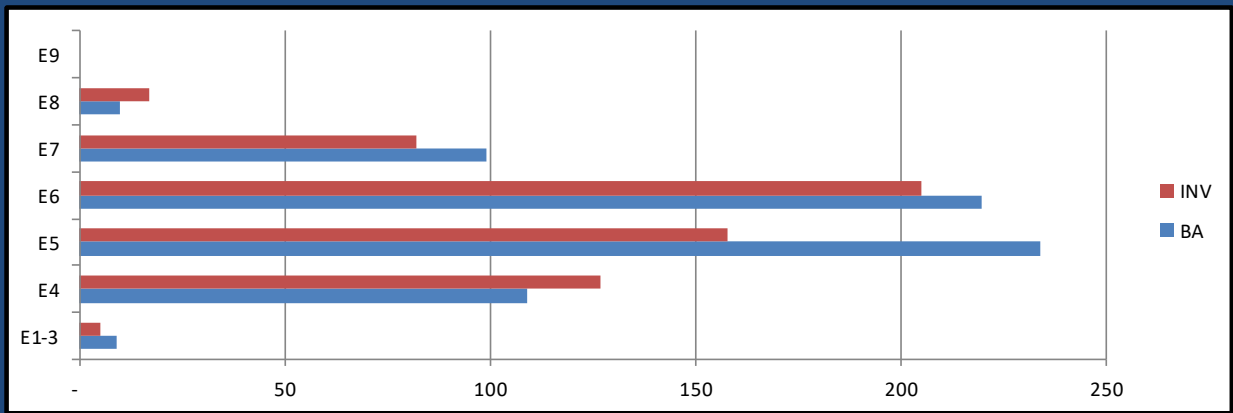
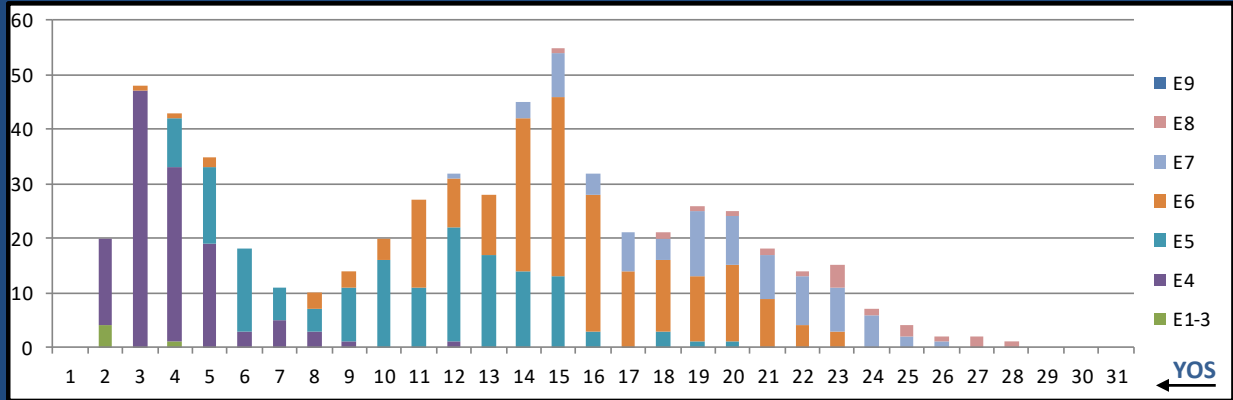
L10A SURFACE FORCE IDC



	E1-3	E4	E5	E6	E7	E8	E9	Total
%INV to BA	0%	0%	37%	78%	82%	129%	186%	80%
BA	-	-	137	594	394	78	21	1,224
Total Inventory	-	1	51	466	322	101	39	980
SJA Inventory	#DIV/0!		71%		94%			

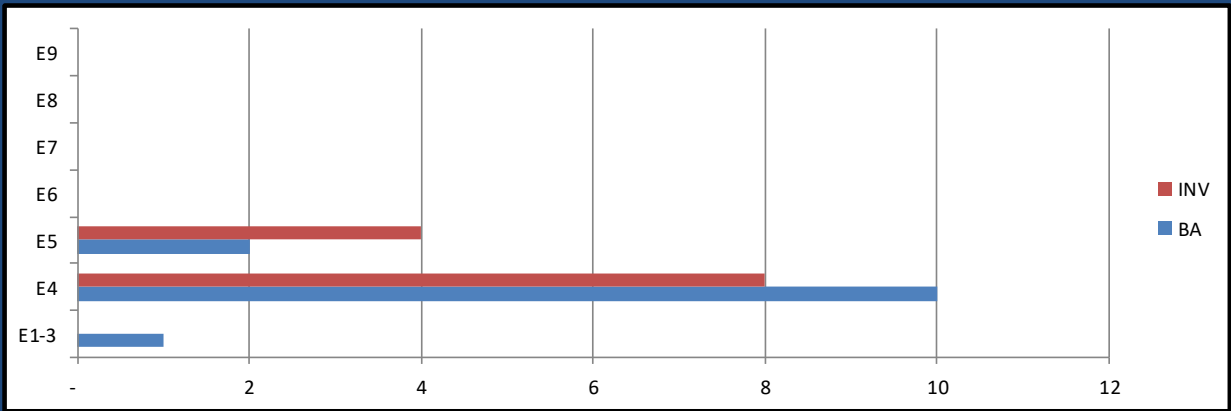
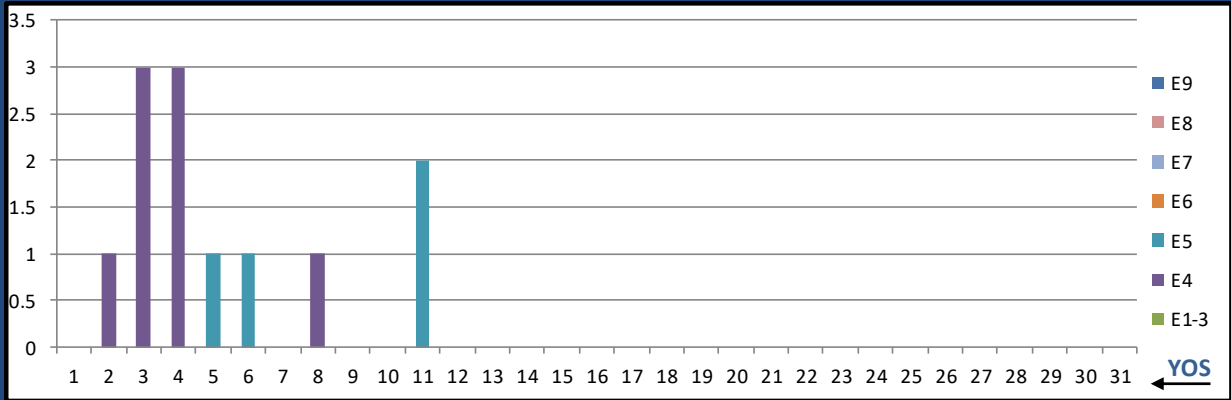
JULY 2024 HM MANNING SNAPSHOT

L12A PREV MED TECH



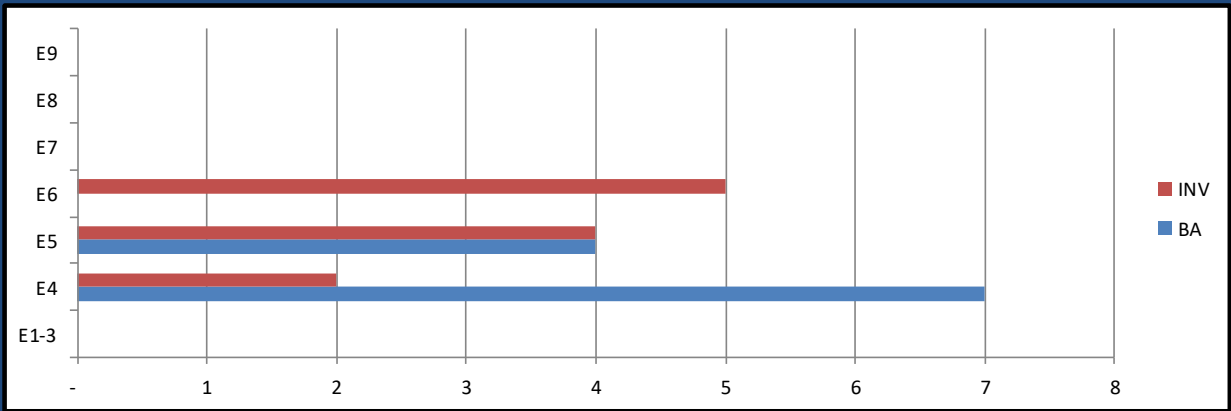
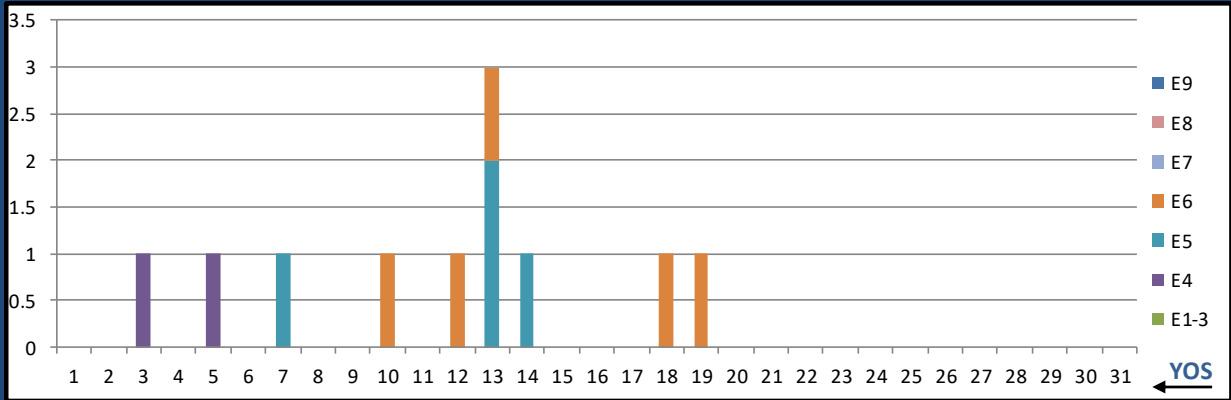
	E1-3	E4	E5	E6	E7	E8	E9	Total
%INV to BA	56%	117%	68%	93%	83%	170%	0%	87%
BA	9	109	234	220	99	10	-	681
Total Inventory	5	127	158	205	82	17	-	594
SJA Inventory	112%		80%		91%			

L13A HEMO TECH



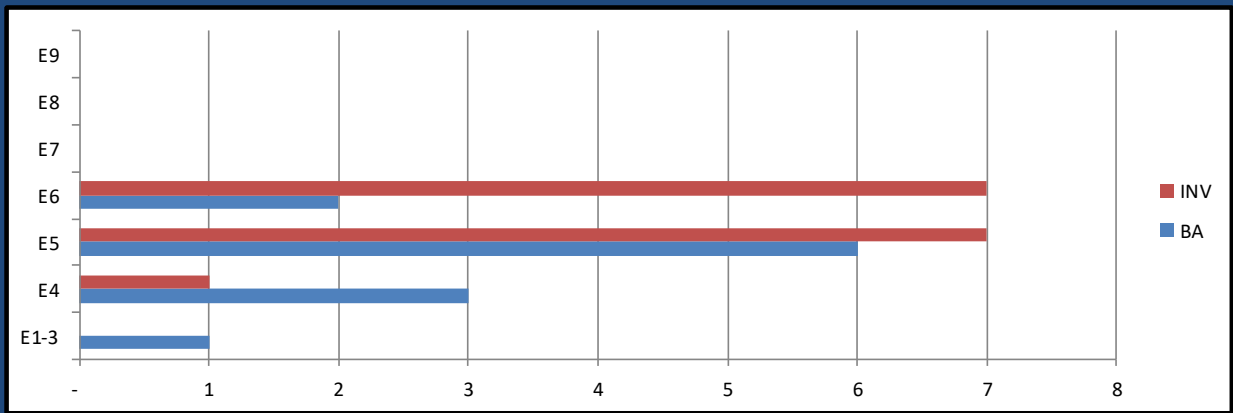
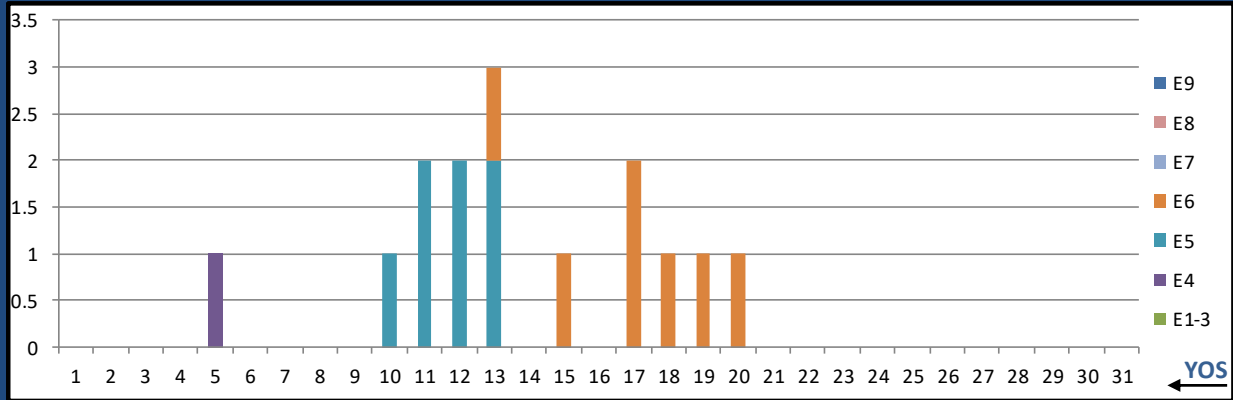
	E1-3	E4	E5	E6	E7	E8	E9	Total
%INV to BA	0%	80%	200%	0%	0%	0%	0%	92%
BA	1	10	2	-	-	-	-	13
Total Inventory	-	8	4	-	-	-	-	12
SJA Inventory	73%		200%			#DIV/0!		

L14A OPTH SURG TECH



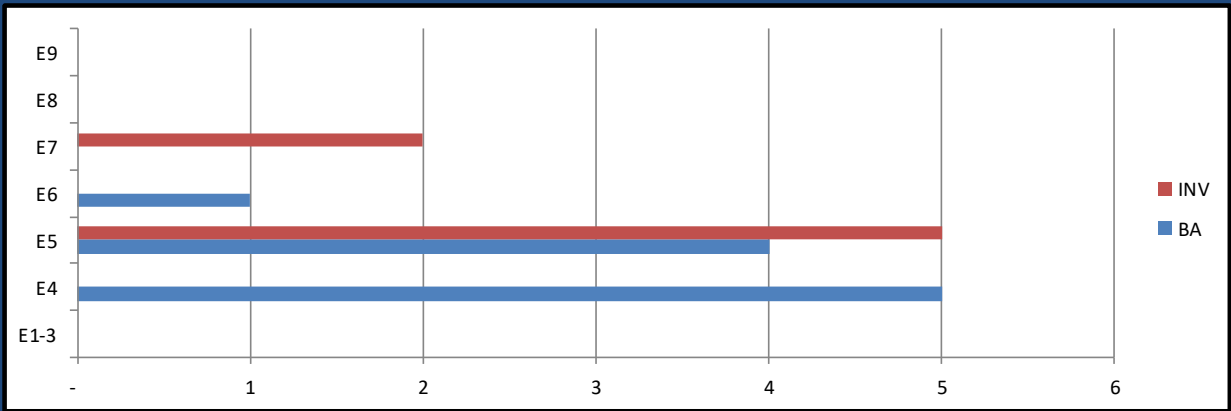
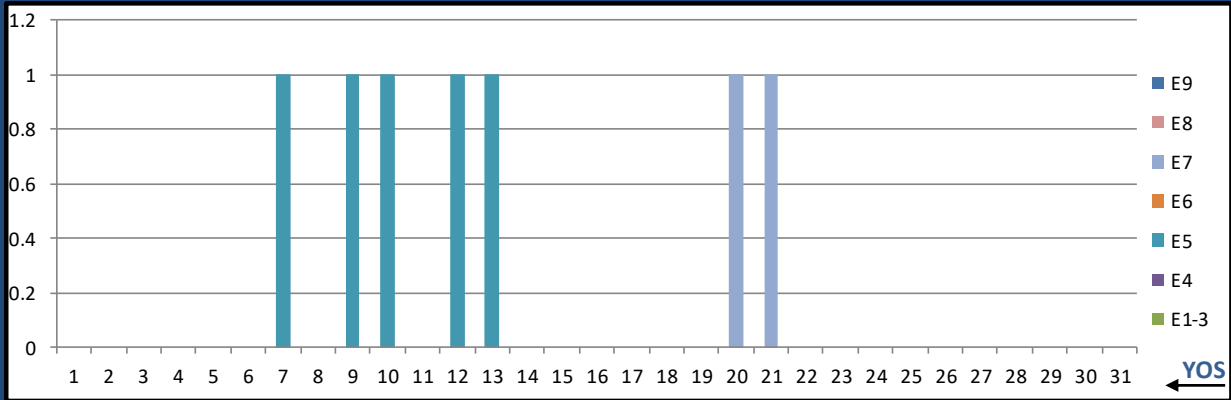
	E1-3	E4	E5	E6	E7	E8	E9	Total
%INV to BA	0%	29%	100%	0%	0%	0%	0%	100%
BA	-	7	4	-	-	-	-	11
Total Inventory	-	2	4	5	-	-	-	11
SJA Inventory	29%		225%		#DIV/0!			

L15A ULTRASOUND TECH



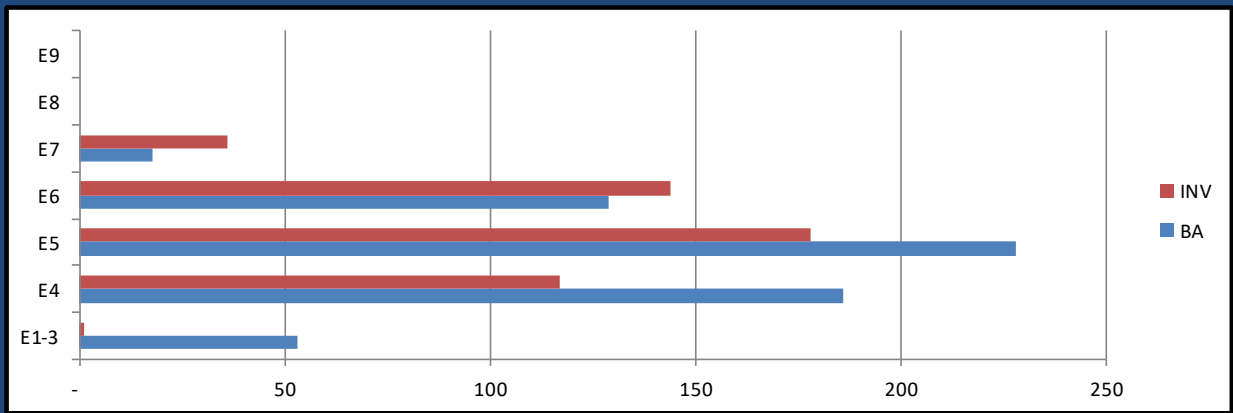
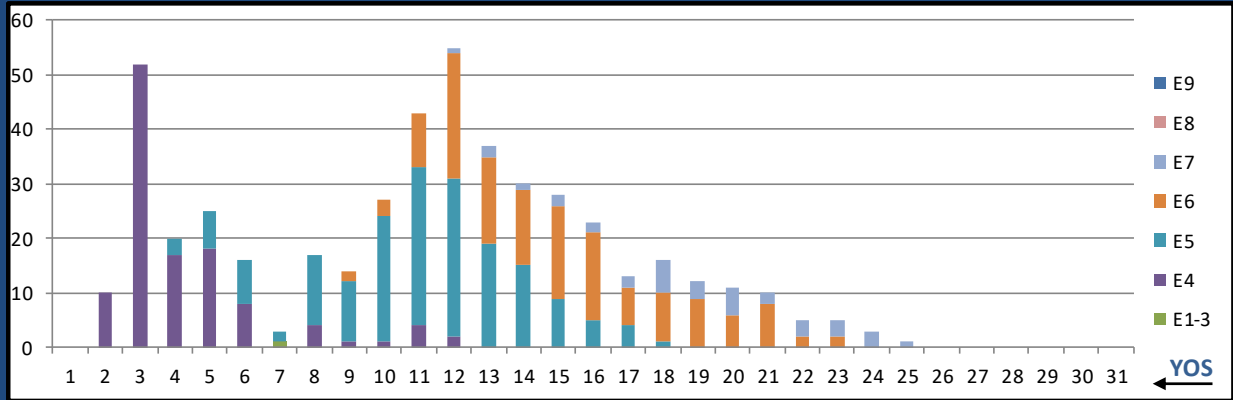
	E1-3	E4	E5	E6	E7	E8	E9	Total
%INV to BA	0%	33%	117%	350%	0%	0%	0%	125%
BA	1	3	6	2	-	-	-	12
Total Inventory	-	1	7	7	-	-	-	15
SJA Inventory	25%		175%		#DIV/0!			

L16A MAMMO TECH



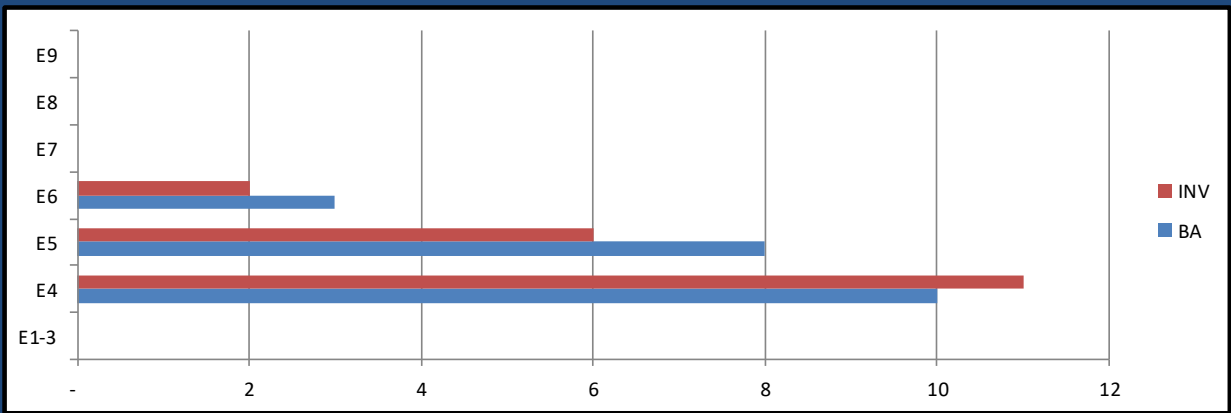
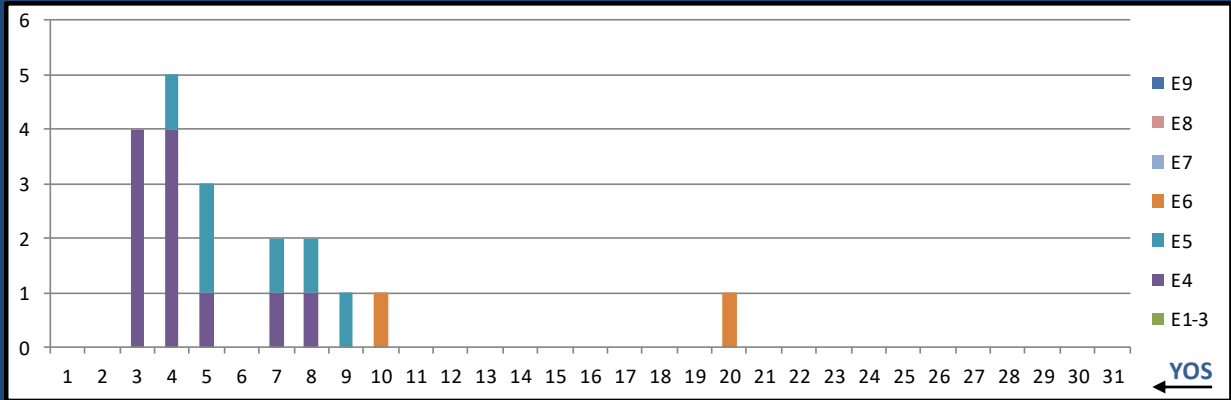
	E1-3	E4	E5	E6	E7	E8	E9	Total
%INV to BA	0%	0%	125%	0%	0%	0%	0%	70%
BA	-	5	4	1	-	-	-	10
Total Inventory	-	-	5	-	2	-	-	7
SJA Inventory	0%		100%		#DIV/0!			

L17A ADV X-RAY TECH



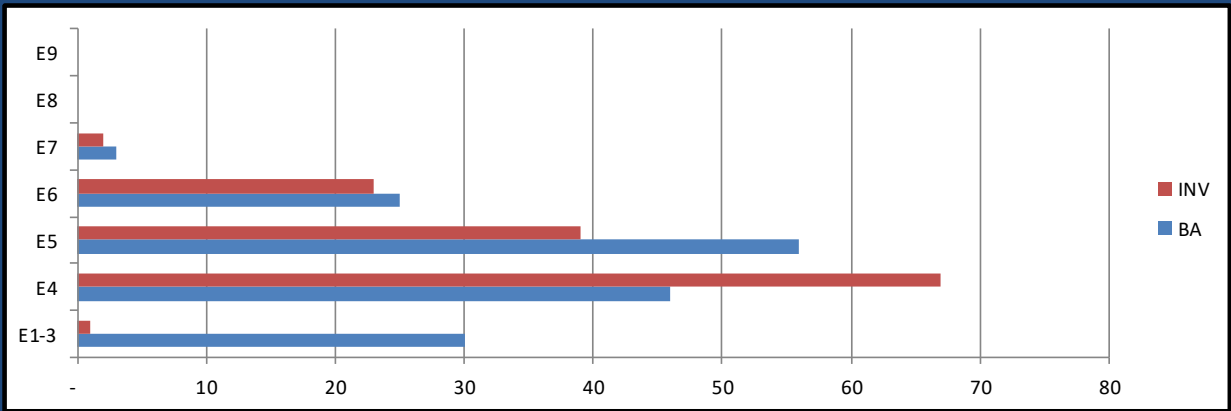
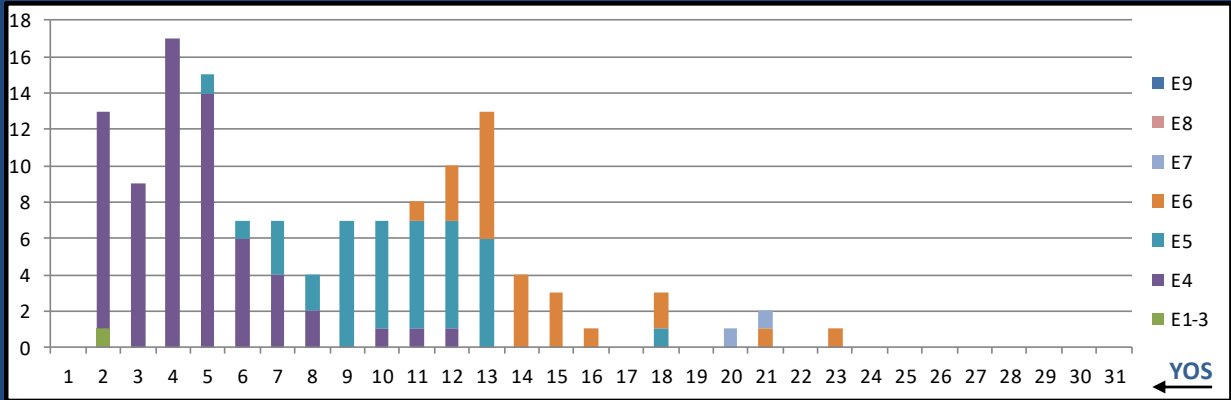
	E1-3	E4	E5	E6	E7	E8	E9	Total
%INV to BA	2%	63%	78%	112%	200%	0%	0%	78%
BA	53	186	228	129	18	-	-	614
Total Inventory	1	117	178	144	36	-	-	476
SJA Inventory	49%		90%		200%			

L18A END TECH



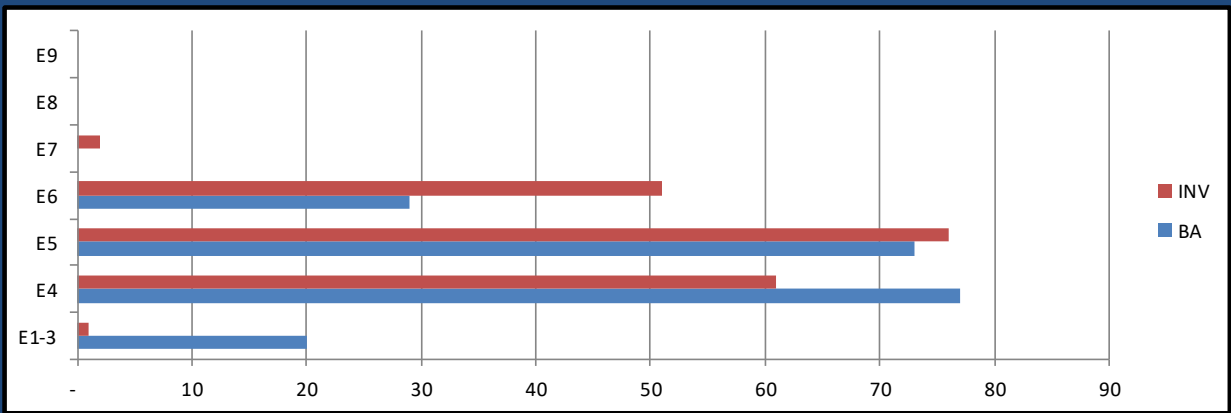
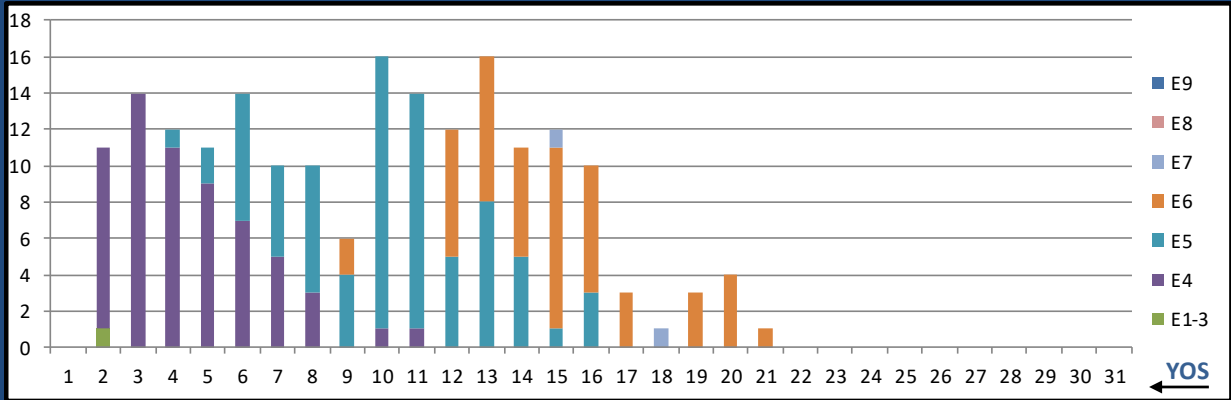
	E1-3	E4	E5	E6	E7	E8	E9	Total
%INV to BA	0%	110%	75%	67%	0%	0%	0%	90%
BA	-	10	8	3	-	-	-	21
Total Inventory	-	11	6	2	-	-	-	19
SJA Inventory	110%		73%			#DIV/0!		

L19A OPTICIAN



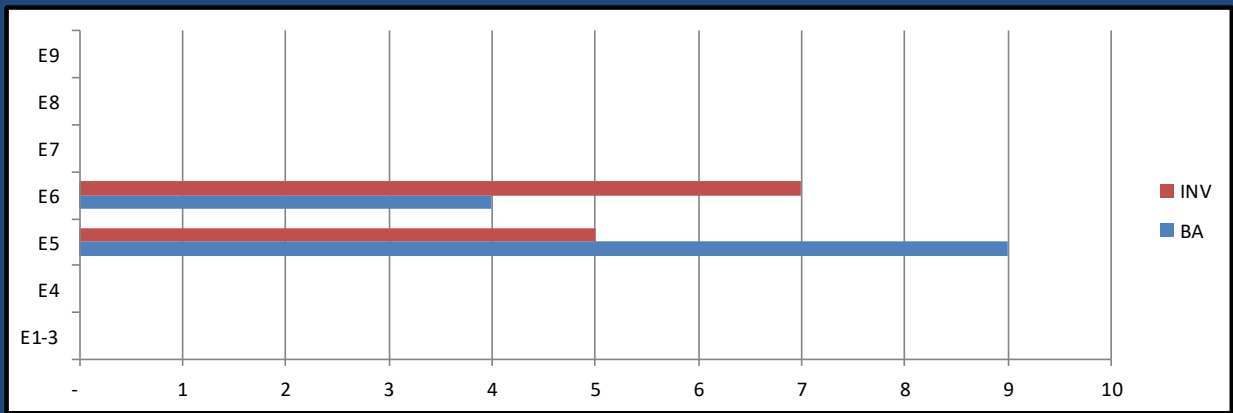
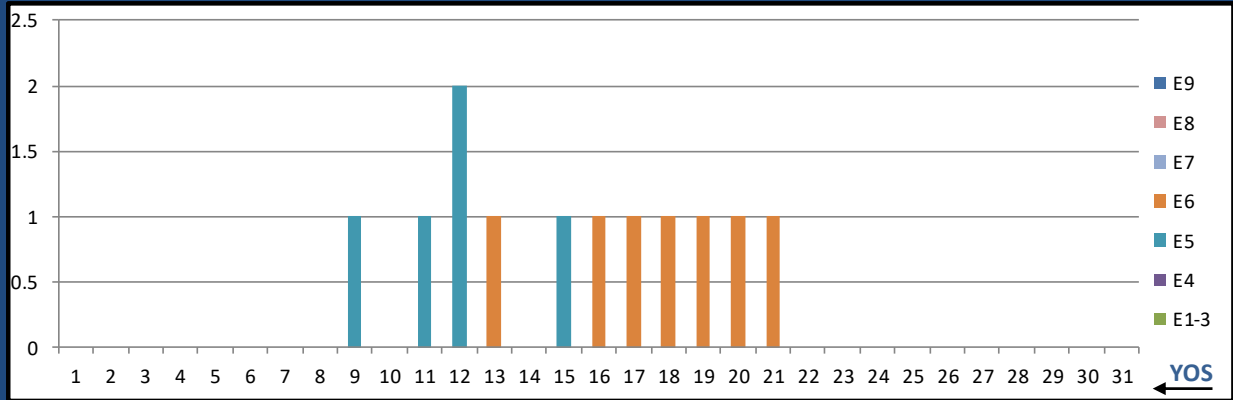
	E1-3	E4	E5	E6	E7	E8	E9	Total
%INV to BA	3%	146%	70%	92%	67%	0%	0%	83%
BA	30	46	56	25	3	-	-	160
Total Inventory	1	67	39	23	2	-	-	132
SJA Inventory	89%		77%		67%			

L20A PT TECH



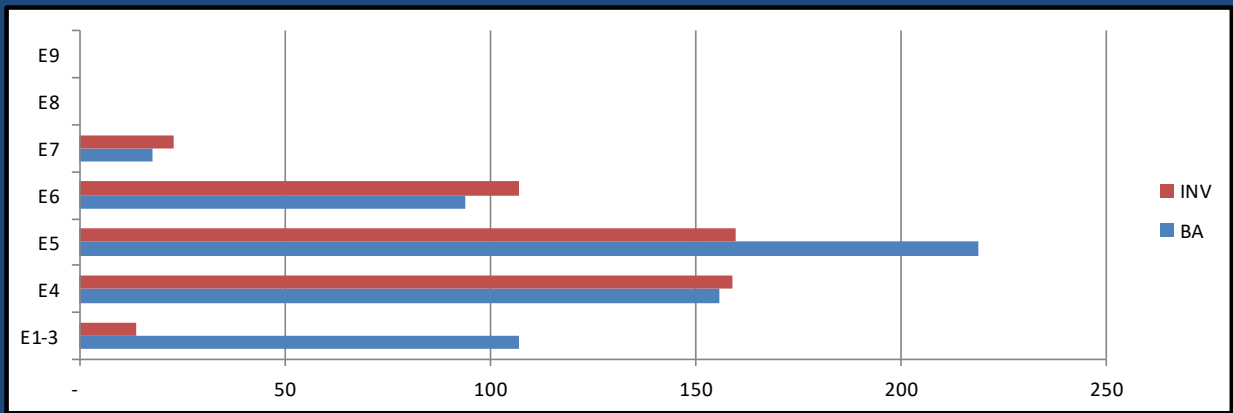
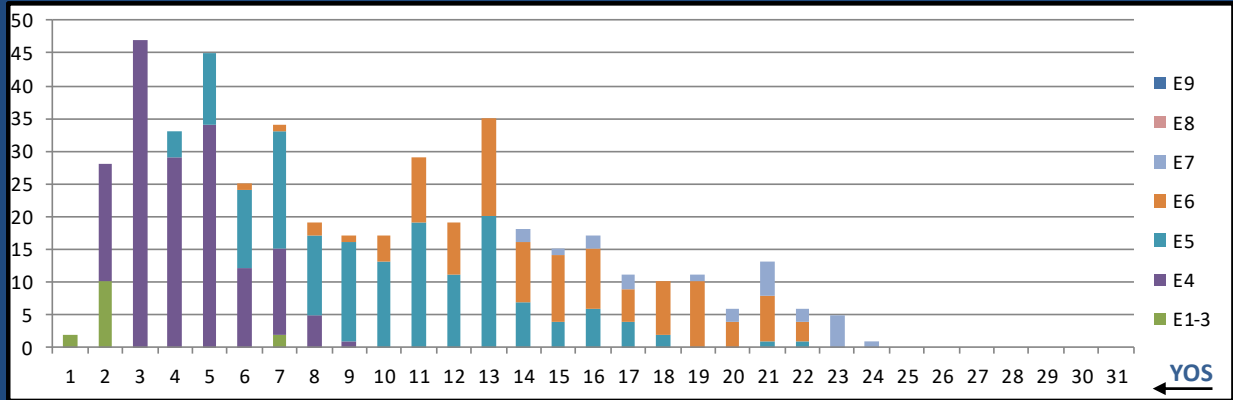
	E1-3	E4	E5	E6	E7	E8	E9	Total
%INV to BA	5%	79%	104%	176%	0%	0%	0%	96%
BA	20	77	73	29	-	-	-	199
Total Inventory	1	61	76	51	2	-	-	191
SJA Inventory	64%		125%		#DIV/0!			

L21A OT TECH



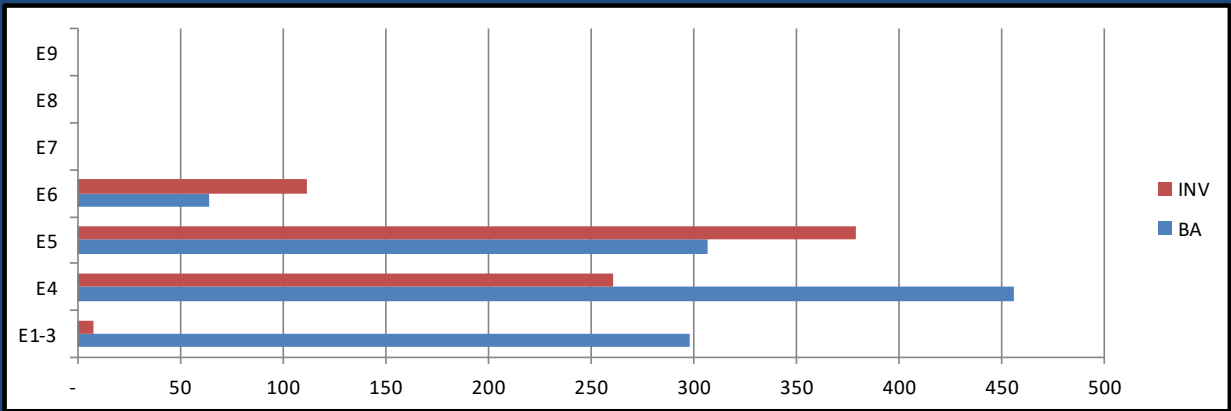
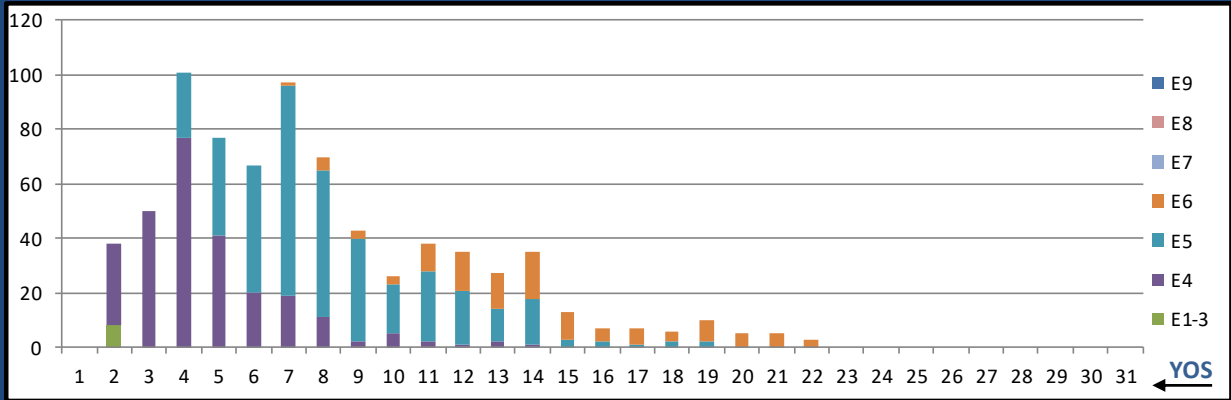
	E1-3	E4	E5	E6	E7	E8	E9	Total
%INV to BA	0%	0%	56%	175%	0%	0%	0%	92%
BA	-	-	9	4	-	-	-	13
Total Inventory	-	-	5	7	-	-	-	12
SJA Inventory	#DIV/0!		92%		#DIV/0!			

L22A PHARM TECH



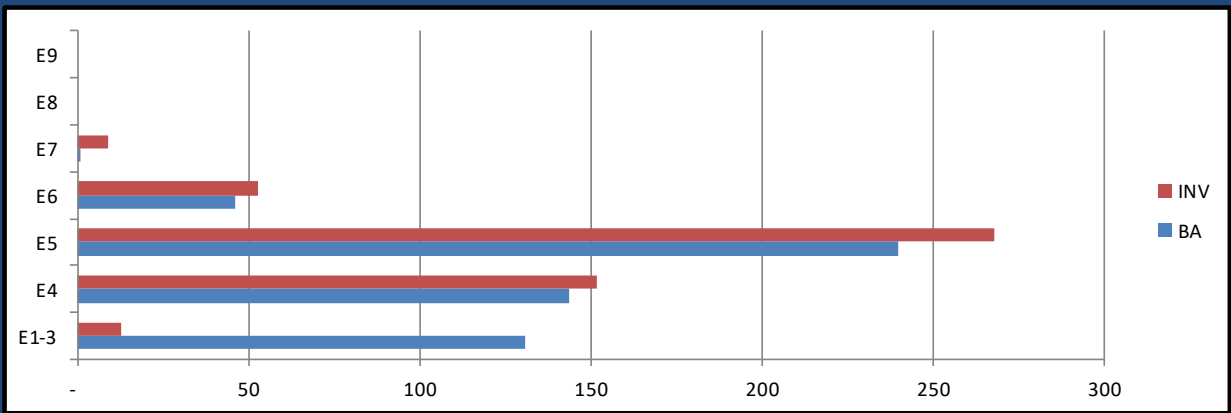
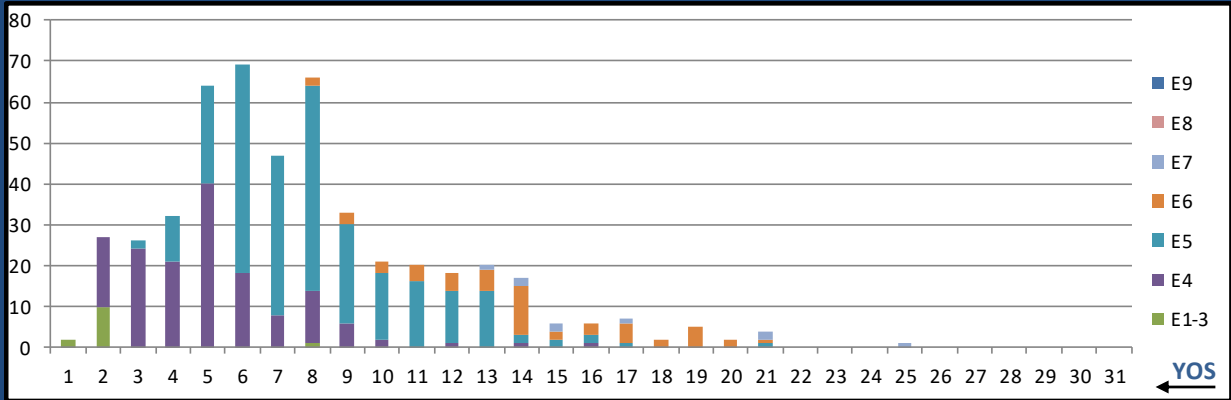
	E1-3	E4	E5	E6	E7	E8	E9	Total
%INV to BA	13%	102%	73%	114%	128%	0%	0%	78%
BA	107	156	219	94	18	-	-	594
Total Inventory	14	159	160	107	23	-	-	463
SJA Inventory	66%		85%		128%			

L23A SURG TECH



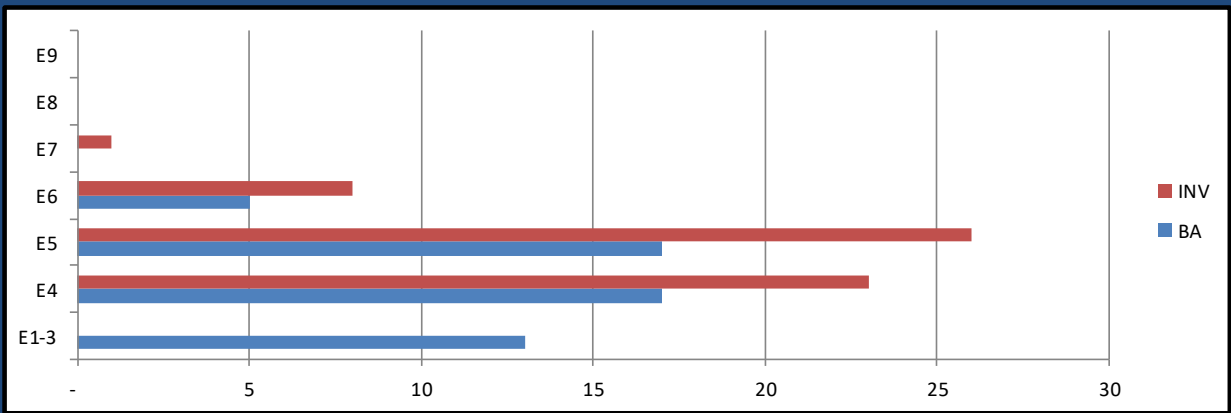
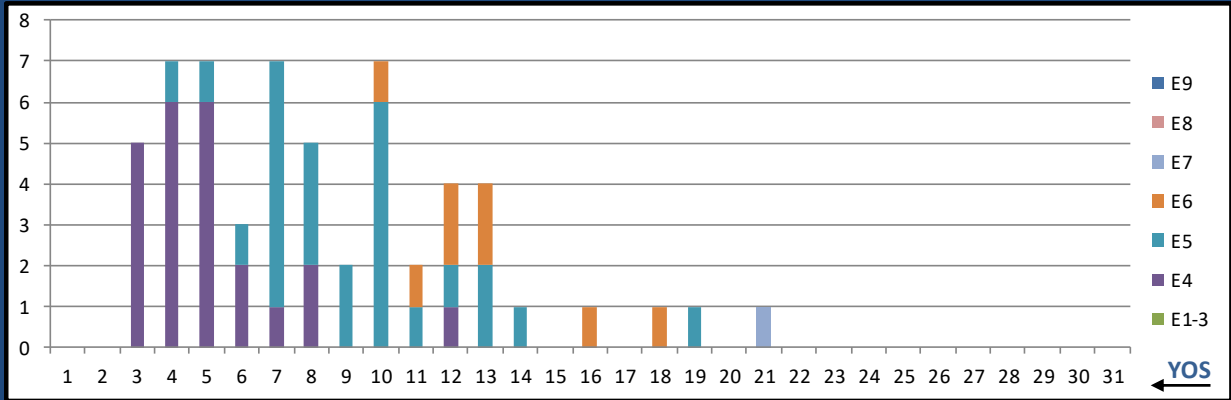
	E1-3	E4	E5	E6	E7	E8	E9	Total
%INV to BA	3%	57%	123%	175%	0%	0%	0%	68%
BA	298	456	307	64	-	-	-	1,125
Total Inventory	8	261	379	112	-	-	-	760
SJA Inventory	36%		132%		#DIV/0!			

L24A BEHAV HLTH



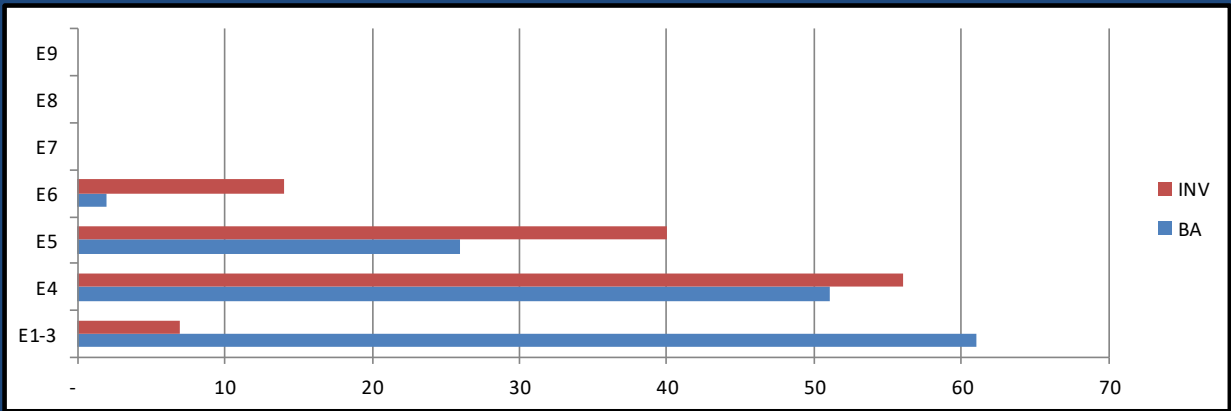
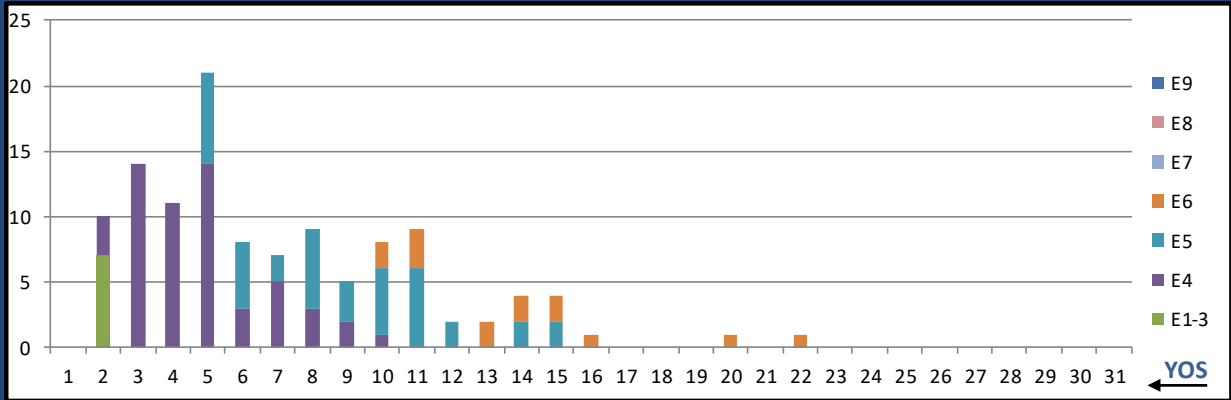
	E1-3	E4	E5	E6	E7	E8	E9	Total
%INV to BA	10%	106%	112%	115%	900%	0%	0%	88%
BA	131	144	240	46	1	-	-	562
Total Inventory	13	152	268	53	9	-	-	495
SJA Inventory	60%		112%		900%			

L25A UROLOGY TECH



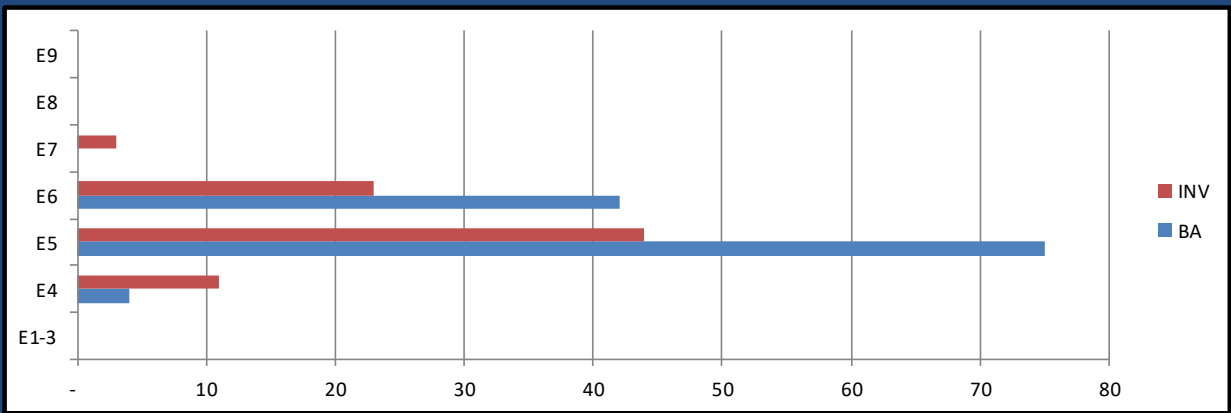
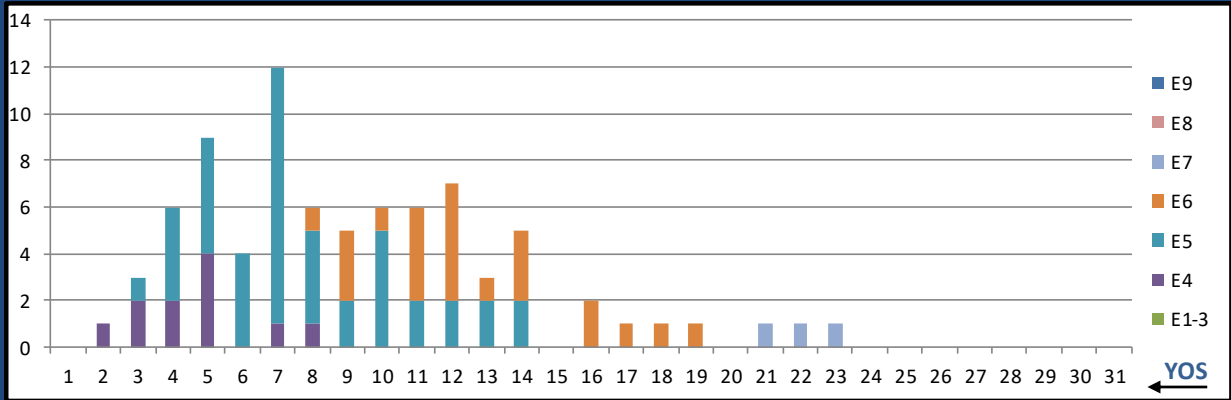
	E1-3	E4	E5	E6	E7	E8	E9	Total
%INV to BA	0%	135%	153%	160%	0%	0%	0%	112%
BA	13	17	17	5	-	-	-	52
Total Inventory	-	23	26	8	1	-	-	58
SJA Inventory	77%	155%		#DIV/0!				

L26A ORTHOPEDIC TECH



	E1-3	E4	E5	E6	E7	E8	E9	Total
%INV to BA	11%	110%	154%	700%	0%	0%	0%	84%
BA	61	51	26	2	-	-	-	140
Total Inventory	7	56	40	14	-	-	-	117
SJA Inventory	56%		193%		#DIV/0!			

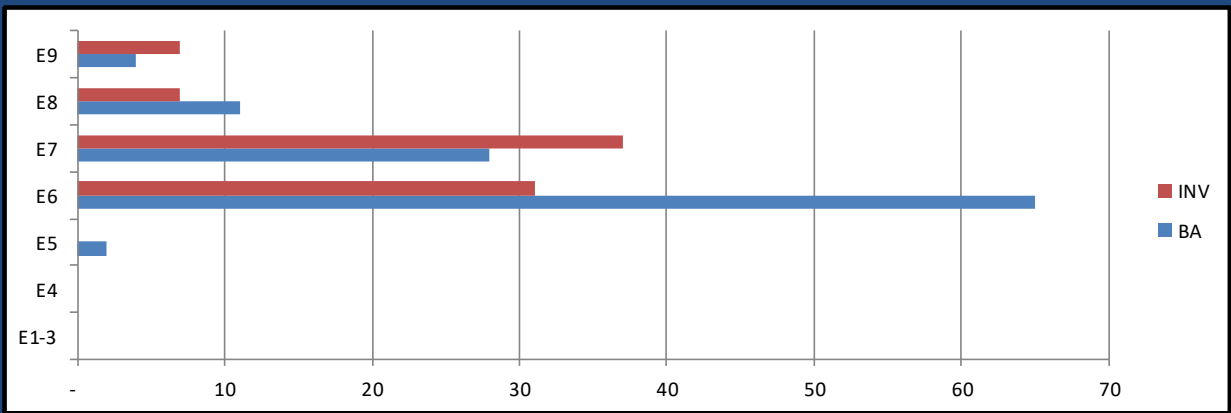
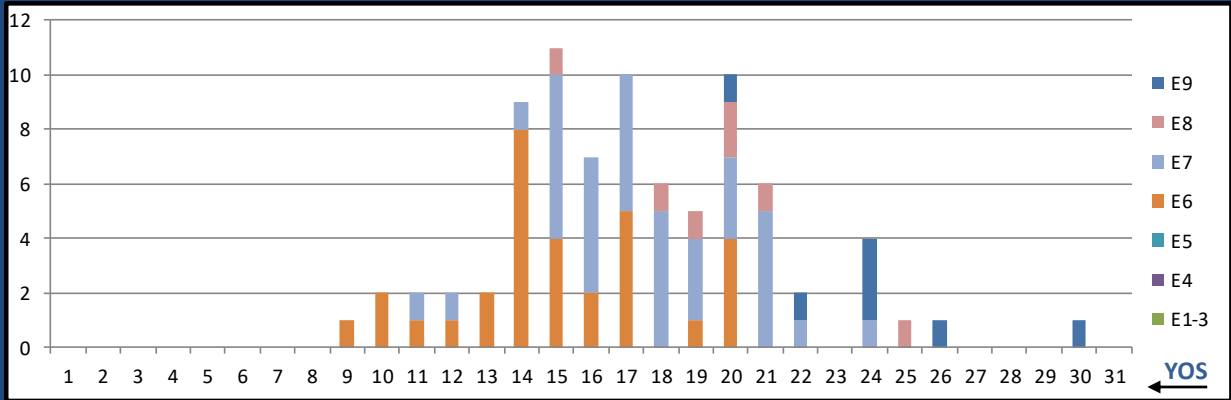
L27A DIVE MED TECH



	E1-3	E4	E5	E6	E7	E8	E9	Total
%INV to BA	0%	275%	59%	55%	0%	0%	0%	67%
BA	-	4	75	42	-	-	-	121
Total Inventory	-	11	44	23	3	-	-	81
SJA Inventory	275%		57%		#DIV/0!			

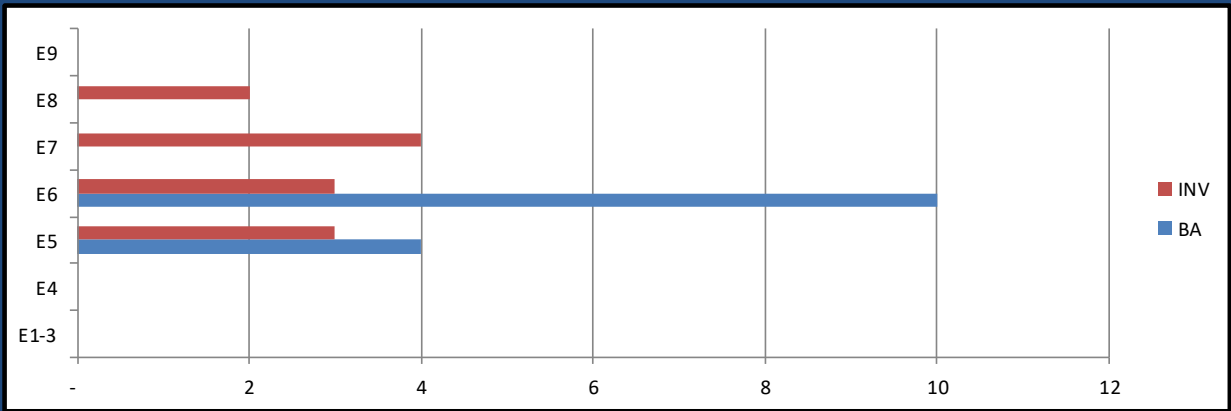
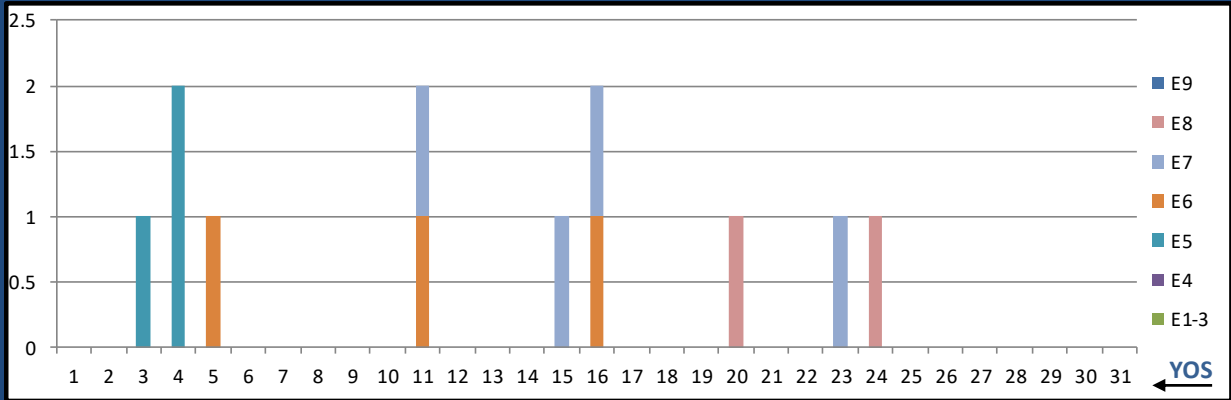
JULY 2024 HM MANNING SNAPSHOT

L28A DIVE IDC



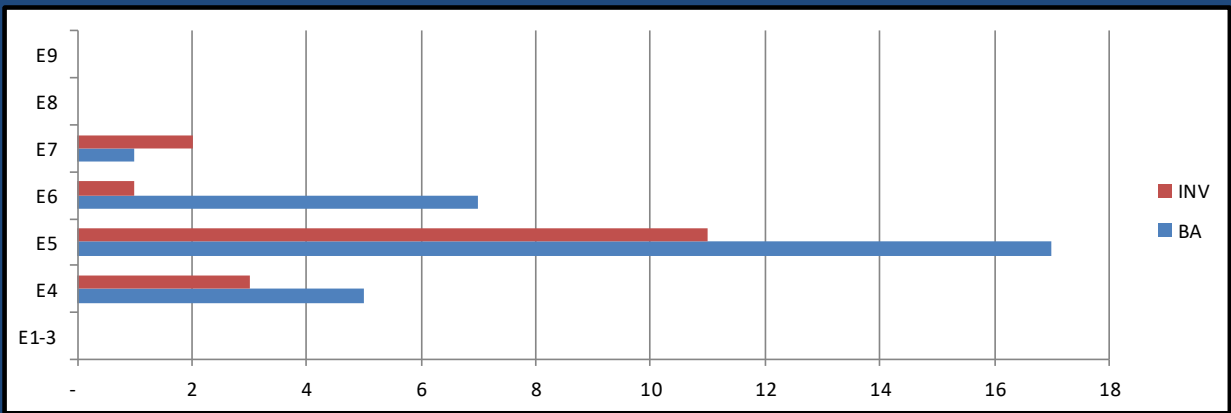
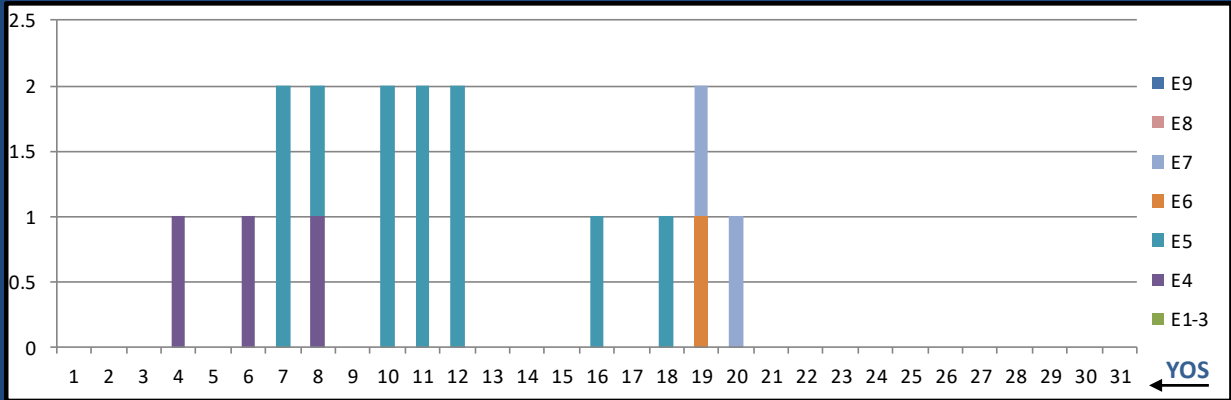
	E1-3	E4	E5	E6	E7	E8	E9	Total
%INV to BA	0%	0%	0%	48%	132%	64%	175%	75%
BA	-	-	2	65	28	11	4	110
Total Inventory	-	-	-	31	37	7	7	82
SJA Inventory	#DIV/0!		46%		119%			

L29A MORTICIAN



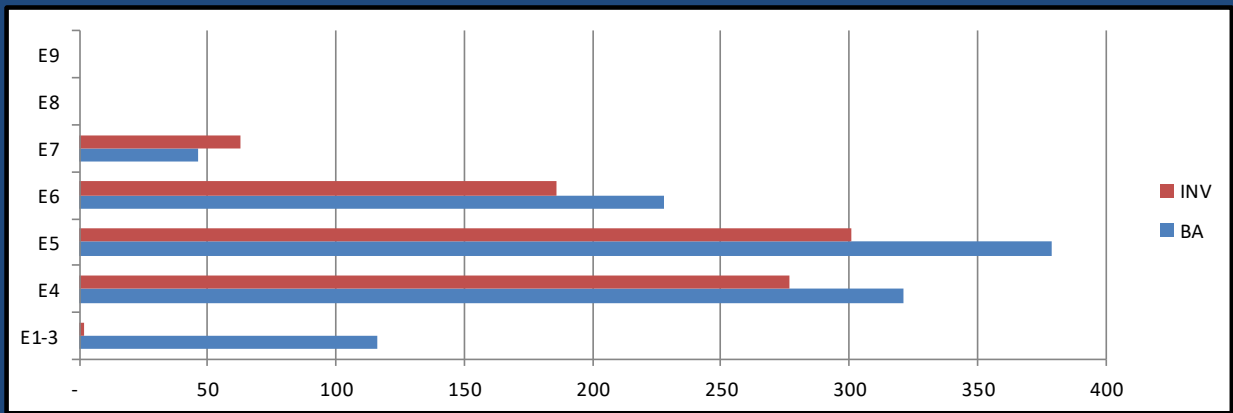
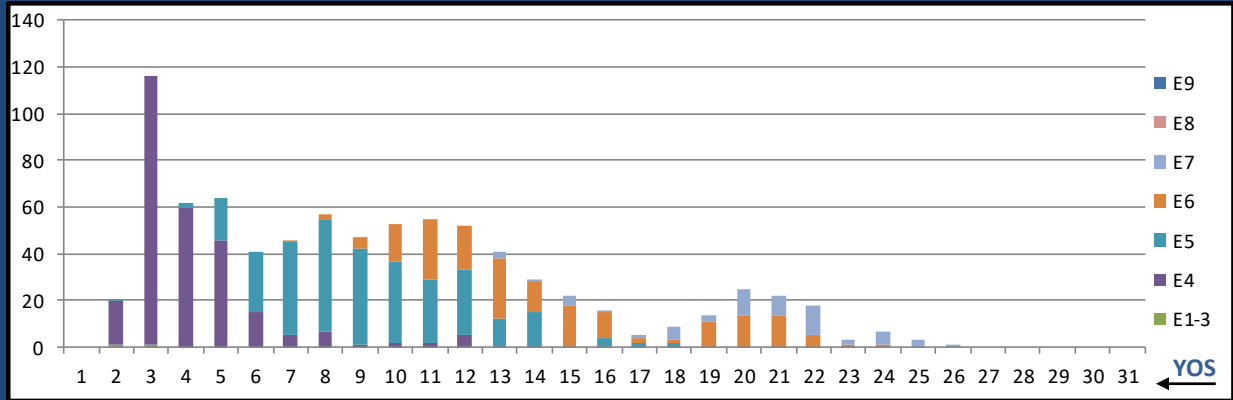
	E1-3	E4	E5	E6	E7	E8	E9	Total
%INV to BA	0%	0%	75%	30%	0%	0%	0%	86%
BA	-	-	4	10	-	-	-	14
Total Inventory	-	-	3	3	4	2	-	12
SJA Inventory	#DIV/0!		43%		#DIV/0!			

L30A HISTO TECH



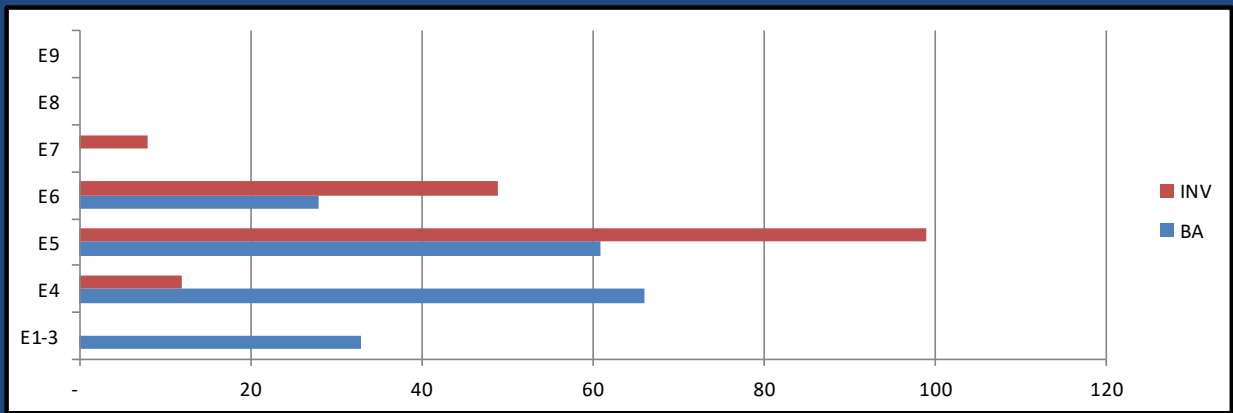
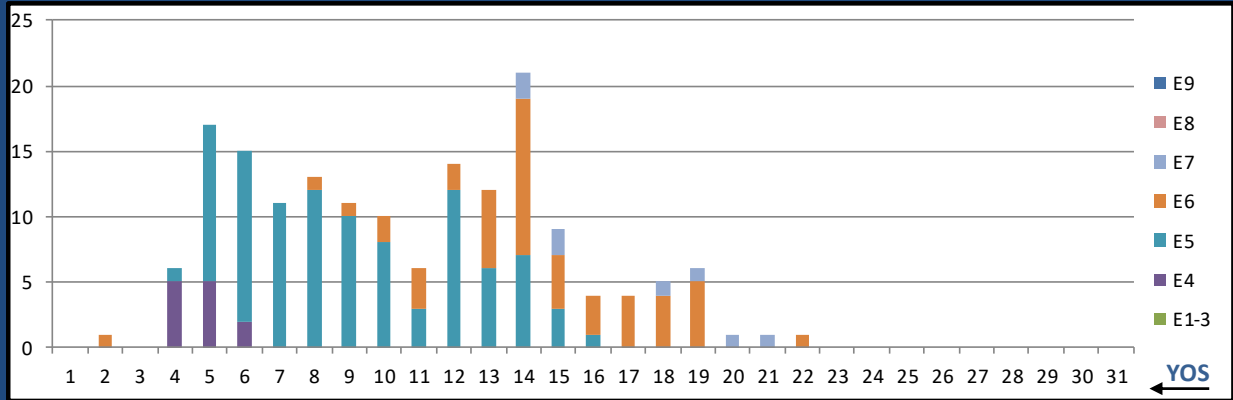
	E1-3	E4	E5	E6	E7	E8	E9	Total
%INV to BA	0%	60%	65%	14%	200%	0%	0%	57%
BA	-	5	17	7	1	-	-	30
Total Inventory	-	3	11	1	2	-	-	17
SJA Inventory	60%		50%		200%			

L31A MED LAB TECH



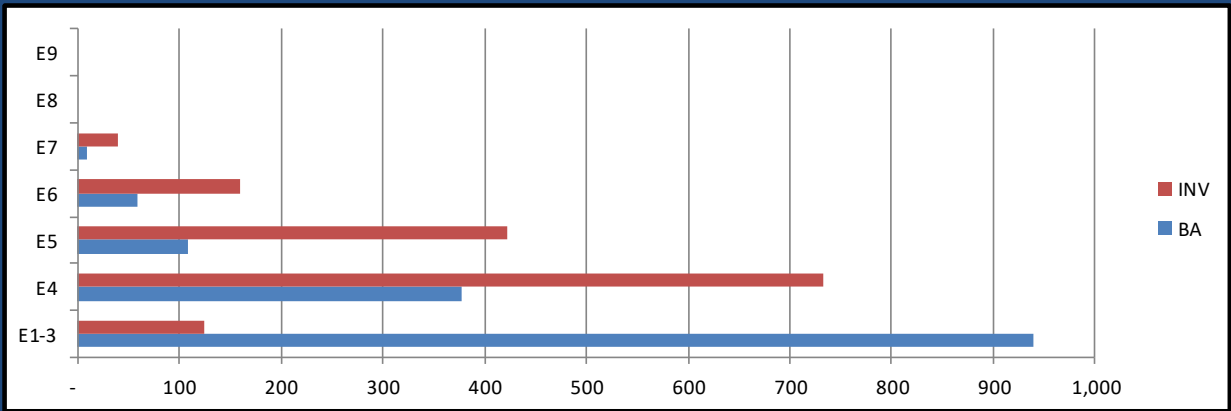
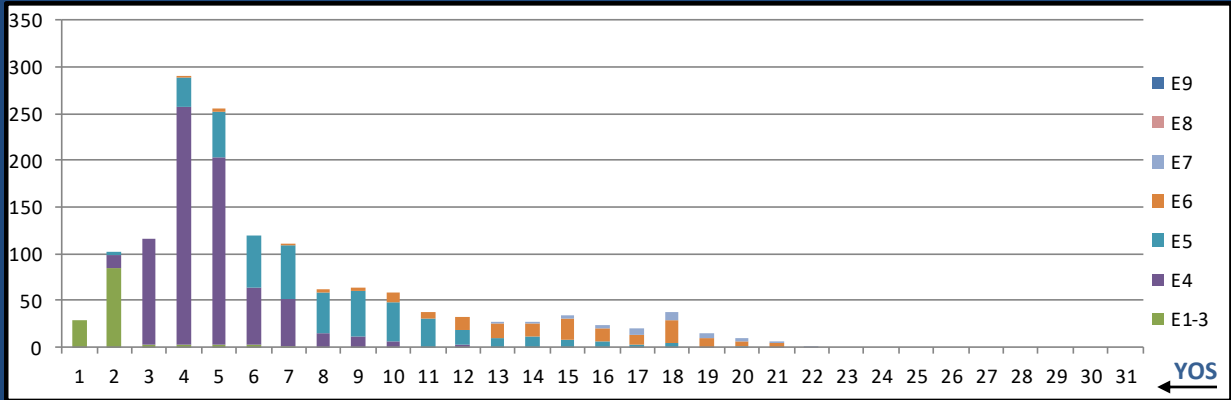
	E1-3	E4	E5	E6	E7	E8	E9	Total
%INV to BA	2%	86%	79%	82%	137%	0%	0%	76%
BA	116	321	379	228	46	-	-	1,090
Total Inventory	2	277	301	186	63	-	-	829
SJA Inventory	64%		80%		137%			

L32A RESP THER TECH



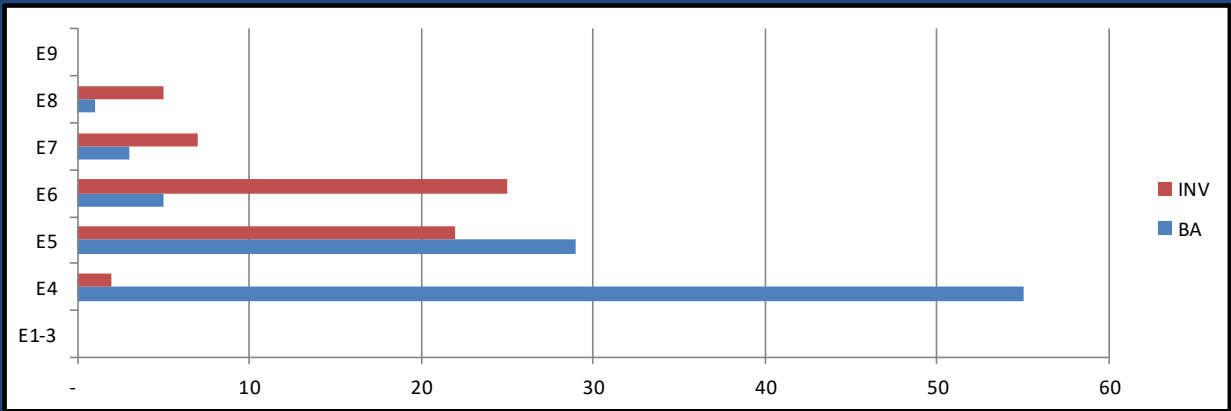
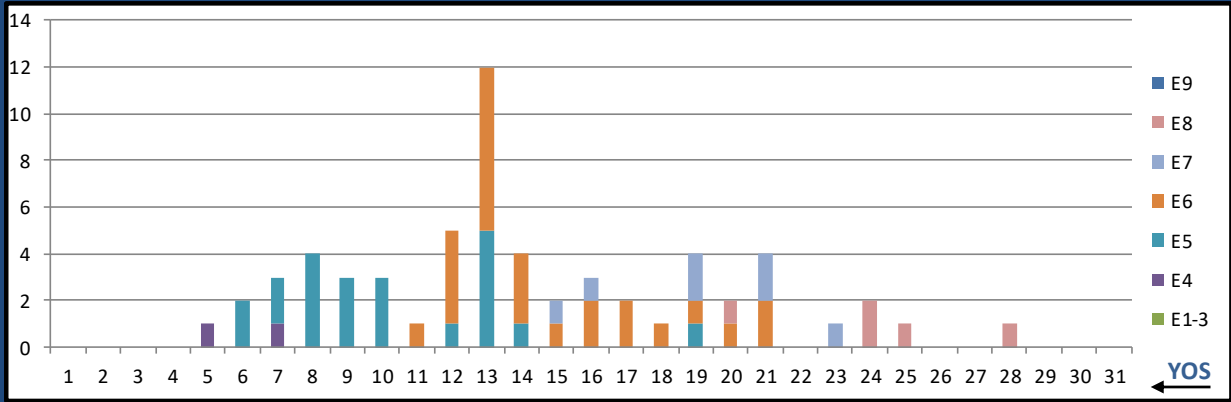
	E1-3	E4	E5	E6	E7	E8	E9	Total
%INV to BA	0%	18%	162%	175%	0%	0%	0%	89%
BA	33	66	61	28	-	-	-	188
Total Inventory	-	12	99	49	8	-	-	168
SJA Inventory	12%		166%			#DIV/0!		

L33A DENTAL ASSISTANT



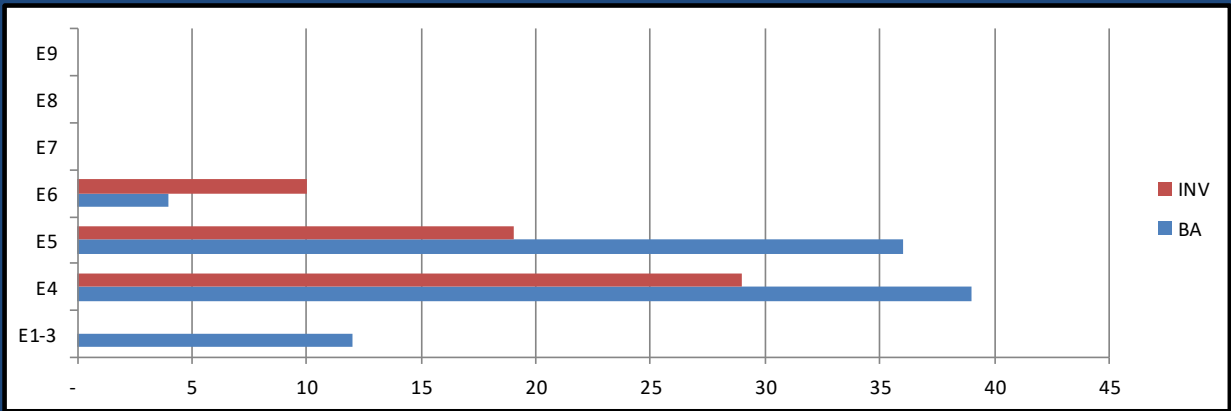
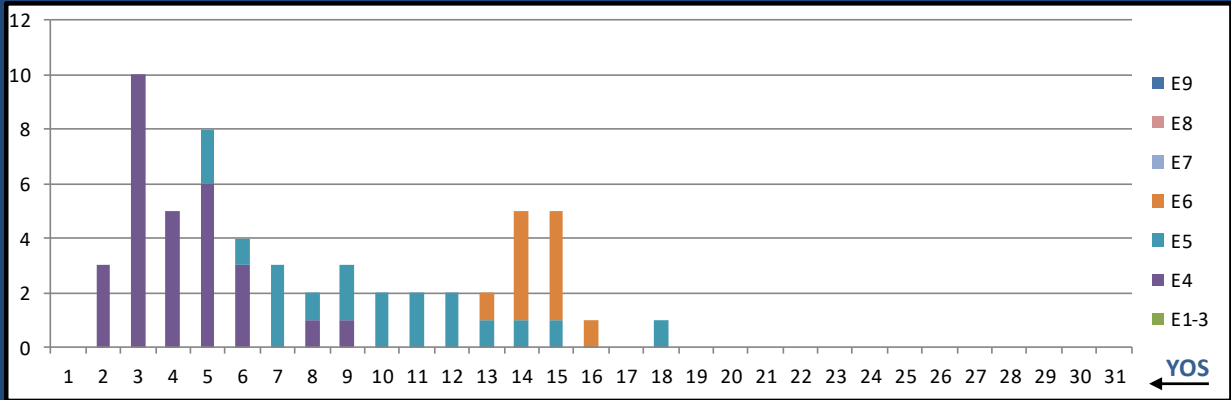
	E1-3	E4	E5	E6	E7	E8	E9	Total
%INV to BA	13%	194%	391%	271%	390%	0%	0%	99%
BA	939	378	108	59	10	-	-	1,494
Total Inventory	124	733	422	160	39	-	-	1,478
SJA Inventory	65%		349%		390%			

L35A DENTAL HYGIENIST



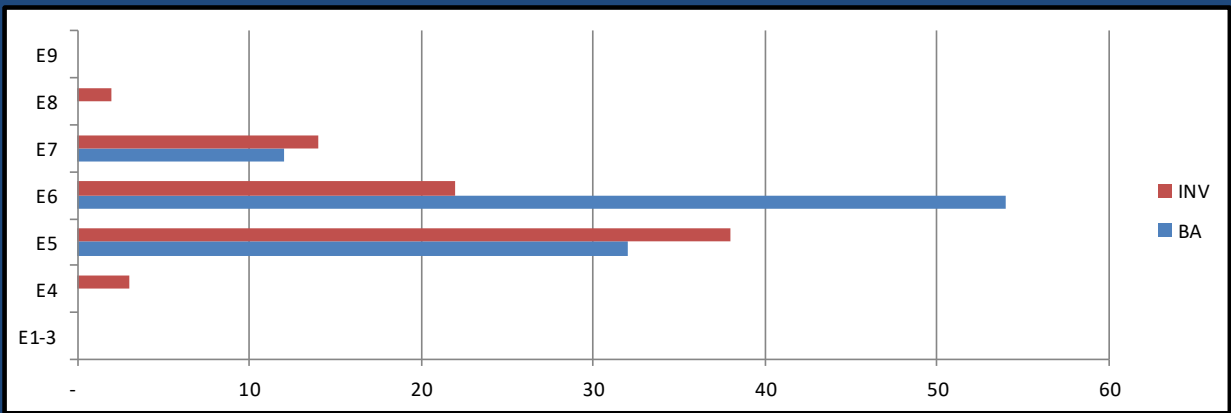
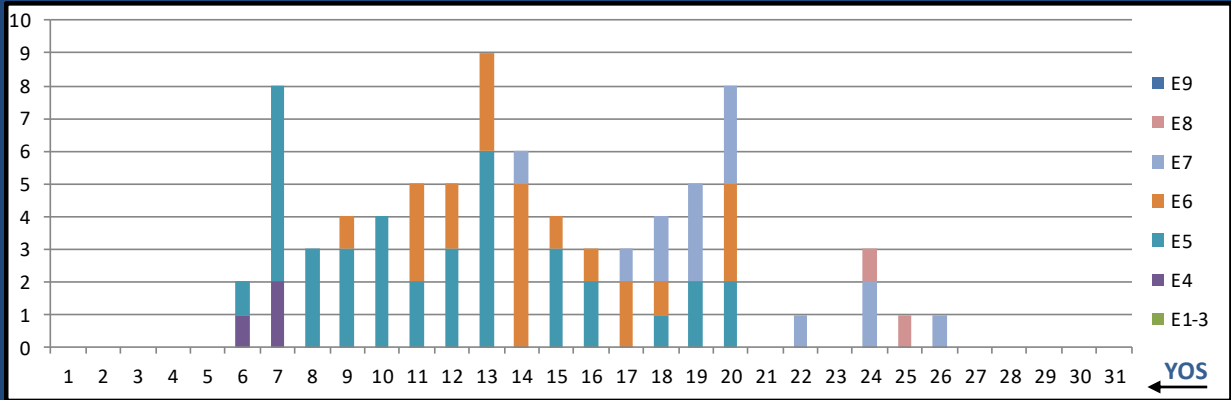
	E1-3	E4	E5	E6	E7	E8	E9	Total
%INV to BA	0%	4%	76%	500%	233%	500%	0%	66%
BA	-	55	29	5	3	1	-	93
Total Inventory	-	2	22	25	7	5	-	61
SJA Inventory	4%		138%		300%			

L36A DENTAL LAB BASIC



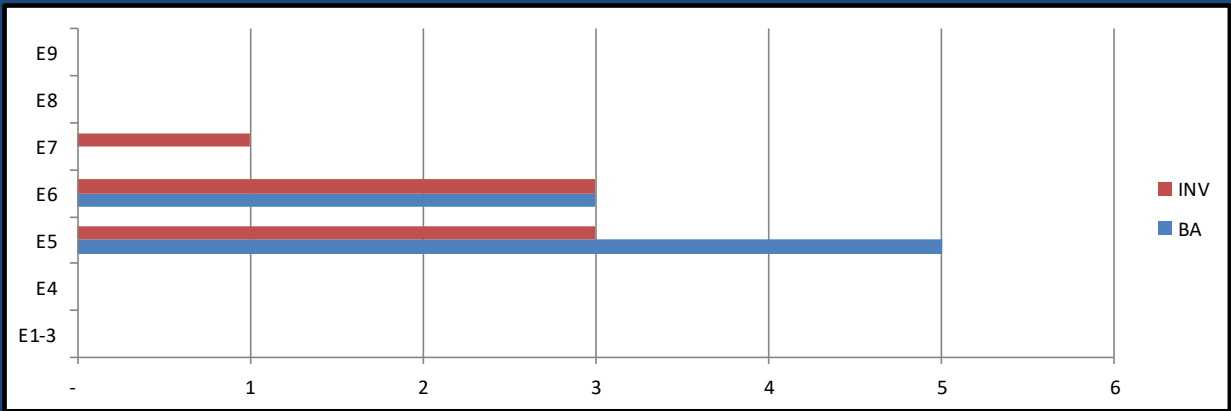
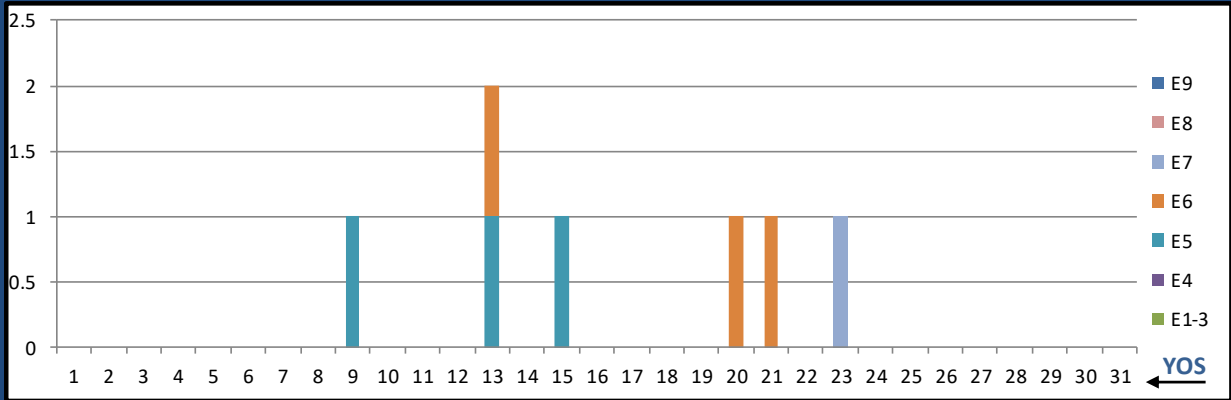
	E1-3	E4	E5	E6	E7	E8	E9	Total
%INV to BA	0%	74%	53%	250%	0%	0%	0%	64%
BA	12	39	36	4	-	-	-	91
Total Inventory	-	29	19	10	-	-	-	58
SJA Inventory	57%		73%		#DIV/0!			

L37A DENTAL LAB ADV



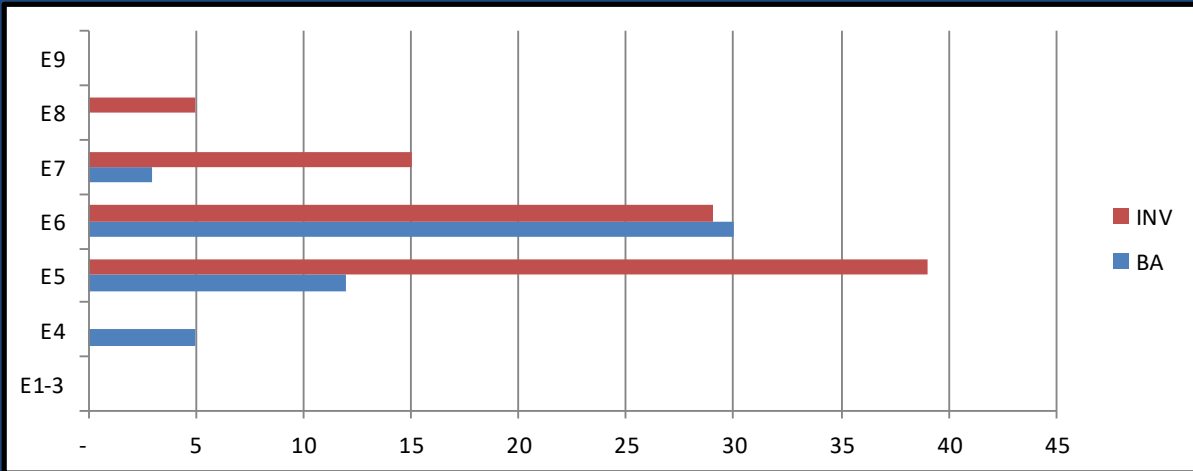
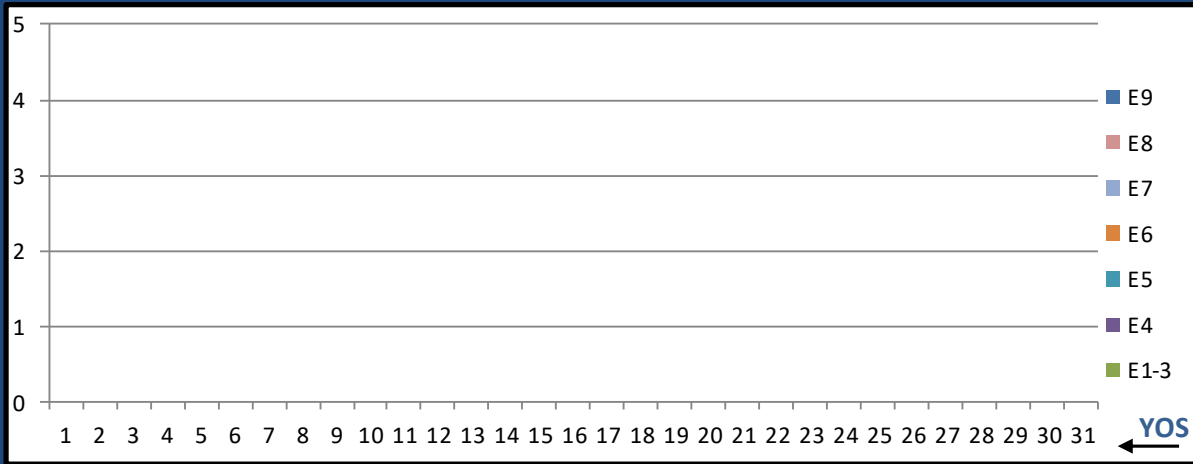
	E1-3	E4	E5	E6	E7	E8	E9	Total
%INV to BA	0%	0%	119%	41%	117%	0%	0%	81%
BA	-	-	32	54	12	-	-	98
Total Inventory	-	3	38	22	14	2	-	79
SJA Inventory	#DIV/0!		70%		133%			

L38A DENTAL ORALMAX



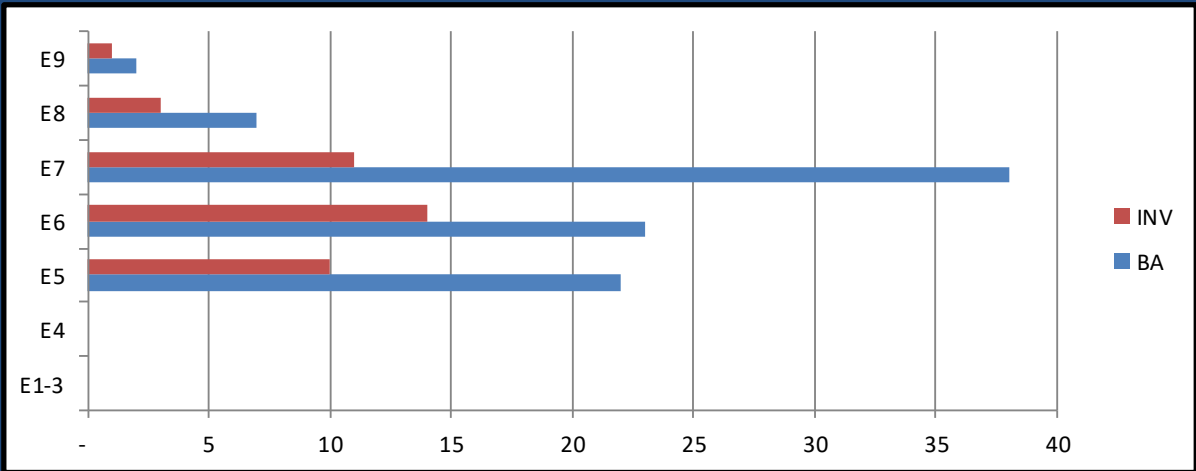
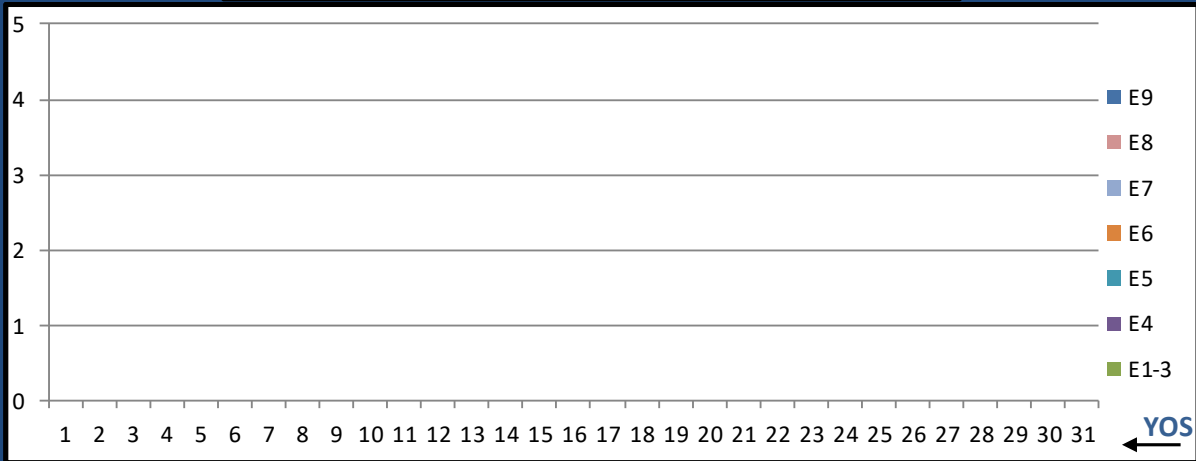
	E1-3	E4	E5	E6	E7	E8	E9	Total
%INV to BA	0%	0%	60%	100%	0%	0%	0%	88%
BA	-	-	5	3	-	-	-	8
Total Inventory	-	-	3	3	1	-	-	7
SJA Inventory	#DIV/0!		75%		#DIV/0!			

810B DRUG & ALCOHOL COUNSELOR INTERN



	E1-3	E4	E5	E6	E7	E8	E9	Total
%INV to BA	0%	0%	325%	97%	500%	0%	0%	176%
BA	-	5	12	30	3	-	-	50
Total Inventory	-	-	39	29	15	5	-	88
SJA Inventory	0%		162%		667%			

810C DRUG & ALCOHOL COUNSELOR



	E1-3	E4	E5	E6	E7	E8	E9	Total
%INV to BA	0%	0%	45%	61%	29%	43%	50%	42%
BA	-	-	22	23	38	7	2	92
Total Inventory	-	-	10	14	11	3	1	39
SJA Inventory	#DIV/0!		53%		32%			

JULY 2024 HM MANNING SNAPSHOT

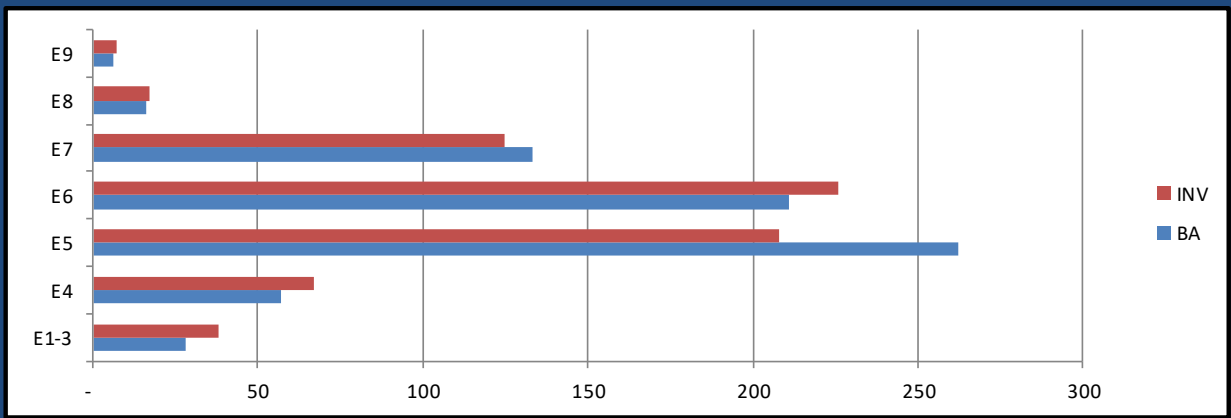
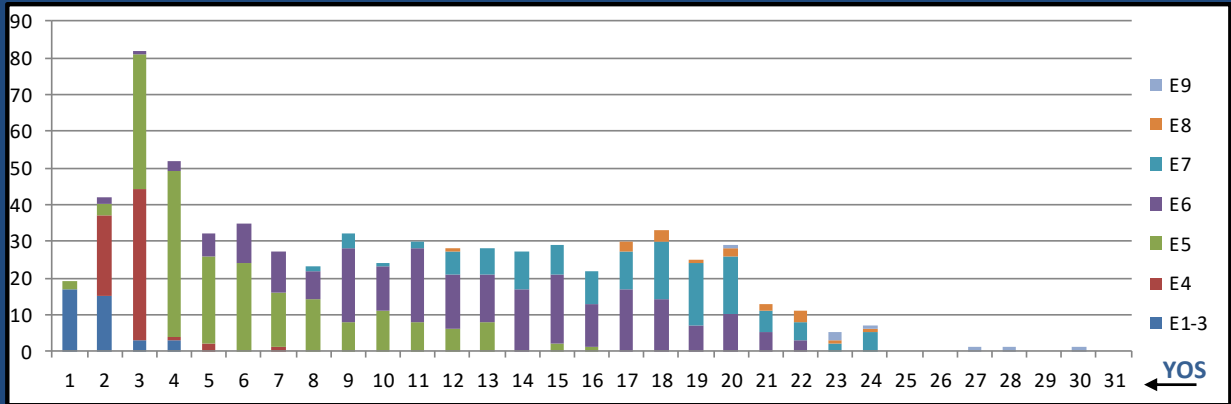
HM TAR MANNING 9 JUL 2024	NEC	BA	INV WITH PRIMARY NEC	INV/BA PRIMARY NEC	TOTAL INV W/NEC	TOTAL NEC INV/BA
FIELD MED TECH	L03A	181	234	129.3%	278	153.6%
AERO MED TECH	L04A	41	85	207.3%	86	209.8%
SURFACE IDC	L10A	25	25	100.0%	25	100.0%
PREV MED TECH	L12A	1	3	300.0%	3	300.0%
PHARM TECH	L22A	0	2	#DIV/0!	2	#DIV/0!
DENTAL ASSISTANT	L33A	0	1	#DIV/0!	1	#DIV/0!
DRUG & ALCOHOL COUNS. INTERN	810B	1	1	100.0%	0	0.0%

General Duty HM	0000/L03A	646	573	88.7%
NECS (less L03A)	NEC	67	115	171.6%
NOS L500 TOTAL	ALL	713	688	96.5%

Critically Undermanned <85% Undermanned 85%-94% Healthy 95%-104% Overmanned >105%

JULY 2024 HM MANNING SNAPSHOT

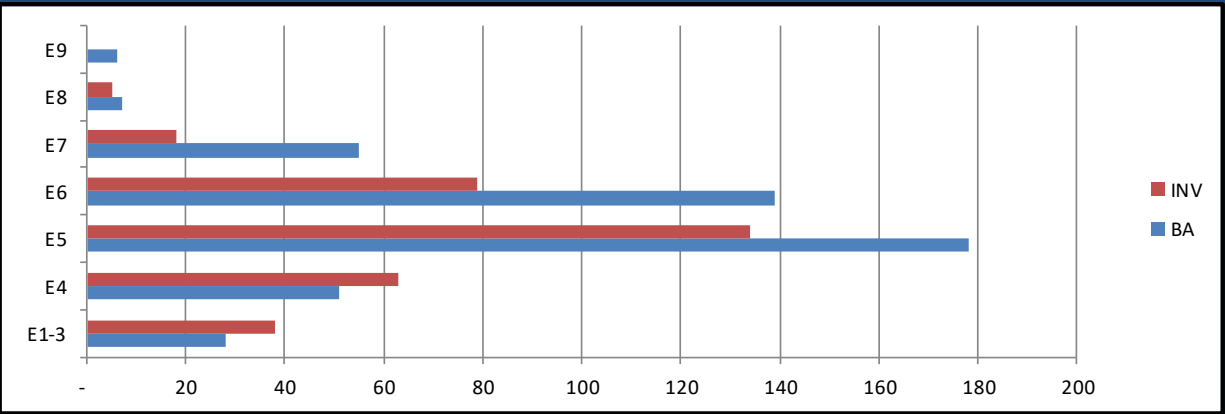
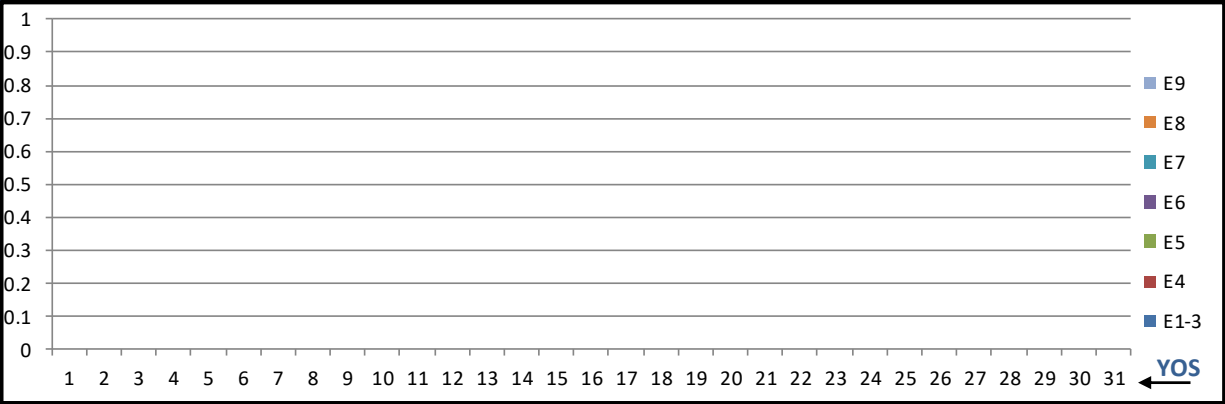
TAR ALL



	E1-3	E4	E5	E6	E7	E8	E9	Total
%INV to BA	136%	118%	79%	107%	94%	106%	117%	96%
BA	28	57	262	211	133	16	6	713
Total Inventory	38	67	208	226	125	17	7	688
SJA Inventory	124%	92%	96%					

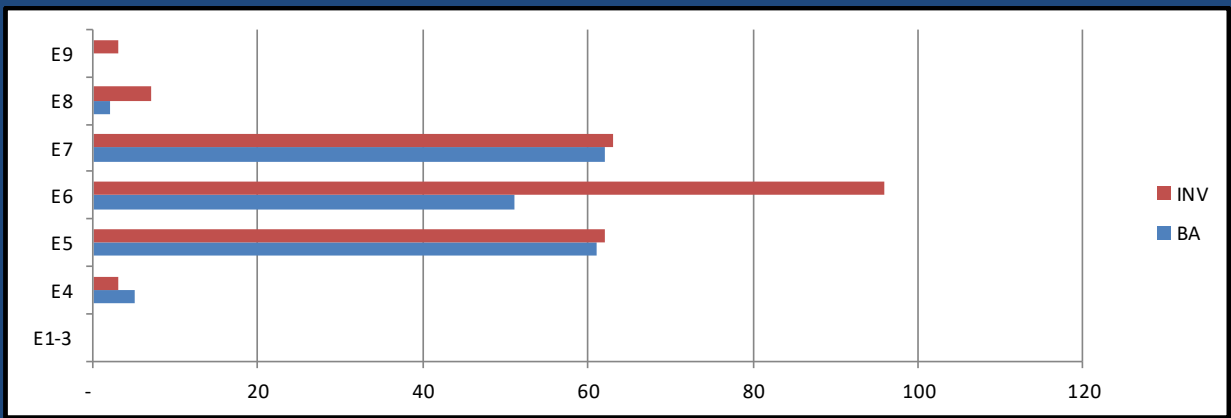
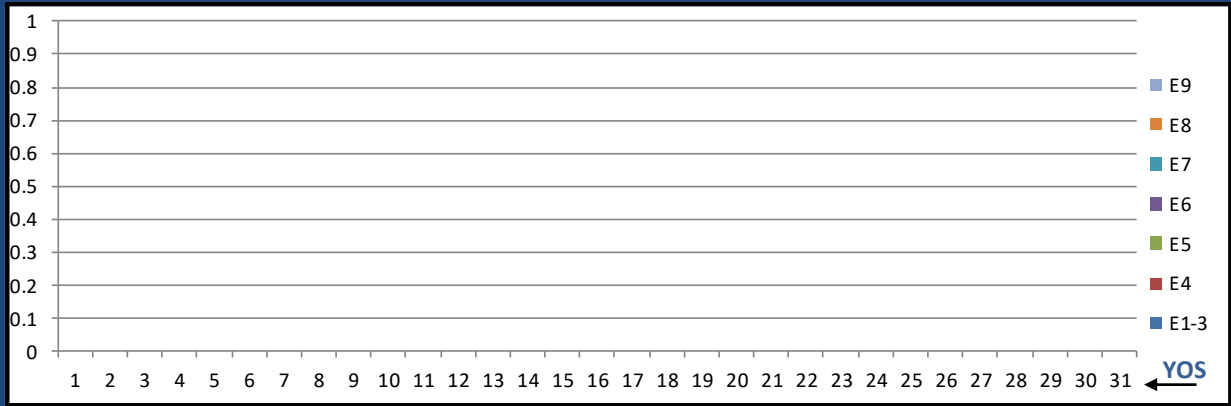
JULY 2024 HM MANNING SNAPSHOT

TAR 0000



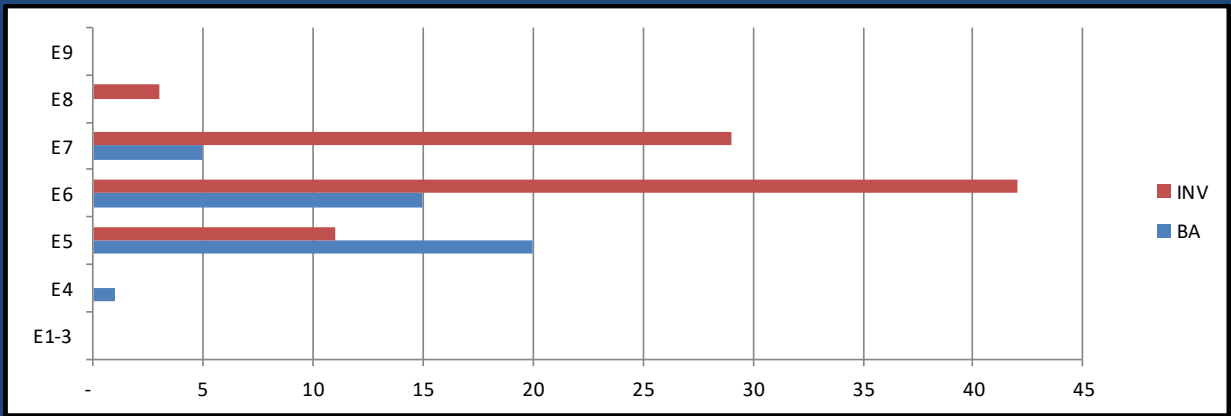
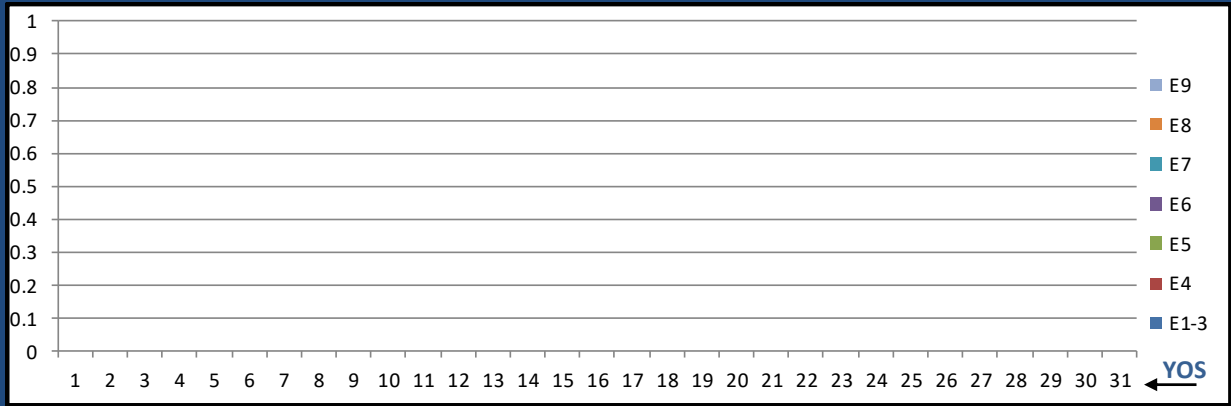
	E1-3	E4	E5	E6	E7	E8	E9	Total
%INV to BA	136%	124%	75%	57%	33%	71%	0%	73%
BA	28	51	178	139	55	7	6	464
Total Inventory	38	63	134	79	18	5	-	337
SJA Inventory	128%		67%		34%			

TAR L03A FLD MED TECH



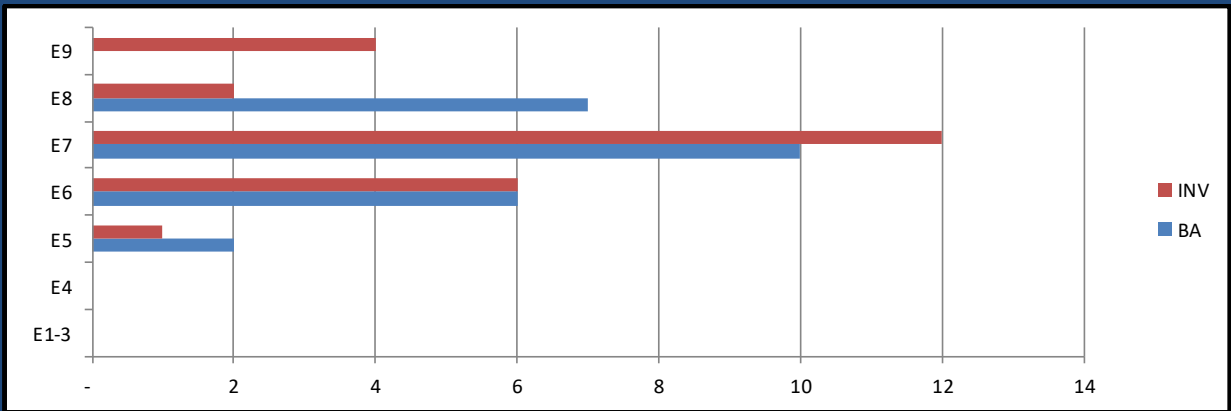
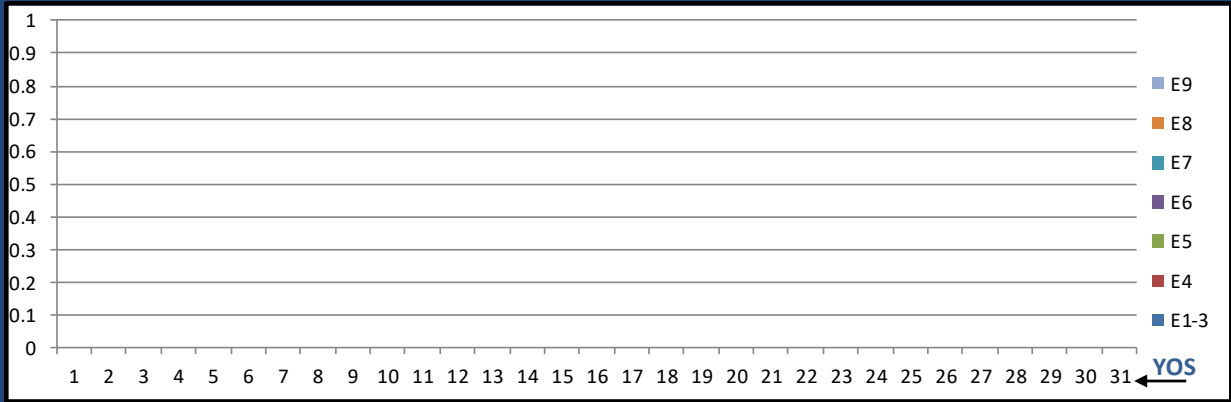
	E1-3	E4	E5	E6	E7	E8	E9	Total
%INV to BA	0%	60%	102%	188%	102%	350%	0%	129%
BA	-	5	61	51	62	2	-	181
Total Inventory	-	3	62	96	63	7	3	234
SJA Inventory		60%		141%		114%		

TAR L04A AERO MED TECH



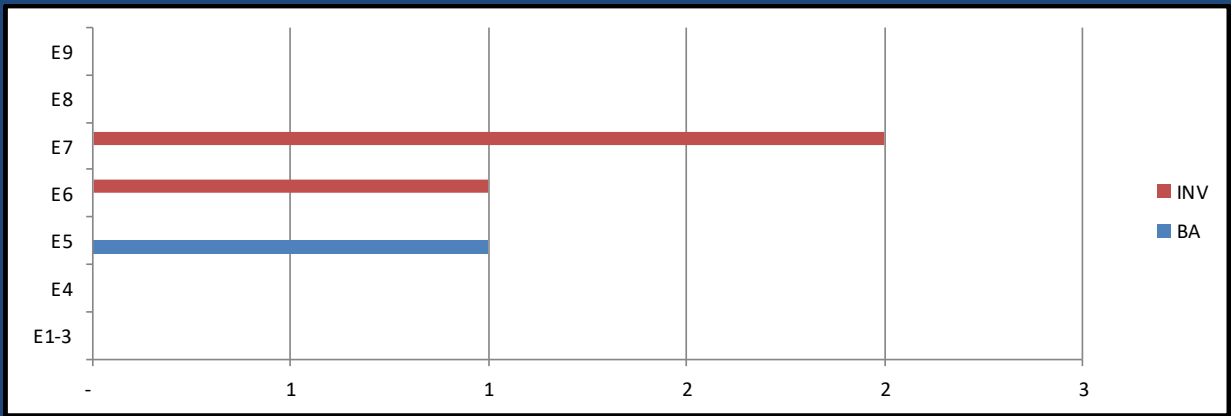
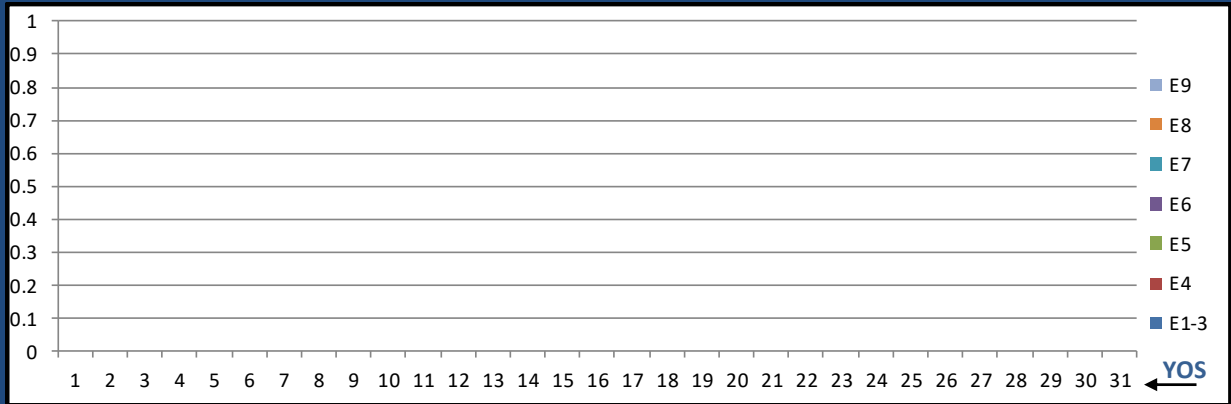
	E1-3	E4	E5	E6	E7	E8	E9	Total
%INV to BA	0%	0%	55%	280%	580%	0%	0%	207%
BA	-	1	20	15	5	-	-	41
Total Inventory	-	-	11	42	29	3	-	85
SJA Inventory	0%		151%		640%			

TAR L10A SURFACE FORCE IDC



	E1-3	E4	E5	E6	E7	E8	E9	Total
%INV to BA	0%	0%	50%	100%	120%	29%	0%	100%
BA	-	-	2	6	10	7	-	25
Total Inventory	-	-	1	6	12	2	4	25
SJA Inventory	#DIV/0!		88%		106%			

TAR L12A PREV MED TECH



	E1-3	E4	E5	E6	E7	E8	E9	Total
%INV to BA	0%	0%	0%	0%	0%	0%	0%	300%
BA	-	-	1	-	-	-	-	1
Total Inventory	-	-	-	1	2	-	-	3
SJA Inventory	#DIV/0!		100%		#DIV/0!			