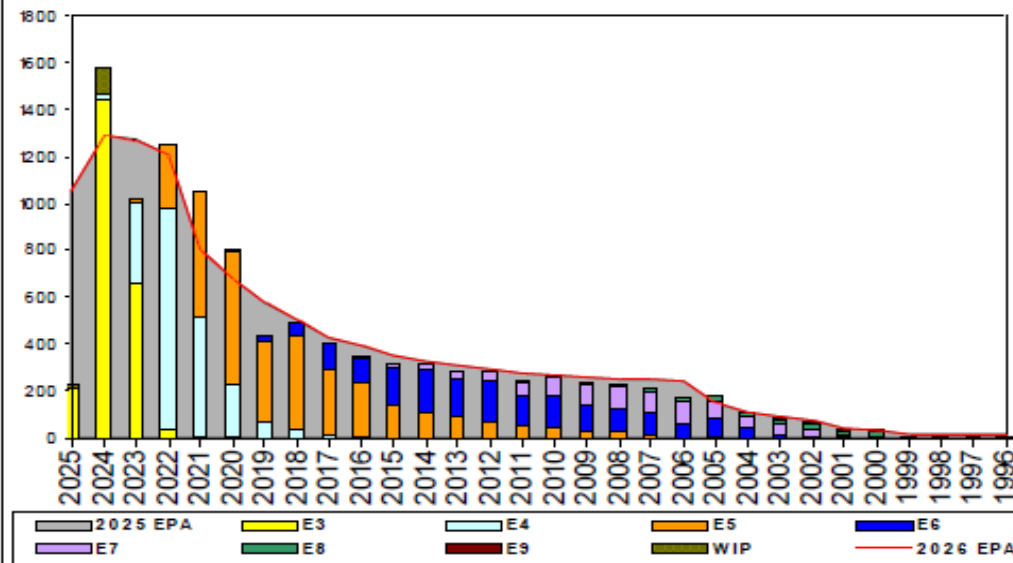
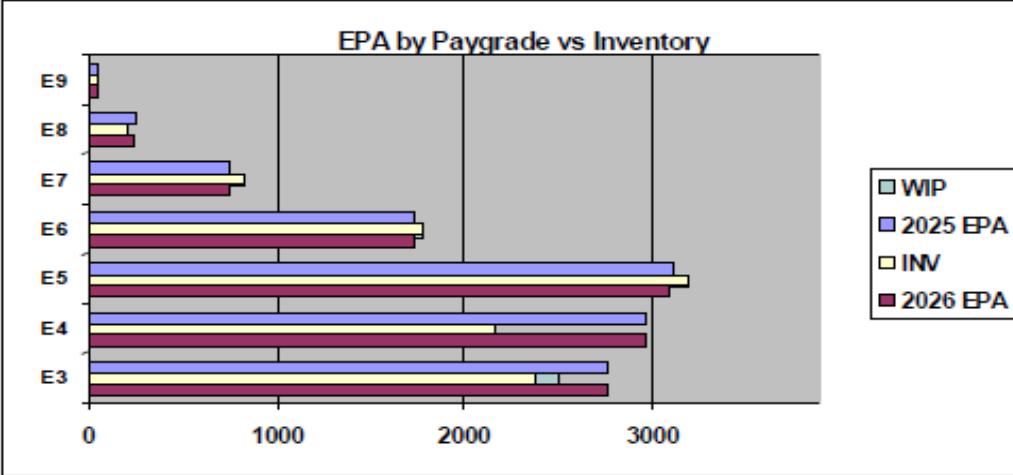


Master-At-Arms - B640



2025 EPA, E3, E4, E5, E6, E7, E8, E9, WIP, 2026 EPA



| | E1-3 | E4 | E5 | E6 | E7 | E8 | E9 | TOTAL |
|---------------------|------|------|---------------------|------|------|-----|-----|-------|
| % INV to FY25 EPA | 86% | 73% | 103% | 102% | 110% | 82% | 86% | 91% |
| EPA (FY25) | 2763 | 2963 | 3107 | 1732 | 748 | 244 | 51 | 11608 |
| INVENTORY | 2377 | 2163 | 3194 | 1772 | 822 | 201 | 44 | 10573 |
| EPA (FY26) | 2763 | 2960 | 3088 | 1736 | 748 | 241 | 50 | 11586 |
| % INV to FY26 EPA | 86% | 73% | 103% | 102% | 110% | 82% | 86% | 91% |
| INV +WIP / FY25 EPA | 91% | | | | | | | 92% |
| INVENTORY | 2509 | 132 | ← E-3 and Below WIP | | | | | 10705 |
| INV +WIP / FY26 EPA | 91% | | | | | | | 92% |

Sea Shore Flow

| TOUR | SEA | SHORE |
|------|-----|-------|
| 1ST | 36 | 36 |
| 2ND | 36 | 36 |
| 3RD | 36 | 36 |
| 4TH | 36 | 36 |
| 5TH | 36 | 36 |
| 6TH | 36 | 36 |
| 7TH | 36 | 36 |

FORCE STRUCTURE MANNING TO BA

| PG | SEA | INV | BA | SHORE | INV | BA | SEA+SHORE | TOTAL INV | TOTAL BA |
|-------|--------|------|------|--------|------|------|-----------|-----------|----------|
| E1-3 | 81.0% | 834 | 1029 | 100.9% | 1105 | 1095 | 91.3% | 1939 | 2124 |
| E4 | 86.7% | 913 | 1053 | 64.5% | 1134 | 1758 | 72.8% | 2047 | 2811 |
| E5 | 111.9% | 990 | 885 | 98.6% | 2010 | 2038 | 102.6% | 3000 | 2923 |
| E6 | 97.5% | 516 | 529 | 105.2% | 1164 | 1106 | 102.8% | 1680 | 1635 |
| E7 | 113.7% | 283 | 249 | 104.5% | 492 | 471 | 107.6% | 775 | 720 |
| E8 | 74.8% | 77 | 103 | 93.1% | 121 | 130 | 85.0% | 198 | 233 |
| E9 | 93.3% | 14 | 15 | 82.4% | 28 | 34 | 85.7% | 42 | 49 |
| Total | 93.9% | 3627 | 3863 | 91.3% | 6054 | 6632 | 92.2% | 9681 | 10495 |

ADV OPP. (Cycles 261/262/264)

| Pay Grade | E1-3 | E4 | E5 | E6 | E7 | E8 | E9 |
|-----------|------|-------|-------|--------|--------|--------|--------|
| All-Navy | TIR | TIR | 18.54 | 10.62% | 31.44% | 21.60% | 22.32% |
| MA | TIR | 52.1% | 23.3% | 12.2% | 24.4% | 27.3% | 33.3% |

Zone Info

| | ZONE A | ZONE B | ZONE C | ZONE D | ZONE E | ALL ZONES |
|-----------------|--------|--------|--------|--------|--------|-----------|
| FY25 Manning: | 96.0% | 85.0% | 91.0% | 88.0% | 71.0% | 91.0% |
| FYTD RENL Rate: | 61.3% | 58.4% | 85.2% | 98.2% | 35.0% | 65.6% |
| FY26 Manning: | 96.0% | 85.0% | 91.0% | 88.0% | 71.0% | 91.3% |

NOTES

Master at Arms Community Updates

- Convert-out and Early-out Opportunities: Considered on a case-by-case basis.
- For Special Warfare Communities (SO/SP/EDO/ND), contact SPECWAR ECM.
- Convert-in: Open to most Year Groups (YGs).
Accepting RC to AC, E-1 to E-5 under 10 years.
- PACT Sailors: Apply for conversion via MNCC.
- Reenlistment: Apply for CWAY quota via MNA.
- High Year Tenure (HYT): NAVADMIN 288/22 or case-by-case via 1306/7.
- HYT Plus Indefinite: NAVADMIN 277/23, contact your detailer.
- Fleet Reserve Requests: MILPERSMAN 1830-040, must align to SEAOS.
- Forced Conversion: MILPERSMAN 1440-011, must meet specific requirements.

Updated Selective Reenlistment Bonuses (SRBs) on MyNavyHR website.

Contact: For questions, e-mail MA_ECM.fct@navy.mil or call (901) 874-2975 or (901) 874-2080.