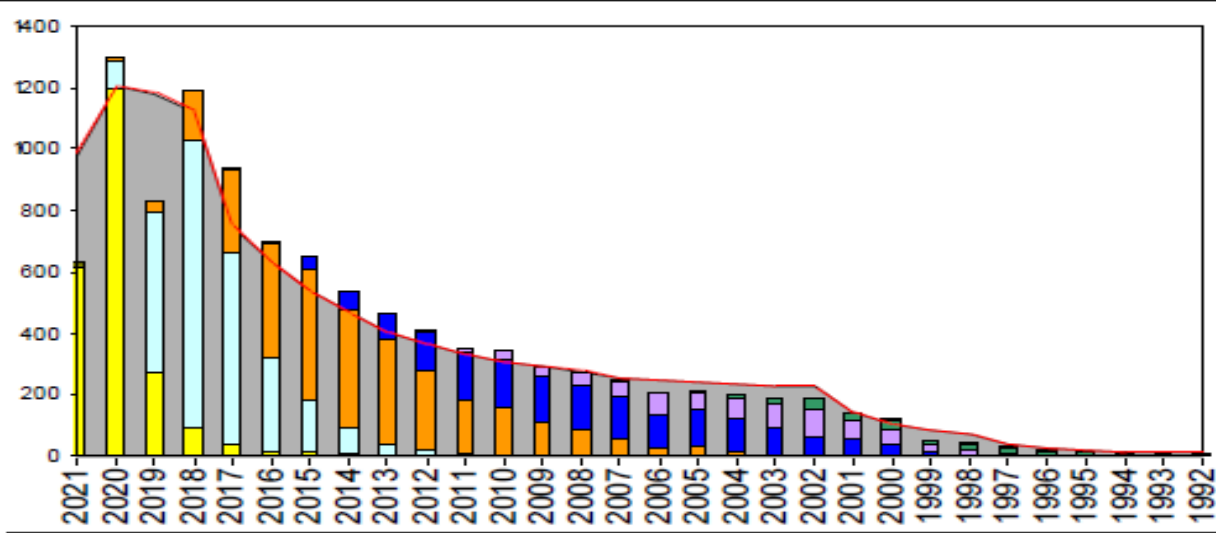
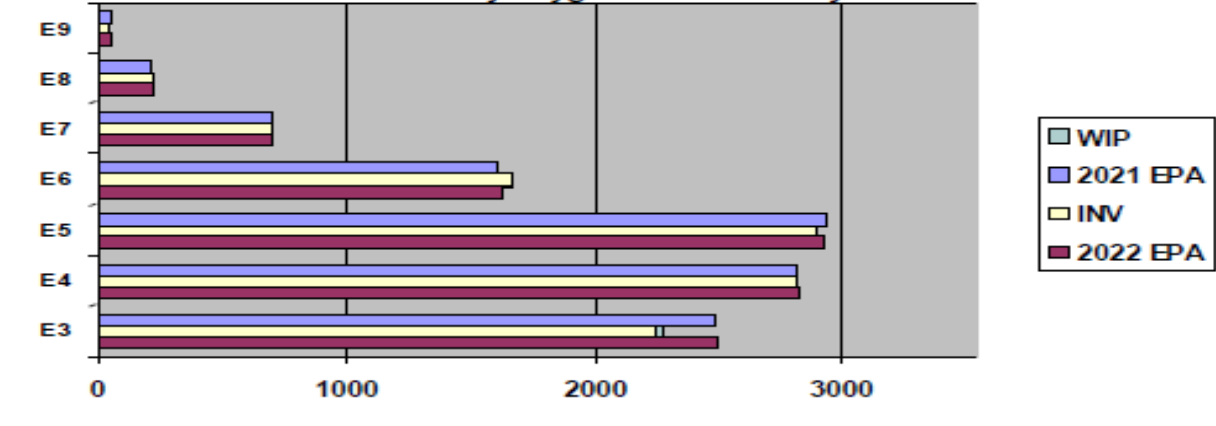


# Master-At-Arms - B640



2021 EPA, E3, E4, E5, E6, E7, E8, E9, WIP, 2022 EPA

### EPA by Paygrade vs Inventory



	E1-3	E4	E5	E6	E7	E8	E9	TOTAL
% INV to FY21 EPA	90%	100%	99%	104%	99%	101%	96%	98%
EPA (FY21)	2491	2812	2929	1604	704	220	50	10810
INVENTORY	2244	2811	2900	1665	699	222	48	10589
EPA (FY22)	2501	2826	2922	1626	703	221	50	10849
% INV to FY22 EPA	90%	99%	99%	102%	99%	100%	96%	98%
INV +WIP / FY21 EPA	91%							98%
INVENTORY	2269	25	← E-3 and Below WIP					10614
INV +WIP / FY22 EPA	91%							98%

### Sea Shore Flow

TOUR	SEA	SHORE
1ST	36	36
2ND	36	36
3RD	36	36
4TH	36	36
5TH	36	36
6TH	36	36
7TH	36	36

### FORCE STRUCTURE MANNING TO BA

PG	SEA	INV	BA	SHORE	INV	BA	SEA+SHORE	TOTAL INV	TOTAL BA
E1-3	79.7%	818	1026	73.2%	780	1065	76.4%	1598	2091
E4	101.6%	992	976	91.9%	1598	1738	95.4%	2590	2714
E5	108.6%	952	877	88.8%	1755	1976	94.9%	2707	2853
E6	104.3%	515	494	97.5%	1026	1052	99.7%	1541	1546
E7	96.7%	234	242	97.1%	431	444	96.9%	665	686
E8	72.2%	70	97	115.1%	137	119	95.8%	207	216
E9	106.7%	16	15	90.9%	30	33	95.8%	46	48
<b>Total</b>	<b>96.5%</b>	<b>3597</b>	<b>3727</b>	<b>89.6%</b>	<b>5757</b>	<b>6427</b>	<b>92.1%</b>	<b>9354</b>	<b>10154</b>

### ADV OPP. (Cycles 245/246/247)

All-Navy 10yr Avg	E1-3	E4	E5	E6	E7	E8	E9
TIR		34.9%	22.1%	13.9%	22.0%	11.6%	13.1%
All-Navy MA	TIR	28.3%	20.8%	8.1%	25.9%	13.6%	12.3%
	TIR	37.2%	10.8%	5.7%	20.1%	11.9%	9.6%

### Zone Info

	ZONE A	ZONE B	ZONE C	ZONE D	ZONE E	ALL ZONES
FY21 Manning:	98.0%	111.0%	105.0%	85.0%	73.0%	98.0%
FYTD RENL Rate:	59.4%	61.0%	81.2%	89.6%	31.4%	62.7%
FY22 Manning:	98.0%	110.0%	104.0%	85.0%	72.0%	97.6%

## NOTES

Guardians,  
 Current manning = 98% and will continue through the end of the FY!  
 Since we are on a high note, my tour is winding down and I am scheduled to be properly relieved by LCDR Antonio "Tank" Williams in the middle of this month. I am enroute to CFA Yokosuka Security Dept and look forward to being back out in the fleet. Thanks for all the work, watch standing, flexibility and patience!

SRBs are still available, but will not be around forever.  
 Convert In: 2008-2021  
 Convert Out: None  
 SRB = Zone A/0000 and Zone B and C/P06A  
 MA rating does not have EETP quotas available, there will be no early release.  
 RC2AC program has ceased through SEP2021.  
 Please contact MA\_ECM@navy.mil for any questions involving the MA rating.

Press on,  
 LCDR Ro Rosalez