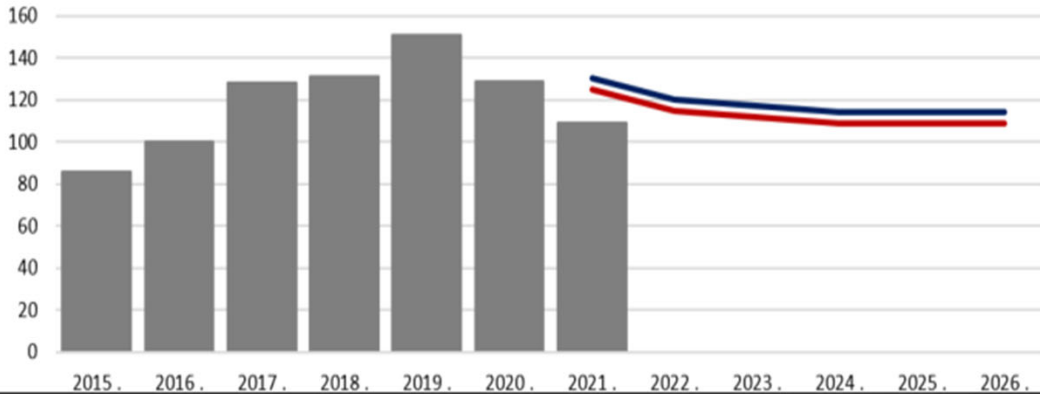
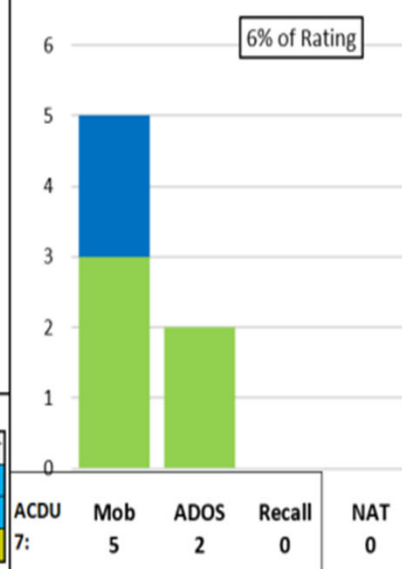


**A440 (AZ)**

**Historic Inventory to EPA**

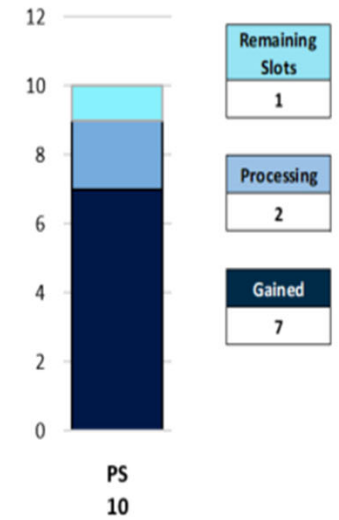


**SELRES on Active Duty**



**ADP**

**Accession**



Manning	Force Structure							Total FS	Total+NAT
	E3	E4	E5	E6	E7	E8	E9		
% INV To FY21 EPA	200%	53%	87%	110%	0%	75%	100%	87%	84%
EPA (FY21)	1	17	71	29	2	4	1	125	5
INVENTORY	2	9	62	32	0	3	1	109	0 (+0%)
EPA (FY23)	1	17	61	26	2	4	1	112	
% INV To FY23 EPA	200%	53%	102%	123%	0%	75%	100%	97%	
FY20 Eligible AC Losses	3	36	103	12	1	0	0	155	

**Notes**

Manned at 87% of FY-21 and 97% for FY-23 Enlisted Programmed Authorizations (EPA).  
 Quad chart does include frocked personnel. NATs in the training pipeline are represented.

**AC2SELRES**

- In Rating: Open (E4 to E6)
- Convert Out: Open (E4 to E6)
- Convert In: Closed

**RC2RC**

- Convert Out: Closed
- Convert In: Closed

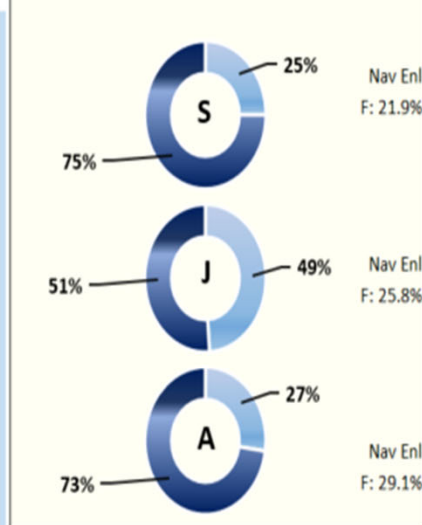
AC2SELRES Transition Procedures: MILPERSMAN 1306-1501.

Incentives: See NAVRESFOR LTR Ser N00/776, Dated 07 DEC 2020.

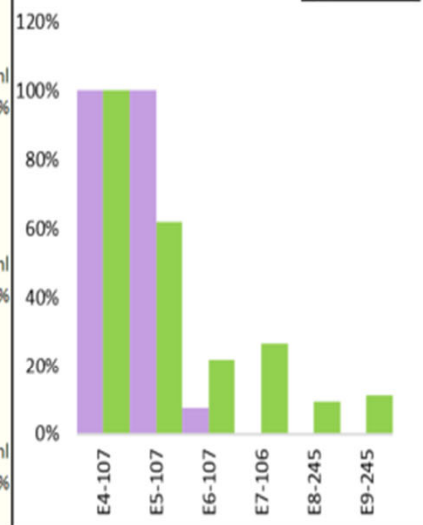
Enlisted Community Manager Technical Advisor: AWFCS(NAC/AW) William Simpkins

\*\*\*Updated Email: william.j.simpkins.mil@us.navy.mil

**Gender Breakout**



**Navy Advancement Opportunity**



**Legend**

Accession		EPA		Gender		Advancements	
PS	Goal	ALL EPA	CFY	Female	EMC		
Processing	In Inventory	FS EPA	None	Male	All NAV		
		None	FY 23				