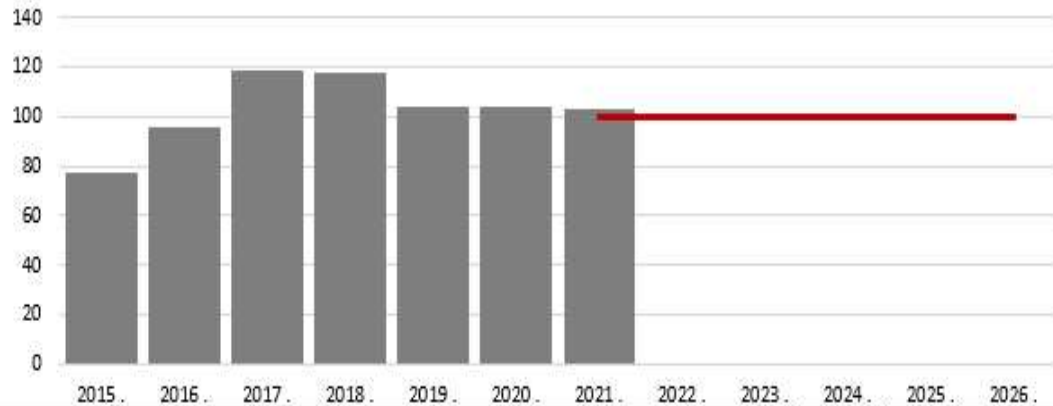
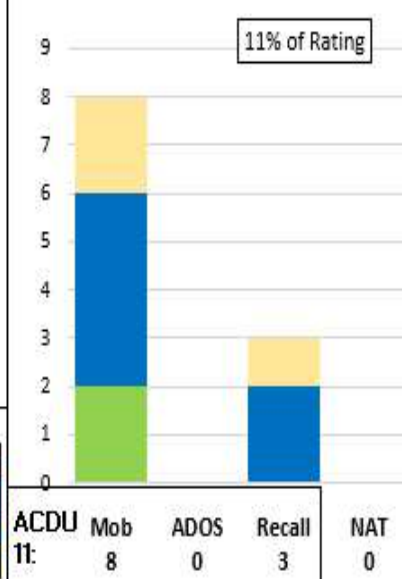


B200 (DC)

Historic Inventory to EPA

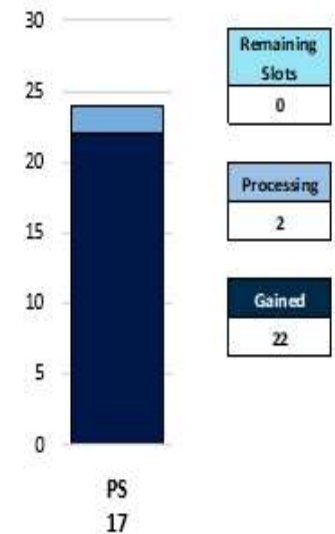


SELRES on Active Duty



ADP

Accession



Manning	Force Structure							Total FS	Total+NAT
	E3	E4	E5	E6	E7	E8	E9		
% INV To FY21 EPA	0%	0%	78%	126%	72%	100%	100%	103%	103%
EPA (FY21)	0	0	41	38	18	2	1	100	0
INVENTORY	0	7	32	48	13	2	1	103	0 (+0%)
EPA (FY23)	0	0	41	38	18	2	1	100	
% INV To FY23 EPA	0%	0%	78%	126%	72%	100%	100%	103%	
FY20 Eligible AC Losses	4	76	55	20	1	0	0	156	

Notes

Manned at 103% of FY21- and 103% for FY-23 Enlisted Programmed Authorizations (EPA).
 Quad Charts includes frocked personnel. NATs in the training pipeline are represented.

AC2RC:

- In Rate- Open E4-E6
- Convert Out Closed
- Convert In- Closed

RC2RC:

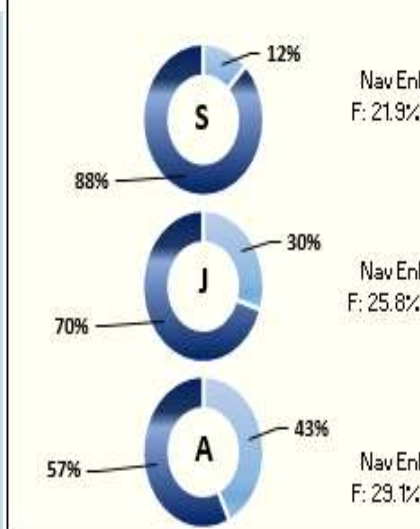
- Convert Out Closed
- Convert In Closed

Transition Procedures- MPM 1306-1501

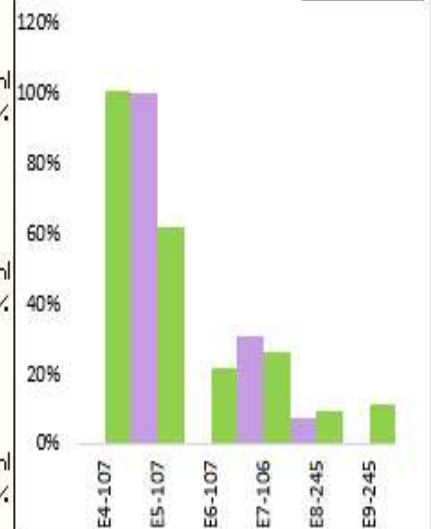
Incentives- See NAVRESFORCOM LTR Ser N000/776, Dated 07 Dec 2020

Enlisted Community Manager/TechAD-PSC(SW/AW)Angela Hutton, Angela.r.Hutton.mil@us.navy.mil

Gender Breakout



Navy Advancement Opportunity



Legend

Accession	EPA	Gender	Advancements
PS (Green)	ALL EPA (Red)	Female (Light Blue)	EMC (Purple)
Processing (Light Blue)	FS EPA (Dark Blue)	Male (Dark Blue)	All NAV (Green)
In Inventory (Dark Blue)	None (Light Blue)		
	CFY (Cyan)		
	FY 23 (Red)		