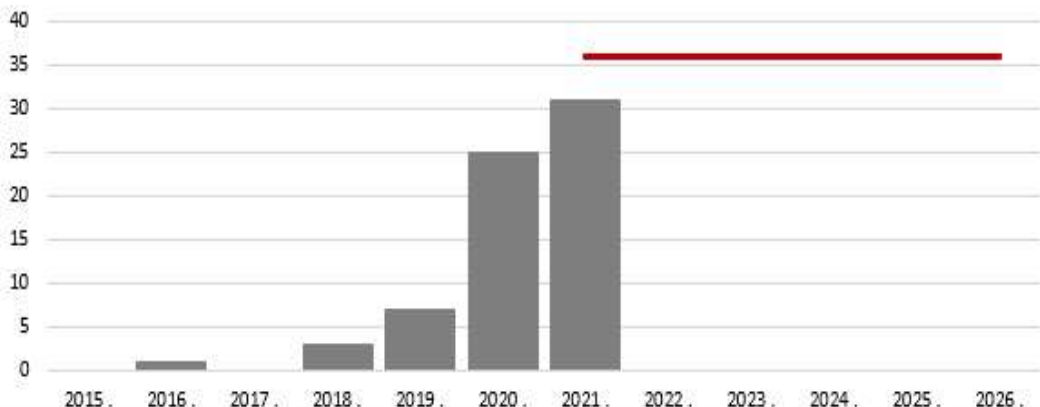
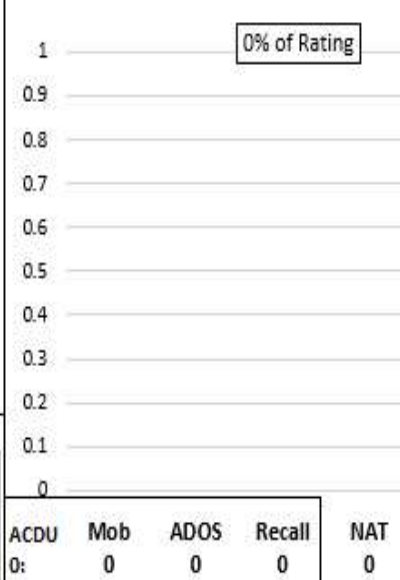


C130 (FT)

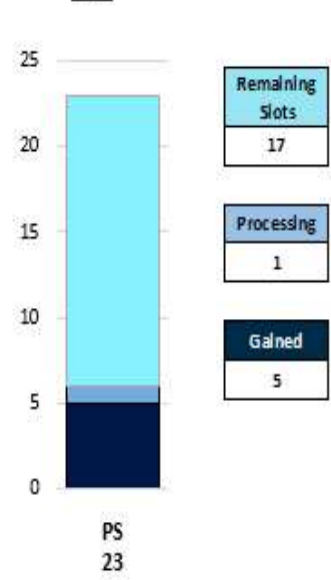
Historic Inventory to EPA



SELRES on Active Duty



ADP Accession



Manning	Force Structure							Total FS	Total+NAT
	E3	E4	E5	E6	E7	E8	E9		
% INV To FY21 EPA	0%	0%	112%	57%	50%	100%	0%	86%	86%
EPA (FY21)	0	0	17	14	4	1	0	36	0
INVENTORY	0	1	19	8	2	1	0	31	0 (+0%)
EPA (FY23)	0	0	17	14	4	1	0	36	
% INV To FY23 EPA	0%	0%	112%	57%	50%	100%	0%	86%	
FY20 Eligible AC Losses	0	14	46	10	1	0	0	71	

Notes

Manned at 86% of FY-21 and 86% of FY-23 Enlisted Programmed Authorizations (EPA). Quad chart does reflect frocked personnel. NATs in the training pipeline are represented.

AC2SELRES

In Rating – Open (E4 to E6)

Convert Out – Closed

Convert In – Closed

RC2RC

Convert Out – Closed

Convert In – Closed

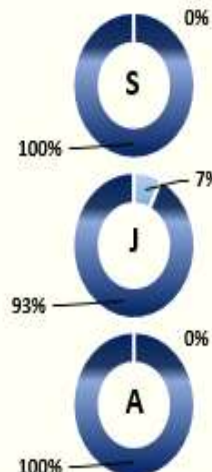
Transition Procedures – MILPERSMAN 1306-1501

Incentives See NAVRESFOR LTR Ser N000/776, Dated 07 DEC 2020

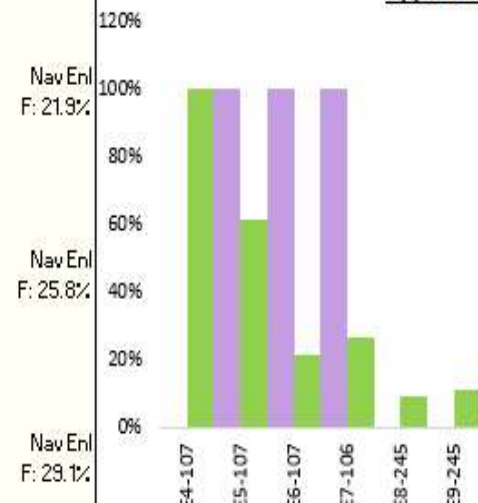
Enlisted Community Manager/TECHAD- PSC(AW) Alex Marquez, alexandromarquez.mil@us.navy.mil

Report Date: Aug 21 Data Sources: NMPBS(RHS), NSIPS, NRC CTO Report As of: Mid Aug 2021

Gender Breakout



Navy Advancement Opportunity



Legend

Accession	EPA	Gender	Advancements
PS	ALL EPA	Female	EMC
Processing	FS EPA	Male	All NAV
Goal	None		
In Inventory	CFY		
	None		
	FY 23		