

Historic Inventory to EPA

Manning	Force Structure							Total FS	Total+NAT
	E3	E4	E5	E6	E7	E8	E9		
% INV To FY21 EPA	0%	70%	116%	126%	91%	108%	100%	108%	106%
EPA (FY21)	0	150	243	252	69	13	4	731	15
INVENTORY	8	105	282	317	63	14	4	793	0 (+0%)
EPA (FY23)	0	150	243	252	69	13	4	731	
% INV To FY23 EPA	0%	70%	116%	126%	91%	108%	100%	108%	
FY20 Eligible AC Losses	10	142	136	20	1	0	0	309	

Notes

Manned at 108% of FY21 and 108% for FY-23 Enlisted Programmed Authorizations (EPA).
 Quad Charts includes frocked personnel. NATs in the training pipeline are represented.

AC2RC:

- In Rate- Open E4-E6
- Convert Out Closed
- Convert In- Closed

RC2RC:

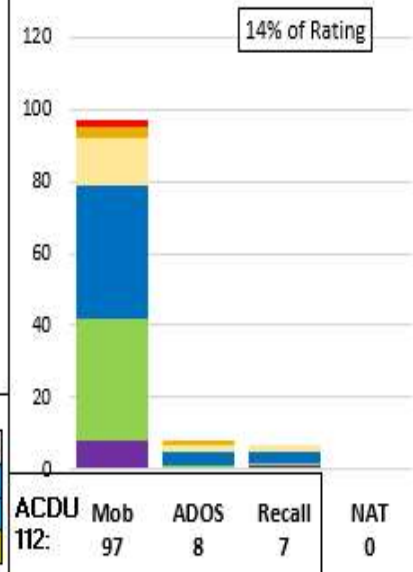
- Convert Out Closed
- Convert In Closed

Transition Procedures- MPM 1306-1501

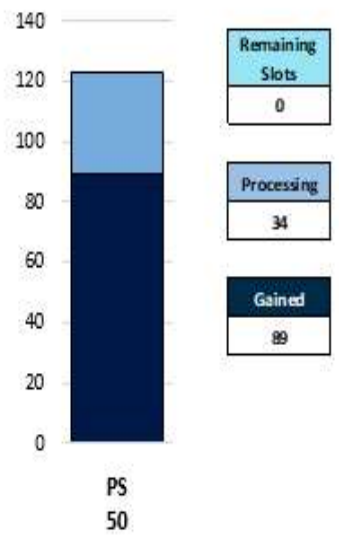
Incentives- See NAVRESFORCOM LTR Ser N000/776, Dated 07 Dec 2020

Enlisted Community Manager/TechAD-PSC(SW/AW)Angela Hutton, Angela.r.Hutton.mil@us.navy.mil

SELRES on Active Duty

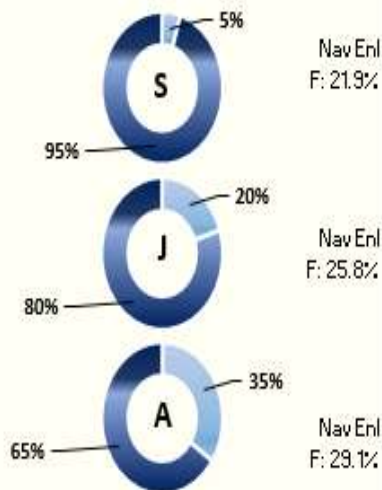


ADP

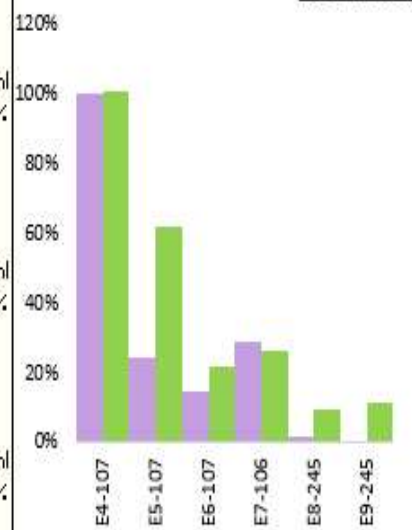


Accession

Gender Breakout



Navy Advancement Opportunity



Legend

Accession	EPA	Gender	Advancements
PS	ALL EPA	Female	EMC
Processing	FS EPA	Male	All NAV
In Inventory	None		
	CFY		
	FY 23		