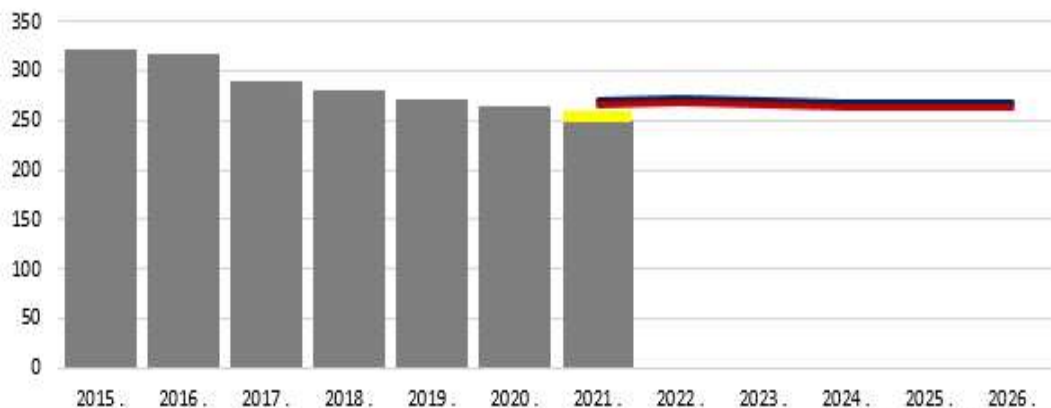
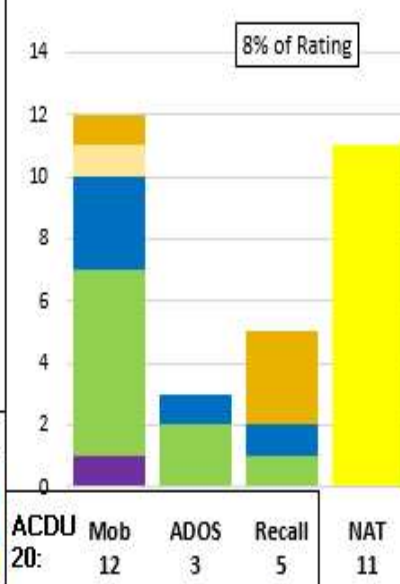


**C160 (MN)**

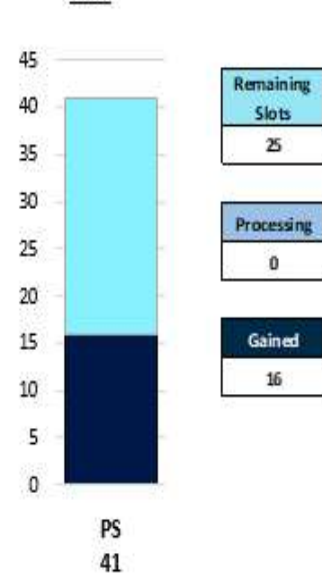
**Historic Inventory to EPA**



**SELRES on Active Duty**



**ADP Accession**



Manning	Force Structure							Total FS	Total+NAT
	E3	E4	E5	E6	E7	E8	E9		
% INV To FY21 EPA	0%	32%	105%	125%	83%	92%	100%	94%	92%
EPA (FY21)	0	65	104	56	24	13	4	266	4
INVENTORY	13	21	109	70	20	12	4	249	11 (+4%)
EPA (FY23)	0	65	103	56	25	13	4	266	
% INV To FY23 EPA	0%	32%	106%	125%	80%	92%	100%	94%	
FY20 Eligible AC Losses	0	32	18	8	0	0	0	58	

**Notes**

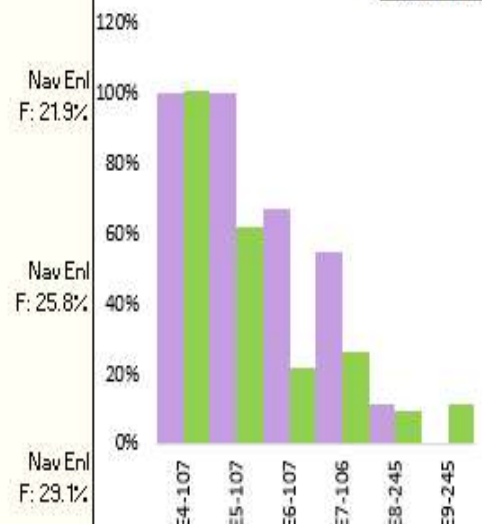
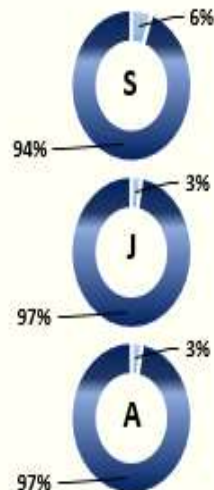
Manned at 94% of FY21 and 94% for FY-23 Enlisted Programmed Authorizations (EPA).  
 Quad Charts includes frocked personnel. NATs in the training pipeline are represented.

AC2RC:  
 -In Rate- Open E4-E6  
 -Convert Out Closed  
 -Convert In- Closed

RC2RC:  
 -Convert Out Closed  
 -Convert In Closed

Transition Procedures- MPM 1306-1501  
 Incentives- See NAVRESFORCOM LTR Ser N000/776, Dated 07 Dec 2020  
 Enlisted Community Manager/TechAD-PSC(SW/AW)Angela Hutton, Angela.r.Hutton.mil@us.navy.mil

**Gender Breakout**



**Legend**

Accession	EPA	Gender	Advancements
PS	ALL EPA	Female	EMC
Processing	FS EPA	Male	All NAV
Goal	None		
In Inventory	CFY		
	FY 23		