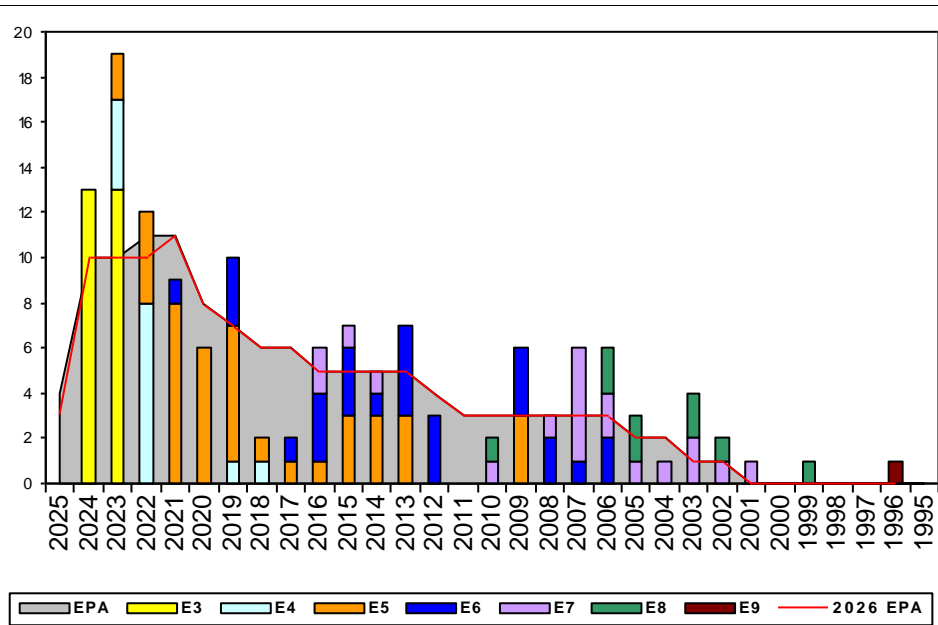


Electrician's Mate, TAR - K050

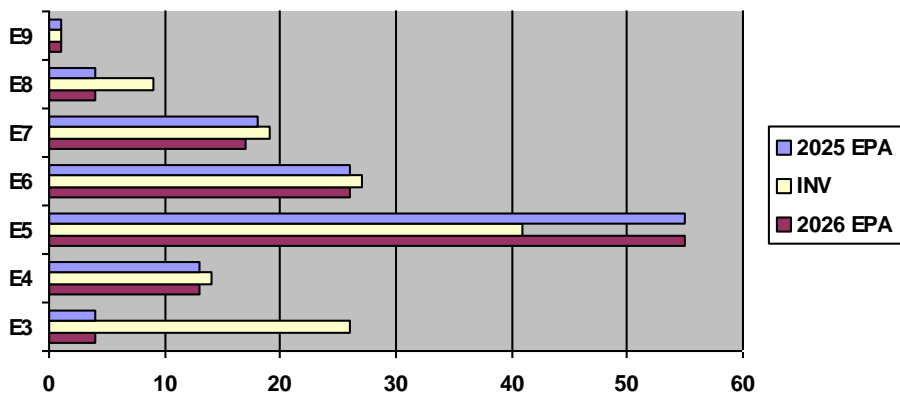


Sea Shore Rotation			FS MANNING			ADV OPP.	
TOUR	SEA	SHORE	PG	SEA	SHORE	EMTAR	All-Navy
E1-3	48	42	E1-3	433.33%	0.00%	TIR	TIR
E4	48	42	E4	100.00%	0.00%	40.91%	TIR
E5	48	42	E5	67.57%	100.00%	100.00%	29.30%
E6	48	42	E6	125.00%	109.09%	18.75%	13.22%
E7	48	36	E7	75.00%	92.86%	66.67%	22.94%
E8	48	36	E8	100.00%	300.00%	25.00%	12.83%
E9	42	36	E9	0.00%	100.00%	0.00%	29.87%

Zone Information

	ZONE A	ZONE B	ZONE C	ZONE D	ZONE E	ALL ZONES
FY25 Manning	128%	62%	89%	144%	167%	113%
FYTD RE Rate:	0.00%	0.00%	0.00%	0.00%	100.00%	33.33%
FY26 Manning	133%	62%	89%	144%	167%	114%

EPA by Paygrade vs Inventory



NOTES

The EM TAR Rating is healthy at 113% for FY25 Enlisted Program Authorization

Convert in opportunities for:
E5 YG 2016-2018

All other rating conversions will be considered on a case-by-case basis.

EM TAR ECM
YNC(SW/EXW) Jennifer Stires
jennifer.l.stires.mil@us.navy.mil

	E1-3	E4	E5	E6	E7	E8	E9	TOTAL
% INV to FY25 EPA	650%	108%	75%	104%	106%	225%	100%	113%
EPA (FY25)	4	13	55	26	18	4	1	121
INVENTORY	26	14	41	27	19	9	1	137
EPA (FY26)	4	13	55	26	17	4	1	120
% INV to FY26 EPA	650%	108%	75%	104%	106%	225%	100%	114%

