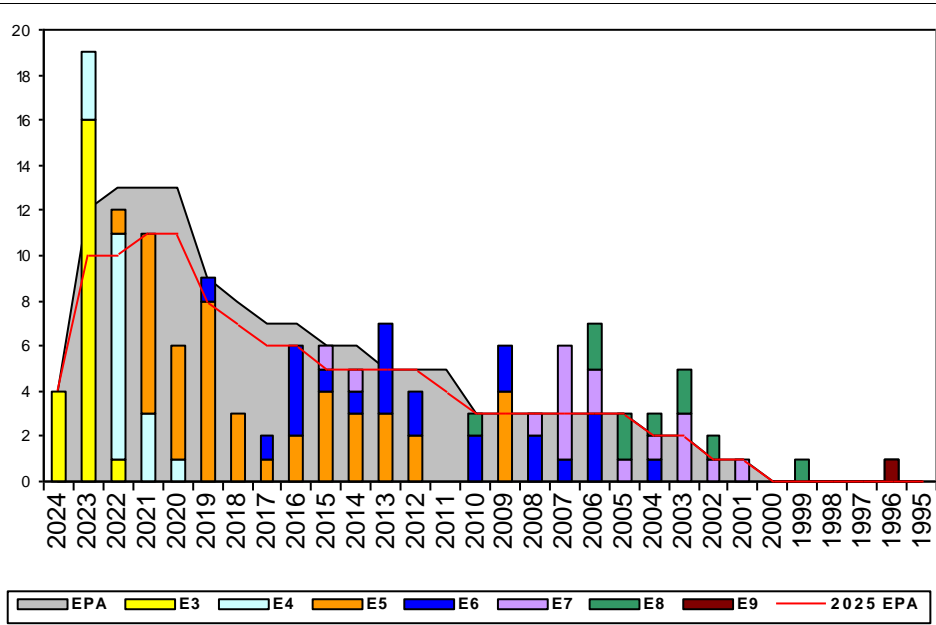


Electrician's Mate, TAR - K050

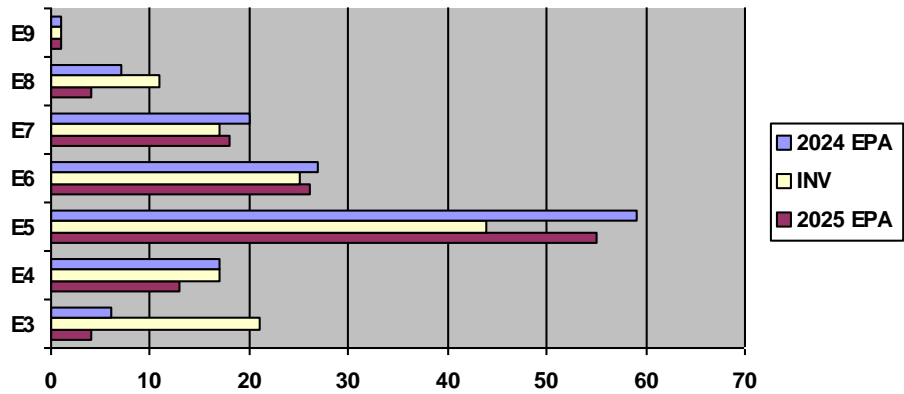


Sea Shore Rotation			FS MANNING			ADV OPP.	
TOUR	SEA	SHORE	PG	SEA	SHORE	EMTAR	All-Navy
E1-3	48	42	E1-3	333.33%	0.00%	TIR	TIR
E4	48	42	E4	114.29%	0.00%	40.91%	58.8%
E5	48	42	E5	68.42%	82.35%	75.00%	47.0%
E6	48	42	E6	116.67%	100.00%	5.56%	15.0%
E7	48	36	E7	40.00%	100.00%	50.00%	24.3%
E8	48	36	E8	100.00%	200.00%	21.43%	5.3%
E9	42	36	E9	0.00%	100.00%	0.00%	20.0%

Zone Information

	ZONE A	ZONE B	ZONE C	ZONE D	ZONE E	ALL ZONES
FY24 Manning	95%	68%	71%	156%	217%	99%
FYTD RE Rate:	100.00%	75.00%	50.00%	100.00%	33.33%	71.43%
FY25 Manning	113%	79%	79%	156%	217%	112%

EPA by Paygrade vs Inventory



	E1-3	E4	E5	E6	E7	E8	E9	TOTAL
% INV to FY24 EPA	350%	100%	75%	93%	85%	157%	100%	99%
EPA (FY24)	6	17	59	27	20	7	1	137
INVENTORY	21	17	44	25	17	11	1	136
EPA (FY25)	4	13	55	26	18	4	1	121
% INV to FY25 EPA	525%	131%	80%	96%	94%	275%	100%	112%

NOTES

Rating Manning at 112% for FY-25

** CONVERT IN OPPORTUNITIES: E5 YGs 2021-2011 **

** NO CONVERT OUT OPPORTUNITIES **

** RC2TAR QUOTAS: E5 YGs 2021-2011 **

*** ZONE A EM TAR SAILORS HAVE SRB OPPORTUNITY. CONTACT YOUR CCC TO VERIFY IF YOU QUALIFY AND TO SUBMIT. ***

EM TAR ECM
 YNCS(AW/EXW) Keith Henley
 keith.m.henley.mil@us.navy.mil

