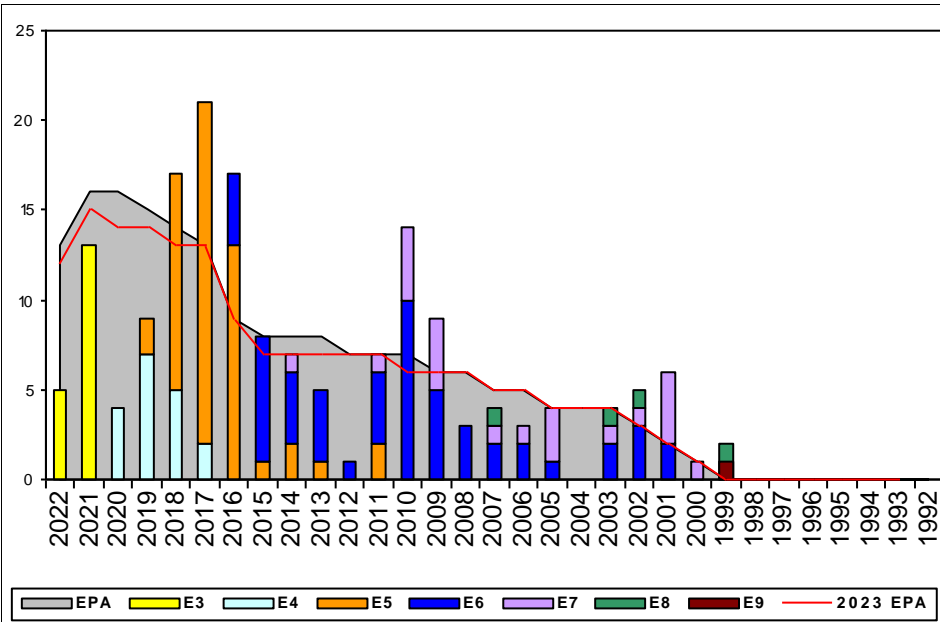


Electronics Technician, TAR - K070

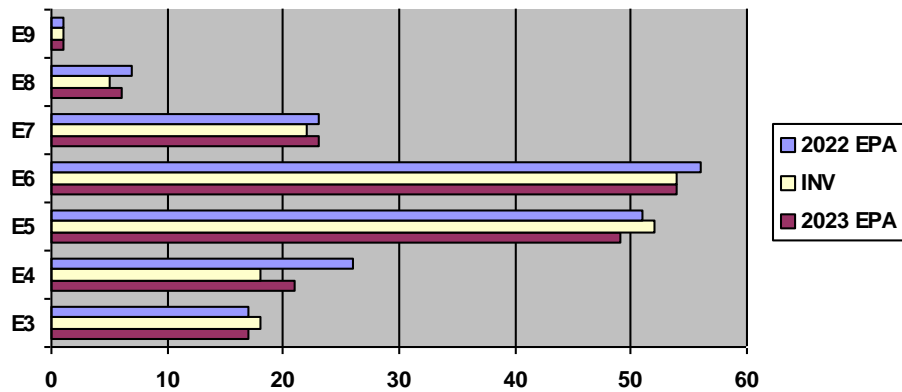


Sea Shore Rotation			MANNING			ADV OPP.	
TOUR	SEA	SHORE	PG	SEA	SHORE	ETTAR	All-Navy
E1-3	48	42	E1-3	0.00%	0.00%	TIR	TIR
E4	48	42	E4	82.35%	40.00%	0.00%	45.0%
E5	48	42	E5	103.23%	105.88%	40.00%	27.6%
E6	48	42	E6	68.97%	145.45%	23.81%	7.0%
E7	48	36	E7	84.62%	100.00%	29.17%	16.1%
E8	48	36	E8	33.33%	150.00%	16.67%	6.6%
E9	42	36	E9	0.00%	100.00%	0.00%	26.1%

Zone Information

	ZONE A	ZONE B	ZONE C	ZONE D	ZONE E	ALL ZONES
FY22 Manning	86%	97%	119%	71%	183%	94%
FYTD RE Rate:	85.71%	66.67%	100.00%	100.00%	33.33%	75.00%
FY23 Manning	93%	107%	123%	71%	183%	99%

EPA by Paygrade vs Inventory



NOTES

Rating Manning at 94% of FY-22 and 99% of FY-23 EPA

** CONVERT IN OPPORTUNITIES: E4s YGs 2020 & 2019 **

** NO CONVERT OUT OPPORTUNITIES **

** RC2TAR QUOTAS: E4s YGs 2020 & 2019 **

Cycle 249 E8/E9 selections not reflecting in new paygrade at this time.

****IF A SAILOR WHO DESIRES TO RE-ENLIST AND DOES NOT HAVE A REENLISTMENT QUOTA, PLEASE CONTACT THE ENLISTED COMMUNITY MANAGER TO DISCUSS OPTIONS.****

ET TAR ECM
LSC(SW/AW) SHAWAND HARP
shawand.t.harp.mil@us.navy.mil

	E1-3	E4	E5	E6	E7	E8	E9	TOTAL
% INV to FY22 EPA	106%	69%	102%	96%	96%	71%	100%	94%
EPA (FY22)	17	26	51	56	23	7	1	181
INVENTORY	18	18	52	54	22	5	1	170
EPA (FY23)	17	21	49	54	23	6	1	171
% INV to FY23 EPA	106%	86%	106%	100%	96%	83%	100%	99%

