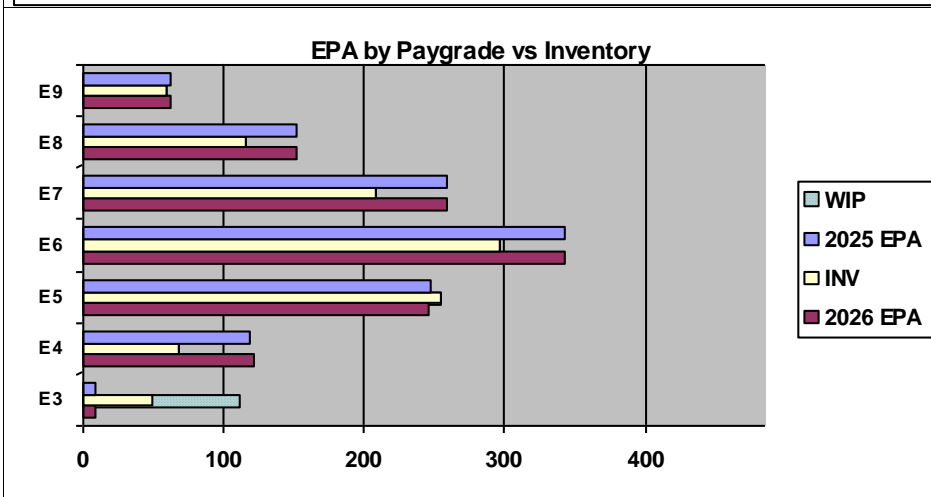
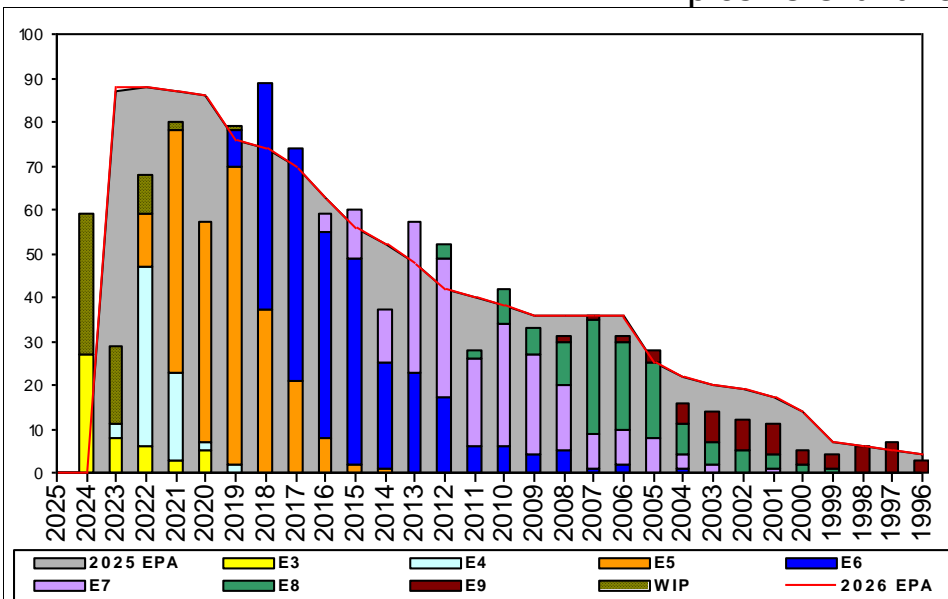


Explosive Ordnance Disposal - E200



	E1-3	E4	E5	E6	E7	E8	E9	TOTAL
% INV to FY25 EPA	613%	57%	103%	86%	81%	76%	97%	88%
EPA (FY25)	8	119	247	343	259	152	62	1190
INVENTORY	49	68	254	296	209	115	60	1051
EPA (FY26)	8	121	246	343	259	152	62	1191
% INV to FY26 EPA	613%	57%	103%	86%	81%	76%	97%	88%
INV + WIP / FY25 EPA	###	###	###	###	###	###	###	94%
INVENTORY	111	62	← E-3 and Below WIP					1113
INV + WIP / FY26 EPA	###	###	###	###	###	###	###	93%

Sea Shore Flow			FORCE STRUCTURE MANNING TO BA									
TOUR	SEA	SHORE	PG	SEA	INV	BA	SHORE	INV	BA	SEA + SHORE	TOTAL INV	TOTAL BA
1ST	60	36	E1-3									
2ND	60	36	E4	28.1%	32	114	#Div/0!	1		28.9%	33	114
3RD	48	36	E5	118.8%	228	192	0.0%		48	95.0%	228	240
4TH	48	36	E6	103.5%	179	173	66.5%	103	155	86.0%	282	328
5TH	36	36	E7	82.5%	127	154	74.5%	76	102	79.3%	203	256
6TH	36	36	E8	76.9%	70	91	76.8%	43	56	76.9%	113	147
7TH	36	36	E9	97.4%	38	39	100.0%	21	21	98.3%	59	60
Total				88.3%	674	763	63.9%	244	382	80.2%	918	1145

ADV OPP. (Cycles 261/262/264)

Pay Grade	E1-3	E4	E5	E6	E7	E8	E9
All-Navy	TIR	TIR	18.54	10.62%	31.44%	21.60%	22.32%
EOD	TIR	100.0%	63.0%	100.0%	100.0%	69.6%	28.4%

Zone Info

	ZONE A	ZONE B	ZONE C	ZONE D	ZONE E	ALL ZONES
FY25 Manning:	81.0%	101.0%	98.0%	90.0%	64.0%	88.0%
FYTD RENL Rate:	83.3%	94.1%	70.0%	88.9%	28.6%	77.6%
FY26 Manning:	81.0%	101.0%	98.0%	90.0%	64.0%	88.2%

NOTES

Convert-in Opportunity:

- We are accepting conversions from YG 19-24.
- We are considering waivers up to E6 and limited ASVAB waivers.
- Must meet EOD program requirements.
READ MILPERSMAN 1220-200 IN FULL
- DO NOT DE-SELECT YOURSELF! Don't consider yourself ineligible before talking with the EOD ECM to discuss your situation.

IF YOU INTEND TO APPLY FOR EOD IT IS IMPERATIVE YOU SUBMIT YOUR CONVERSION PACKAGE BEFORE YOU ARE UNDER ORDERS

EOD TECHNICIANS:

- *NEW EOD Senior Enlisted RB Eligibility Rules* (as of July 2024)
- *NEW ENLISTED EOD NAVAL POST GRADUATE SCHOOL NAVADMIN*
 - NPS Master's Degree opportunities available to E6 and above.
 - See NAVADMIN 199/24 for details. Contact ECM to apply.