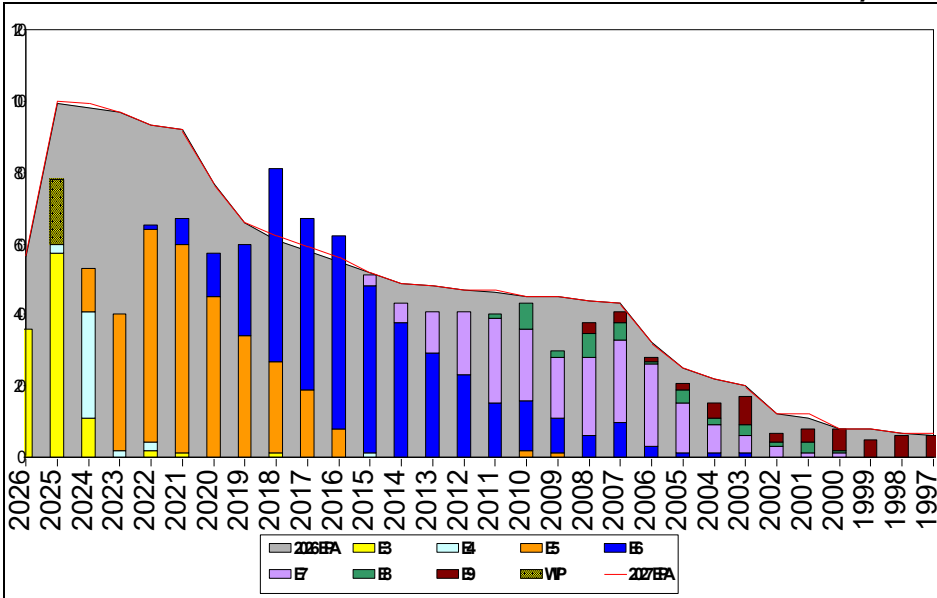


Navy Diver - E100

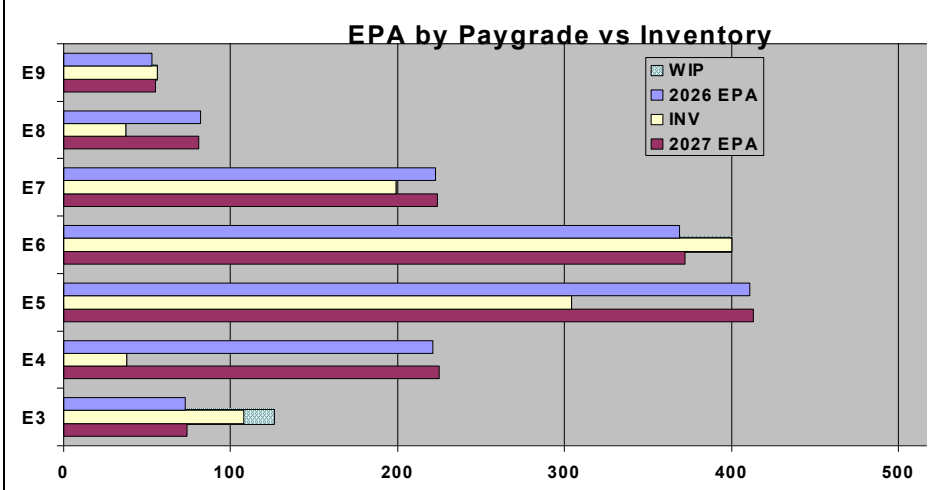


Tour	SEA	SHORE
1ST	36	36
2ND	36	36
3RD	36	36
4TH	36	36
5TH	36	36
6TH	36	36
7TH	36	36

FORCE STRUCTURE MANNING TO BA												
Tour	SEA	SHORE	PG	SEA	INV	BA	SHORE	INV	BA	SEA + SHORE	TOTAL INV	TOTAL BA
1ST	36	36	E1-3	#Div/0!	8		#Div/0!	9		#Div/0!	17	
2ND	36	36	E4	20.7%	24	116	11.8%	13	110	16.4%	37	226
3RD	36	36	E5	68.3%	157	230	83.4%	131	157	74.4%	288	387
4TH	36	36	E6	117.5%	201	171	96.0%	170	177	106.6%	371	348
5TH	36	36	E7	94.1%	95	101	92.7%	101	109	93.3%	196	210
6TH	36	36	E8	41.5%	22	53	43.8%	14	32	42.4%	36	85
7TH	36	36	E9	88.9%	16	18	117.6%	40	34	107.7%	56	52
Total				75.9%	523	689	77.2%	478	619	76.5%	1001	1308

TIS to PG Years	Pay Grade	E1-E3	E4	E5	E6	E7	E8	E9
ALL Navy	TIS		2.2	4.0	8.7	13.8	17.8	21.7
	ND	TIS	1.4	3.0	7.5	14.4	17.1	21.6
TIG to PG Years	ALL Navy	TIG	1.3	1.8	4.7	5.7	5.0	4.6
	ND	TIG	1.0	1.5	4.1	6.8	3.8	4.0

Zone Info	ZONE A	ZONE B	ZONE C	ZONE D	ZONE E	ALL ZONES
FY26 Manning:	67.0%	103.0%	89.0%	83.0%	70.0%	80.0%
FYTD RENL Rate:	100.0%	86.7%	89.7%	91.7%	33.3%	83.3%



	E1-3	E4	E5	E6	E7	E8	E9	TOTAL
% INV to FY26 EPA	148%	17%	74%	108%	89%	45%	106%	80%
EPA (FY26)	73	221	411	369	223	82	53	1432
INVENTORY	108	38	304	400	199	37	56	1142
EPA (FY27)	74	225	413	372	224	81	55	1444
% INV to FY27 EPA	146%	17%	74%	108%	89%	46%	102%	79%
INV + WIP / FY26 EPA	173%							81%
INVENTORY	126	18						1160
INV + WIP / FY26 EPA	170%							80%

NOTES

Convert-in opportunity for E3, E4, E5 Sailors in Year Groups 2019-2025.

PACT SAILORS ARE STRONGLY ENCOURAGED TO APPLY!!
 All PACT Sailors are eligible to for conversion. The Navy Diver ECM invites any SVM to call the Navy Diver Enlisted Community Manager (ECM) directly if you have any questions. 901-874-3116

NAVY DIVERS

ND ECM will strongly consider approval for all commissioning programs

MDV Candidates: Contact the ECM and Detailer to convey your intentions/desires

HOOYAH!!