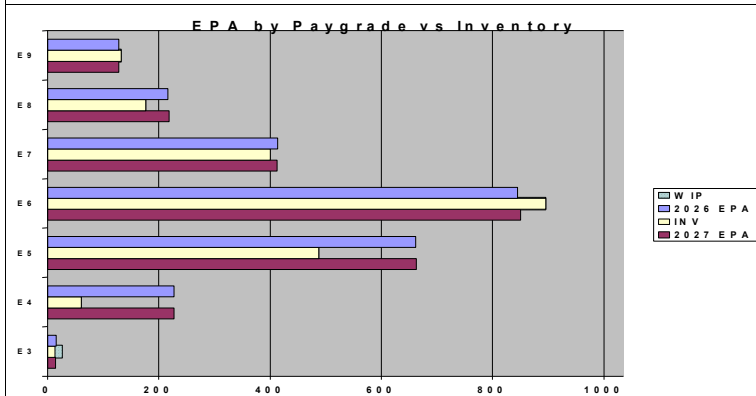
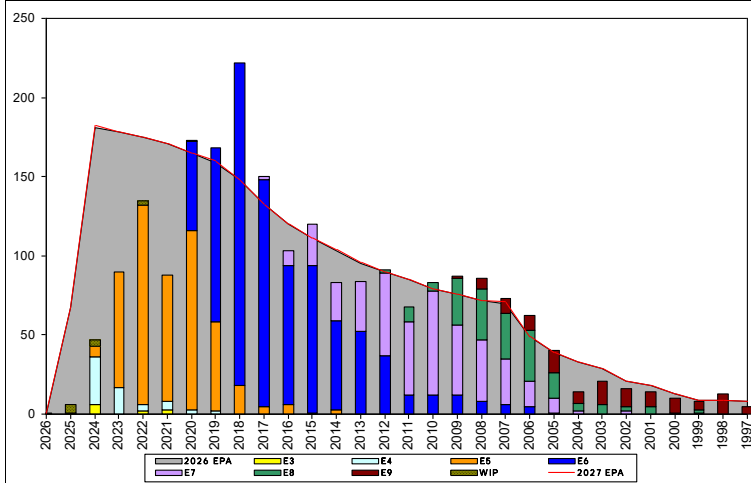


Special Warfare Operator - E300



	E1-3	E4	E5	E6	E7	E8	E9	TOTAL
% INV to FY26 EPA	87%	27%	74%	106%	97%	82%	103%	86%
EPA (FY26)	15	227	662	845	414	216	128	2507
INVENTORY	13	61	488	895	400	177	132	2166
EPA (FY27)	14	227	663	850	412	218	128	2512
% INV to FY27 EPA	93%	27%	74%	105%	97%	81%	103%	86%
INV +WIP / FY26 EPA	173%							87%
INVENTORY	26	13	← E-3 and Below WIP					2179
INV +WIP / FY26 EPA	186%							87%

Sea Shore Flow

TOUR	SEA	SHORE
1ST	60	36
2ND	60	36
3RD	48	36
4TH	48	36
5TH	36	36
6TH	36	36
7TH	36	36

FORCE STRUCTURE MANNING TO BA

PG	SEA	INV	BA	SHORE	INV	BA	SEA + SHORE	TOTAL INV	TOTAL BA
E1-3	#Div/0!	4					#Div/0!	4	
E4	17.4%	35	201	0.0%		1	17.3%	35	202
E5	71.9%	459	638	100.0%	13	13	72.5%	472	651
E6	113.9%	736	646	75.7%	134	177	105.7%	870	823
E7	98.5%	332	337	95.5%	64	67	98.0%	396	404
E8	86.8%	131	151	85.7%	42	49	86.5%	173	200
E9	105.0%	84	80	102.1%	48	47	103.9%	132	127
Total	86.8%	1781	2053	85.0%	301	354	86.5%	2082	2407

TIS to PG Years

Pay Grade	E1-E3	E4	E5	E6	E7	E8	E9
ALL Navy	TIS	2.2	4.0	8.7	13.8	17.8	21.7
SO	TIS	2.4	3.3	6.8	12.9	16.9	20.6
ALL Navy	TIG	1.3	1.8	4.7	5.7	5.0	4.6
SO	TIG	2.1	1.3	3.5	6.5	4.9	4.4

Zone Info

	ZONE A	ZONE B	ZONE C	ZONE D	ZONE E	ALL ZONES
FY26 Manning:	60.0%	112.0%	87.0%	102.0%	74.0%	86.0%
FYTD RENL Rate:	94.3%	75.4%	73.7%	100.0%	37.4%	76.5%

NOTES

No early separation or convert out opportunity for SO (O26A) rated sailors.

Conditional releases for SO's are considered for the applicable programs at last submission opportunity prior to service members SEAOS.

Must be Pre-LPO and not serving in the milestone billet

SO rating conversion requests to attend SO "A" school, are reviewed quarterly.

For conversion guidance see NSW applicants page at: <https://www.mynavyhr.navy.mil/Career-Management/Community-Management/Enlisted/Special-Warfare/NSW-Applicants/>