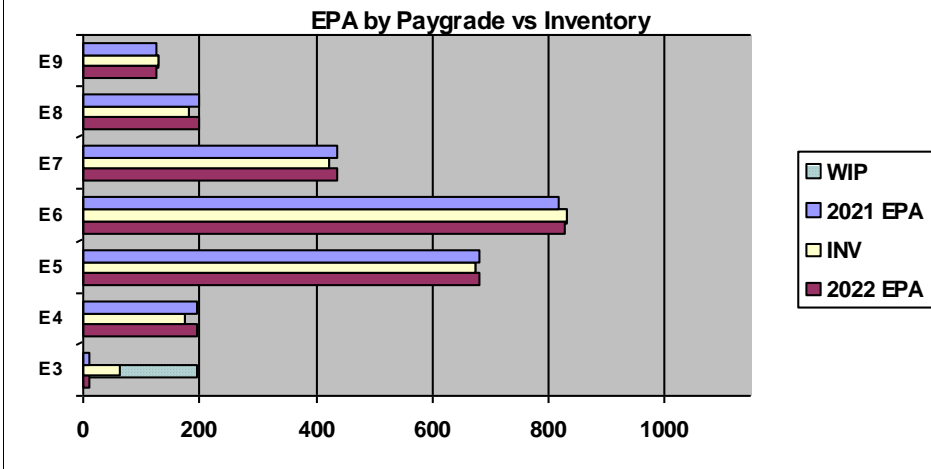
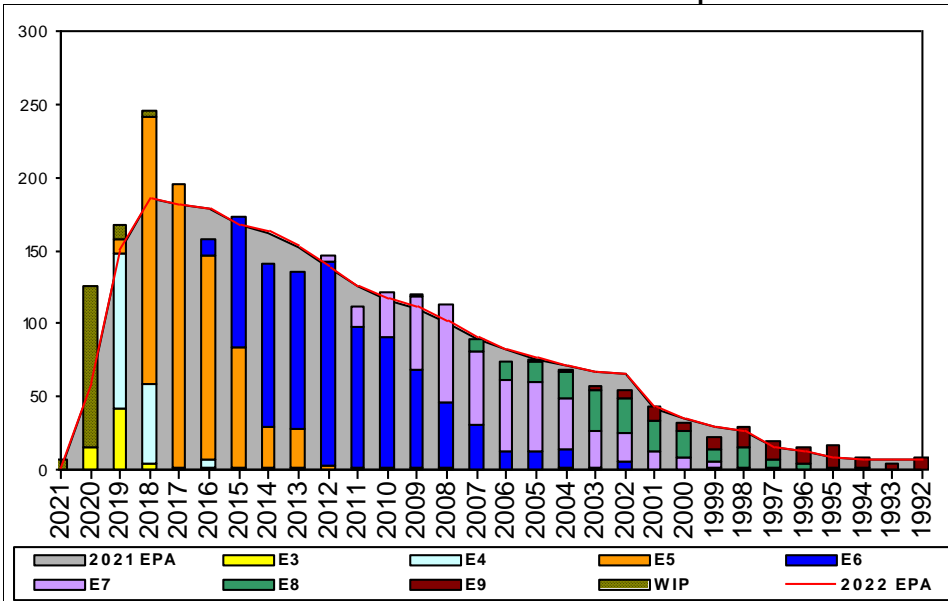


Special Warfare Operator - E300



| | E1-3 | E4 | E5 | E6 | E7 | E8 | E9 | TOTAL |
|----------------------|------|-----|---------------------|------|-----|-----|------|-------|
| % INV to FY21 EPA | 525% | 89% | 99% | 102% | 97% | 92% | 103% | 100% |
| EPA (FY21) | 12 | 194 | 680 | 817 | 437 | 200 | 124 | 2464 |
| INVENTORY | 63 | 173 | 674 | 831 | 422 | 183 | 128 | 2474 |
| EPA (FY22) | 12 | 196 | 682 | 826 | 437 | 200 | 124 | 2477 |
| % INV to FY22 EPA | 525% | 88% | 99% | 101% | 97% | 92% | 103% | 100% |
| INV + WIP / FY21 EPA | ### | ### | ### | ### | ### | ### | ### | 106% |
| INVENTORY | 194 | 131 | ← E-3 and Below WIP | | | | | 2605 |
| INV + WIP / FY22 EPA | ### | ### | ### | ### | ### | ### | ### | 105% |

| Sea Shore Flow | | | FORCE STRUCTURE MANNING TO BA | | | | | | | | | |
|----------------|-----|-------|-------------------------------|--------|------|------|--------|-----|-----|---------------------|-----------|----------|
| TOUR | SEA | SHORE | PG | SEA | INV | BA | SHORE | INV | BA | SEA + SHORE #Div/0! | TOTAL INV | TOTAL BA |
| 1ST | 60 | 36 | E1-3 | 0.0% | 4 | | 0.0% | | | | 4 | |
| 2ND | 60 | 36 | E4 | 81.0% | 136 | 168 | 0.0% | | 1 | 80.5% | 136 | 169 |
| 3RD | 48 | 36 | E5 | 98.2% | 644 | 656 | 57.1% | 8 | 14 | 97.3% | 652 | 670 |
| 4TH | 48 | 36 | E6 | 98.0% | 630 | 643 | 90.4% | 142 | 157 | 96.5% | 772 | 800 |
| 5TH | 36 | 36 | E7 | 96.2% | 325 | 338 | 86.8% | 79 | 91 | 94.2% | 404 | 429 |
| 6TH | 36 | 36 | E8 | 92.5% | 123 | 133 | 85.7% | 54 | 63 | 90.3% | 177 | 196 |
| 7TH | 36 | 36 | E9 | 104.2% | 74 | 71 | 102.0% | 52 | 51 | 103.3% | 126 | 122 |
| Total | | | | 96.4% | 1936 | 2009 | 88.9% | 335 | 377 | 95.2% | 2271 | 2386 |

| ADV OPP. (Cycles 245/246/247) | | | | | | | |
|-------------------------------|------|--------|-------|-------|-------|-------|-------|
| All-Navy 10yr Avg | E1-3 | E4 | E5 | E6 | E7 | E8 | E9 |
| | TIR | 34.9% | 22.1% | 13.9% | 22.0% | 11.6% | 13.1% |
| All-Navy | TIR | 28.3% | 20.8% | 8.1% | 25.9% | 13.6% | 12.3% |
| SO | TIR | 100.0% | 74.4% | 16.4% | 43.4% | 20.4% | 21.3% |

| Zone Info | ZONE A | ZONE B | ZONE C | ZONE D | ZONE E | ALL ZONES |
|-----------------|--------|--------|--------|--------|--------|-----------|
| FY21 Manning: | 108.0% | 94.0% | 102.0% | 92.0% | 109.0% | 100.0% |
| FYTD RENL Rate: | 98.8% | 85.4% | 86.2% | 97.9% | 56.6% | 88.3% |
| FY22 Manning: | 108.0% | 93.0% | 102.0% | 91.0% | 108.0% | 99.9% |

NOTES

Current SO rating manned at 100%.
 No early separation or convert out opportunity for SO (O26A) rated sailors.
 Fleet Convert in opportunity is extremely competitive and is available for E5 and below in year group 2016 and 2019. All other YG please see MILPERSMAN 1220-400 for SB specific rating information.
 Rating criteria and physical requirements are set forth in MILPERSMAN 1220-300 and 1220-410.
 Physical Screening Tests (PST) must be coordinated through and signed by the NSW Assessment Team and completion documented IAW MILPERSMAN 1220-300 PST schedules for Fleet conversion candidates can be viewed at www.sealswcc.com.
 SO rating conversion requests, to attend SO "A" school, are reviewed quarterly. Window for FY21 Q4 Combined with FY 22 Q1 Dates: TBD (expect late Oct early Nov submission window)
 Sep. No late submissions. Receipt notification will be sent NLT 1 WK of receipt of request. Allow 45 days from deadline before inquiring about results.
 See www.sealswcc.com and "From Fleet to Naval Special Warfare" <https://www.sealswcc.com/navy-seal-podcast.html> for more information
 Data Source: NMPBS(Inv)/NRMS(RE Rate)/N12(EPA/SSF)/BUPERS3(Adv Op) **As of Date: 02-Jul-21**