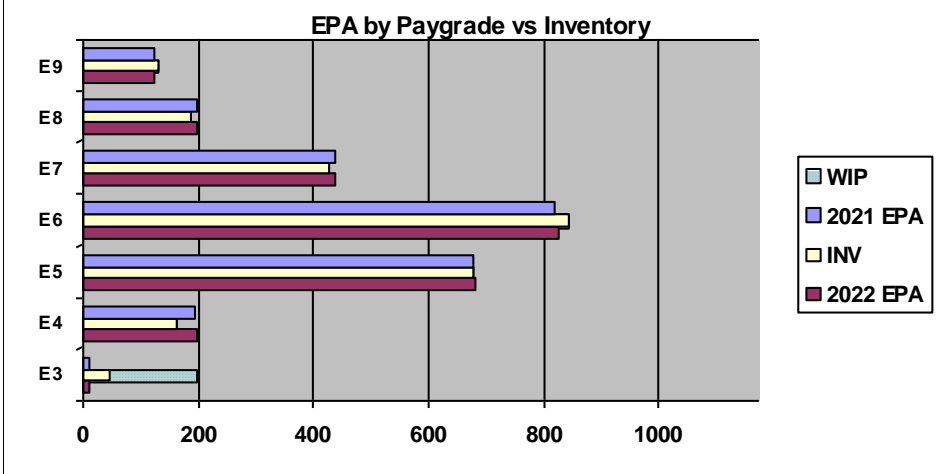
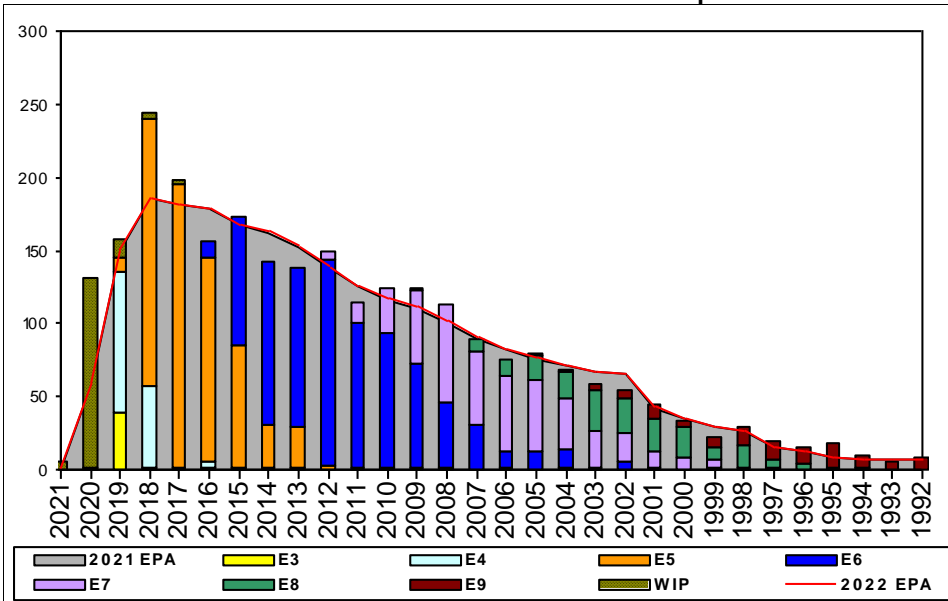


Special Warfare Operator - E300



	E1-3	E4	E5	E6	E7	E8	E9	TOTAL
% INV to FY21 EPA	383%	83%	100%	103%	97%	94%	106%	100%
EPA (FY21)	12	194	678	818	438	199	125	2464
INVENTORY	46	161	679	843	426	188	132	2475
EPA (FY22)	12	196	680	827	438	199	125	2477
% INV to FY22 EPA	383%	82%	100%	102%	97%	94%	106%	100%
INV + WIP / FY21 EPA	###	###	###	###	###	###	###	107%
INVENTORY	199	153	← E-3 and Below WIP					2628
INV + WIP / FY22 EPA	###	###	###	###	###	###	###	106%

Sea Shore Flow			FORCE STRUCTURE MANNING TO BA									
TOUR	SEA	SHORE	PG	SEA	INV	BA	SHORE	INV	BA	SEA + SHORE #Div/0!	TOTAL INV	TOTAL BA
1ST	60	36	E1-3	0.0%	1		0.0%				1	
2ND	60	36	E4	76.2%	128	168	0.0%		1	75.7%	128	169
3RD	48	36	E5	99.1%	650	656	42.9%	6	14	97.9%	656	670
4TH	48	36	E6	102.6%	660	643	86.0%	135	157	99.4%	795	800
5TH	36	36	E7	100.3%	339	338	85.7%	78	91	97.2%	417	429
6TH	36	36	E8	97.0%	129	133	82.8%	53	64	92.4%	182	197
7TH	36	36	E9	108.5%	77	71	102.0%	52	51	105.7%	129	122
Total				98.8%	1984	2009	85.7%	324	378	96.7%	2308	2387

ADV OPP. (Cycles 245/246/247)							
All-Navy 10yr Avg	E1-3	E4	E5	E6	E7	E8	E9
	TIR	34.9%	22.1%	13.9%	22.0%	11.6%	13.1%
All-Navy	TIR	28.3%	20.8%	8.1%	25.9%	13.6%	12.3%
SO	TIR	100.0%	74.4%	16.4%	43.4%	20.4%	21.3%

Zone Info	ZONE A	ZONE B	ZONE C	ZONE D	ZONE E	ALL ZONES
FY21 Manning:	104.0%	95.0%	108.0%	92.0%	108.0%	100.0%
FYTD RENL Rate:	98.6%	85.6%	86.2%	97.8%	57.4%	88.3%
FY22 Manning:	104.0%	94.0%	107.0%	91.0%	108.0%	99.9%

NOTES

Current SO rating manned at 100%.
 No early separation or convert out opportunity for SO (O26A) rated sailors.
 Fleet Convert in opportunity is extremely competitive and is available for E5 and below in year group 2016 and 2019. All other YG please see MILPERSMAN 1220-400 for SB specific rating information.
 Rating criteria and physical requirements are set forth in MILPERSMAN 1220-300 and 1220-410.
 Physical Screening Tests (PST) must be coordinated through and signed by the NSW Assessment Team and completion documented IAW MILPERSMAN 1220-300 PST schedules for Fleet conversion candidates can be viewed at www.sealswcc.com.
 SO rating conversion requests, to attend SO "A" school, are reviewed quarterly. Window for FY21 Q3 24 May-11 Jun, Q4 23 Aug-10 Sep. No late submissions. Receipt notification will be sent NLT 1 WK of receipt of request. Allow 45 days from deadline before inquiring about results.
 See www.sealswcc.com and "From Fleet to Naval Special Warfare" <https://www.sealswcc.com/navy-seal-podcast.html> for more information